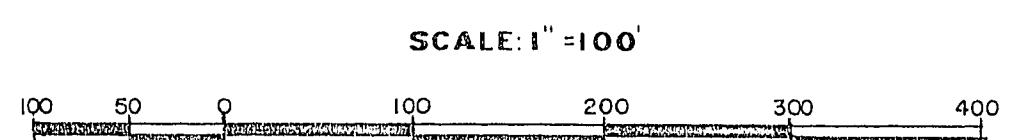
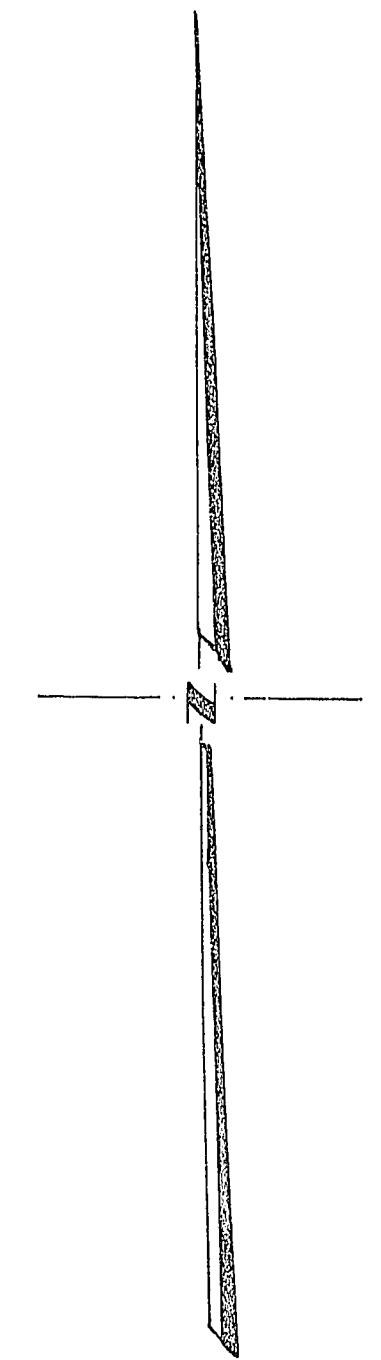
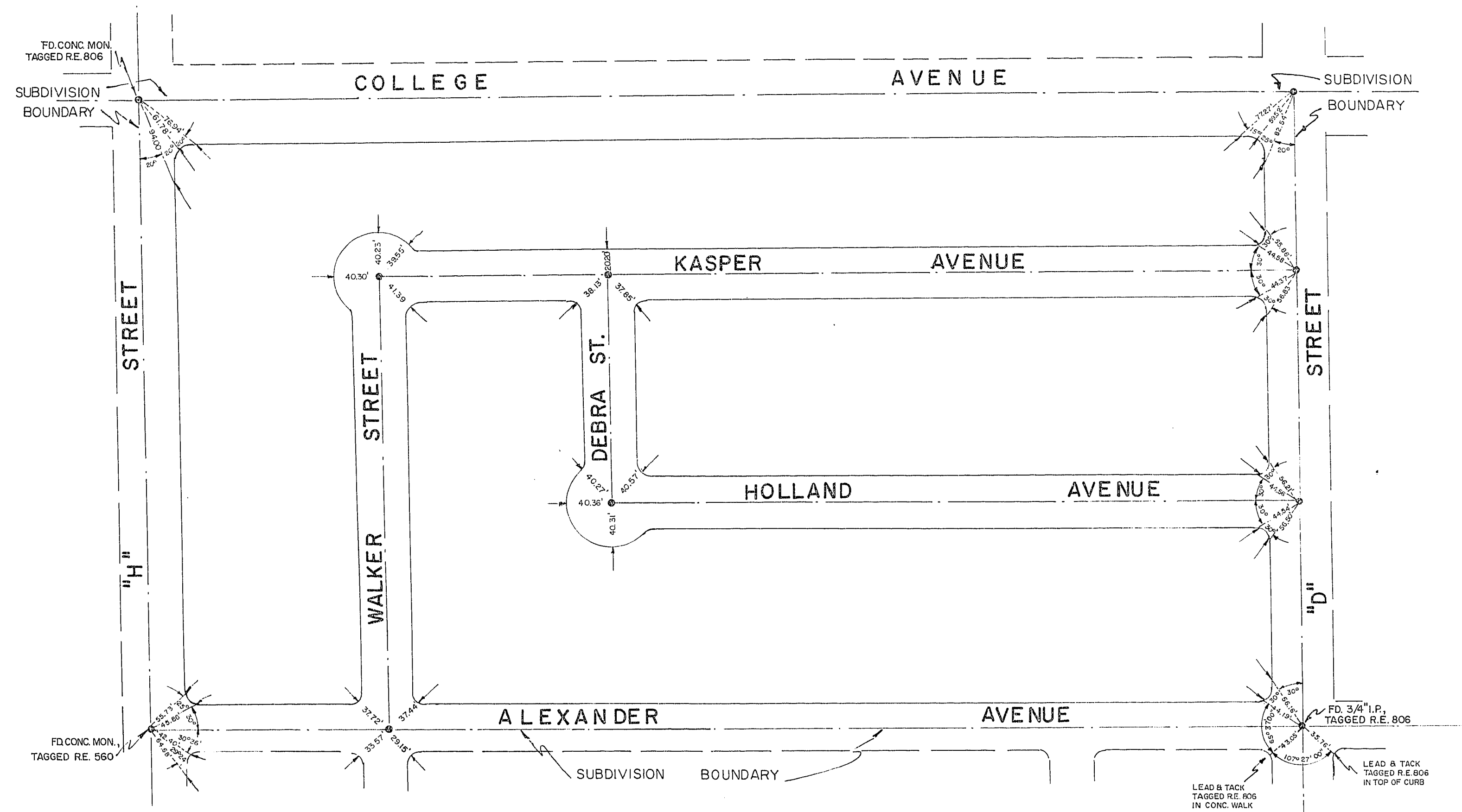


17-6-113

SUNSET MANOR TR. N° 3

POR. NW 1/4 SW 1/4 SEC. 22, T. 20 S., R. 61 E., M. DB. 8 M.
CITY OF LAS VEGAS CLARK COUNTY, NEVADA



- NOTES —
- SET CONCRETE MONUMENT TAGGED R.E. 560
 - OPPOSITE TIES ARE IN LINE, MARKED BY "X" CUT IN CURB.
 - ALL TIES ARE MARKED BY "X" CUT IN TOP OF CURB, EXCEPT AS OTHERWISE SHOWN.

MONUMENT TIES
SUNSET MANOR TR. N° 3

DATE: OCTOBER 14, 19 60
DESIGNED BY: R.P.
DRAWN BY: R.P.
CHECKED BY: B.J.V.
SCALE: 1" = 100'
TYSON ENGINEERING COMPANY
CONSULTING ENGINEERS
1209 SOUTH "A" STREET LAS VEGAS, NEV.
SHEET 1
OF 1 SHEETS

058-3020-7