

ESTIMATED QUANTITIES

	ONSITE	OFFSITE
8" VCP	2768 LF	115 LF
10" VCP	0 LF	271 LF
MANHOLES	18 EA	2 EA

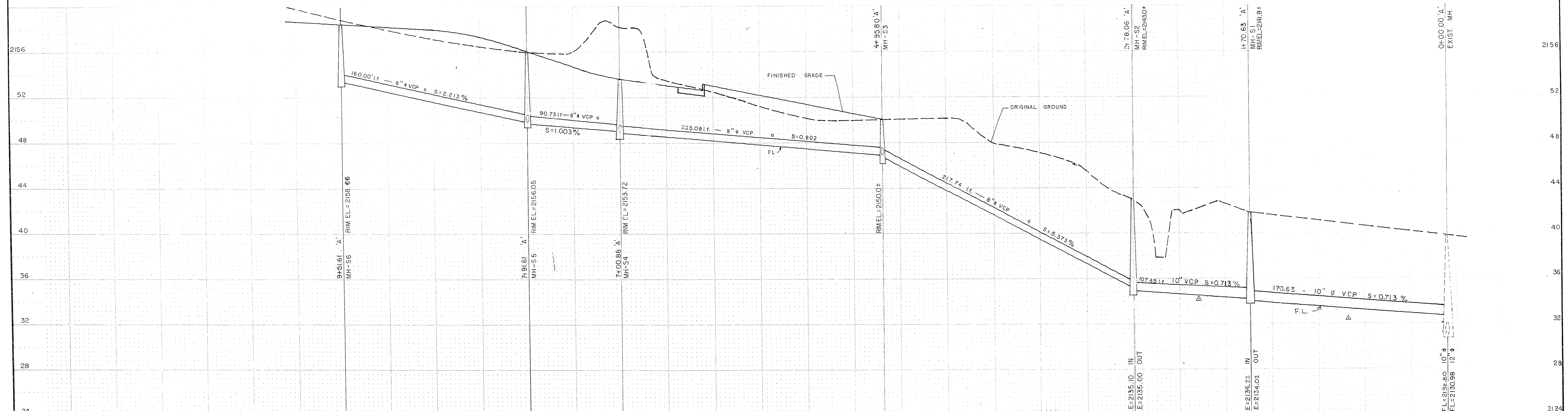
SCALE
HORIZ. 1" = 40', VERT. 1" = 4'

APPROVALS

LAS VEGAS CITY ENGINEER DATE

J. D. ...
LAS VEGAS FIELD ENGINEER DATE

SANITATION SUPT. DATE



NO.	DESCRIPTION	DATE
1	RAISE LINE - EXIST. MH-S2 7/4	

SUNDOWN, UNIT 1
SANITARY SEWER

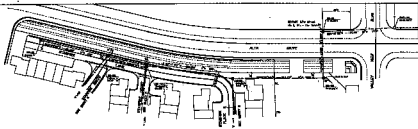
Portion of the NW 1/4 of the SE 1/4 of Section 31, T20S, R61E, M.D.B. & M.

APPROVED: *Dwight Wagoner*

LAS VEGAS CONSULTING ENGINEERS / PLANNERS
SPARKS, NEVADA · SEATTLE, WASHINGTON · LAS VEGAS, NEVADA

NEVADA

JOB NO. 271013
DESIGNED RDS
DRAWN DRC
COMP. _____
CHECKED RDS/RDB
DATE MAY 1972
SHEET NO. 10
OF 15 SHEETS

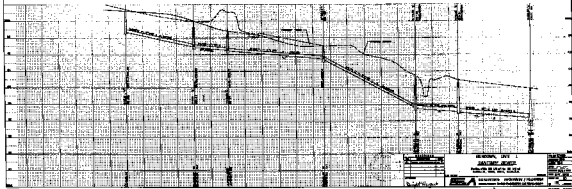


ESTIMATED QUANTITIES

	BRIDGE	WINGS
CONCRETE	15,000	10,000
STEEL	1,000	500
WOOD	100	50
PAVING	10,000	5,000
LANDSCAPING	100	50

SCALE
 1" = 100'

DESIGNED BY
 J. C. W. J. J.
 CHECKED BY
 J. C. W. J. J.
 DATE
 10/1/50



NO.	DATE

BRIDGE, DIV. 1
 BRIDGE NO. 1
 FEDERAL ROADWAY PROJECT
 FEDERAL ROADWAY PROJECT
 FEDERAL ROADWAY PROJECT

DATE	