

ESTIMATED QUANTITIES

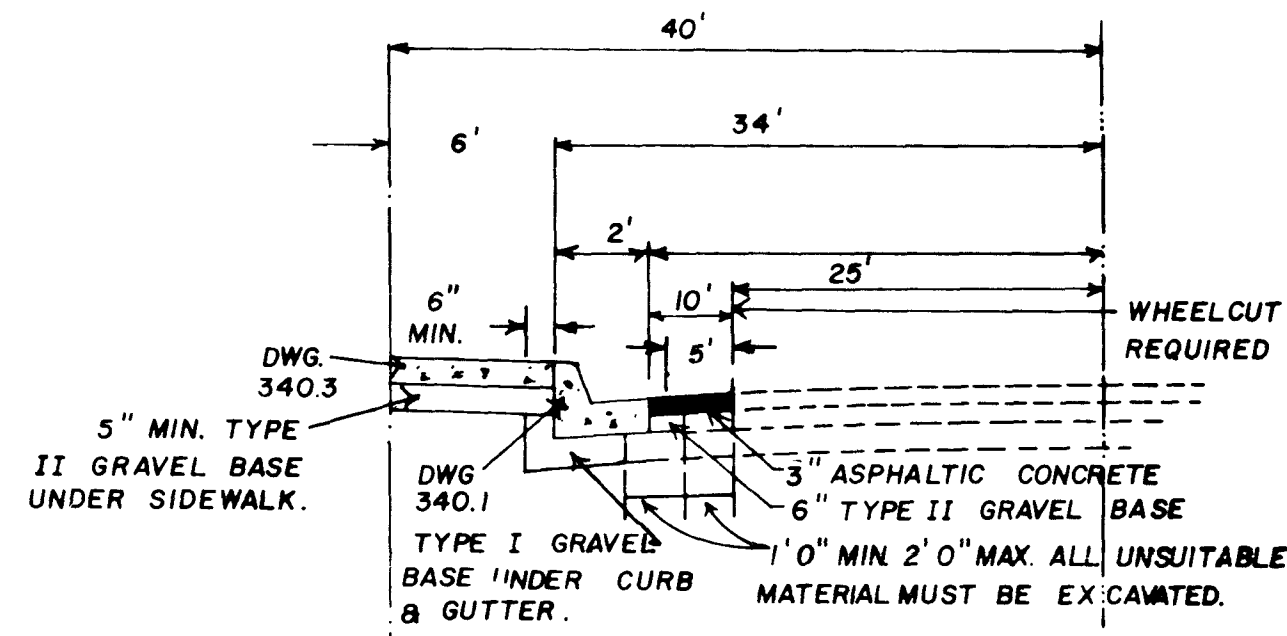
WATER		SEWER	
6" ACP	67' LF	MANHOLES	1 EA.
4" ACP	330 LF	8" VCP	511 LF
8" x 6" x 8" TAPPING TEE & THRUST BLOCK	1 EA.	SERVICE LATERAL	10 EA.
8" x 4" x 8" TAPPING TEE & THRUST BLOCK	2 EA.		
3/4" SERVICE LINE	345 LF		
FIRE HYDRANT ASSEMBLY	1 EA.		
2" BLOWOFF	2 EA.		
4" TAPPING VALVE	2 EA.		
6" TAPPING VALVE	1 EA.		
WATER METER BOX	10 EA.		

APPROVALS

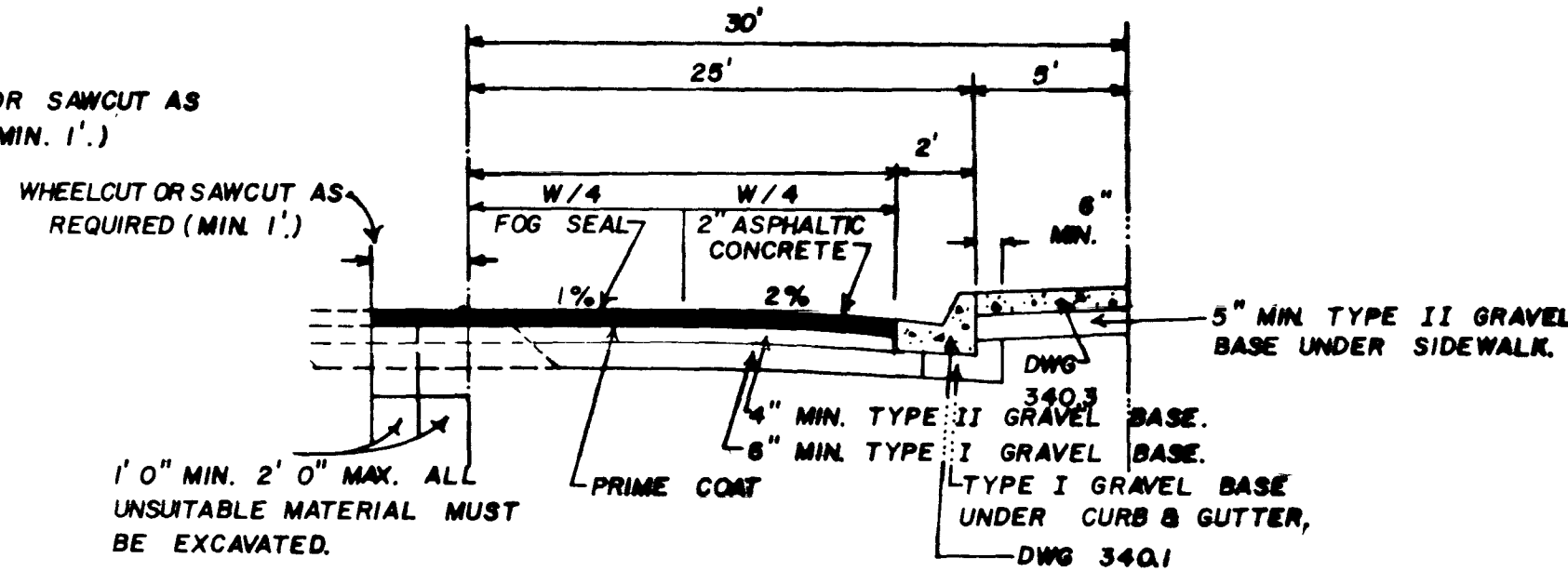
Name of Plan: Sun City
 Water: as shown will be acceptable. It is NOT approved for construction.
 Date: 8/24/79
 LVVVW: [Signature]

[Signature] 8/20
 CLV CITY ENGINEER DATE
 [Signature] 9/6/79
 FIRE DEPARTMENT DATE
 [Signature] 1-7-80
 C.L.V. SANITATION ENGINEER DATE
 C.L.V. QUALITY CONTROL ENG. DATE
 [Signature] 1-2-80
 LAS VEGAS VALLEY WATER DISTRICT DATE

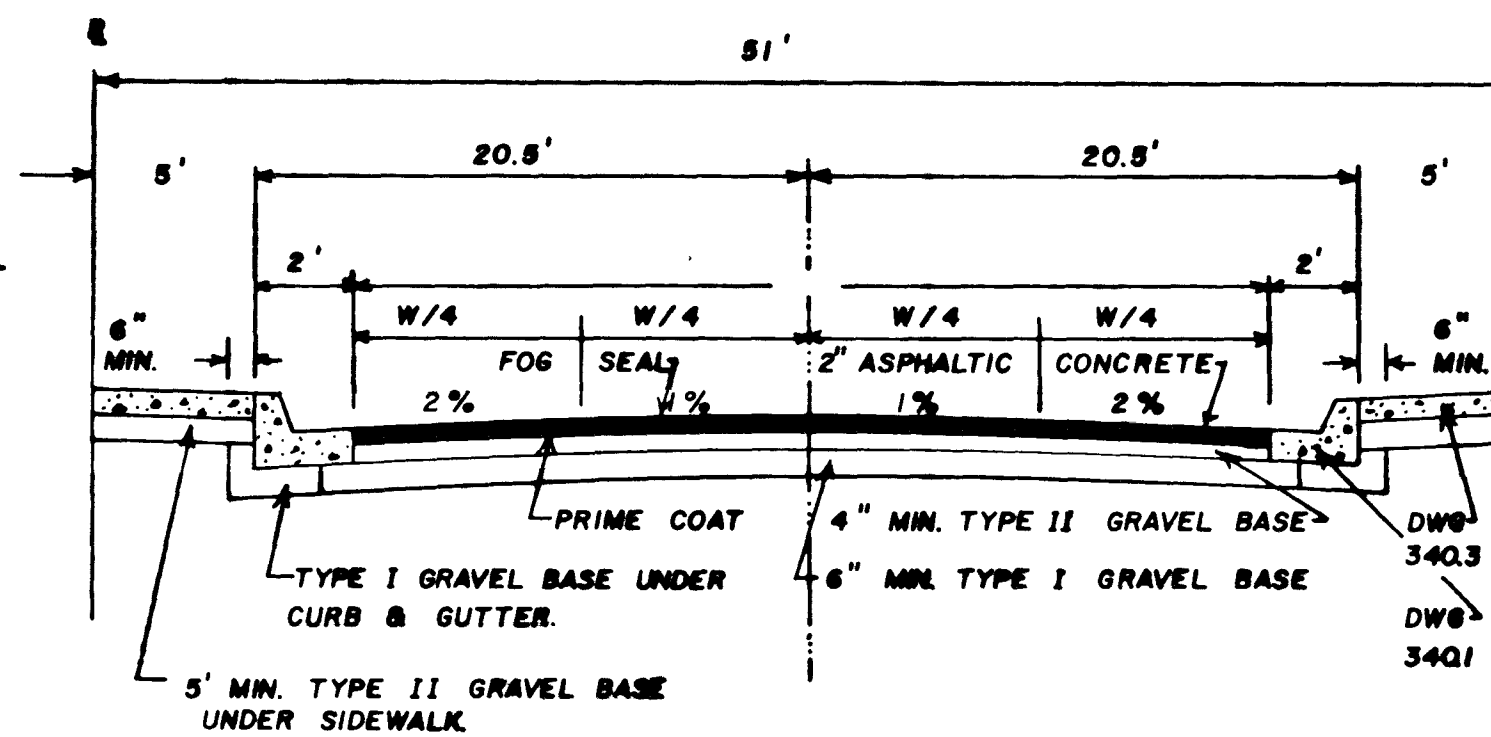
NOTE: CHISEL S.G. IN FACE OF CURB, WHEREVER SEWER OR GAS PASS UNDER THE CURB.



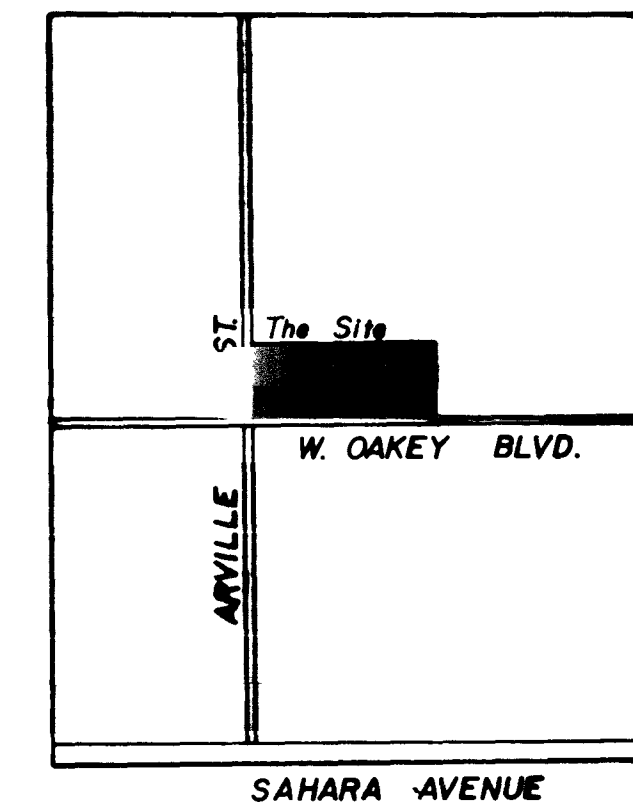
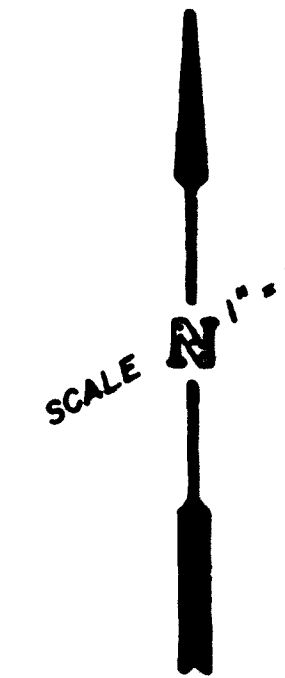
TYPICAL HALF SECTION
W. OAKEY BLVD.



TYPICAL HALF SECTION
ARVILLE ST.



TYPICAL SECTION

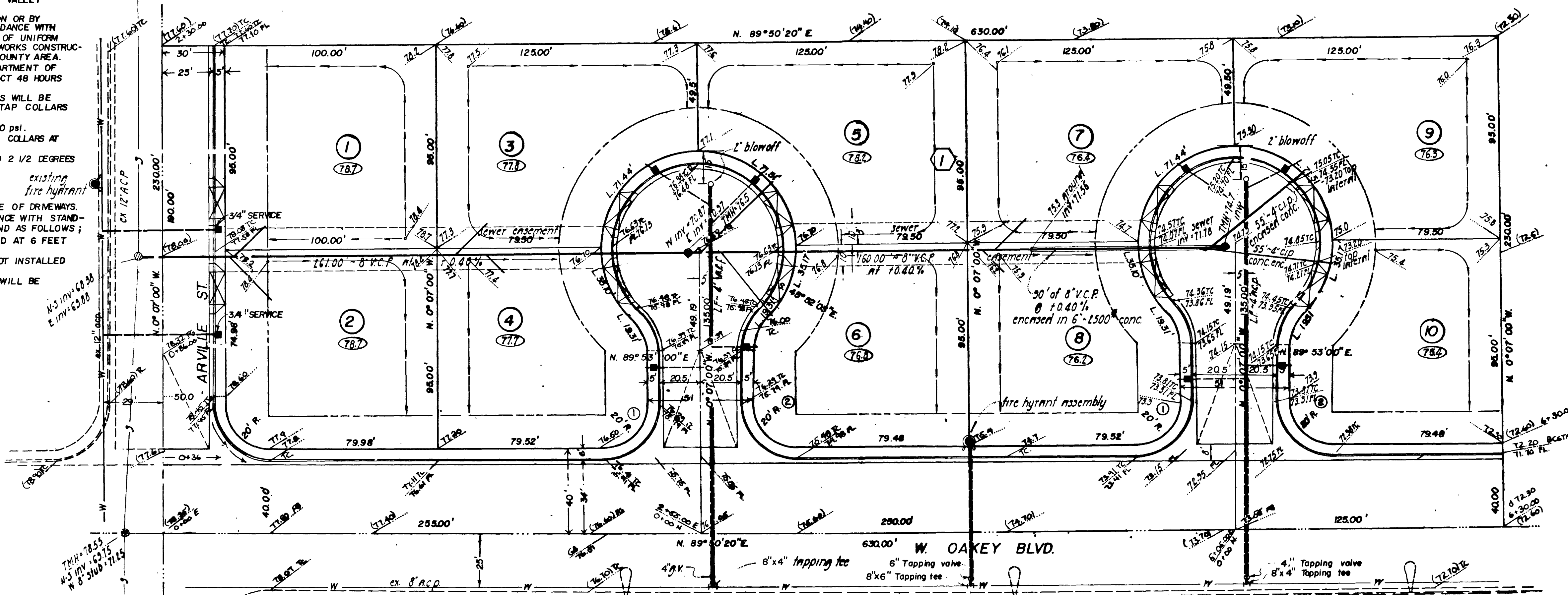


VICINITY MAP
NO SCALE

GENERAL NOTES

- 1) ALL WORK TO CONFORM TO LAS VEGAS VALLEY WATER DISTRICT STANDARD PRACTICES.
- 2) ALL WORK EXCEPT AS MODIFIED HEREON OR BY NOTE NO. 1 SHALL BE DONE IN ACCORDANCE WITH THE MOST CURRENT DRAFT OR EDITION OF UNIFORM STANDARD SPECIFICATIONS FOR PUBLIC WORKS CONSTRUCTION OFFSITE IMPROVEMENTS CLARK COUNTY AREA.
- 3) NOTICE TO BE GIVEN ENGINEERING DEPARTMENT OF THE LAS VEGAS VALLEY WATER DISTRICT 48 HOURS PRIOR TO ACTUAL CONSTRUCTION.
- 4) SERVICE SADDLES OR TAPPED COLLARS WILL BE REQUIRED ON ALL SERVICES, DOUBLE TAP COLLARS ARE NOT PERMITTED.
- 5) ALL LINES TO BE PRESSURE TESTED TO 200 PSI.
- 6) ALL VALVE BOXES SHALL HAVE CONCRETE COLLARS AT SURFACE OF PAVED AREAS.
- 7) DEFLECTION ANGLE SHALL NOT EXCEED 2 1/2 DEGREES PER 13 FOOT SECTION OF PIPE FOR PIPE SIZES SMALLER THAN 14 INCHES AND SHALL NOT EXCEED 2 DEGREES FOR PIPE SIZES BETWEEN 14" AND 16".
- 8) ALL METERS SHALL BE LOCATED OUTSIDE OF DRAINWAYS.
- 9) DETECTOR TAPE REQUIRED IN ACCORDANCE WITH STANDARD PLATE NO. 27 WHERE INDICATED AND AS FOLLOWS:
 - A) OVER ALL MAINS NOT INSTALLED AT 6 FEET FROM BACK OF CURB.
 - B) OVER ALL SERVICE LATERALS NOT INSTALLED AT RIGHT ANGLES TO MAINS.
- 10) SERVICE LATERALS FOR LOTS 1 & 2 WILL BE TAPPED ON EXISTING MAIN BY OWNERS CONTRACTOR UNDER DIRECTION OF THE LAS VEGAS VALLEY WATER DISTRICT.

BENCH MARK: CLV #1616 B1
 EXPOSITION & ARVILLE
 ELEV. 2175.97

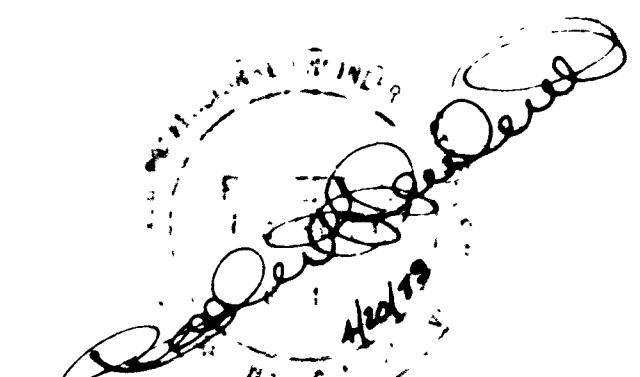


LEGEND

- ⑨ LOT NO.
- ① BLOCK NO.
- BOUNDARY
- SETBACK
- LOT LINE
- WATER RUN-OFF
- ⊙ PAD ELEVATION

LEGAL DESCRIPTION

A PORTION OF THE SOUTHWEST 1/4 OF THE NORTHEAST 1/4 OF SECTION 6, TOWNSHIP 21 SOUTH, RANGE 61 EAST, M.D.B. & M. LAS VEGAS, NEVADA.



SUN CITY

GRADING PLAN • SEWER PLAN AND PROFILE
 WATER PLAN
 FOR: JEFF SHAW, ET AL

REVISED: 6-19-79
 REVISED: 6-21-79
 REVISED: 8-8-79

GRID ENGINEERING, INC.
 4040 W. PIONEER
 LAS VEGAS, NEVADA.
 (702) 873-6606

SHEET 3 OF 3 SHT.

5267

19-8-30 107-2834

