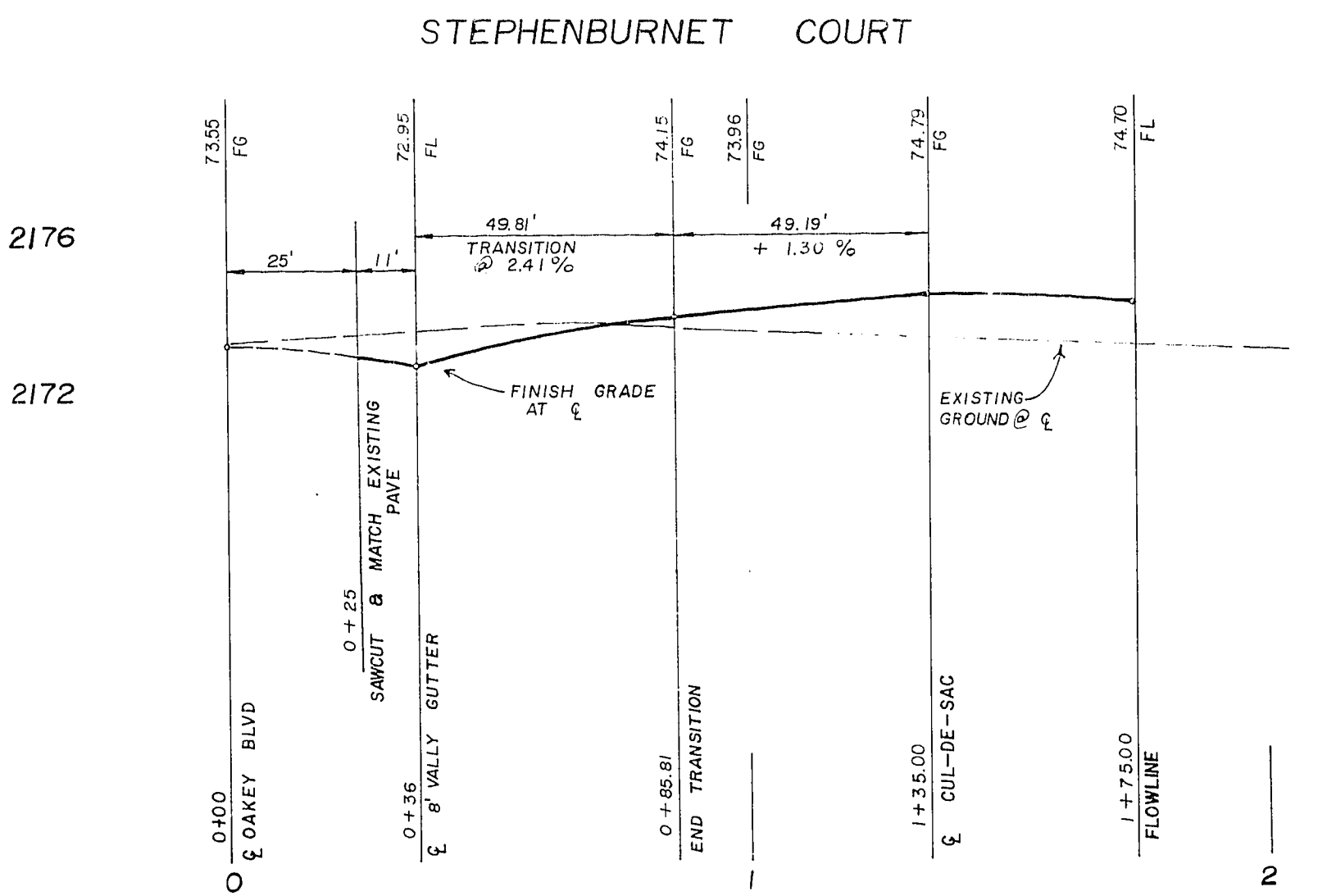
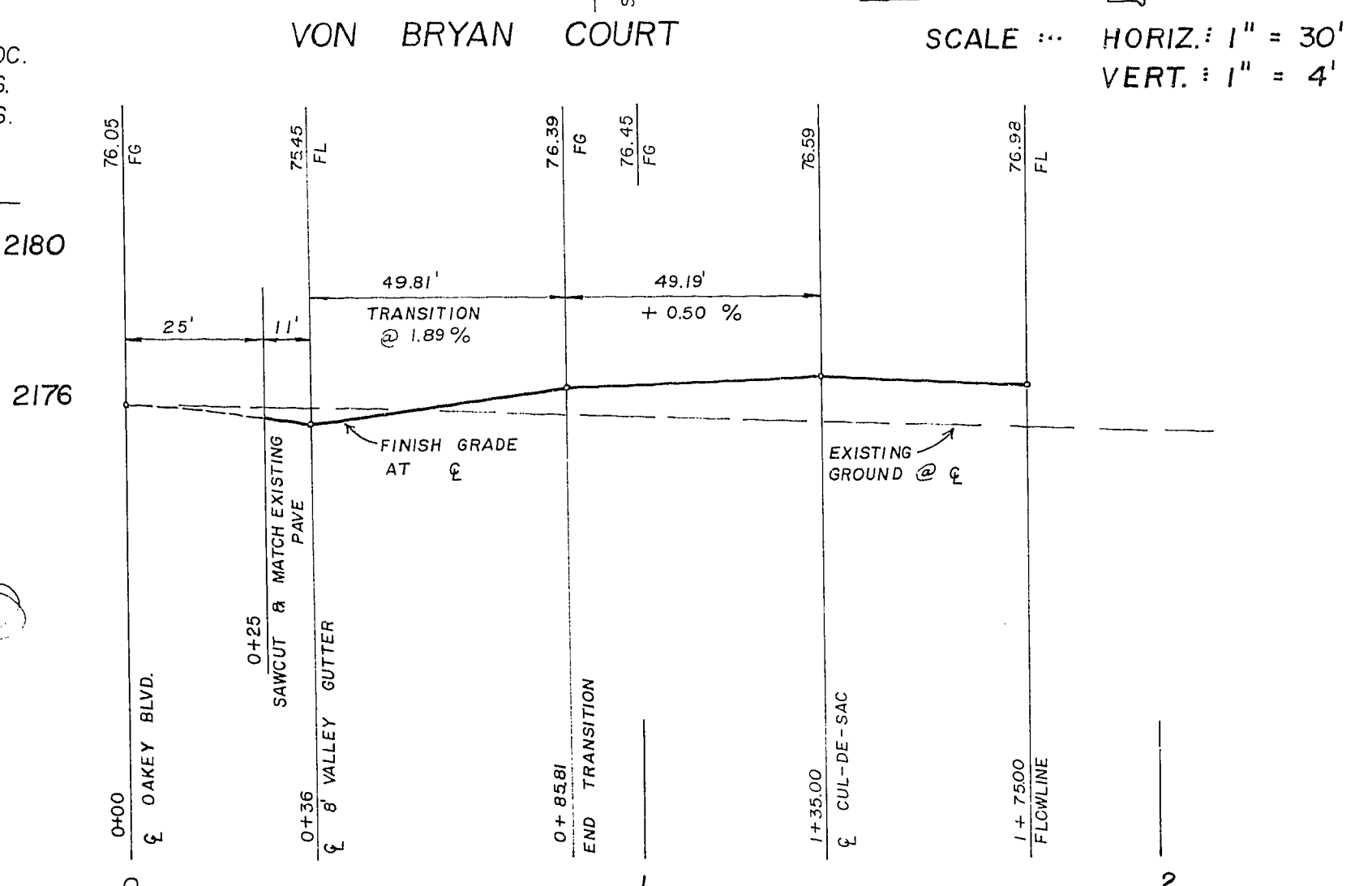
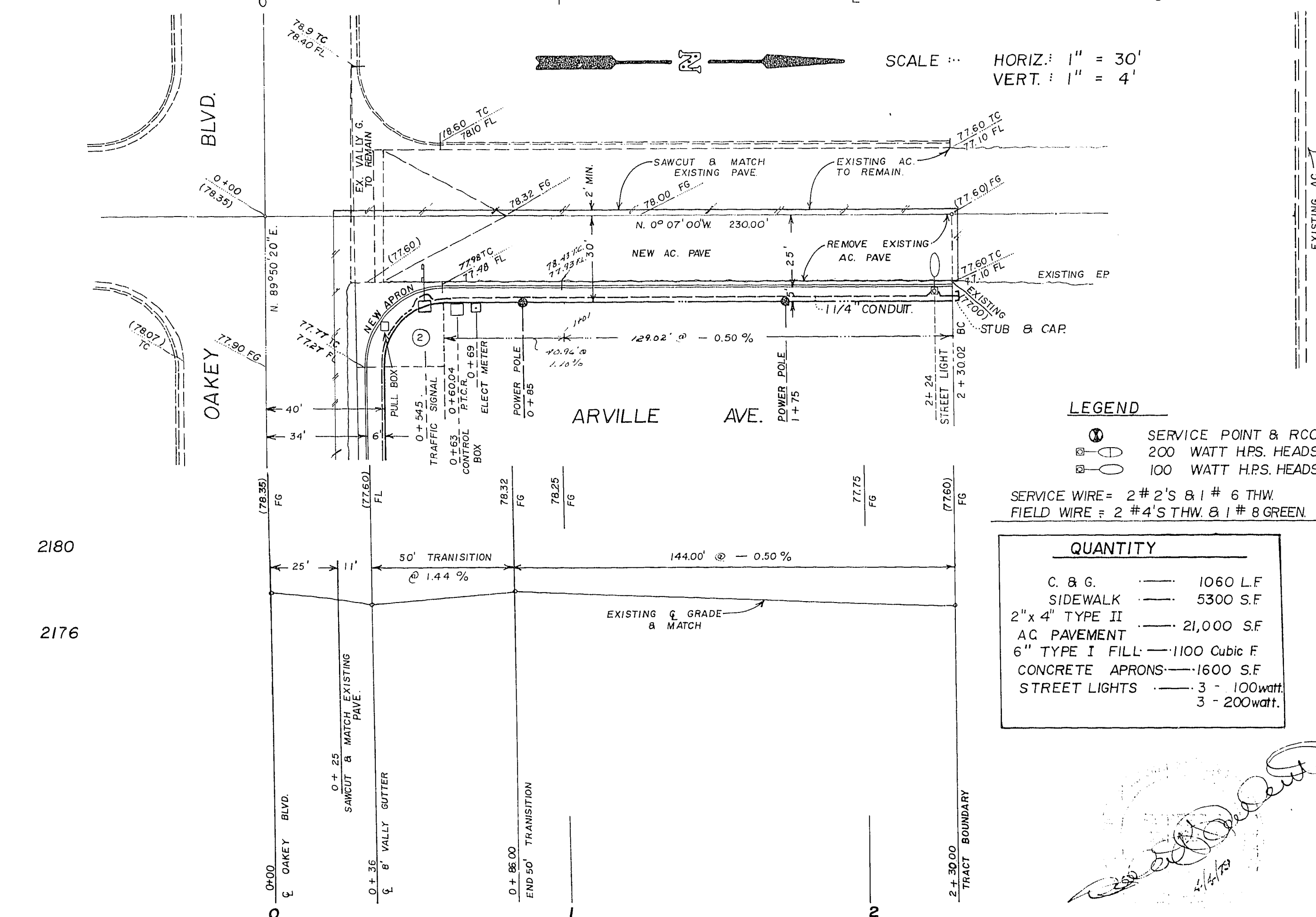
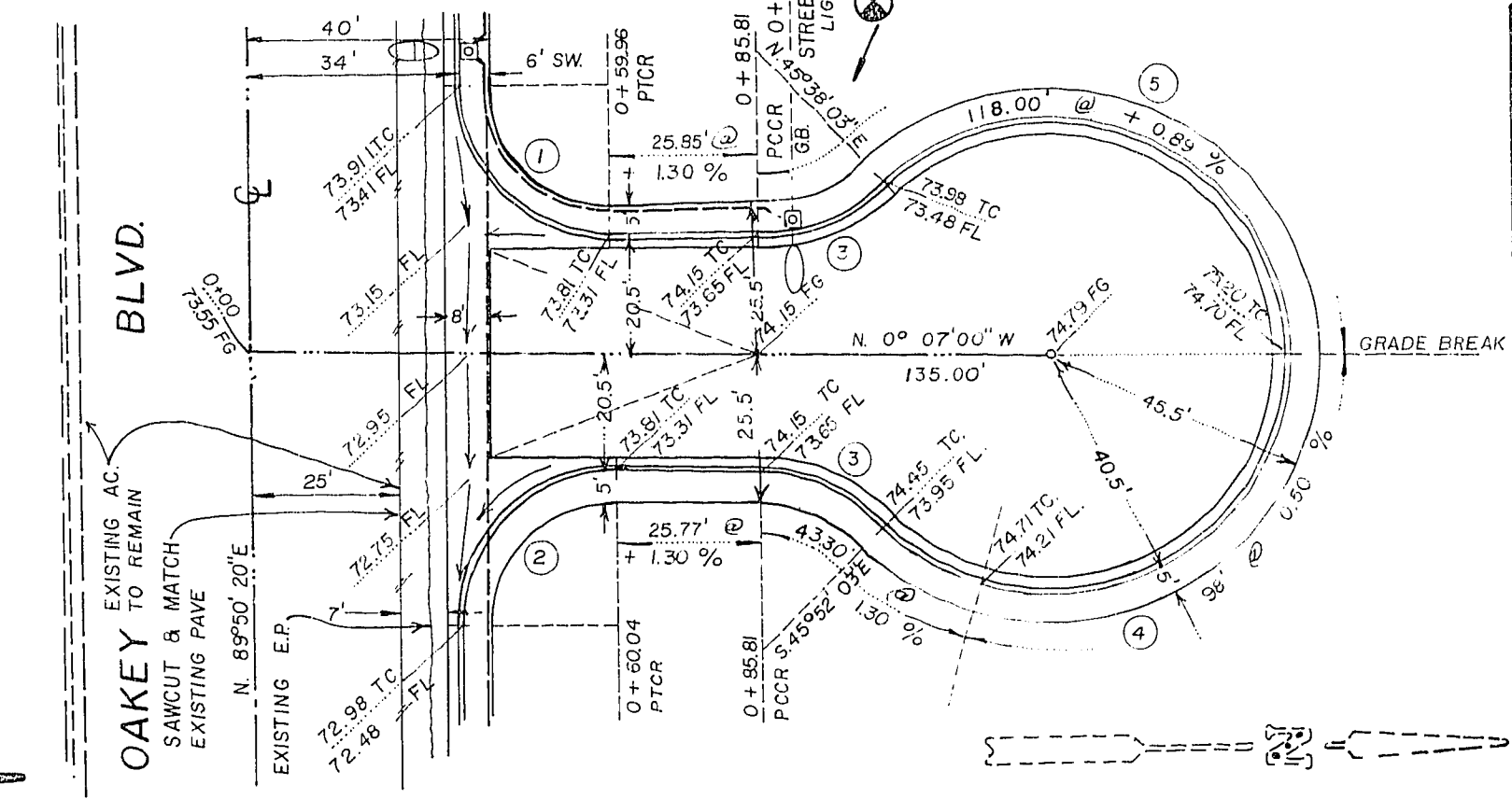
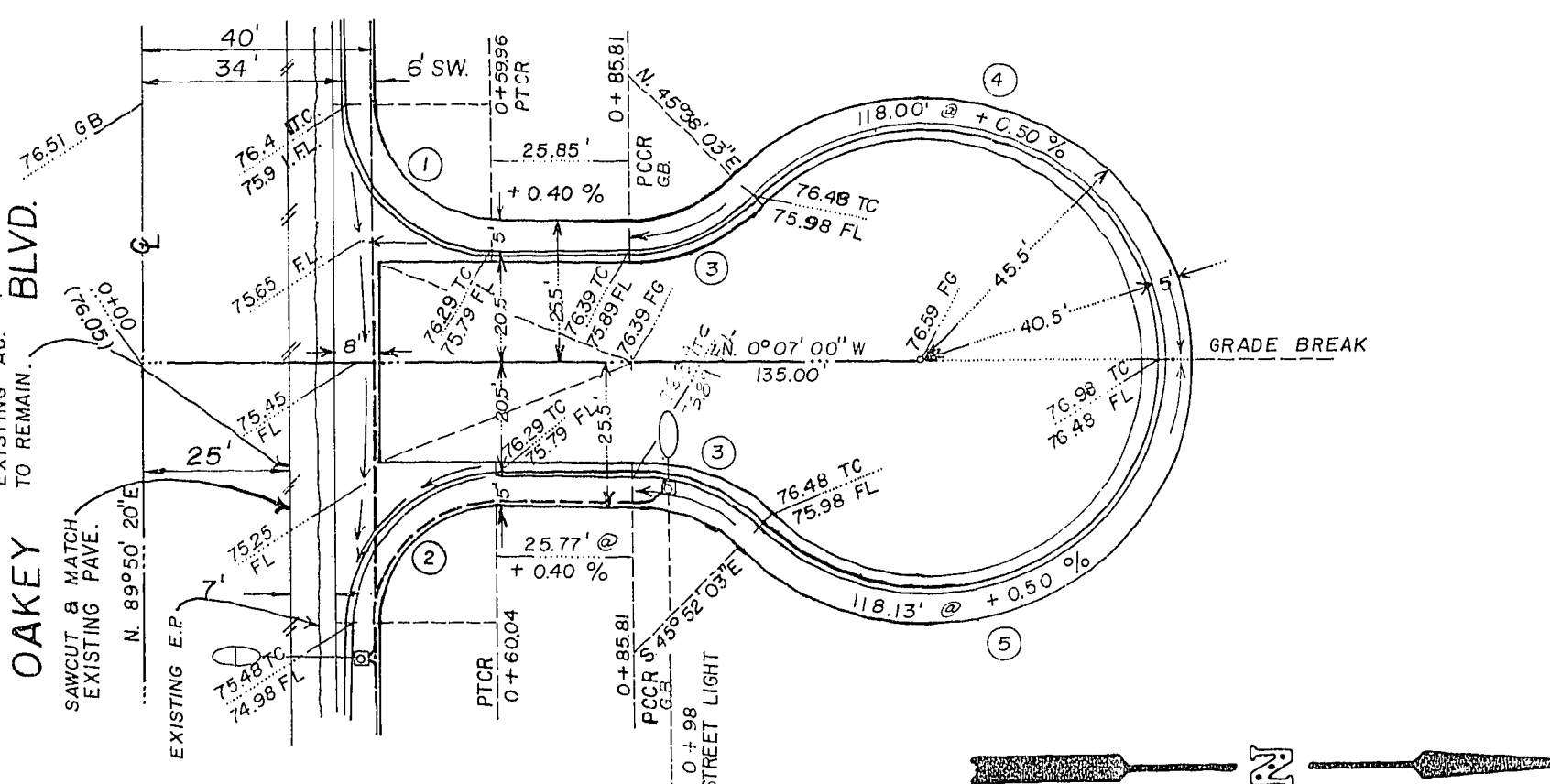
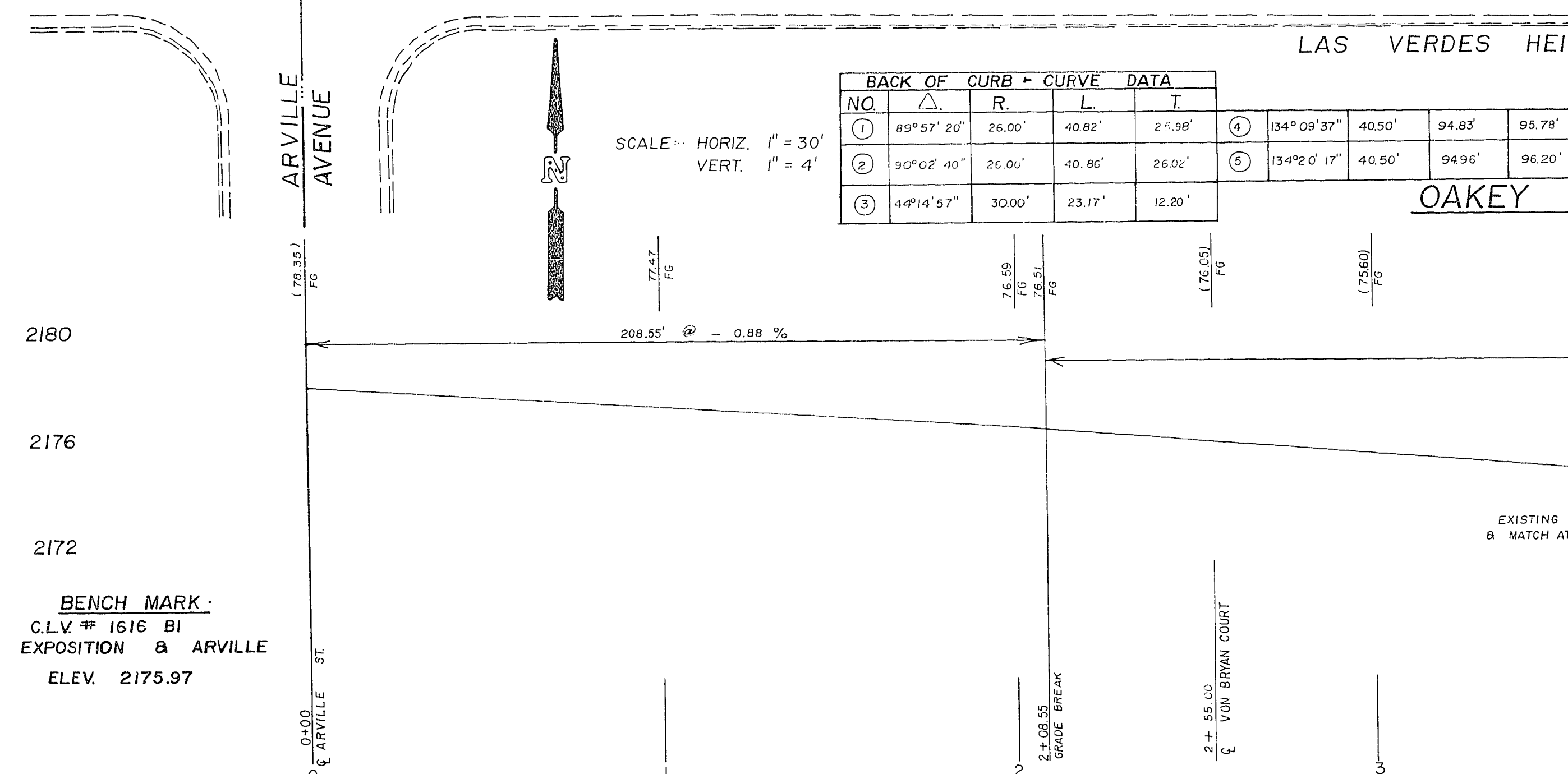
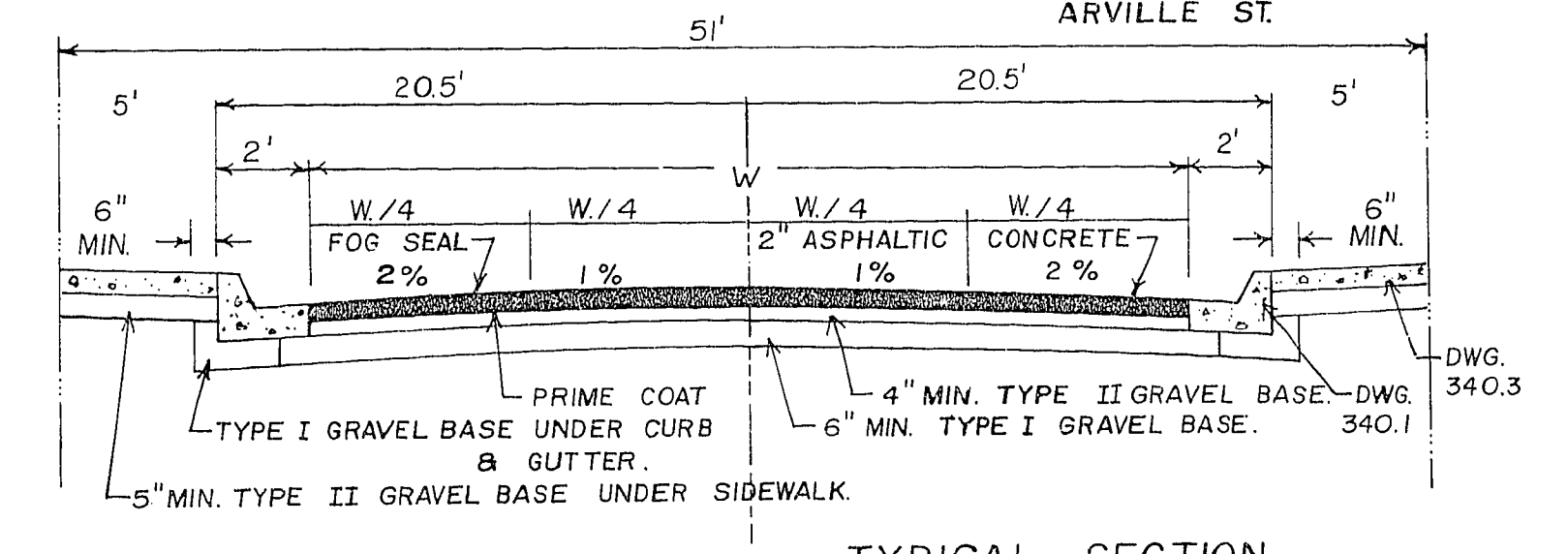
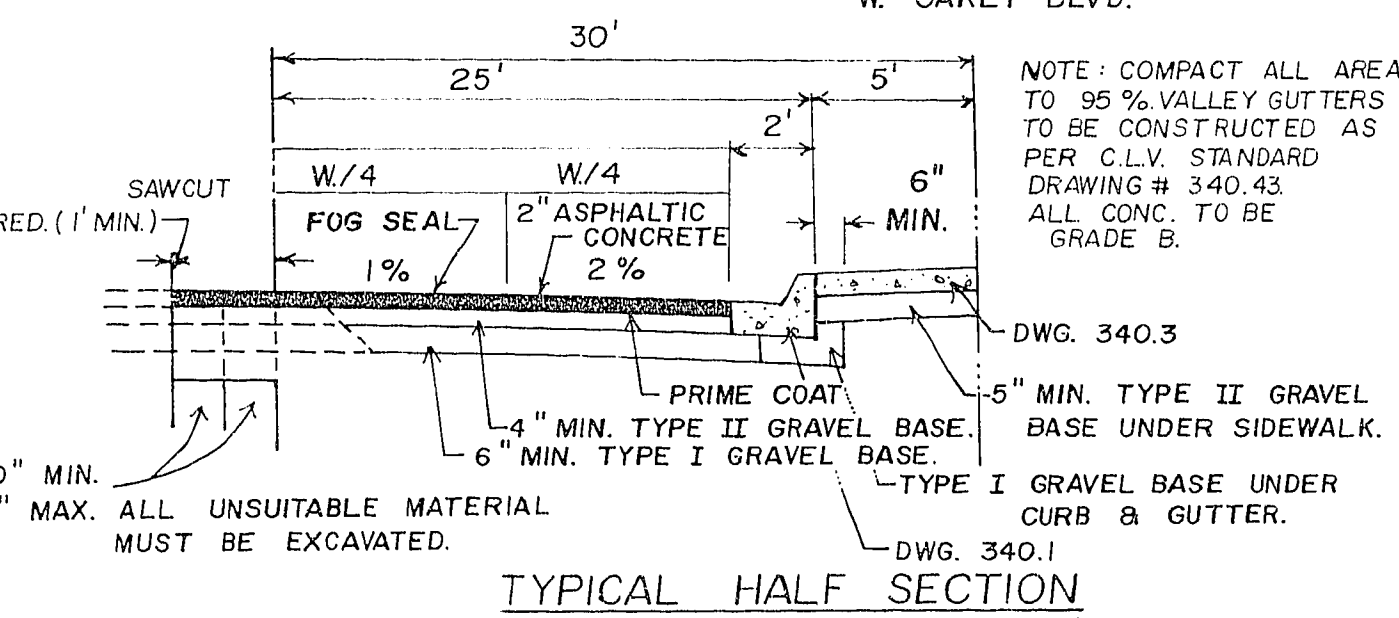
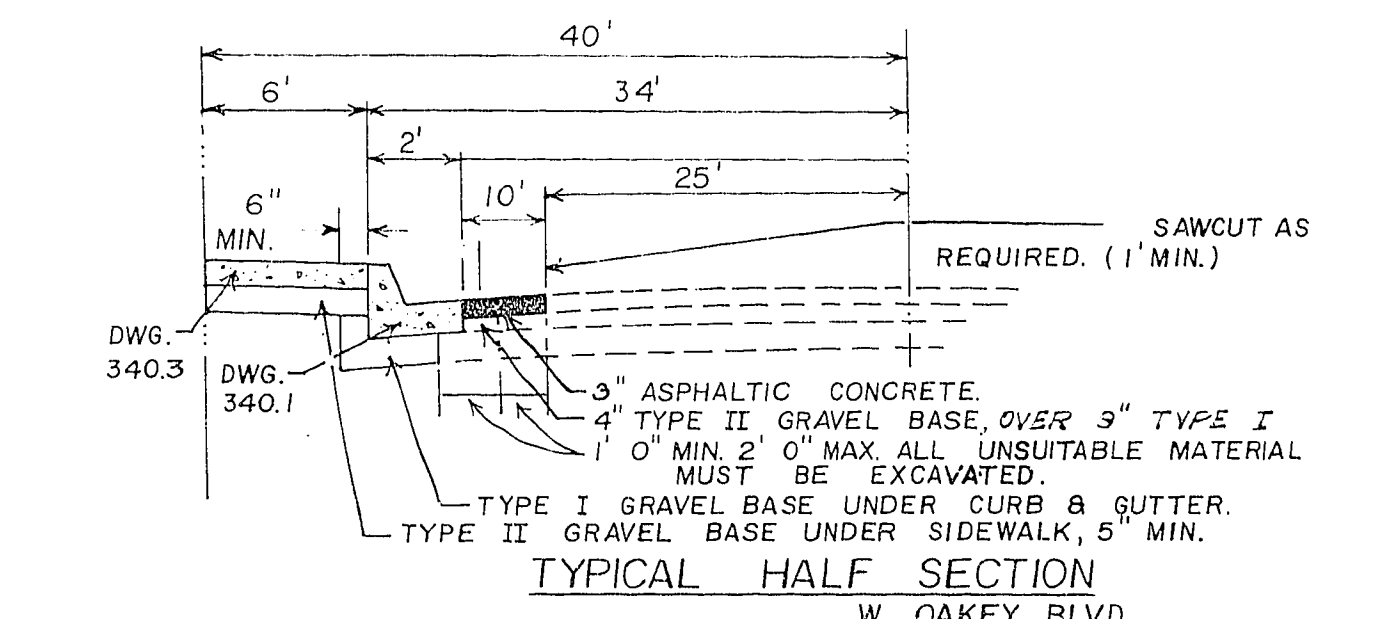


BACK OF CURB - CURVE DATA

NO.	Δ	R	L	T	NO.	Δ	R	L	T
1	89°57'20"	26.00'	40.82'	24.98'	4	134°09'37"	40.50'	94.83'	95.78'
2	90°02'40"	26.00'	40.86'	26.02'	5	134°20'17"	40.50'	94.96'	96.20'
3	4°14'57"	30.00'	23.17'	12.20'					

APPROVALS

NEVADA POWER CO. DATE 1/18/80
 CLY. ELECT. SUPERVISOR
 TRAFFIC ENGINEER DATE 1/18/80
 CLY. ELECT. COORDINATOR DATE 1/18/80
 QUALITY CONTROL ENGINEER DATE



LEGEND

- ① SERVICE POINT & R.C.C. 200 WATT HRS. HEADS.
- ② 100 WATT HRS. HEADS.

SERVICE WIRE = 2 # 2'S & 1 # 6 THW
 FIELD WIRE = 2 # 4'S THW & 1 # 8 GREEN

QUANTITY

- C. & G. 1060 L.F.
- SIDEWALK 5300 S.F.
- 2" x 4" TYPE II AC PAVEMENT 21,000 S.F.
- 6" TYPE I FILL 1100 Cubic F.
- CONCRETE APRONS 1600 S.F.
- STREET LIGHTS 3 - 100 watt.
- 3 - 200 watt.

REVISIONS

6-19-79
 6-21-79

A PORTION OF THE SW 1/4,
 NE. 1/4 OF SEC 6
 T. 21 S., R. 61 E., MD. 88 M.
 CITY OF LAS VEGAS,
 NEVADA

FOR: G. SHAW, ET AL.

SUN CITY
 STREET PLAN & PROFILE &
 STREET LIGHTING PLAN
 OAKLEY BOULEVARD
 ARVILLE STREET
 VON BRYAN CT. & STEPHENBURNET CT.

