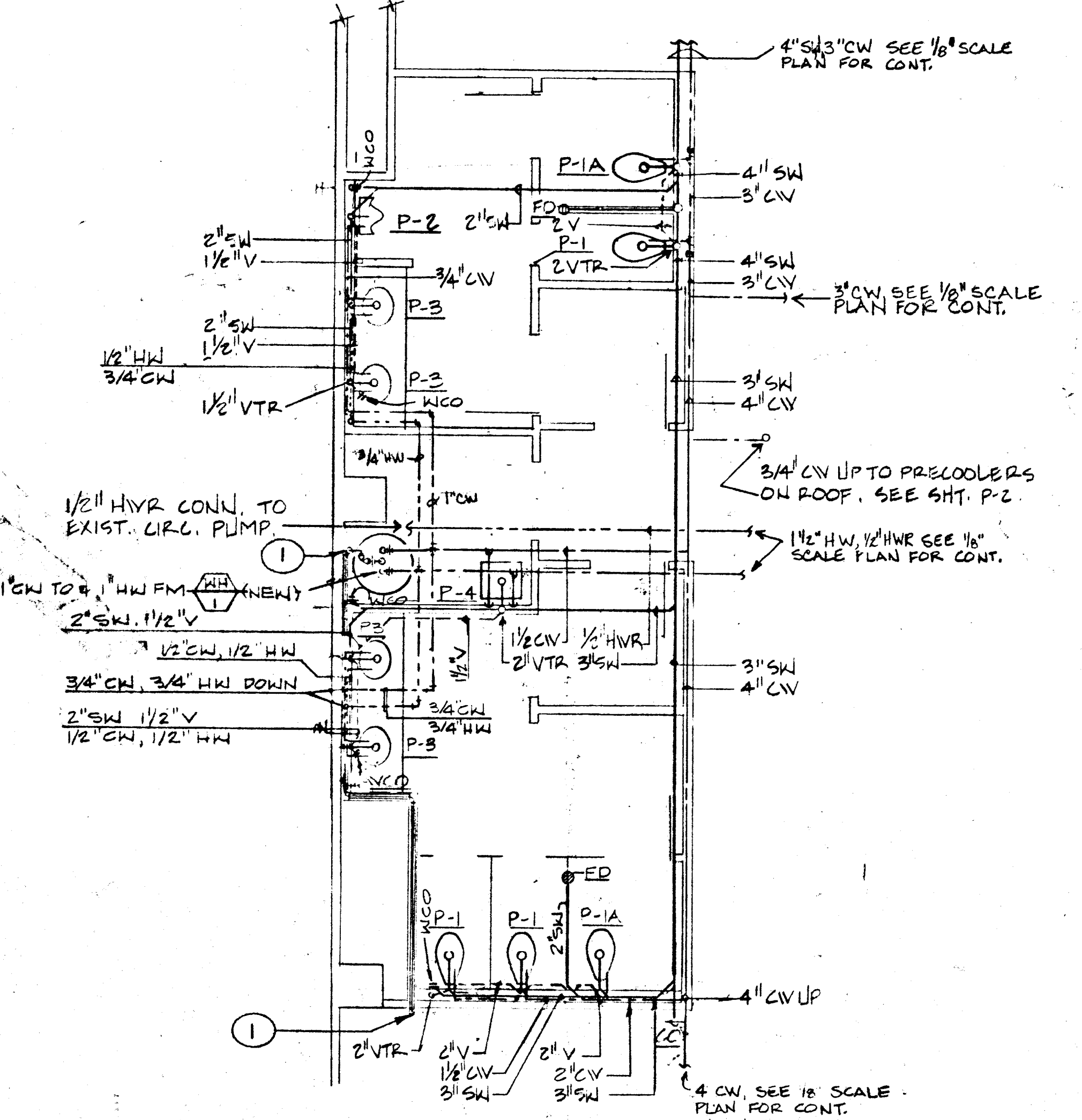


PLUMBING FIXTURE SCHEDULE						
SYM.	DESCRIPTION	ROUGH-IN SIZES				REMARKS
		SW	V	CW	HW	
P-1	WATER CLOSET	3	2	1	-	KOHLER WELL COMM WATER GUARD NO K-4250 ET. FLR. MTD. W/ SLOAN 110-3 FLUSH VALVE W/ VACUUM BRKR. & WHITE SOLID PLASTIC OPEN FRONT SEAT W/ CHECK HINGE.
P-1A	WATER CLOSET - HANDICAP	3	2	1	-	KOHLER HIGHCLIFF WATER GUARD NO K-42 48-ET. FLR. MTD. 18" HIGH BOWL W/ SLOAN 110-3 FLUSH VALVE W/ VACUUM BRKR. & SAME SEAT AS P-1.
P-2	URINAL	2	1 1/2	3/4	-	KOHLER BAEDON WATER GUARD NO K-4280-T. WALL HUNG W/ SLOAN 186 FLUSH VALVE W/ VACUUM BRKR.
P-3	LAVATORY	1 1/2	1 1/2	1/2	1/2	KOHLER PENNINGTON NO K-2125 COUNTER-TOP W/ NO K-7404-T CTE. SET, K-7606 SUPPLY RISERS W/ STOPS, K-2000 "P" TRAP, & K-715 GRID STRAINER.
P-4	SERVICE SINK	3	2	1/2	1/2	KOHLER WHITEY NO K-6210 W/ NO K-8228 FAUCET W/ VACUUM BRKR. ELBEEZ HOSE & WALL HOOK, & NO K-3146 STRAINER.
P-5	ELECTRIC WATER COOLER	1 1/2	1 1/2	1/2	-	HAWES NO HWDF10, DUAL HT, 0.5 GPH, 1/4 HP, 6 SAMPS, 115 VOLT, EL KAY MODEL ERP2-S-C
FD	FLOOR DRAIN	2	1 1/2	-	-	JAY R. SMITH NO 2010-A
RD	ROOF DRAIN	(4)	-	-	-	JAY R. SMITH 1010 W/ UNDERDECK CLAMP.
OD	OVERFLOW DRAIN	(4)	-	-	-	JR SMITH 1080 WITH UNDER-DECK CLAMP.
FS	FLOOR SINK	2	1 1/2	-	-	JR SMITH 3110 (12X12 X 6 D") W/ 1/2, 3/4 OR FULL GATE AS REQ'D.

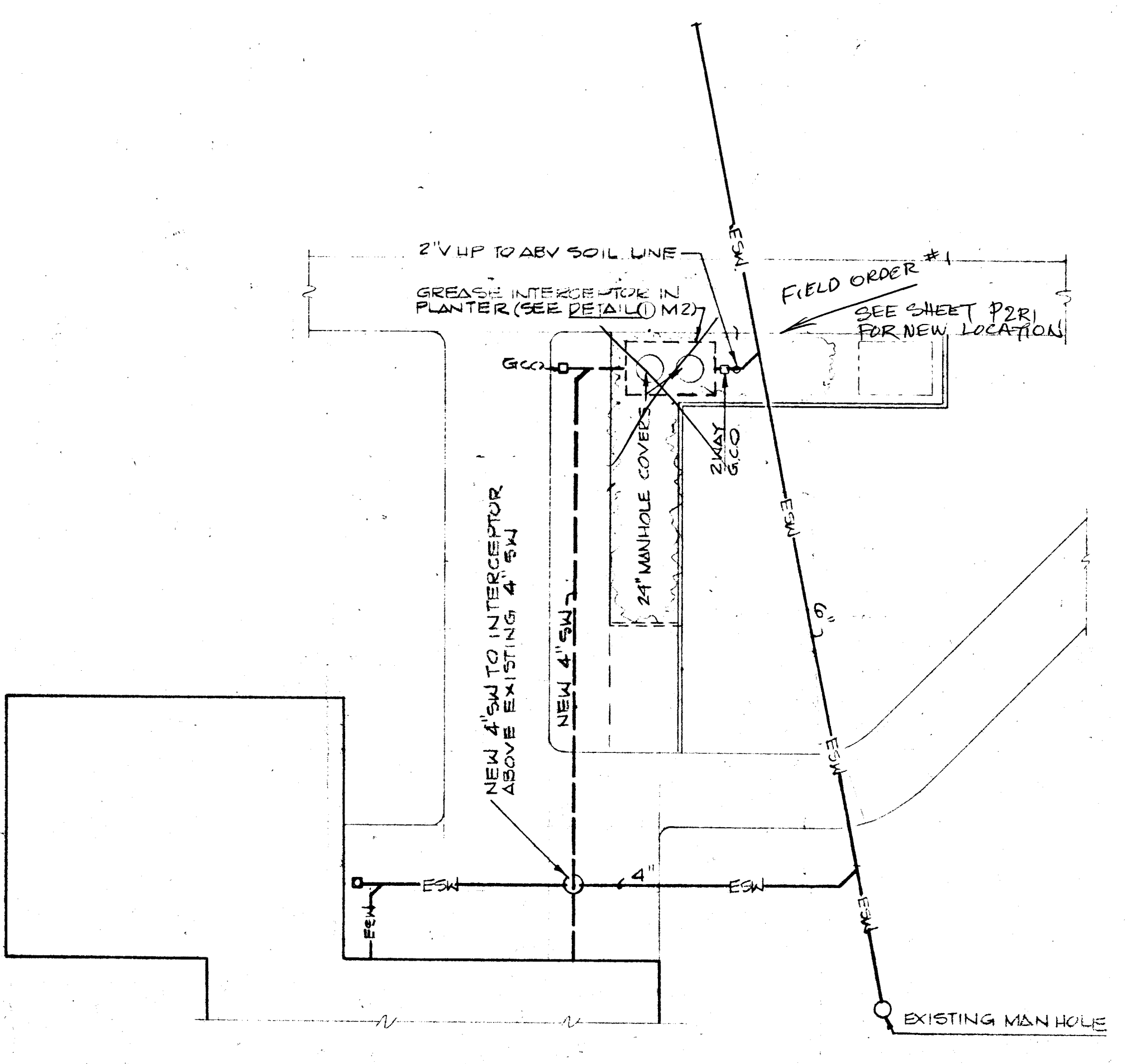
\* LAVATORY FAUCET SHALL HAVE INTEGRAL MFR. SUPPLIED FLOW RESTRICTOR TO RESTRICT FLOW UP TO 2.5 GPM MAX.

WATER HEATER SCHEDULE					
MARK	TYPE	STORAGE CAPACITY	ELECTRICAL		MANUFACTURER & MODEL NO.
			V	PH	
AWH-1	ELECTRIC STORAGE	119 GALLONS	208	1	A.O. SMITH MODEL DEN 120

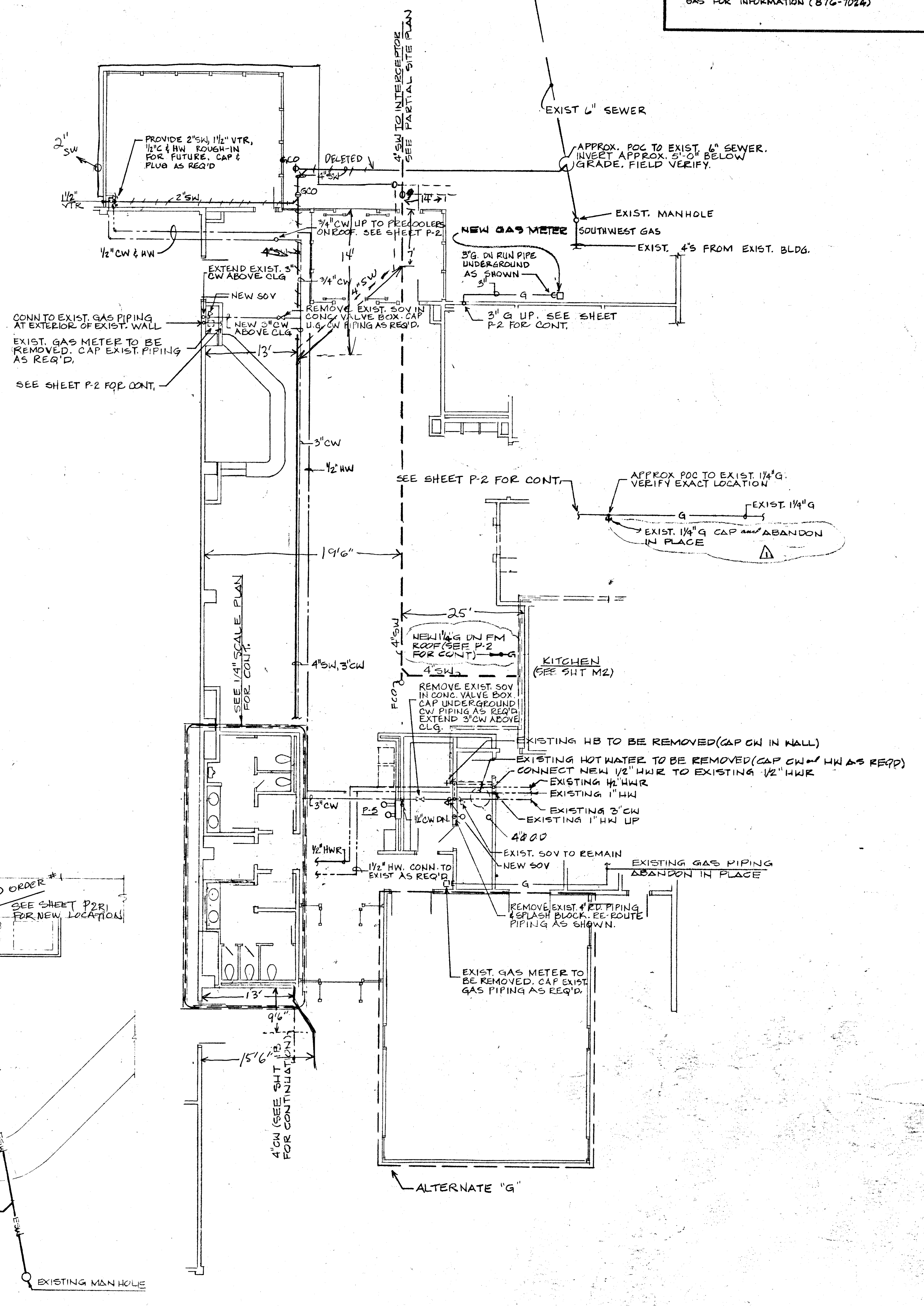


① RUN PRESSURE TEMPERATURE RELIEF VALVE (PTRV) DISCHARGE LINE FULL SIZE FROM WATER HEATER TO EXTERIOR AND TERMINATE 6" AFG W/ 90° ELBOW. DRAIN LINE SHALL BE COPPER.

PARTIAL PLUMBING FLOOR PLAN  
1/4" = 1'-0"



PARTIAL SITE PLAN  
SCALE: 1/8" = 1'-0"



PLUMBING FLOOR PLAN  
1/8" = 1'-0"

CONTRACTOR SHALL INCLUDE IN HIS BID THE COST OF ALL WORK OF UTILITY COMPANIES. PLEASE NOTIFY STAFF OFFICE OF SOUTHWEST GAS FOR INFORMATION (876-7024)

REVISIONS  
DATE 7-7-05  
DRAWN 5-9-06  
CHECKED 6-18-06

CAMBEIRO & CAMBEIRO LTD. ARCHITECTS  
PLANNERS  
MEMBERS OF THE AMERICAN INSTITUTE OF ARCHITECTS

PROJECT NO. 0220  
SHEET NO. P-1  
OF 2 OF 3