

RANCHO NEVADA ESTATES UNIT NUMBER 2

BEING A PORTION OF THE NORTHWEST 1/4 OF SECTION 32, T-20-S, R-61-E, M.D.B. & M. CITY OF LAS VEGAS, COUNTY OF CLARK, STATE OF NEVADA

ENGINEER'S CERTIFICATE

I, JAY M. RASSLER, A DULY REGISTERED PROFESSIONAL ENGINEER AND LAND SURVEYOR, DO HEREBY CERTIFY, AS AGENT FOR TROJAN ENGINEERING INC., THAT THIS IS A TRUE AND ACCURATE PLAT OF LAND SURVEYED BY ME OR UNDER MY DIRECT SUPERVISION, AT THE INSTANCE OF ROYAL CREST, INC., A NEVADA CORPORATION, OWNER OF SAID LAND AND LAID OUT INTO LOTS, BLOCKS, STREETS, AND EASEMENTS AS SHOWN, THAT THE LOCATION OF SAID LOTS, BLOCKS, STREETS, AND EASEMENTS HAS BEEN DEFINITELY ESTABLISHED IN STRICT ACCORDANCE WITH THE LAW AND AS SHOWN HEREON, THAT SAID LOTS, BLOCKS, STREETS, AND EASEMENTS ARE SITUATED WHOLLY WITHIN A PORTION OF THE NORTHWEST 1/4 OF SECTION 32, T-20-S, R-61-E, M.D.B. & M. CITY OF LAS VEGAS, COUNTY OF CLARK, STATE OF NEVADA, AND MORE PARTICULARLY DESCRIBED AS FOLLOWS TO WIT: COMMENCING AT THE SOUTHWEST CORNER OF THE NORTHWEST QUARTER OF SAID SECTION 32, THENCE S89°28'51"E ALONG THE CENTER LINE OF ALTA DRIVE A DISTANCE OF 131.56' FEET TO A POINT, THENCE N00°08'00"W ALONG THE CENTER LINE OF CAMPBELL DRIVE A DISTANCE OF 1326.84 FEET TO A POINT ON A TANGENT CURVE CONCAVE TO THE EAST AND HAVING A RADIUS OF 274.57 FEET, THENCE NORTHERLY ALONG SAID CURVE AN ARC DISTANCE OF 0.40 FEET AND SUBTENDING AN ANGLE OF 00°05'00" TO THE TRUE POINT OF BEGINNING, THENCE SUTTING NORTHERLY ALONG SAID CURVE AN ARC DISTANCE OF 3710 FEET AND SUBTENDING AN ANGLE OF 0°44'30" TO A POINT, THENCE N00°08'00"W ALONG THE CENTER LINE OF CAMPBELL DRIVE A DISTANCE OF 1326.84 FEET TO A POINT, THENCE S77°30'52"W A DISTANCE OF 105.84 FEET TO A POINT, THENCE S86°10'14"W A DISTANCE OF 110.50 FEET TO A POINT, THENCE S35°12'15"W A DISTANCE OF 53.76 FEET TO A POINT, THENCE N54°47'45"W A DISTANCE OF 207.58 FEET TO A POINT, THENCE N75°12'18"E A DISTANCE OF 1033.76 FEET TO A POINT, THENCE S83°17'55"E A DISTANCE OF 1024.34 FEET TO A POINT, THENCE N89°22'20"W A DISTANCE OF 1353.73 FEET TO THE TR.B. SAID PARCEL CONTAINS 40.1266 ACRES OR LESS AND THEREIN OF 69 LOTS. SURVEY COMPLETED JULY 15, 1965

JAY M. RASSLER
JAY M. RASSLER R.P.E., R.L.S. 1524

BASIS OF BEARING

BASIS OF BEARING IS N00°08'00"W, BEING THE CENTER LINE OF CAMPBELL DRIVE AS RECORDED IN BOOK 12 OF PLATS, IN THE OFFICE OF THE COUNTY RECORDER, COUNTY OF CLARK, STATE OF NEVADA.

CITY ENGINEER'S CERTIFICATE

I, R.P. SAUER, CITY ENGINEER OF THE CITY OF LAS VEGAS, COUNTY OF CLARK, STATE OF NEVADA, DO HEREBY CERTIFY THAT I HAVE EXAMINED THE FINAL MAP OF RANCHO NEVADA ESTATES UNIT NO. 2, THAT THE SUBDIVISION AS SHOWN HEREON IS SUBSTANTIALLY THE SAME AS IT APPEARED ON THE TENTATIVE MAP AND APPROVED ALTERATIONS THEREOF, THAT ALL PROVISIONS OF THE PLANNING AND ZONING ACT OF THE STATE OF NEVADA, AND ANY LOCAL ORDINANCES APPLICABLE AT THE TIME OF THE TENTATIVE MAP HAVE BEEN COMPLIED WITH, AND THAT I AM SATISFIED THAT THIS MAP IS TECHNICALLY CORRECT.

DATE THIS 15th DAY OF December, 1965

R.P. SAUER
R.P. SAUER CITY ENGINEER R.P.E. 396

ACKNOWLEDGEMENT

STATE OF NEVADA) ss
COUNTY OF CLARK)

ON THIS 1st DAY OF December, 1965, PERSONALLY APPEARED BEFORE ME DUANE A. OLSON, A NOTARY PUBLIC IN AND FOR SAID COUNTY AND STATE, E. COLLINS AND M. M. COLLINS, KNOWN TO ME TO BE THE PRESIDENT AND SECRETARY OF THE CORPORATION THAT EXECUTED THE FORGOING INSTRUMENT, AND UPON OATH, DID EACH DEPOSE THAT HE IS THE OFFICER OF SAID CORPORATION AND THAT THE SEAL AFFIXED TO SAID INSTRUMENT IS THE CORPORATE SEAL OF SAID CORPORATION, THAT THE SIGNATURES TO SAID INSTRUMENT WERE MADE BY THE OFFICERS OF SAID CORPORATION AS INDICATED AFTER SAID SIGNATURES, AND THAT THE SAID CORPORATION EXECUTED THE SAID INSTRUMENT FREELY AND VOLUNTARILY AND FOR THE USES AND PURPOSES THEREIN MENTIONED.

Duane A. Olson
NOTARY PUBLIC IN AND FOR SAID COUNTY AND STATE, DUANE A. OLSON

MY COMMISSION EXPIRES May 1, 1967

OWNERS CERTIFICATE & DEDICATION

ROYAL CREST, INC., A NEVADA CORPORATION, DOES HEREBY CERTIFY THAT IT IS THE LEGAL OWNER OF THE PARCEL OF LAND WHICH IS SHOWN ON THE PLAT OF RANCHO NEVADA ESTATES UNIT NO. 2, AND DOES HEREBY CONSENT TO THE PREPARATION AND RECORDATION OF THIS MAP OF PLAT, AND DOES HEREBY OFFER AND DEDICATE ALL OF THE STREETS, EASEMENTS AND LOT 52, BLOCK 1, AS INDICATED AND OUTLINED HEREON, FOR THE USE OF THE CITY OF LAS VEGAS, NV. FURTHER, ROYAL CREST, INC., A NEVADA CORPORATION, OWNER OF THE WITHIN PLATTED LANDS, DOES HEREBY GRANT AND CONVEY TO THE NEVADA POWER COMPANY, ITS SUCCESSORS AND ASSIGNS, AND THE CENTRAL TELEPHONE COMPANY, ITS SUCCESSORS AND ASSIGNS, A PERMANENT EASEMENT AND RIGHT OF WAY AS SHOWN BY THE AREAS MARKED 'UTILITY EASEMENTS' ON THE WITHIN PLAT, FOR CONSTRUCTION AND MAINTENANCE OF ELECTRICAL AND TELEPHONE POLES, LINES, AND APPURTENANCES, TOGETHER WITH THE RIGHT OF ACCESS THERETO. NO PART OF THE PARCELS MARKED 'NOT A PART' IS OFFERED FOR DEDICATION.

DATED 15th DAY OF December, 1965

ROYAL CREST, INC.
E. A. COLLINS
E. A. COLLINS PRESIDENT
M. M. COLLINS
M. M. COLLINS SECRETARY

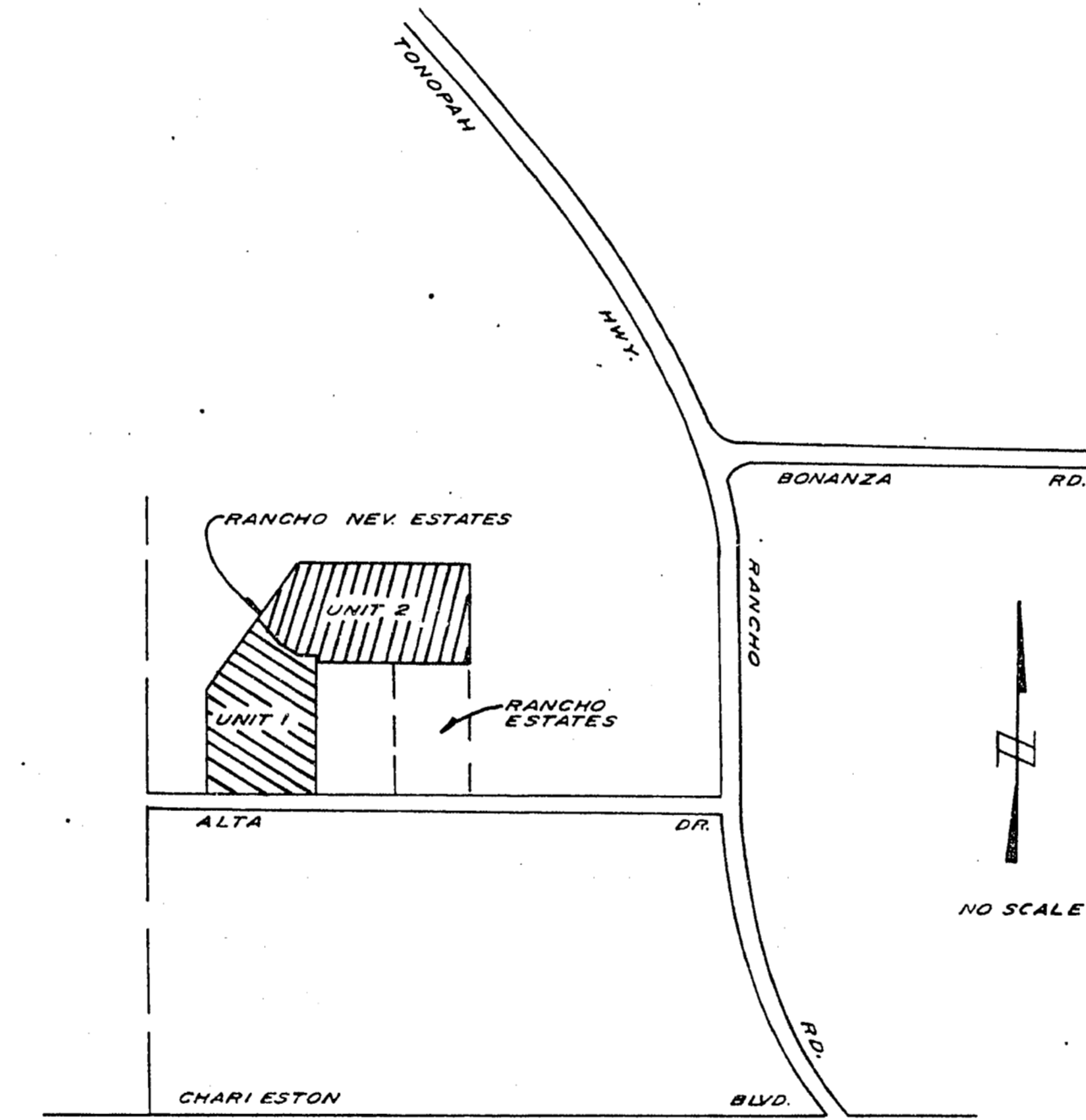
APPROVALS

THIS MAP IN CONFORMITY WITH THE TENTATIVE MAP, APPROVED THIS 24th DAY OF November, 1965, BY THE CITY PLANNING COMMISSION OF THE CITY OF LAS VEGAS, COUNTY OF CLARK, STATE OF NEVADA.

BY Don J. Saylor
DON J. SAYLOR SECRETARY

APPROVED AND ACCEPTED THIS 15th DAY OF December, 1965, BY THE BOARD OF COMMISSIONERS OF THE CITY OF LAS VEGAS, COUNTY OF CLARK, STATE OF NEVADA.

ATTEST
EDWINA M. COLE
CITY CLERK
ORAN K. GRAGSON
MAYOR



LOCATION MAP

LEGEND

- 3' UTILITY EASE.
- 6' UTILITY EASE.
- 15' SETBACK
- 50' SETBACK
- 17 LOT NUMBER
- 4 BLOCK NUMBER
- ⊙ SET MONUMENT
- ⊙ FOUND MONUMENT
- ⊙ CURVE DATA NUMBER
- ANCHOR EASEMENT

No. 554250
Recorded at the request of
Royal Crest, Inc.
Date 2-23-66 at 2:39 P.M.
Book 16 Page 77
of Plats
Official Records Book No. 696
Clark County Nevada Records
PAUL E. HORN, RECORDER
Fee \$18.00 M.S. Deputy E.