

# WILDWOOD UNIT No. 2B

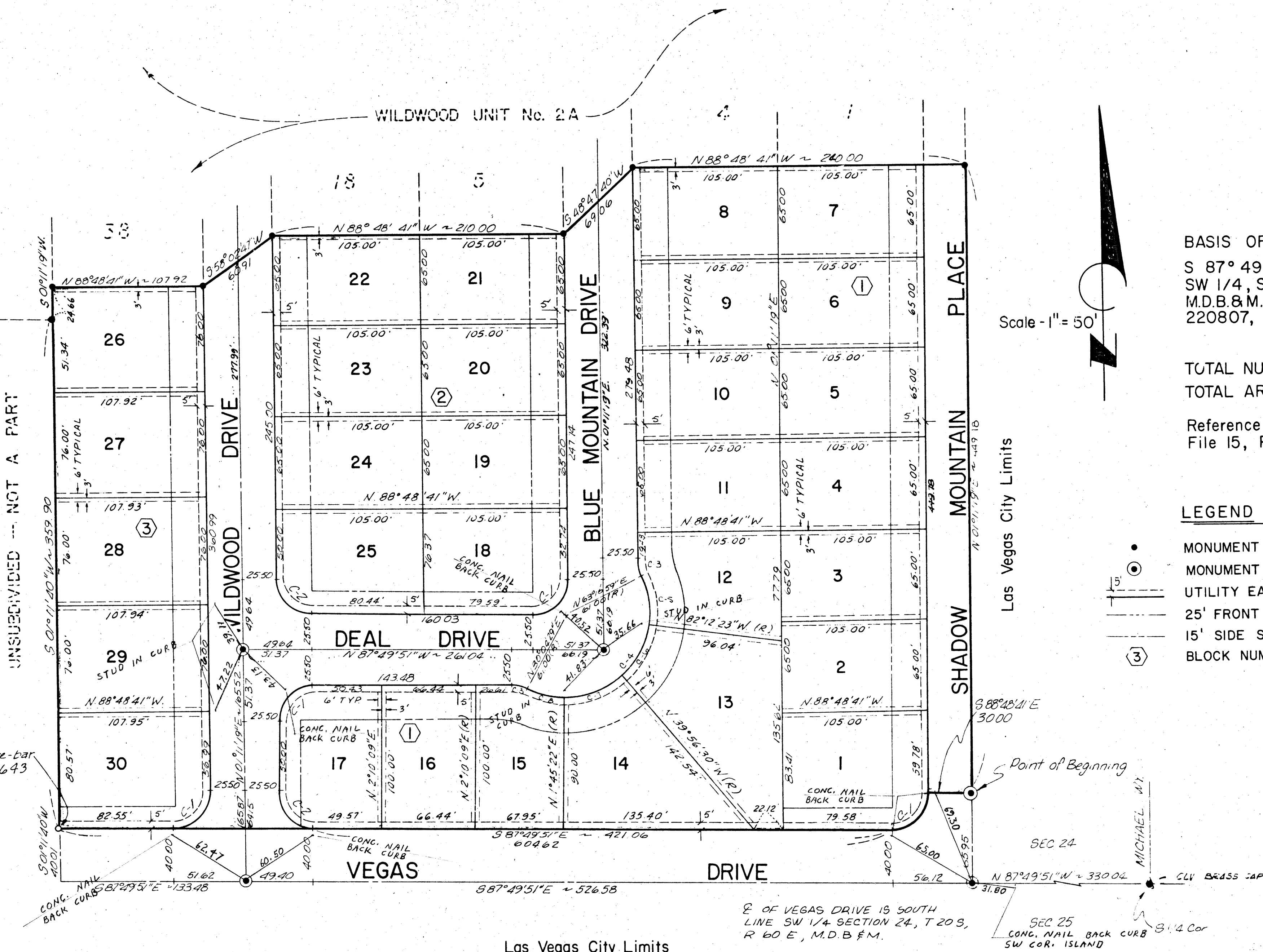
BEING A PORTION OF THE SW 1/4 OF SECTION 24, T.20 S., R.60 E., M.D.B.&M., COUNTY OF CLARK, STATE OF NEVADA

CURVE DATA TABLE				
NO.	DELTA	RADIUS	LENGTH	LONG.CHD.
C-1	90°58'50"	2500	39.70	25.43
C-2	89°01'10"	2500	38.84	24.58
C-3	27°54'20"	2500	12.18	6.21
C-4	146°17'30"	61.00	156.28	204.57
C-5	34°30'38"	61.00	36.74	19.95
C-6	42°5'53"	61.00	45.00	23.58
C-7	41°41'52"	61.00	44.40	23.23
C-8	28°19'07"	61.00	30.15	15.39

### NOTES:

- No vehicular access to Vegas Drive from lots 1, 13-17 and lot 30.
- Lot lines are defined as follows:  
A 5/8" re-bar at back lot corners and a nail set in the curb on the projection of the property line at that point.

Set 5/8" re-bar R.L.S. 1643



### BASIS OF BEARINGS

S 87°49'51" E ie: South Line of SW 1/4, Section 24, T.20 S., R.60 E., M.D.B.&M., as per record of survey No. 220807, Engineers File 23 Page 64.

TOTAL NUMBER OF LOTS = 30  
TOTAL AREA = 6.517 AC.

Reference survey: No. 473992  
File 15, Page 58.

### LEGEND

- MONUMENT FOUND - 5/8" REBAR
- ⊙ MONUMENT SET - CONC. WITH BRASS CTR.
- UTILITY EASEMENT & WIDTH
- 25' FRONT SETBACK
- 15' SIDE SETBACK
- ③ BLOCK NUMBER

Scale - 1" = 50'

Las Vegas City Limits

Las Vegas City Limits

E OF VEGAS DRIVE IS SOUTH LINE SW 1/4 SECTION 24, T.20 S., R.60 E., M.D.B.&M.

WILDWOOD UNIT No. 2B 272053  
CONSULTING ENGINEERS  
LAS VEGAS, NEVADA

NO. \_\_\_\_\_  
 Recorded at the request of  
**M.L. ENTERPRISES, INC.**  
 Date \_\_\_\_\_ AT \_\_\_\_\_ M.  
 Book \_\_\_\_\_ Page \_\_\_\_\_  
 Official Record Book of Plats  
 NO. \_\_\_\_\_  
 CLARK COUNTY, NEVADA, RECORDS  
 PAUL E. HORN, RECORDER  
 FEE BY \_\_\_\_\_  
 DEPUTY \_\_\_\_\_