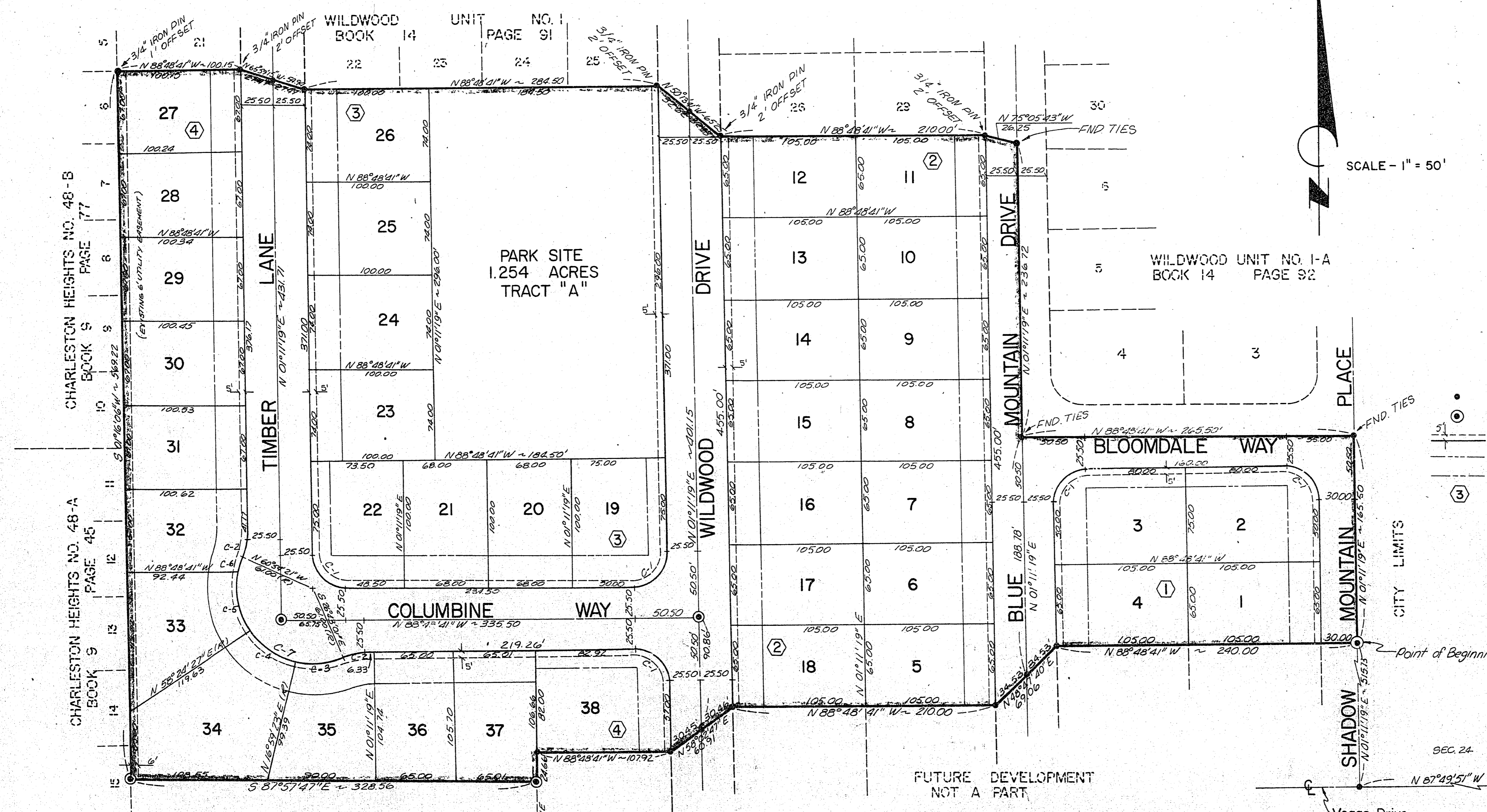


WILDWOOD UNIT No. 2A

BEING A PORTION OF THE SW 1/4 OF SECTION 24, T.20 S.,
R.60 E., M.D.B. & M., COUNTY OF CLARK, STATE OF NEVADA



BASIS OF BEARINGS:
S 87° 49' 51" E ie: South Line of
SW 1/4, Section 24, T.20 S., R.60 E.,
M.D.B. & M., as per record of survey No.
220807, Engineers File 23 Page 64

TOTAL NUMBER OF LOTS = 38
TOTAL AREA = 9.565
Reference survey: No. 473992
File 15, Page 58

LEGEND

- MONUMENT FOUND - AS NOTED
- ⊙ MONUMENT SET - CONC. WITH BRASS CTR.
- UTILITY EASEMENT & WIDTH
- 25' FRONT SETBACK
- 15' SIDE SETBACK
- ③ BLOCK NUMBER

FUTURE DEVELOPMENT
NOT A PART

CURVE DATA TABLE					
NO.	Δ	RADIUS	LENGTH	TANGENT	LONG.CHD.
C-1	90°00'00"	25.00	39.27	25.00	35.36
C-2	27°54'20"	25.00	12.18	6.21	12.06
C-3	43°36'24"	61.00	46.43	24.40	45.31
C-4	41°31'04"	61.00	44.20	23.12	43.24
C-5	46°27'08"	61.00	49.46	26.18	48.11
C-6	14°14'04"	61.00	15.15	7.62	15.12
C-7	145°48'40"	61.00	155.24	190.35	116.61

WILDWOOD UNIT No. 2A 272053
CONSULTING ENGINEERS
LAS VEGAS, NEVADA

NO.
Recorded at the request of
Date _____ AT _____ M.
Book _____ Page _____
Official Record Book of Plats
NO. _____
CLARK COUNTY, NEVADA, RECORDS
PAUL E. HORN, RECORDER
FEE BY _____
DEPUTY _____