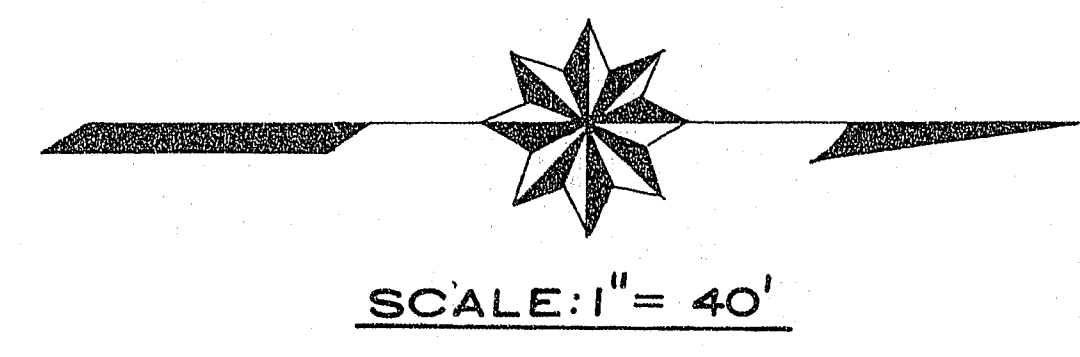
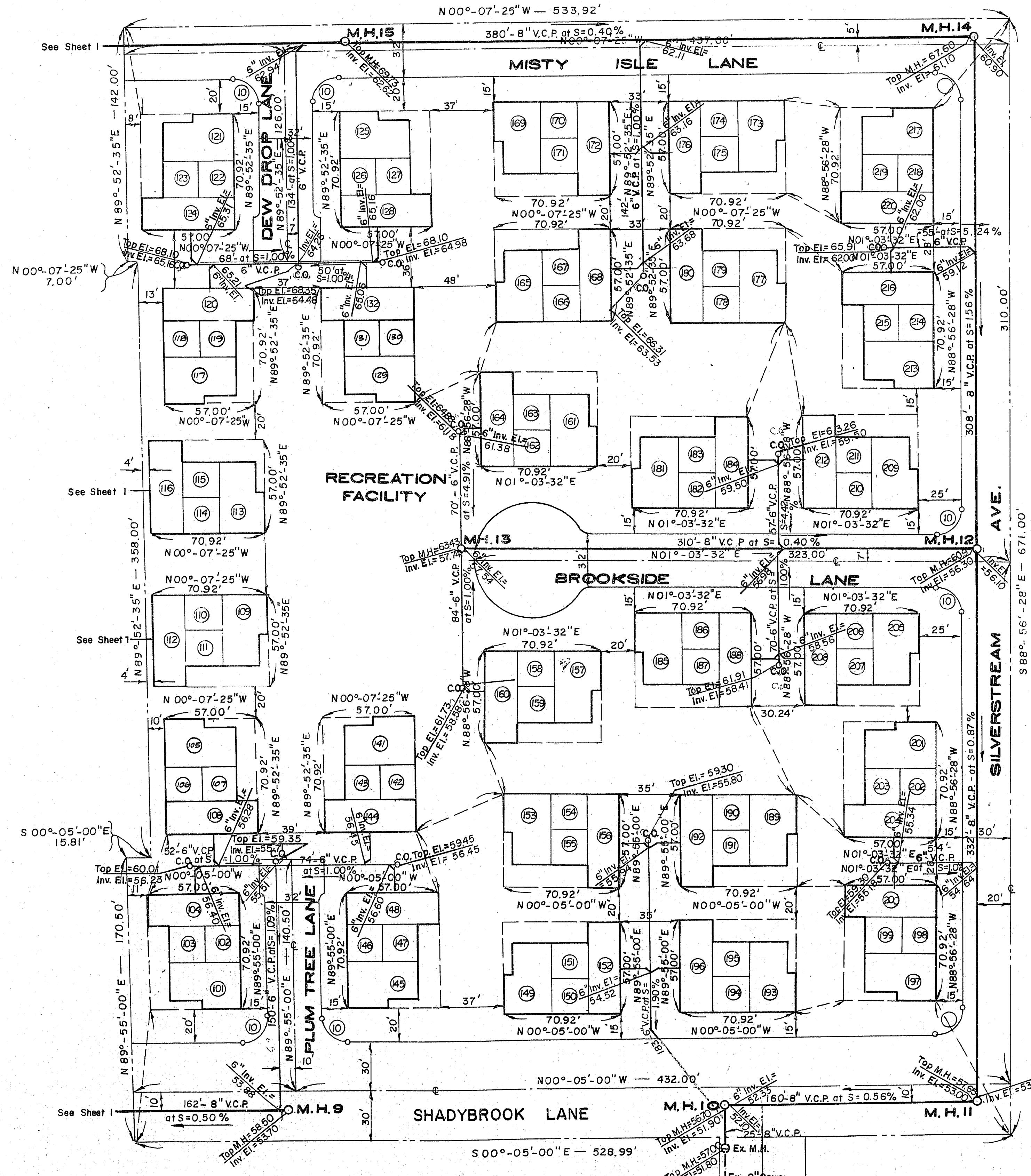


A SUBDIVISION MAP FOR CONDOMINIUM PURPOSES  
**WESTPORTER HOMES**  
 A PORTION OF THE SW1/4, SW1/4, SEC. 26, T.20S, R.60E., M.D.B.&M., CITY OF LAS VEGAS,  
 COUNTY OF CLARK, STATE OF NEVADA

NOT A PART OF THIS SUBDIVISION



NOT A PART OF THIS SUBDIVISION

Approvals:

*[Signature]* 8-23-72  
 City Engineer Date

*[Signature]* 8-16-72  
 Sanitation Engineer Date

*[Signature]* 8-15-72  
 Field Engineer Date

<b>WESTPORTER HOMES</b>	
<b>MASTER SEWER PLAN</b>	
<b>KARSTEN T. BRONKEN CONSULTING ENGINEERS</b>	
Designed: K.T.B. Drawn: K.T.B. Date:	Approved: