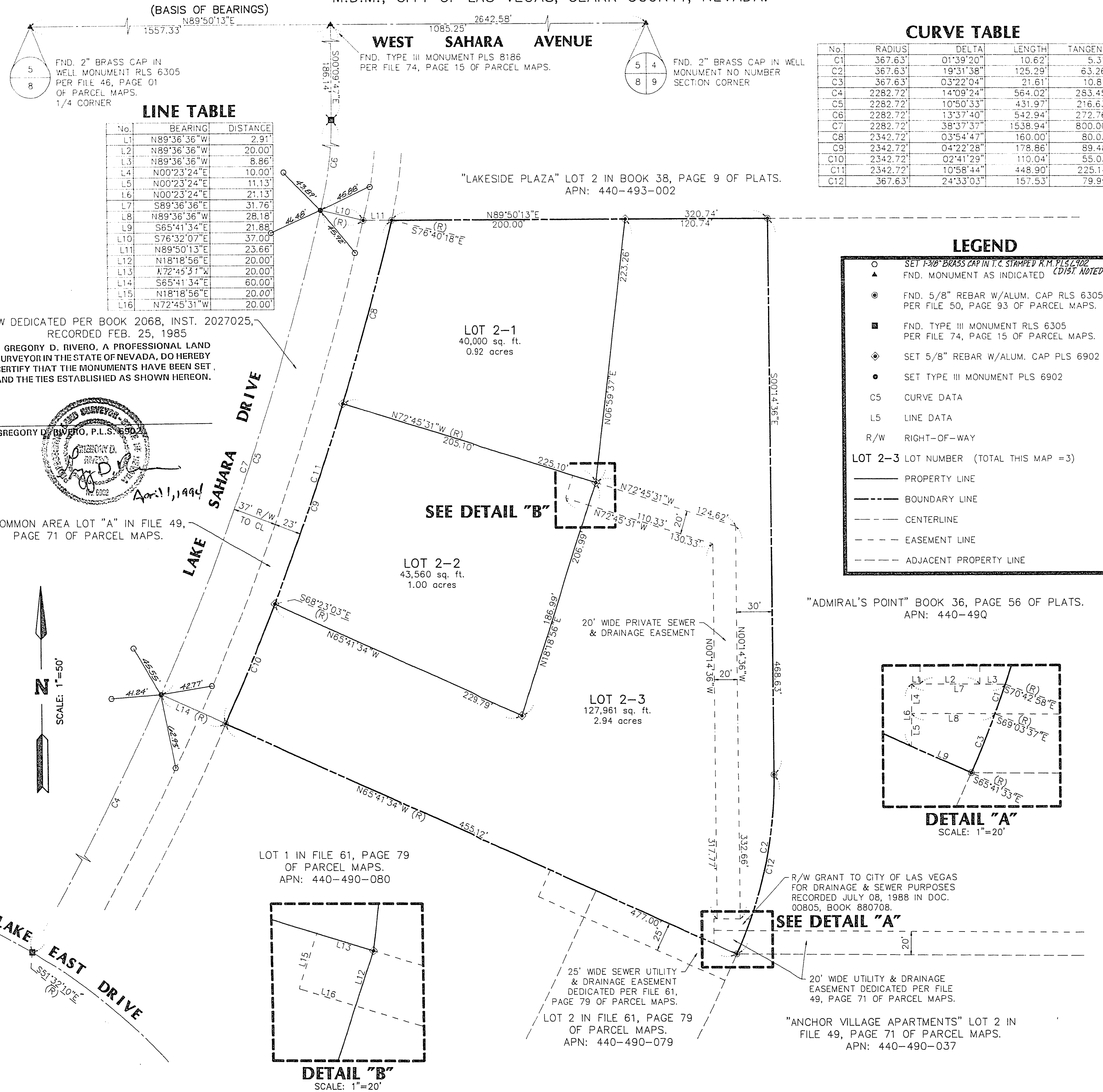


MONUMENT TIE MAP PARCEL MAP

FOR
WEST SAHARA INVESTMENTS, INC., A NEVADA CORPORATION
BEING A DIVISION OF LOT 2, AS SHOWN BY A MAP IN THE OFFICE OF THE CLARK COUNTY, NEVADA RECORDER, IN FILE 50, PAGE 93 OF PARCEL MAPS. SITUATED IN THE NORTHEAST QUARTER (NE 1/4) OF SECTION 8, TOWNSHIP 21 SOUTH, RANGE 60 EAST, M.D.M., CITY OF LAS VEGAS, CLARK COUNTY, NEVADA.



SURVEYOR'S CERTIFICATE

I, GREGORY D. RIVERO, A PROFESSIONAL LAND SURVEYOR IN THE STATE OF NEVADA, ACTING AS AN AGENT FOR ENGINEERS & SURVEYORS, INC., CERTIFY THAT:

- THIS PLAT REPRESENTS THE RESULTS OF A SURVEY CONDUCTED UNDER MY DIRECT SUPERVISION AT THE INSTANCE OF WEST SAHARA INVESTMENTS, INC., A NEVADA CORPORATION.
- THE LANDS SURVEYED LIE WITHIN THE NORTHEAST QUARTER (NE 1/4) OF SECTION 8, TOWNSHIP 21 SOUTH, RANGE 60 EAST, M.D.M., CITY OF LAS VEGAS, CLARK COUNTY, NEVADA, AND THE SURVEY WAS COMPLETED ON Dec. 10, 1993.
- THIS PLAT COMPLIES WITH THE APPLICABLE STATE STATUTES AND ANY LOCAL ORDINANCES IN EFFECT ON THE DATE THAT THE GOVERNING BODY GAVE ITS FINAL APPROVAL.
- THE MONUMENTS DEPICTED ON THE PLAT WILL BE OF THE CHARACTER SHOWN AND OCCUPY THE POSITIONS INDICATED BY _____ AND AN APPROPRIATE FINANCIAL GUARANTEE WILL BE POSTED WITH THE CITY BEFORE RECORDATION TO ASSURE THEIR INSTALLATION OF THE MONUMENTS.

GREGORY D. RIVERO, PLS 6902



OWNER'S CERTIFICATE & DEDICATION

WEST SAHARA INVESTMENTS, INC., A NEVADA CORPORATION, DOES HEREBY CERTIFY THAT BEING THE OWNER OF THE LAND SUBDIVIDED WITHIN THE BOUNDARY SHOWN HEREON, CONSENTS TO THE PREPARATION AND RECORDATION OF THIS PARCEL MAP AND HAS CAUSED THE LAND TO BE SURVEYED AND PLATTED INTO PARCELS AND PUBLIC STREETS AS SHOWN HEREON AND DOES HEREBY OFFER AND DEDICATE TO THE CITY OF LAS VEGAS, ITS SUCCESSORS AND ASSIGNS ALL PUBLIC STREETS AS SHOWN HEREON TO AND FOR THE USE OF THE PUBLIC AND PERMANENT EASEMENTS AS SHOWN HEREON FOR THE CONSTRUCTION AND MAINTENANCE OF SUBTERRANEAN PUBLIC UTILITIES AND SUCH STREET GRADING AND DRAINAGE AS REQUIRED PER N.R.S. 278.010 THROUGH 278.630.

WEST SAHARA INVESTMENTS, INC., A NEVADA CORPORATION

Russell W. Dorn 7-5-94
RUSSELL W. DORN - PRESIDENT DATE

ACKNOWLEDGEMENT

STATE OF NEVADA)
COUNTY OF CLARK)

THIS INSTRUMENT WAS ACKNOWLEDGED BEFORE ME ON January 25, 1994, BY RUSSELL W. DORN AS PRESIDENT OF WEST SAHARA INVESTMENTS, INC., A NEVADA CORPORATION.

Vicki K. Hainsworth
VICKI K. HAINSWORTH
NOTARY PUBLIC IN AND FOR SAID COUNTY AND STATE
MY COMMISSION EXPIRES 7-17-97

APPROVALS

THIS IS TO CERTIFY THAT THE DIRECTOR OF THE DEPARTMENT OF COMMUNITY PLANNING AND DEVELOPMENT, CITY OF LAS VEGAS, ON THIS DAY OF , 199 DID APPROVE FOR PURPOSES OF LAND DIVISION AND ACCEPT IN BEHALF OF THE PUBLIC THIS MAP AND ANY TERMS OF THE OFFER OF DEDICATION PER N.R.S. 278.010 THROUGH 278.630.

NORMAN R. STANDERFER - DIRECTOR

Rita M. Lumos 3/4/94
RITA M. LUMOS - CITY OF LAS VEGAS SURVEYOR
NEVADA CERTIFICATE No. 5094

BASIS OF BEARINGS

THE BASIS OF BEARINGS FOR THIS SURVEY IS THE NORTHERLY LINE OF THE NORTHEAST QUARTER (NE 1/4) OF SECTION 8, TOWNSHIP 21 SOUTH, RANGE 60 EAST, M.D.M. WHICH BEARS NORTH 89°50'13" EAST AS SHOWN BY A MAP ON FILE IN THE OFFICE OF THE CLARK COUNTY, NEVADA RECORDER IN FILE 63 ON PAGE 63 OF PARCEL MAPS.

RECORDER'S NOTE

ANY SUBSEQUENT CHANGES TO THIS MAP SHOULD BE EXAMINED AND MAY BE DETERMINED BY REFERENCE TO THE COUNTY RECORDER'S CUMULATIVE MAP INDEX.
N.R.S. 278.5695

ESI ENGINEERS AND SURVEYORS INC. PLANNERS • CONSULTING ENGINEERS • SURVEYORS 708 W. CHARLESTON BLVD. LAS VEGAS, NEVADA 89101 • (702) 799-6133		No. _____ FILED AT THE REQUEST OF: ENGINEERS & SURVEYORS, INC. DATE: _____ AT _____ M. FILE: _____ PAGE: _____ OF PARCEL MAPS OFFICIAL RECORDS BOOK No. _____ CLARK COUNTY, NEVADA RECORDS JOAN L. SWIFT, RECORDER
PARCEL MAP FOR WEST SAHARA INVESTMENTS, INC., A NEVADA CORPORATION BEING A DIVISION OF LOT 2, AS SHOWN BY A MAP IN THE OFFICE OF THE CLARK COUNTY, NEVADA RECORDER, IN FILE 50, PAGE 93 OF PARCEL MAPS. SITUATED IN THE NORTHEAST QUARTER (NE 1/4) OF SECTION 8, TOWNSHIP 21 SOUTH, RANGE 60 EAST, M.D.M., CITY OF LAS VEGAS, CLARK COUNTY, NEVADA.		
DRAWN: RNB W.O. No. B310	DESIGN: _____ H.SCALE: 1"=50'	CHECKED: GDR V.SCALE: _____ DATE: 12/10/93 SHEET 1 OF 1

W.O.#	DATE	# LOTS	BY	REVISION DESCRIPTION
445-B310	12/10/93	3	RNB	
	3-3-94		RNB	REVISION: 1.12 & 1.15

Ties for 107-V1541
L332