

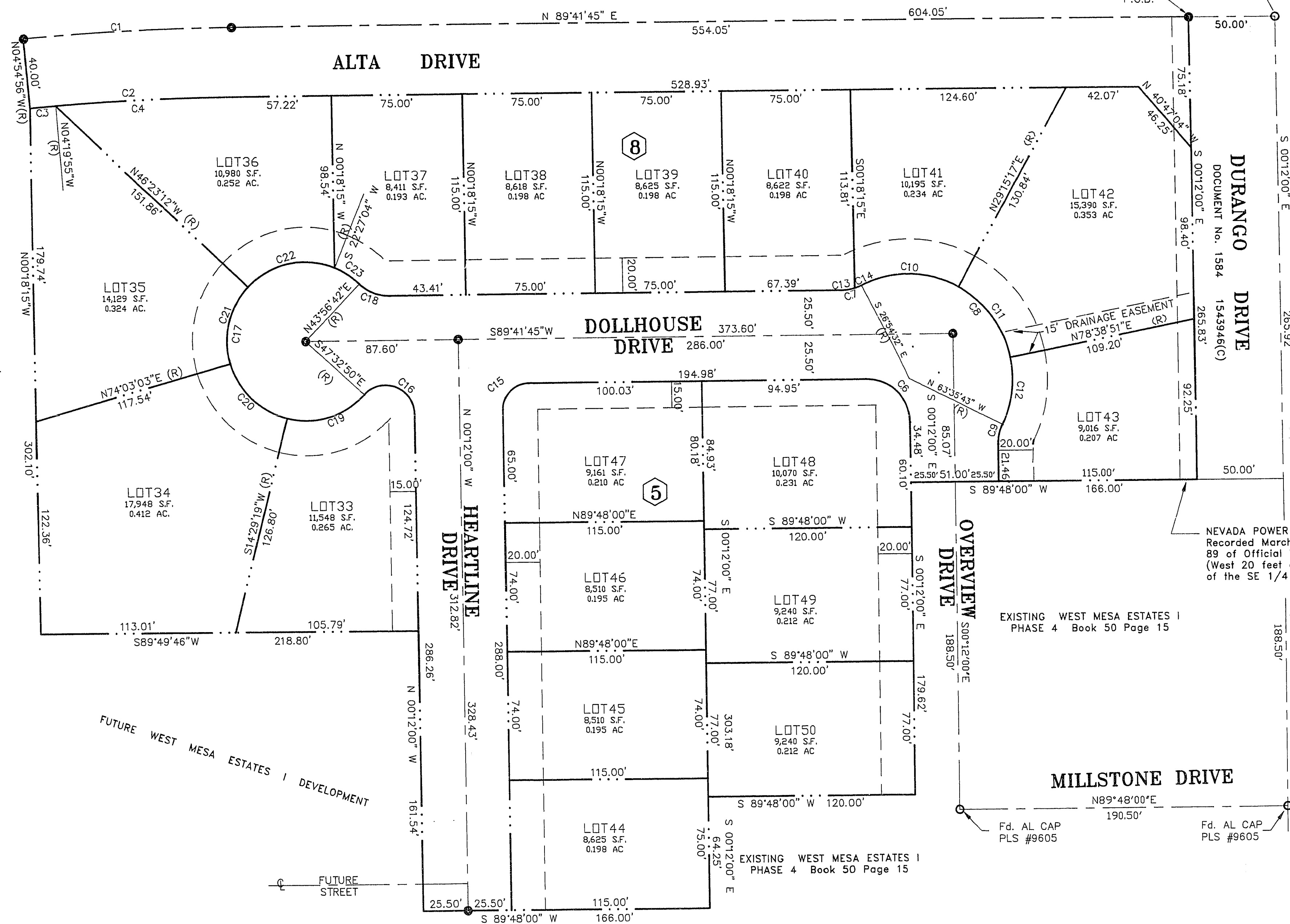
WEST MESA ESTATES I - PHASE 5

(A RESIDENTIAL SUBDIVISION)

A PORTION OF THE SOUTHEAST 1/4 OF SECTION 32, T. 20 S., R. 60 E., M.D.M. CITY OF LAS VEGAS, CLARK COUNTY, NEVADA

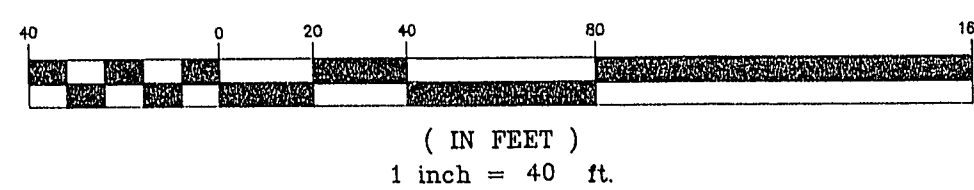
UNDEVELOPED NOT A PART OF THIS SUBDIVISION
APN 450-170-003

EAST 1/4 COR. Sec. 32
FD. BRASS CAP IN WELL
P.L.S. #5094



FUTURE WEST MESA ESTATES I DEVELOPMENT

GRAPHIC SCALE



CURVE DATA

CURVE	RADIUS	LENGTH	TANGENT	DELTA
C1	1500.00'	120.73'	60.40'	04°36'41"
C2	1460.00'	117.51'	58.78'	04°36'41"
C3	1460.00'	14.88'	7.44'	00°35'02"
C4	1460.00'	102.63'	51.34'	04°01'39"
C5	25.00'	39.32'	25.05'	90°08'13"
C6	25.00'	39.32'	25.05'	90°08'13"
C7	25.00'	11.61'	5.91'	26°36'17"
C8	80.00'	150.08'	180.97'	143°18'49"
C9	25.00'	11.61'	5.91'	26°36'17"
C10	60.00'	58.81'	32.01'	56°09'50"
C11	60.00'	51.72'	27.59'	49°23'34"
C12	60.00'	39.54'	20.52'	37°45'26"
C13	25.00'	7.73'	3.90'	17°43'32"
C14	25.00'	3.87'	1.94'	08°52'45"
C15	15.00'	23.53'	14.97'	89°53'43"
C16	16.50'	39.55'	42.26'	137°20'50"
C17	45.50'	215.60'	44.33'	271°29'32"
C18	25.00'	19.51'	10.16'	44°14'57"
C19	45.50'	49.26'	27.36'	62°02'09"
C20	45.50'	47.30'	26.04'	59°33'44"
C21	45.50'	47.30'	26.04'	59°33'44"
C22	45.50'	54.67'	31.18'	68°50'16"
C23	45.50'	17.07'	8.64'	21°29'38"

NOTE:

ANY SUBSEQUENT CHANGES TO THIS MAP SHOULD BE EXAMINED AND MAY BE DETERMINED BY REFERENCE TO THE COUNTY RECORDER'S CUMULATIVE MAP INDEX. NRS 278.5695

LEGEND

- PROPERTY LINE
- - - SETBACK LINE
- STREET CENTERLINE
- ⑤ BLOCK NUMBER
- LOT 46 LOT NUMBER
- SET REBAR & CAP
PLS #8584 (Type III Mon.)
- FD. REBAR & CAP (PLS #7309)
OR MONUMENT AS SHOWN
- NOTE FRONT CORNER ARE SAWCUT ON CURB AT EXTENSION OF PROPERTY LINE
REAR CORNERS ARE NAIL AND TAG IN WALL

TOTAL No. OF LOTS = 18 Ed.
TOTAL AREA OF PHASE 5 = 5.922 Ac. 257,941 S.F.

NOTE

DIRECT VEHICULAR ACCESS TO ALTA DRIVE AND DURANGO DRIVE FROM ABUTTING LOTS IS PROHIBITED.

CASHDAN

CIVIL ENGINEERING 844 EAST SAHARA AVENUE
LAND SURVEYING LAS VEGAS, NEVADA 89104
STRUCTURAL ENGINEERING (702) 735-7885
FORENSIC ENGINEERING FAX (702) 735-6282

FINAL MAP OF
WEST MESA ESTATES I - PHASE 5
(A RESIDENTIAL SUBDIVISION)
A PORTION OF THE SOUTHEAST QUARTER OF SEC. 32
TOWNSHIP 20 SOUTH, RANGE 60 EAST, M.D.M.
CITY OF LAS VEGAS, CLARK COUNTY, NEVADA (91848)

This set is VOID.
See new set - same number.