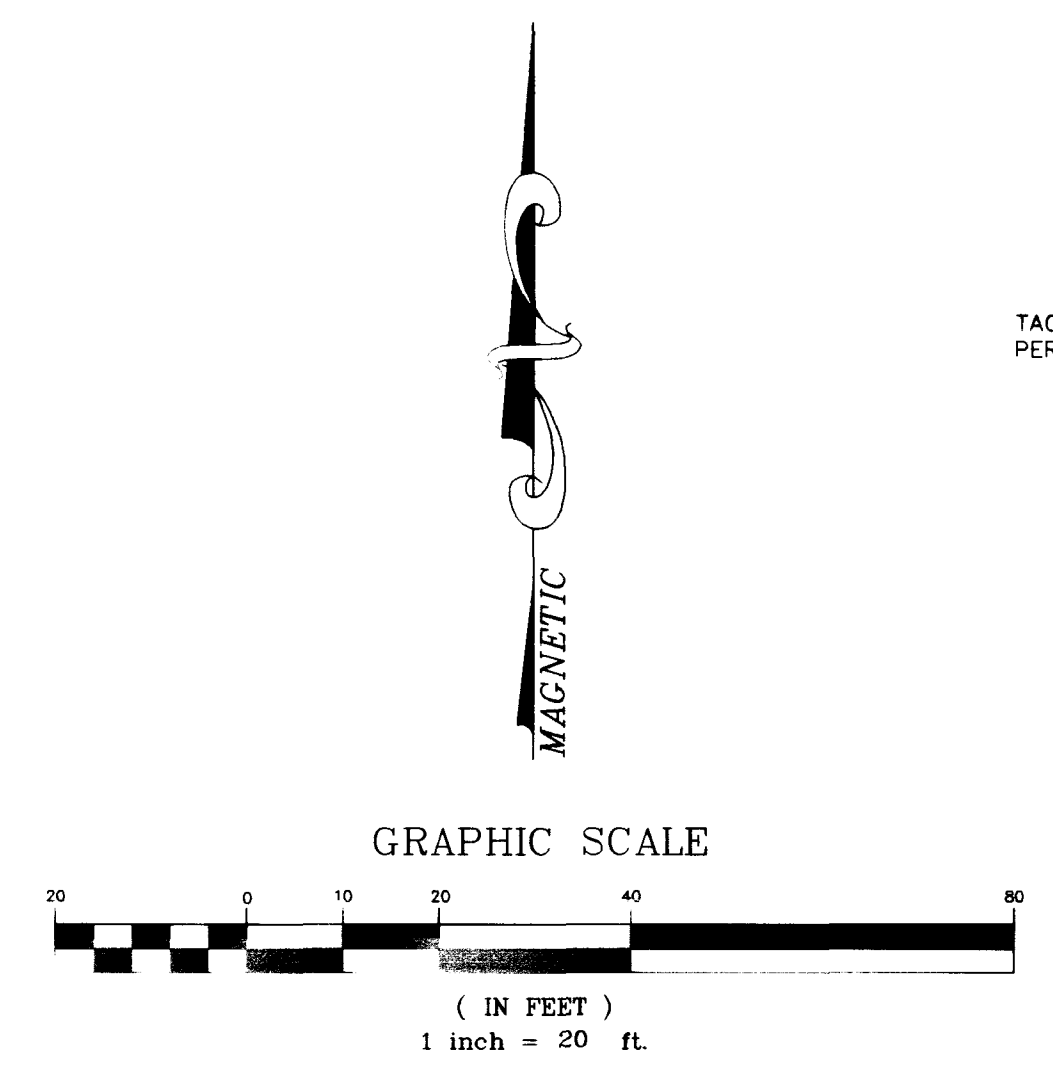


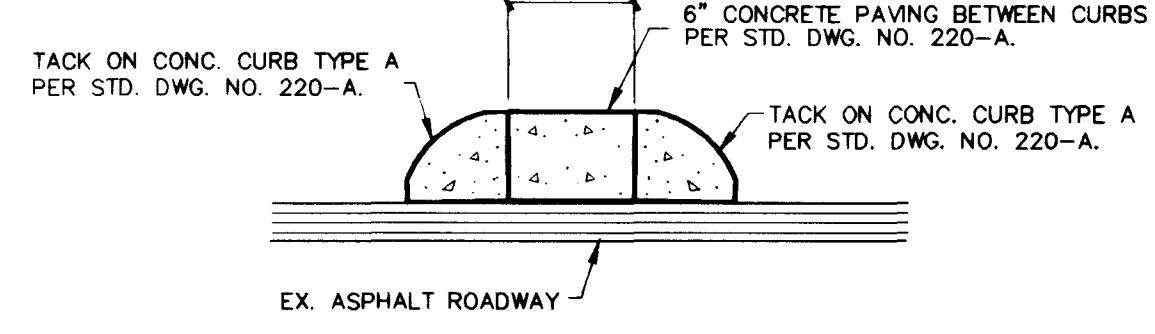
H:\CAD\LAND\5065\OFFSITE\5065-05 Sat May 17 11:38:07 1997 Plotted by: JPS

SEE SHEET 3

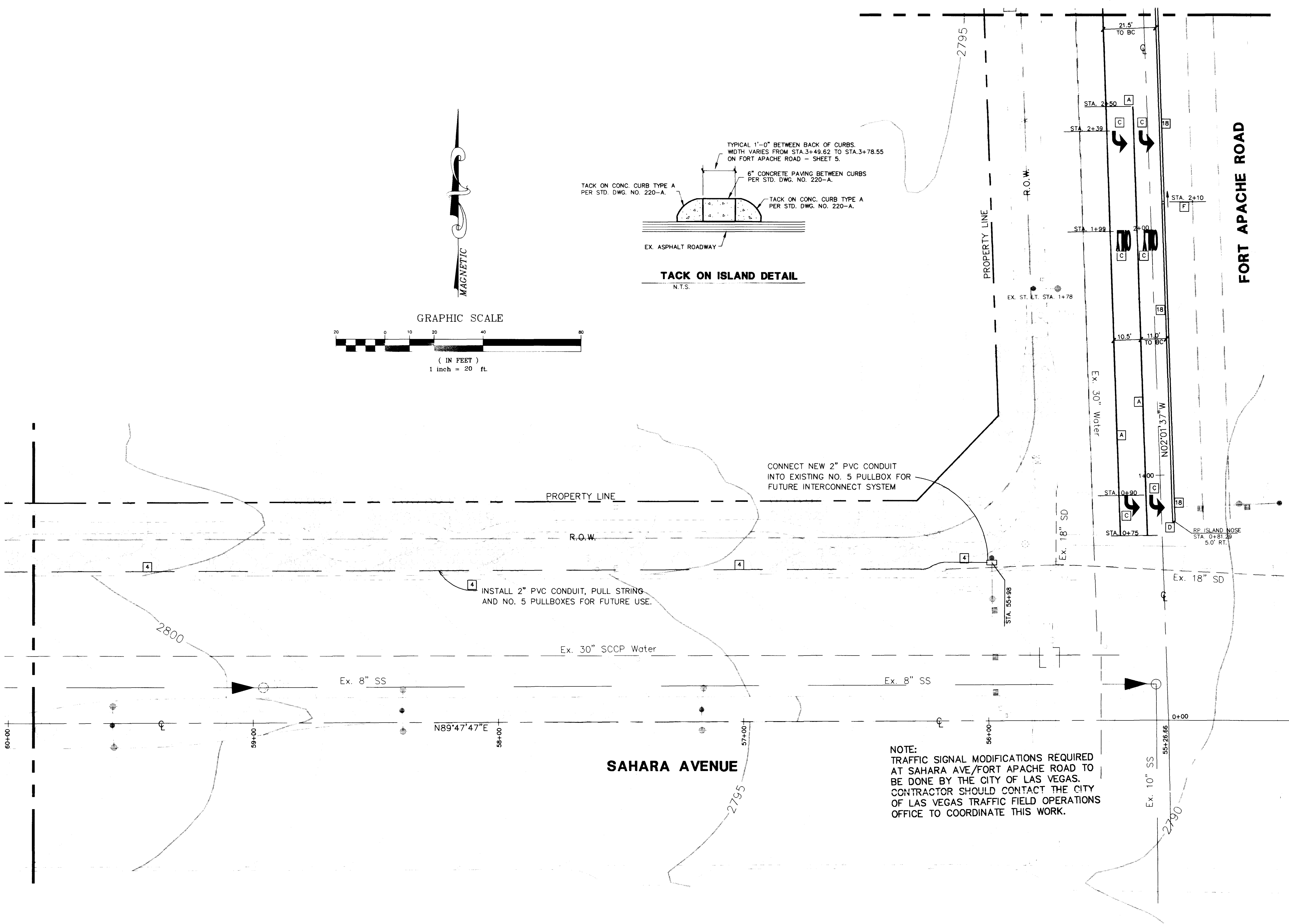
SEE SHEET 5



TYPICAL 1'-0" BETWEEN BACK OF CURBS. WIDTH VARIES FROM STA. 3+49.62 TO STA. 3+78.55 ON FORT APACHE ROAD - SHEET 5.



TACK ON ISLAND DETAIL
N.T.S.



NOTE:
TRAFFIC SIGNAL MODIFICATIONS REQUIRED AT SAHARA AVE/FORT APACHE ROAD TO BE DONE BY THE CITY OF LAS VEGAS. CONTRACTOR SHOULD CONTACT THE CITY OF LAS VEGAS TRAFFIC FIELD OPERATIONS OFFICE TO COORDINATE THIS WORK.

CONSTRUCTION ITEMS

- 1 CONSTRUCT 24" TYPE "L" CURB & GUTTER PER STD. DWG. 216.
- 2 CONSTRUCT TYPE "A" ISLAND CURB PER STD. DWG. NO. 219.
- 3 INSTALL NO. 5 PULLBOX PER STD. DWG. NO. 338.
- 4 INSTALL 2" PVC CONDUIT W/ PULL STRING FOR FUTURE TRAFFIC SIGNAL USE. LOCATE PER STD. DWG. NO. 501.
- 5 INSTALL 4" CONC. IN MEDIAN PER STD. DWG. NO. 218.
- 6 SAWCUT, REMOVE AND REPLACE EX MEDIAN CONCRETE AS NECESSARY FOR ST. LIGHT RELOCATION.
- 7 PROVIDE AND INSTALL STREET LIGHT PER STD. DWG. 309.
- 8 CONSTRUCT PUBLIC R.O.W. CURB RETURN SIDEWALKS PER STD. DWGS. 216, 234 & 235.
- 9 CONSTRUCT 8 FOOT WIDE CROSS GUTTER PER STD DWG 228.
- 10 RELOCATE STREET LIGHT PER CITY L.V. STANDARDS.
- 11 CONSTRUCT GUTTER LIP TRANSITION PER DETAIL ON SHEET 3.
- 12 CONSTRUCT CONCRETE WALK PER STD. DWG. 234. WALK SHALL BE 3.5' WIDE UNLESS SHOWN OTHERWISE ON THE PLANS.
- 13 REMOVE EXIST. CURB, GUTTER, WALK AND MISC. LANDSCAPE IMPROVEMENTS. MATCH EXIST. C&G WITH NEW CONSTRUCTION.
- 14 REMOVE AND REPLACE 5 FOOT WIDE SIDEWALK TO PROVIDE A SMOOTH TRANSITION BETWEEN NEW CURB RETURN AND EXIST. WALK (4.9% MAX. SLOPE). CONSTRUCT WALK PER STD. DWG. 234.
- 15 INSTALL R1-1 36" STOP SIGN AND PAINTED STOP LIMIT LINE PER C.L.V. STANDARDS.
- 16 CONSTRUCT CONC. TACK ON ISLAND PER STD. DWG. 220-A. SEE DETAIL ON SHEET NO. 4.
- A INSTALL WHITE STORAGE LANE LINE PER STD. DWG. 246A.
- C INSTALL ARROW & "ONLY" USING WHITE COLD POLYMER FILM.
- D INSTALL YELLOW MEDIAN NOSE MARKINGS PER STD. DWG. 248.
- F INSTALL R6-1R "ONE WAY" SIGN (36"x12").

BENCHMARK

CLV BENCHMARK #1LV-106SSE6
RIVET & PLATE IN TOP OF NORTH CURB LINE AT 5501 W. SAHARA AVENUE
ELEVATION = 860.879 METERS (NAVD 88)
= 2824.401 FEET (NAVD88)

PLAN INFORMATION

SEE SHEET 2 FOR GENERAL NOTES AND LEGEND.
SEE THE RECORDED PLAT MAPS FOR BOUNDARY CONTROL INFORMATION.

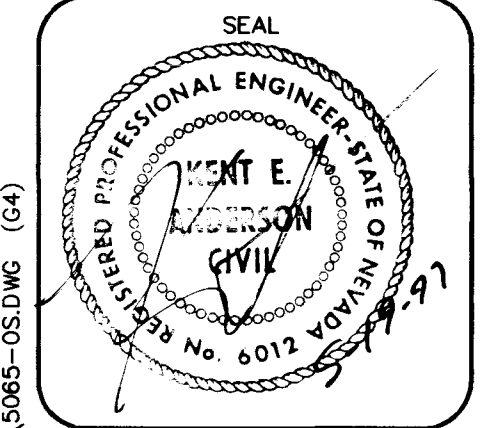
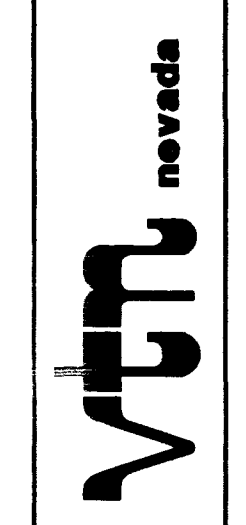
Call before you Dig
1-800-227-2600

Avoid cutting underground utility lines. It's costly.

TRIPLE FIVE DEV. GROUP CENTRAL, LTD.
P. O. BOX 371208
LAS VEGAS, NEVADA 89137
(702) 277-8654

OFFSITE STREET IMPROVEMENTS
PROJECT
WELLINGTON COMMERCIAL CENTER
AT PECCOLE RANCH

CONSULTING ENGINEERS • PLANNERS • LAND SURVEYORS
2727 SOUTH RAINBOW BOULEVARD
LAS VEGAS, NEVADA 89102-5148 PHONE (702) 873-7550 FAX (702) 362-2597



WO NO.	5065-1
BY	JPS
DATE	5/16/97
SCALE HORIZ.	20'
SCALE VERT.	N/A
SHEET	4
OF 7 SHEETS	

CERTIFICATION

I CERTIFY THIS GRADING PLAN IS IN CONFORMANCE WITH THE APPROVED DRAINAGE STUDY FOR THIS PROJECT ON FILE AT THE CITY OF LAS VEGAS, NEVADA.

