

MONUMENT TIE MAP
ALL TIE POINTS ARE LEAD BATTERIES
SET IN TOP OF CURB

7-6-39

686818

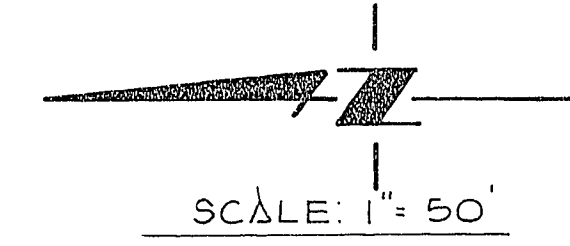
WATKINS MANOR - UNIT NO. 3

Δ PORTION OF THE NW 1/4, OF THE SW 1/4, OF SEC. 26, T20S, R60E, M.D.M.
CITY OF LAS VEGAS CLARK COUNTY, NEVADA

CURVE DATA

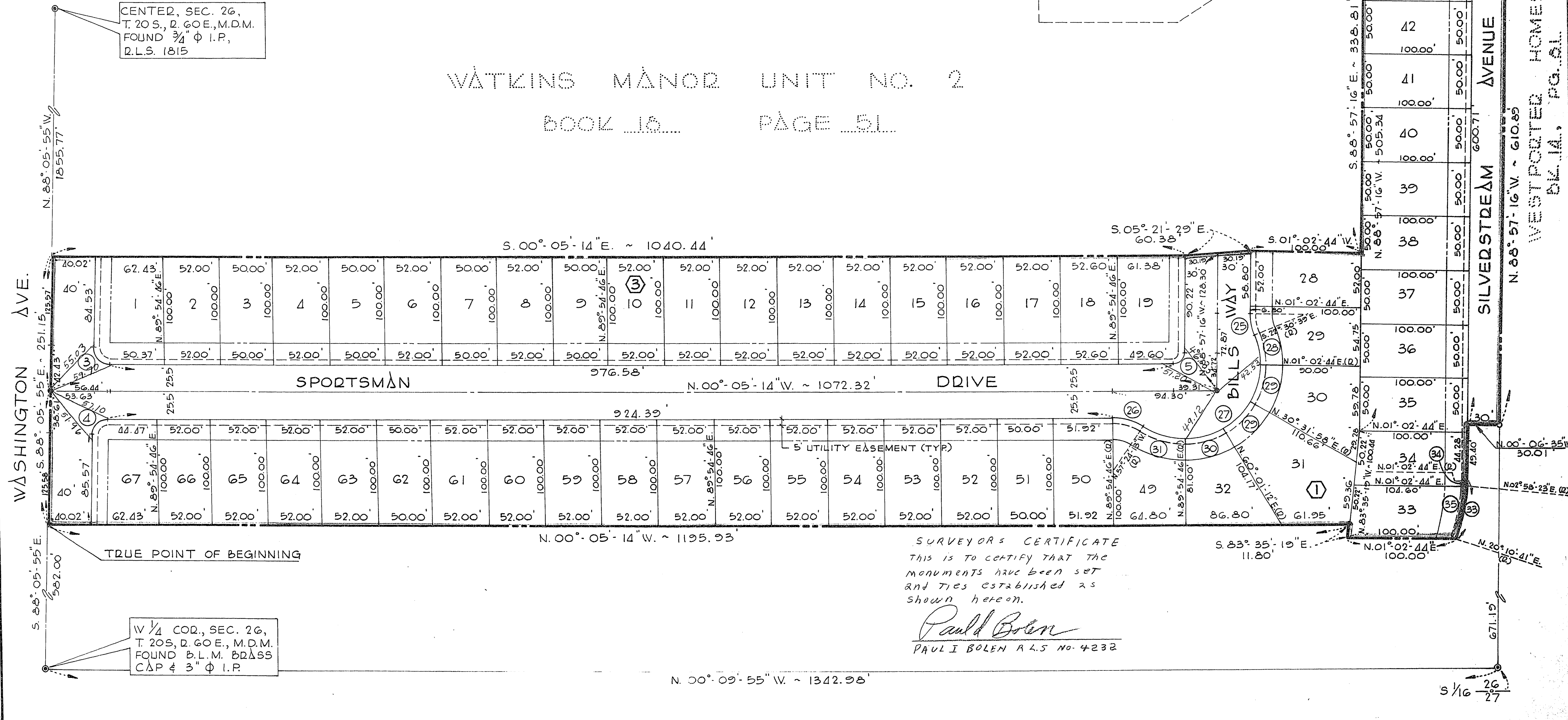
NO.	Δ	D	L	T
2	23° 33' 23"	50.00'	20.56'	10.43'
3	91° 59' 19"	15.00'	24.08'	15.53'
4	88° 00' 41"	15.00'	23.04'	14.49'
5	88° 52' 02"	10.00'	15.51'	9.80'
6	91° 07' 58"	10.00'	15.91'	10.20'
15	29° 20' 17"	70.00'	35.84'	18.32'
25	23° 33' 23"	50.00'	20.56'	10.43'
26	32° 41' 01"	50.00'	28.52'	14.66'
27	145° 06' 26"	70.00'	177.28'	222.74'
28	23° 33' 23"	70.00'	28.78'	14.60'
29	29° 29' 14"	70.00'	36.03'	18.42'
30	29° 53' 34"	70.00'	36.52'	18.69'
31	32° 41' 01"	70.00'	39.93'	20.52'
33	19° 07' 57"	170.00'	56.77'	28.68'

NO.	Δ	D	L	T
34	01° 55' 39"	170.00'	5.72'	2.86'
35	17° 12' 18"	170.00'	51.05'	25.72'



WATKINS MANOR UNIT NO. 1
BOOK 17 PAGE 88

WATKINS MANOR UNIT NO. 2
BOOK 16 PAGE 51



CENTER, SEC. 26,
T. 20S., R. 60E., M.D.M.
FOUND 3/4" φ I.P.,
D.L.S. 1815

W 1/4 COR., SEC. 26,
T. 20S., R. 60E., M.D.M.
FOUND B.L.M. B.D.A.S.
CAP & 3" φ I.P.

SURVEYOR'S CERTIFICATE
THIS IS TO CERTIFY THAT THE
MONUMENTS HAVE BEEN SET
AND TIES ESTABLISHED AS
SHOWN HEREON.

Paul I. Bolen
PAUL I. BOLEN R.L.S. NO. 4232