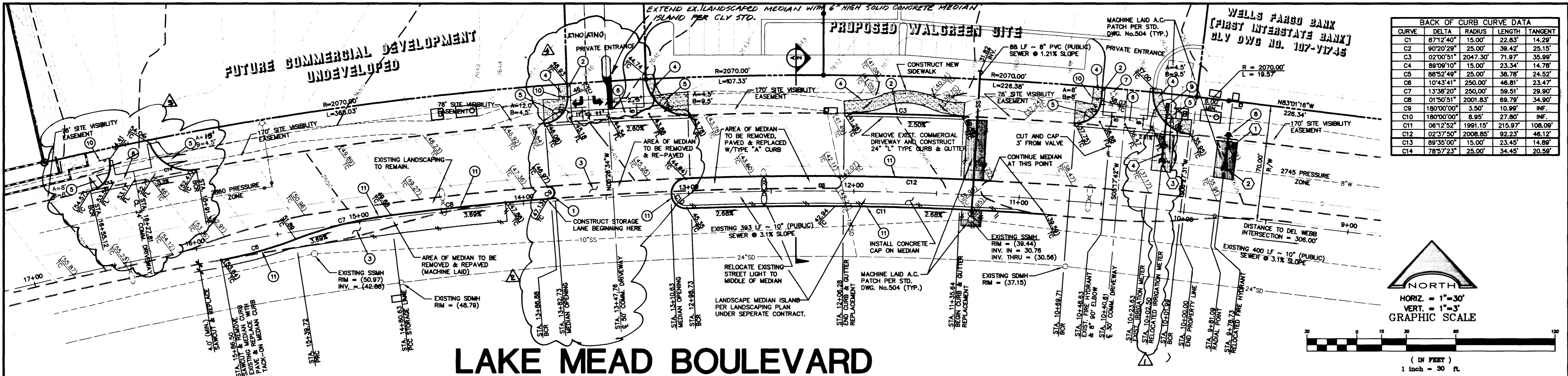
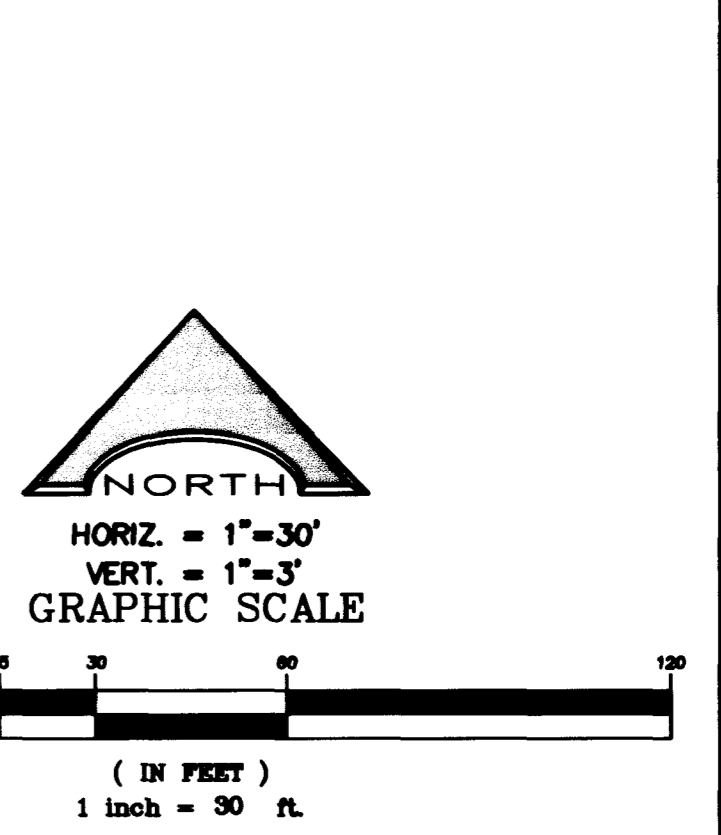


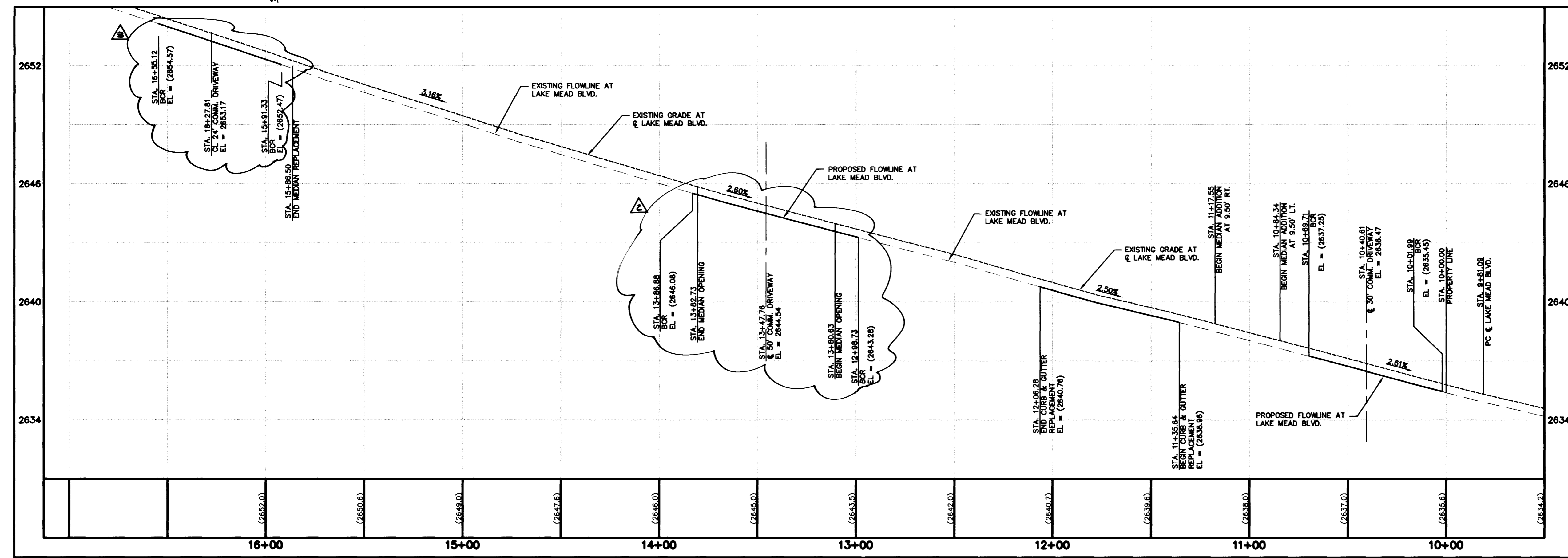
DRAWING NAME: W-PP-DWG 5-5-97 LATEST PLOT DATE



CURVE	DELTA	RADIUS	LENGTH	TANGENT
C1	87°12'40"	15.00'	22.83'	14.29'
C2	90°20'28"	25.00'	39.42'	25.15'
C3	02°00'51"	2047.30'	71.97'	35.99'
C4	89°09'10"	15.00'	23.34'	14.78'
C5	88°52'49"	25.00'	38.78'	24.52'
C6	10°43'41"	250.00'	46.81'	23.47'
C7	13°38'20"	250.00'	59.51'	29.90'
C8	01°50'51"	2001.83'	69.79'	34.90'
C9	180°00'00"	3.50'	10.99'	INF.
C10	180°00'00"	8.95'	27.80'	INF.
C11	06°12'52"	1991.15'	215.97'	108.09'
C12	02°37'50"	2008.85'	92.23'	46.12'
C13	89°35'00"	15.00'	23.45'	14.89'
C14	78°57'23"	25.00'	34.45'	20.56'



LAKE MEAD BOULEVARD



FIRE HYDRANT AND LATERAL ABANDONMENT

EXISTING LATERAL TO BE ABANDONED

WHERE SHOWN ON THE DRAWINGS, THE CONTRACTOR SHALL ABANDON THE EXISTING FIRE HYDRANT BY REMOVING BOTH THE UPPER AND LOWER BARRELS OF THE FIRE HYDRANT SO THAT NO PORTION OF THE REMAINING FIRE HYDRANT ASSEMBLY IS CLOSER THAN TWO (2) FEET TO THE EXISTING GRADE. THE EXISTING HYDRANT SHALL BE DELIVERED TO THE DISTRICT. THE EXISTING VALVE SHALL BE ABANDONED IN A CLOSED POSITION AND A MINIMUM OF THE TOP 12" OF THE VALVE BOX REMOVED. THE REMAINING PORTION OF THE VALVE BOX SHALL BE FILLED WITH CONCRETE HAVING A COMPRESSIVE STRENGTH OF AT LEAST 2,000 PSI. THE LATERAL SHALL BE CUT AND CAPPED WHERE INDICATED. WHEN A CONCRETE THROTTLE BLOCK SHALL BE INSTALLED AT ALL CUT AND CAP LOCATIONS IN ACCORDANCE WITH THE PROVISIONS OF UDACS PLATE NO. 5. THE EXISTING CONCRETE FIRE HYDRANT PAD SHALL BE REMOVED.

EXISTING SERVICES - 2" AND SMALLER ABANDONED (METER @ 8000)

THE CONTRACTOR SHALL NOTIFY THE INSPECTION DIVISION AT THE LVWD (702-258-3227) 48 HOURS PRIOR TO THE REQUESTED REMOVAL TIME TO ALLOW THE DISTRICT TO TAKE THE FINAL METER READING OF THE METER. AFTER THE FINAL READING, THE CONTRACTOR MAY THEN BEGIN REMOVAL PROCEDURES FOR THE AFFECTED SERVICE AS FOLLOWS:

EXISTING SERVICES LATERALS THAT ARE TO BE ABANDONED FROM THE EXISTING WATER MAIN, SHALL HAVE THE CORPORATION STOP TURNED OFF AT THE MAIN. THE LATERAL CUT 6" DOWNSTREAM FROM THE CORPORATION STOP AND CUT AGAIN 6" DOWNSTREAM FROM THE FIRST CUT SUCH THAT A 6" PIECE OF THE EXISTING SERVICE LATERAL IS REMOVED. IF THE CORPORATION STOP IS DAMAGED BEYOND REPAIR OR PULLED FROM THE EXISTING WATER MAIN, THE MAIN SHALL BE REPAIRED AT THE CONTRACTOR'S EXPENSE, IN A MANNER APPROVED BY THE LVWD. IF THE CORPORATION STOP IS NOT WATER TIGHT, THE CONTRACTOR SHALL NOTIFY LVWD COMMUNICATIONS SUPPORT CENTER (702-258-7171) FOR FURTHER DIRECTION. THE CONTRACTOR SHALL REMOVE THE EXISTING SERVICE METER BOX AND APPURTENANCES. FILL AND GRADE ANY AND ALL RESULTING HOLES AND REPLACE OR RESTORE TO ORIGINAL CONDITIONS OR BETTER, ALL LANDSCAPING, IRRIGATION SYSTEMS, CONCRETE, SIDEWALKS, ASPHALT, OR ANY OTHER ITEMS DAMAGED OR REMOVED DURING THE REMOVAL OF THE EXISTING SERVICE METER BOX.

INSTALLATION OF FIRE HYDRANT

FIRE HYDRANT(S) TO BE INSTALLED IN ACCORDANCE WITH THE UDACS STANDARDS AND PLATE NO. 7.

CONSTRUCTION NOTES

- CONSTRUCT "A" TYPE MEDIAN CURB PER DETAIL THIS SHEET.
- CONSTRUCT "L" TYPE CURB & GUTTER PER STD. DWG. NO. 216.
- CONSTRUCT 5" A.C. PAVEMENT PER DETAIL THIS SHEET.
- CONSTRUCT CONCRETE SIDEWALK AREAS PER STD. DWG. NO. 234.
- CONSTRUCT HANDICAP RAMP PER STD. DWG. NO. 235, CASE I, A & B AS NOTED.
- CONSTRUCT 8" WIDE VALLEY GUTTER PER STD. DWG. NO. 228.
- ABANDON EXISTING FIRE HYDRANT AS SHOWN.
- INSTALL FIRE HYDRANT ASSEMBLY AS SHOWN.
- RELOCATE 1 1/2" RPPA (METER #105016).
- INSTALL STOP SIGN - R1-1.
- CONSTRUCT TACK-ON MEDIAN WHERE PAVEMENT EXISTS, SEE DETAIL THIS SHEET.

ESTIMATE OF QUANTITIES

- 6" PVC WATER SERVICE 52 LF
- RELOCATED FIRE HYDRANT ASSEMBLY (INCL. 6" GATE VALVE, 8"x6" TEE) 2 EA.
- 1 1/2" MET TAP 1 EA.
- 1 1/2" SERVICE LAT. 30 LF.

LEGEND AND ABBREVIATIONS

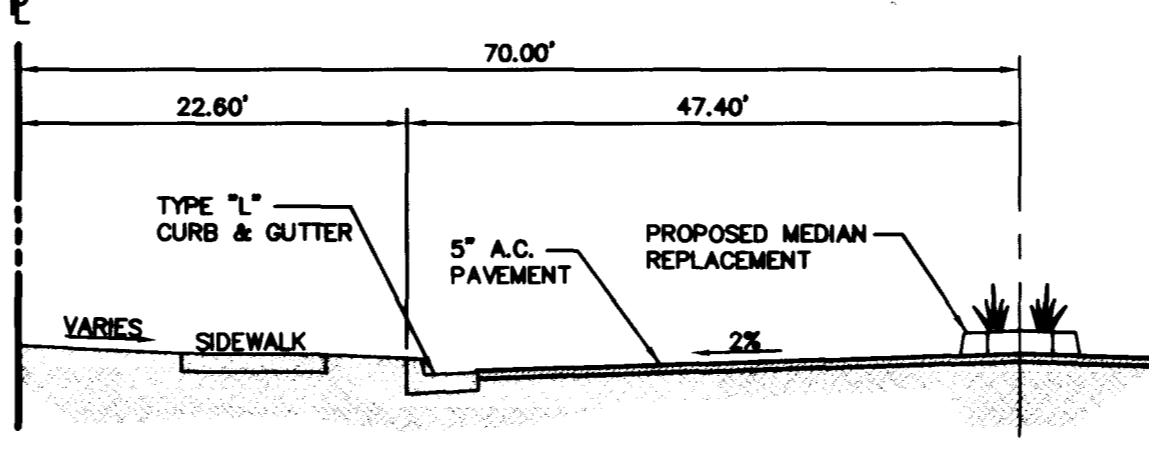
- XXXX PROPOSED ELEVATION
- XXXX EXISTING ELEVATION
- XXXX EXISTING CONTOUR
- XXXX PROPOSED CONTOUR
- BLOCK WALL
- AC ASPHALT CONCRETE
- TC TOP OF CURB
- EL ELEVATION
- FL FLOW LINE
- FF FINISH FLOOR
- LIMITS OF SAWCUT

NOTE
LAS VEGAS VALLEY WATER DISTRICT NOTES ARE LOCATED ON THE COVER SHEET OF THIS PACKAGE.

REDUCED PRESSURE PRINCIPLE ASSEMBLY - (1) 1 1/2"

APPROVED REDUCED PRESSURE ASSEMBLY(S) SHALL BE INSTALLED PER THE UDACS PLATE NO. 11A. NO WATER SHALL BE TAKEN FROM A SERVICE REQUIRING BACKFLOW PREVENTION UNTIL THE REDUCED PRESSURE PRINCIPLE ASSEMBLY HAS BEEN SUCCESSFULLY TESTED BY THE L.V.V.W.D.

ANY BLOCK WALL OR OTHER FENCE MATERIAL SHALL BE DESIGNED AND CONSTRUCTED AROUND THE OUTSIDE OF THE EASEMENT(S), TO ALLOW THE DISTRICT DIRECT ACCESS FROM THE ADJACENT RIGHT-OF-WAY.



TYPICAL LAKE MEAD SECTION

NOT TO SCALE

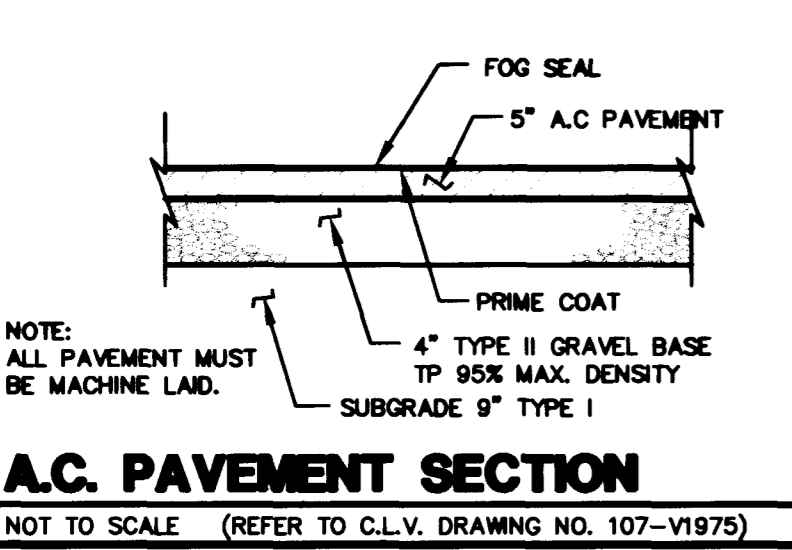
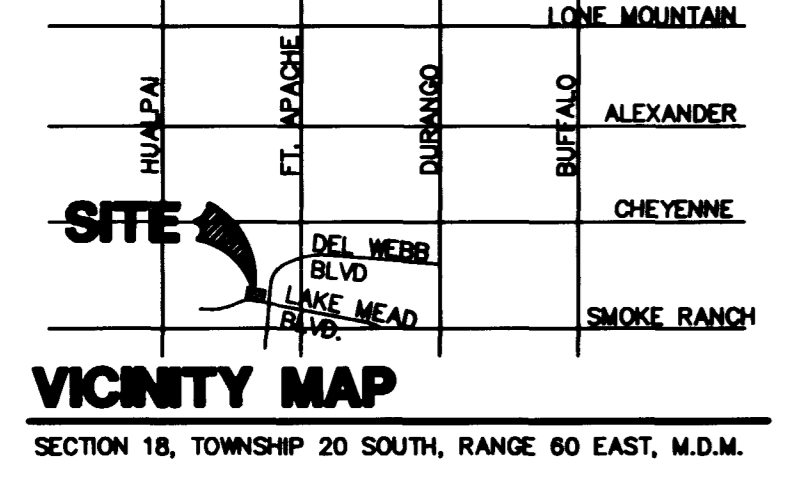
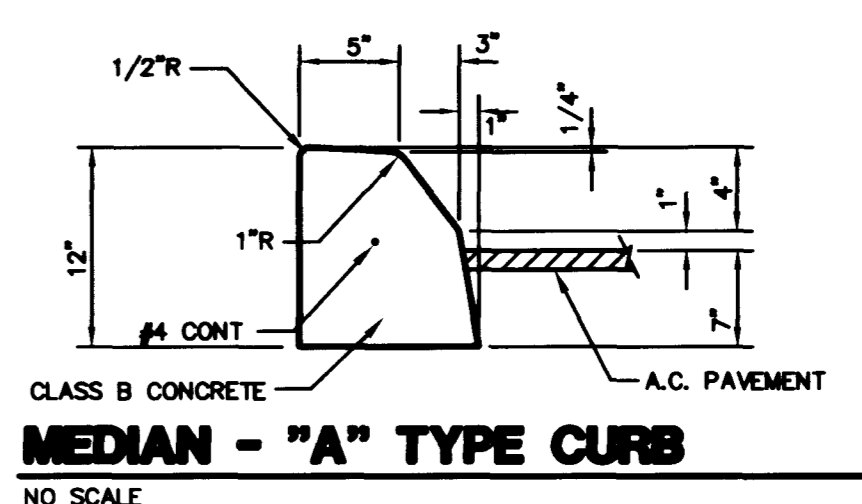
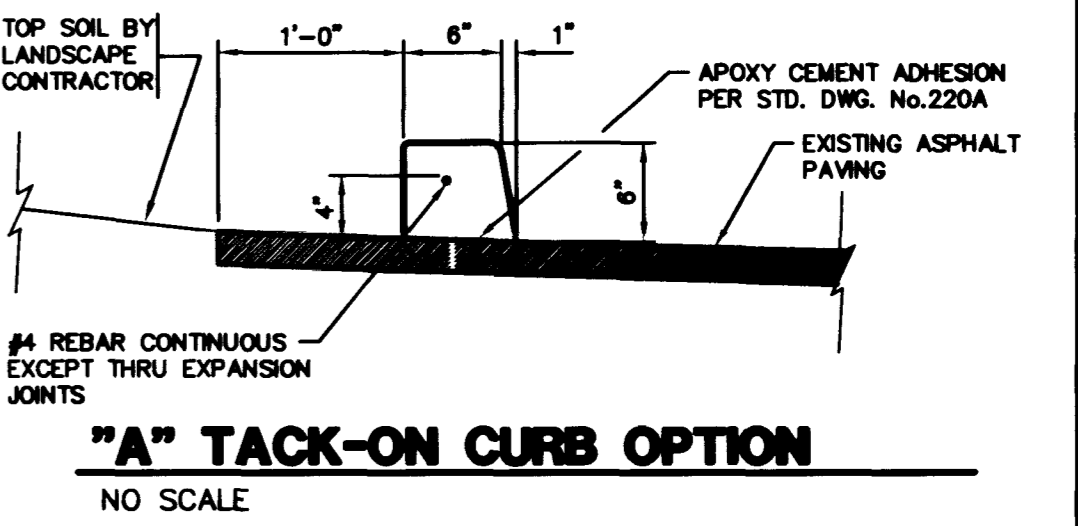
DISCLAIMER NOTE

UTILITY LOCATIONS SHOWN HEREON ARE APPROXIMATE ONLY. IT SHALL BE THE CONTRACTOR'S RESPONSIBILITY TO DETERMINE THE EXACT HORIZONTAL AND VERTICAL LOCATION OF ALL EXISTING UNDERGROUND UTILITIES PRIOR TO COMMENCING CONSTRUCTION. NO REPRESENTATION IS MADE THAT ALL EXISTING UTILITIES ARE SHOWN HEREON. THE ENGINEER ASSUMES NO RESPONSIBILITY FOR UTILITIES NOT SHOWN OR UTILITIES NOT SHOWN IN THEIR PROPER LOCATION.

APPROVALS

1st copy 5/06/97
LAS VEGAS VALLEY WATER DISTRICT DATE 4/11/98
G.V. Fire Department DATE 6/5/97

APPROVAL OF THESE PLANS SHALL NOT BE CONSTRUED TO BE A PERMIT FOR, OR AN APPROVAL OF ANY VIOLATION OF ANY OF THE PROVISIONS OF THE STATE OR COUNTY LAWS. FIRE FLOW N/A



DESIGNED BY: GZR
JOB NUMBER: 161-014-963
DRAWN BY: SWM
DATE: 1-22-97
REV. NET TAP LOCATION.
REV. MEDIAN LOCATION.
REV. DRIVEWAY LOCATION.
ADDED MEDIAN ISLAND PER L.V.W.D. 1-22-97

1-9-98

L. R. NELSON CONSULTING ENGINEERS, INC.
3035 East Patrick Lane Suite 9
Las Vegas, Nevada 89120
(702) 798-7978
(702) 451-2286 FAX

STREET PLAN & PROFILE
LAKE MEAD BOULEVARD
WALGREENS
LAKE MEAD & DEL WEBB
CAP II PETERSON PROPERTIES
CITY OF LAS VEGAS

SHEET NUMBER
2
OF 2 SHEETS
161-014-963
107-VZ680

Revised

