

**CONSTRUCTION NOTES:**

- ① INSTALL AC PAVEMENT PER STD. DWG. NO. 203
- ② INSTALL 8" CROSS GUTTER PER STD. DWG. NO. 228
- ③ INSTALL TACK ON CURB PER STD. DWG. NO. 220A
- ④ INSTALL 4" CONCRETE SIDEWALK PER STD. DWG. NO. 234
- ⑤ INSTALL "L" TYPE CURB & GUTTER PER STD. DWG. NO. 216
- ⑥ INSTALL SIDEWALK RAMP PER STD. DWG. NO. 235
- ⑦ INSTALL UNDER SIDEWALK DRAIN PER STD. DWG. NO. 236
- ⑧ INSTALL STOP SIGN R1-1

**QUANTITIES**

- 1,302 SY
- 580 SF
- LF
- 1,257 SF
- 197 LF
- 2 EA
- 1 EA

**CONSTRUCTION NOTES:**

- ⑨ INSTALL NO LEFT TURN SIGN R3-2
- ⑩ INSTALL CHEVRONS W1-B(L) EVERY 50'
- ⑪ INSTALL LANE REDUCTION SIGN L4-2(R)

100 METER P.O.  
 1. 1" = 100'  
 2. 1" = 100'  
 3. 1" = 100'  
 4. 1" = 100'  
 5. 1" = 100'  
 6. 1" = 100'  
 7. 1" = 100'  
 8. 1" = 100'  
 9. 1" = 100'  
 10. 1" = 100'  
 11. 1" = 100'  
 12. 1" = 100'  
 13. 1" = 100'  
 14. 1" = 100'  
 15. 1" = 100'  
 16. 1" = 100'  
 17. 1" = 100'  
 18. 1" = 100'  
 19. 1" = 100'  
 20. 1" = 100'  
 21. 1" = 100'  
 22. 1" = 100'  
 23. 1" = 100'  
 24. 1" = 100'  
 25. 1" = 100'  
 26. 1" = 100'  
 27. 1" = 100'  
 28. 1" = 100'  
 29. 1" = 100'  
 30. 1" = 100'  
 31. 1" = 100'  
 32. 1" = 100'  
 33. 1" = 100'  
 34. 1" = 100'  
 35. 1" = 100'  
 36. 1" = 100'  
 37. 1" = 100'  
 38. 1" = 100'  
 39. 1" = 100'  
 40. 1" = 100'  
 41. 1" = 100'  
 42. 1" = 100'  
 43. 1" = 100'  
 44. 1" = 100'  
 45. 1" = 100'  
 46. 1" = 100'  
 47. 1" = 100'  
 48. 1" = 100'  
 49. 1" = 100'  
 50. 1" = 100'  
 51. 1" = 100'  
 52. 1" = 100'  
 53. 1" = 100'  
 54. 1" = 100'  
 55. 1" = 100'  
 56. 1" = 100'  
 57. 1" = 100'  
 58. 1" = 100'  
 59. 1" = 100'  
 60. 1" = 100'  
 61. 1" = 100'  
 62. 1" = 100'  
 63. 1" = 100'  
 64. 1" = 100'  
 65. 1" = 100'  
 66. 1" = 100'  
 67. 1" = 100'  
 68. 1" = 100'  
 69. 1" = 100'  
 70. 1" = 100'  
 71. 1" = 100'  
 72. 1" = 100'  
 73. 1" = 100'  
 74. 1" = 100'  
 75. 1" = 100'  
 76. 1" = 100'  
 77. 1" = 100'  
 78. 1" = 100'  
 79. 1" = 100'  
 80. 1" = 100'  
 81. 1" = 100'  
 82. 1" = 100'  
 83. 1" = 100'  
 84. 1" = 100'  
 85. 1" = 100'  
 86. 1" = 100'  
 87. 1" = 100'  
 88. 1" = 100'  
 89. 1" = 100'  
 90. 1" = 100'  
 91. 1" = 100'  
 92. 1" = 100'  
 93. 1" = 100'  
 94. 1" = 100'  
 95. 1" = 100'  
 96. 1" = 100'  
 97. 1" = 100'  
 98. 1" = 100'  
 99. 1" = 100'  
 100. 1" = 100'

**BACK OF CURB CURVE DATA**

CURVE	DELTA	RADIUS	LENGTH	TANGENT
C1	90°51'26"	30.00'	47.57'	30.45'
C2	90°00'00"	15.00'	23.56'	15.00'
C3	90°00'00"	25.00'	39.27'	25.00'

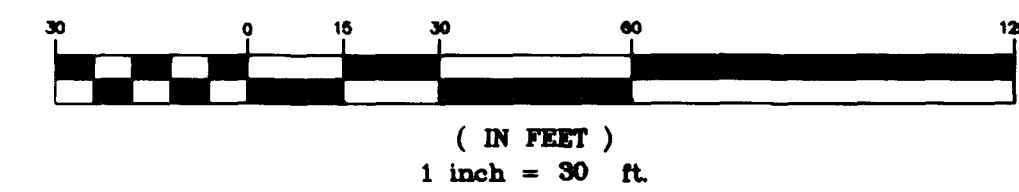
**SIDEWALK RAMP DATA**

RAMP	"A"	"B"
①	9.5'	4.5'
②	4.5'	15.0'
③	12.0'	4.5'

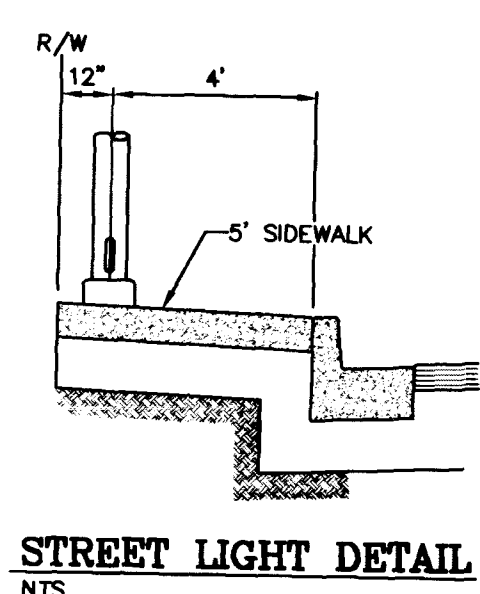
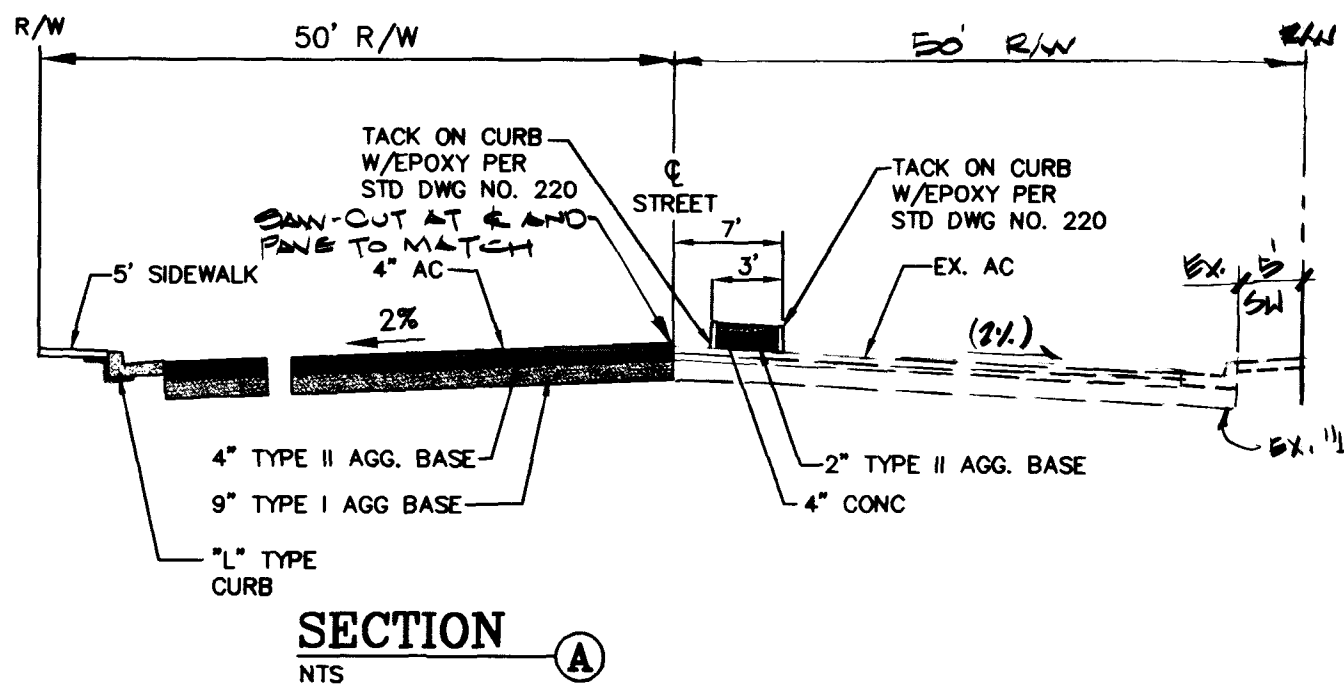
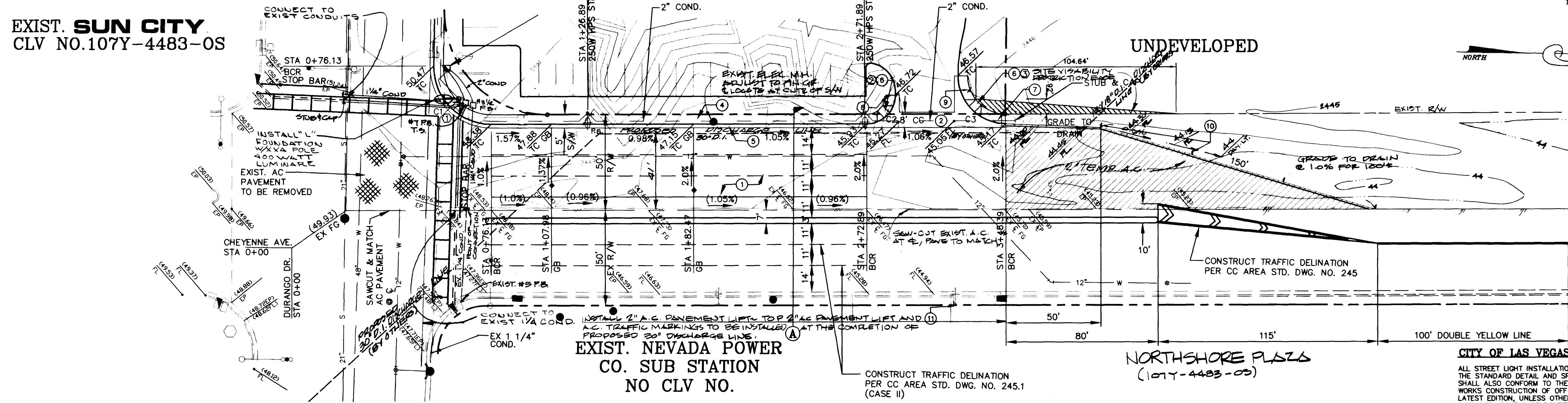
**OWNER/DEVELOPER**

CAP II PETERSON PROPERTIES  
 2325 SAN PEDRO, NE SUITE 2A  
 ALBUQUERQUE, NEW MEXICO 87110  
 PHONE (505) 884-3578

**GRAPHIC SCALE**



EXIST. SUN CITY  
 CLV NO.107Y-4483-0S



DURANGO DR.  
 (PUBLIC)

EXIST. NEVADA POWER  
 CO. SUB STATION  
 NO CLV NO.

NORTHSHORE PLAZA  
 (107Y-4483-0S)

**CITY OF LAS VEGAS STREET LIGHT NOTE**

ALL STREET LIGHT INSTALLATIONS SHALL CONFORM TO THE LATEST ISSUE OF THE STANDARD DETAIL AND SPECIFICATIONS OF THE CITY OF LAS VEGAS, AND SHALL ALSO CONFORM TO THE UNIFORM STANDARD SPECIFICATIONS FOR PUBLIC WORKS CONSTRUCTION OF OFF-SITE IMPROVEMENTS, CLARK COUNTY AREA LATEST EDITION, UNLESS OTHERWISE NOTED. ALL HAND HOLE COVERS MUST BE INSTALLED, POLE CAPS POURED AND PULL BOX LIDS BOLTED DOWN PRIOR TO ENERGIZING CIRCUIT. ALL WIRE MUST HAVE THW INSULATIONS.

**BENCHMARK**

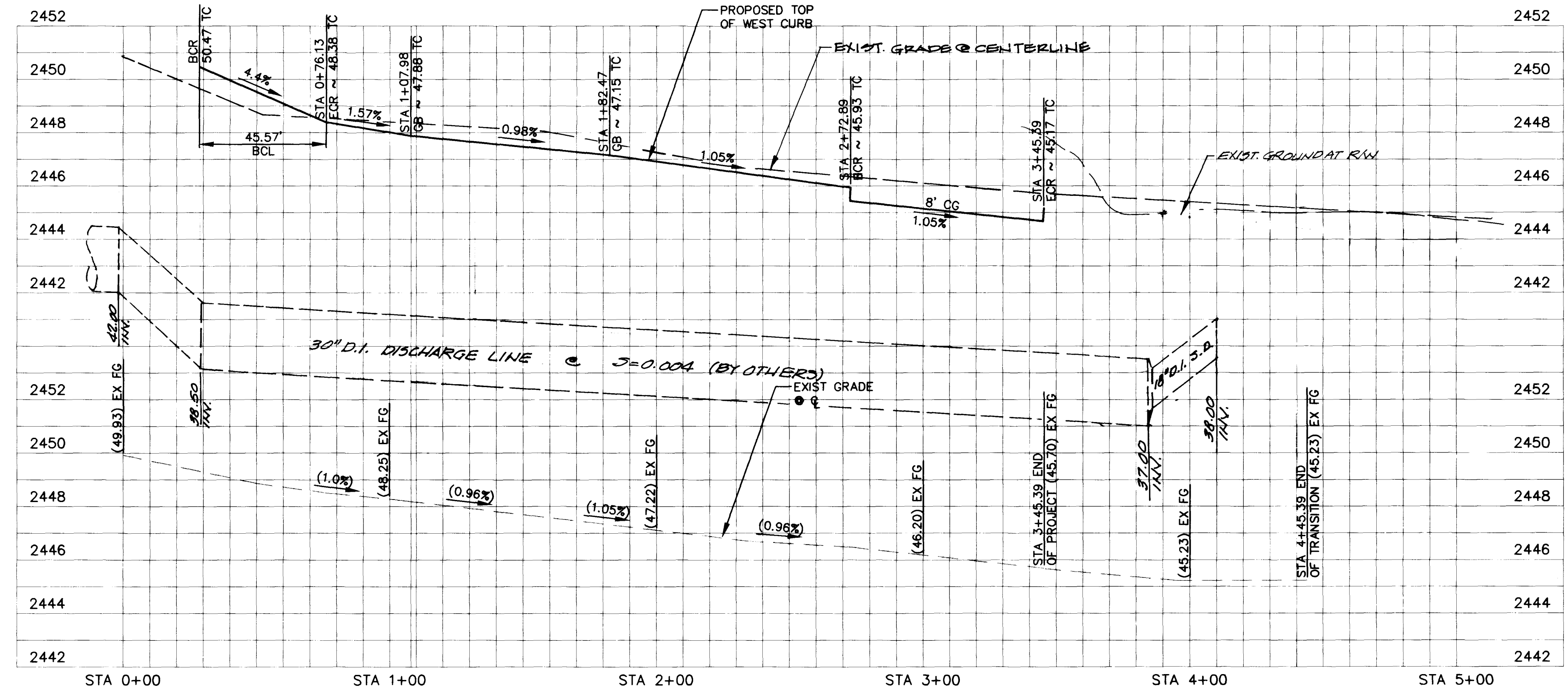
CLV BM #6, STA. 0+0017NEE6 - RIVET & PLATE IN TOP OF CURB, RAMPART AND LAZERETTE DRIVE, WEST CURB LINE.  
 ELEV = 752.4415M EQUIVALENT IN FEET 2468.64 (3.2808 FT/M) (NAVD 88).

**BASIS OF BEARING**

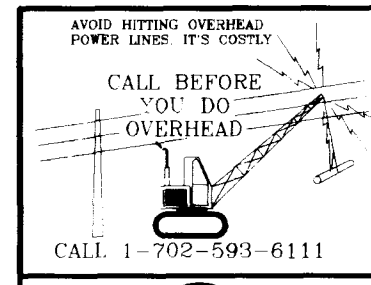
S 90°46'59" W - BEING THE SOUTH LINE OF THE SOUTHEAST QUARTER (SE 1/4) OF SECTION 8, T20S, R6E, M.D.M., AS SHOWN ON A MAP FILED IN FILE 85 OF PARCEL MAPS, PAGE 67, RECORDS OF CLARK COUNTY, NEVADA.

**LEGAL DESCRIPTION**

BEING A PORTION OF THE SOUTH HALF (S 1/2), OF THE SOUTHEAST QUARTER (SE 1/4), OF THE SOUTHEAST QUARTER (SE 1/4), OF SECTION 8, T20S, R6E, M.D.M.



PROFILE SCALE:  
 HORIZ: 1" = 30'  
 VERT: 1" = 3'



JOB NO.: 96102003  
 FILE: 61020PP2  
 DESIGNER: PS  
 DRAWN BY: PAO  
 CHECKED BY: MC  
 DATE: 11/4/96

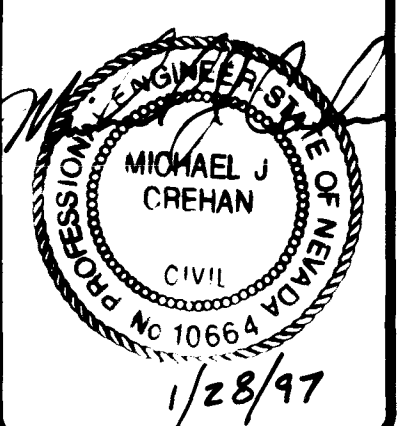
SHEET NO.  
 5 OF 6

Standage & Truitt Engineering, Ltd.

CIVIL ENGINEERING AND SURVEYING  
 6855 W. CHARLESTON BOULEVARD  
 LAS VEGAS, NEVADA 89117  
 PHONE: (702) 255-2950  
 FAX: (702) 255-3080

WALGREENS  
 CHEYENNE/DURANGO

PLAN/PROFILE DURANGO DR.  
 STORE #0445-04187



JOB NO.: 96102003  
 FILE: 61020PP2  
 DESIGNER: PS  
 DRAWN BY: PAO  
 CHECKED BY: MC  
 DATE: 11/4/96

SHEET NO.  
 5 OF 6

