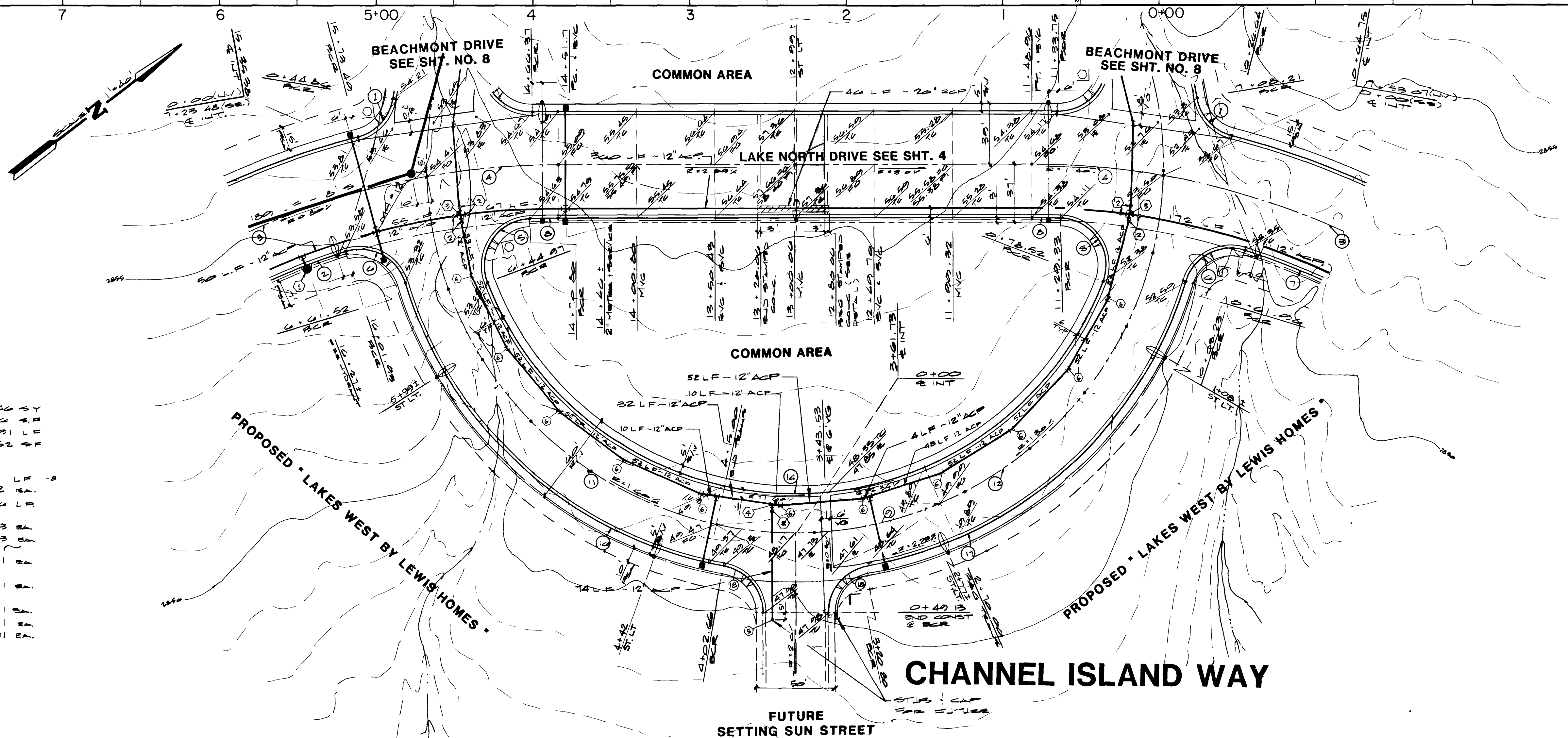


REV	DATE	BY	REVISION
1	8-28-87	GN	REMOVED 2 STREETS & REV'D QUANT. EST
2	9-28-87	PE	RELOCATED WATER METERS FROM L.V.V.D
3	8-28-87	GN	REV WATER LINE ON CHANNEL ISLAND WAY
4	9-15-87	PC	REV'D WATER LINE ON LOOP ROAD
5	10-15-87	PC	REV'D WATER LINE ON LOOP ROAD
6	10-15-87	PC	REV'D WATER LINE ON LOOP ROAD
7	11-19-87	DA	STREET LIGHTS CHANGED TO 150W
8	1-4-88	TB	REV ST LYS PER CLY
9	1-8-88	GU	REV ST LYS

ESI ENGINEERS & SURVEYORS INC.
 7018 UNIVERSITY AVENUE, SUITE 100, SAN ANTONIO, TEXAS 78249
 (512) 702-3844 FAX
 SUBMITTED BY: *W. E. Lewis*
 DATE: 10/16/87

NO	ANGLE	R	L	T
1	66° 12' 29"	30.00	34.67	19.55
2	27° 19' 49"	444.17	211.87	107.92
3	35° 18' 16"	478.7	294.64	152.16
4	10° 05' 26"	478.17	84.21	42.22
5	108° 35' 38"	30.00	56.86	41.74
6	91° 15' 37"	30.00	47.78	30.67
7	12° 22' 10"	444.17	95.89	48.13
8	02° 21' 08"	444.17	18.24	9.12
9	176° 23' 35"	235.00	723.48	---
10	40° 15' 30"	235.00	165.12	86.13
11	88° 12' 00"	235.00	861.75	287.78
12	88° 11' 50"	235.00	861.75	287.78
13	40° 24' 07"	235.00	165.71	86.47
14	138° 06' 26"	210.00	506.19	---
15	15° 52' 29"	250.00	72.04	36.25
16	63° 18' 30"	260.00	286.82	160.04
17	63° 18' 14"	260.00	286.82	160.04
18	80° 01' 11"	28.50	34.80	28.92

2" ASPHALTIC CONCRETE PAVING	2,046 SY
CONCRETE VALLEY GUTTER	140 LF
L TYPE CURB AND GUTTER	1,201 LF
CONCRETE SIDEWALK	6,952 SF
SEWER MANHOLES	
8" SEWER MAIN	679 LF
12" ACP WATER LINE	2 LF
2" METER & SERVICE	746 LF
1 1/2" PVC CONDUIT	3 EA
3/4" PULL BOX	3 EA
150 WATT H.P.S.	3 EA
LIGHT STANDARD, GREEN CONC. POLE	3 EA
STOP SIGN	1 EA
STREET NAME SIGN	1 EA
STANDARD FIRE HYDRANT ASSEMBLY	1 EA
12" GATE VALVE	1 EA
12" CROSS	1 EA
12" TEE	1 EA
2" BUSHING	11 EA
1 1/2" ELL	11 EA



TITLE: STREET & SEWER PLAN & PROFILE (CHANNEL ISLAND WAY)
 PROJECT: W.I/2 SEC.7 THE LAKES AT WEST SAHARA (PHASE 3)

WO NO: 881
 BY: B.L.D.
 DATE: 6/87
 SCALE: 1" = 40'

SHEET: 9
 OF 14 SHEETS

4270 (17) 1074-1933-3

