

REV	DATE	BY	REVISION
1	8-24-87	PC	ADDED BRANCH TO 24+55.92
2	11-18-87	DA	STREET LIGHTS CHANGE TO 180 V. CHANGE WALKWAY CHANGE TO 180 V. TO 180 V. WALKWAY LIGHTS
3	12-23-87	PC	ADDED BRANCH TO 24+55.92

ESI ENGINEERS & SURVEYORS INC.
 701 NEW BRIDGE ROAD, SUITE 100, WILMINGTON, DE 19801
 (302) 439-1111

PAUL C. ESI
 REGISTERED PROFESSIONAL ENGINEER
 NO. 5051

7/8/87

TITLE
 STREET & SEWER PLAN & PROFILE
 (LAKE SOUTH DRIVE & LAKE NORTH DRIVE - STA. 20+00 TO STA. 31+00)

PROJECT
 W.1/2 SEC.7 THE LAKES AT WEST SAHARA
 (PHASE 3)

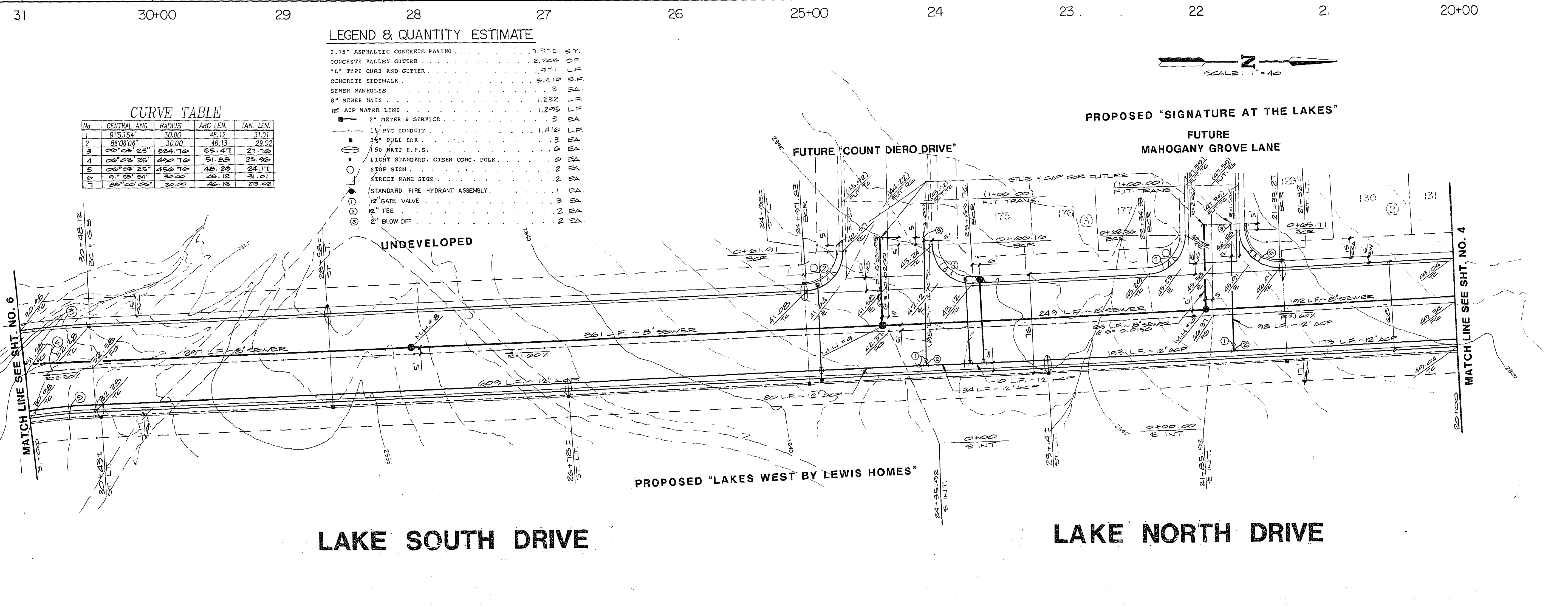
WO NO. 5051

BY CHAD

DATE 6/87

SCALE
 HORIZ. 1"=40'
 VERT. 1"=4'

SHEET
 5
 OF 14 SHEETS



CURVE TABLE

NO.	CENTRAL ANG.	RADIUS	ARC LEN.	TAN. LEN.
1	91°51'54"	30.00	48.12	31.01
2	88°02'06"	30.00	46.13	29.02
3	06°03'25"	524.76	55.47	27.76
4	06°03'25"	426.76	51.28	25.28
5	06°03'25"	426.76	48.29	24.11
6	01°59'54"	30.00	48.12	31.01
7	88°02'06"	30.00	46.13	29.02

LEGEND & QUANTITY ESTIMATE

- 3.75" ASPHALTIC CONCRETE PAVING 7,247.2 SF.
- CONCRETE VALLEY GUTTER 2,224 LF.
- "L" TYPE CURB AND GUTTER 1,371 LF.
- CONCRETE SIDEWALK 5,150 SF.
- SEWER MANHOLES 3 EA.
- 8" SEWER MAIN 1,232 LF.
- 12" ACP WATER LINE 3 EA.
- 2" METER & SERVICE 1,416 LF.
- 1 1/2" PVC CONDUIT 3 EA.
- 3/4" PULL BOX 3 EA.
- 50 MATT H.P.S. 6 EA.
- LIGHT STANDARD, GREEN CONC. POLE 6 EA.
- STOP SIGN 2 EA.
- STREET NAME SIGN 2 EA.
- STANDARD FIRE HYDRANT ASSEMBLY 1 EA.
- 1/2" GATE VALVE 1 EA.
- 1/2" TEE 1 EA.
- 2" BLOW OFF 1 EA.

LAKE SOUTH DRIVE

LAKE NORTH DRIVE