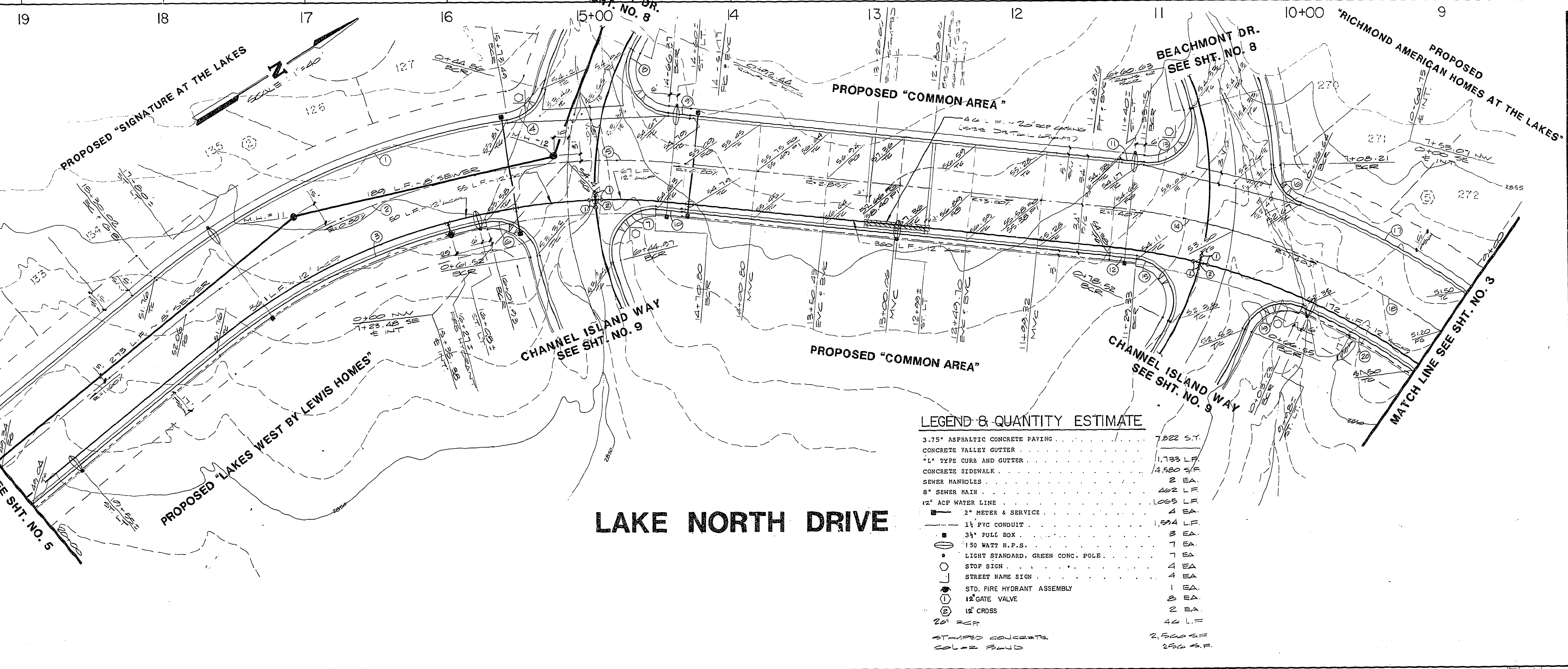


REV	DATE	BY	REVISION
1	6/29/87	PE	ISSUED FOR PERMIT
2	7/2/87	PS	ISSUED FOR PERMIT
3	11/18/87	DA	CHANGE STREET LIGHTS FROM 240V/50

**CURVE DATA TABLE**

NO.	ANGLE	R	L	T
1	30° 44' 17"	512.17	274.71	140.70
2	35° 18' 17"	476.17	294.64	152.17
3	27° 19' 49"	444.17	211.87	107.99
4	66° 12' 28"	30.00	34.63	19.56
5	108° 05' 26"	478.17	84.21	42.22
6	91° 15' 38"	30.00	47.78	30.67
7	108° 05' 38"	30.00	56.86	41.74
8	112° 33' 22"	30.00	59.93	44.95
9	01° 49' 18"	512.17	16.28	6.14
10	01° 21' 08"	444.17	18.24	6.12
11	01° 49' 18"	512.17	16.28	6.14
12	01° 21' 08"	444.17	18.24	6.12
13	112° 33' 22"	30.00	59.93	44.95
14	108° 05' 26"	478.17	84.21	42.22
15	108° 05' 38"	30.00	56.86	41.74
16	91° 15' 29"	30.00	34.47	19.56
17	108° 01' 26"	512.17	135.64	68.22
18	38° 18' 17"	478.17	294.64	152.16
19	91° 15' 37"	30.00	47.78	30.67
20	12° 22' 10"	444.17	95.49	48.33



**LEGEND & QUANTITY ESTIMATE**

3.75" ASPHALTIC CONCRETE PAVING	7,822 S.Y.
CONCRETE VALLEY GUTTER	
1" TYPE CURB AND GUTTER	1,133 L.F.
CONCRETE SIDEWALK	4,580 S.F.
SEWER MANHOLES	2 EA.
8" SEWER MAIN	462 L.F.
12" ACP WATER LINE	1,069 L.F.
2" METER & SERVICE	
1 1/2" PVC CONDUIT	1,594 L.F.
34" PULL BOX	3 EA.
150 WALT H.P.S.	7 EA.
LIGHT STANDARD, GREEN CONC. POLK.	7 EA.
STOP SIGN	4 EA.
STREET NAME SIGN	4 EA.
STD. FIRE HYDRANT ASSEMBLY	1 EA.
12" GATE VALVE	8 EA.
12" CROSS	2 EA.
20' RCP	46 L.F.
STAMPED CONCRETE	2,500 S.F.
SOLAR FLUID	250 S.F.

**ES ENGINEERS & SURVEYORS INC.**  
7010 W. CHANDLER AVENUE, SUITE 117, CHANDLER, AZ 85226

**STREET & SEWER PLAN & PROFILE**  
(LAKE NORTH DRIVE - STA. 9+00 TO STA. 20+00)

**W/1/2 SEC.7 THE LAKES AT WEST SAHARA**  
(PHASE 3)

WO NO. 5051  
BY: PV/PE  
DATE: 6/87  
SCALE: HORIZ. 1"=40'  
VERT. 1"=4'

SHEET: **4**  
OF 14 SHEETS