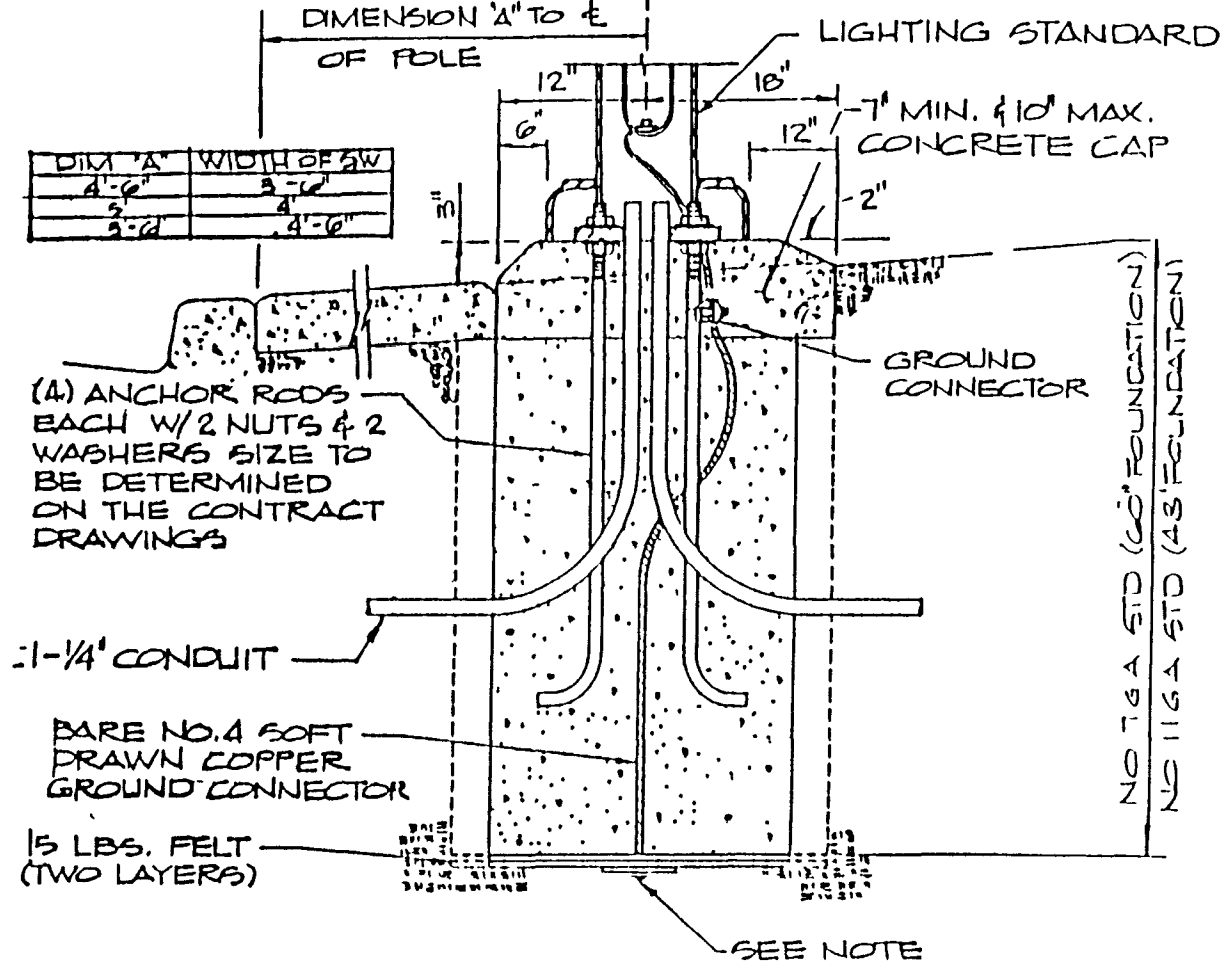
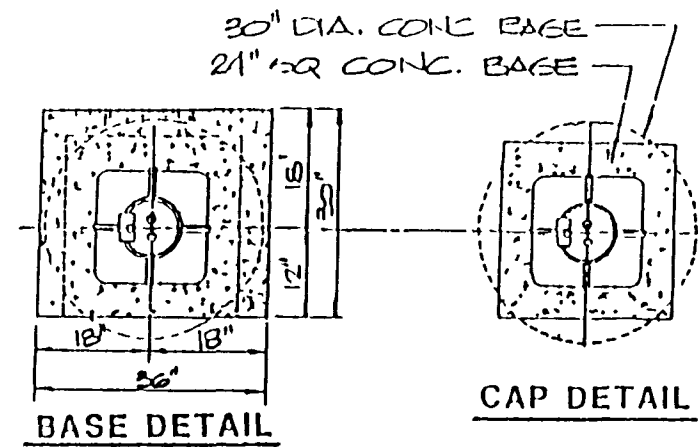
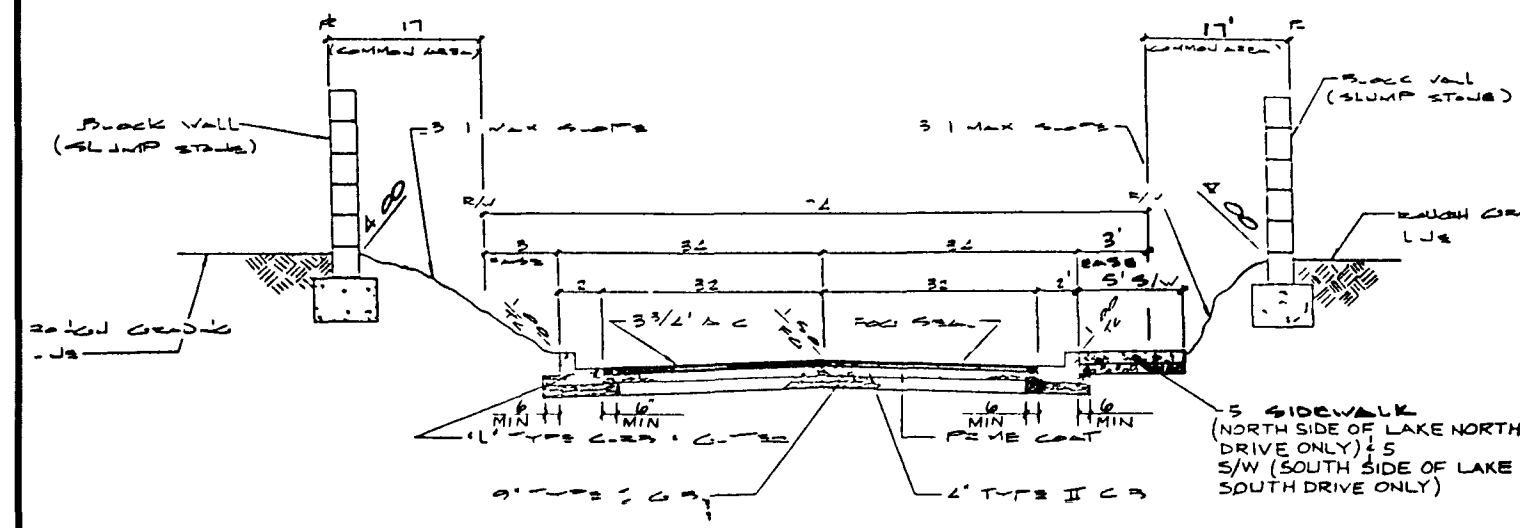


NOTE:
 1. MADE ELECTRODE SHALL BE IN ACCORDANCE W/ARTICLE 250-83 OF THE NATIONAL ELECTRICAL CODE
 2. TOP OF SLOPE IS DOWN AND AWAY FROM THE STANDARD FOR DRAINAGE

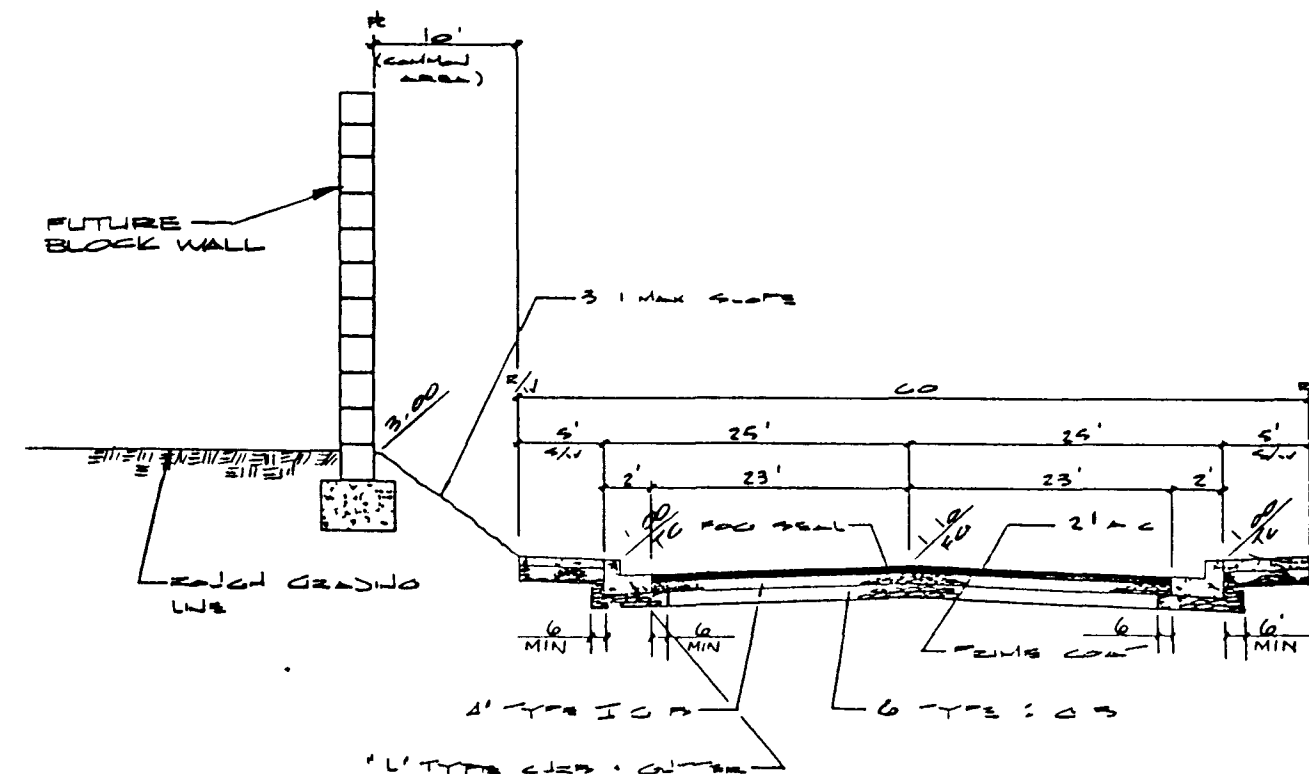


TYPICAL STREET LIGHT DETAIL



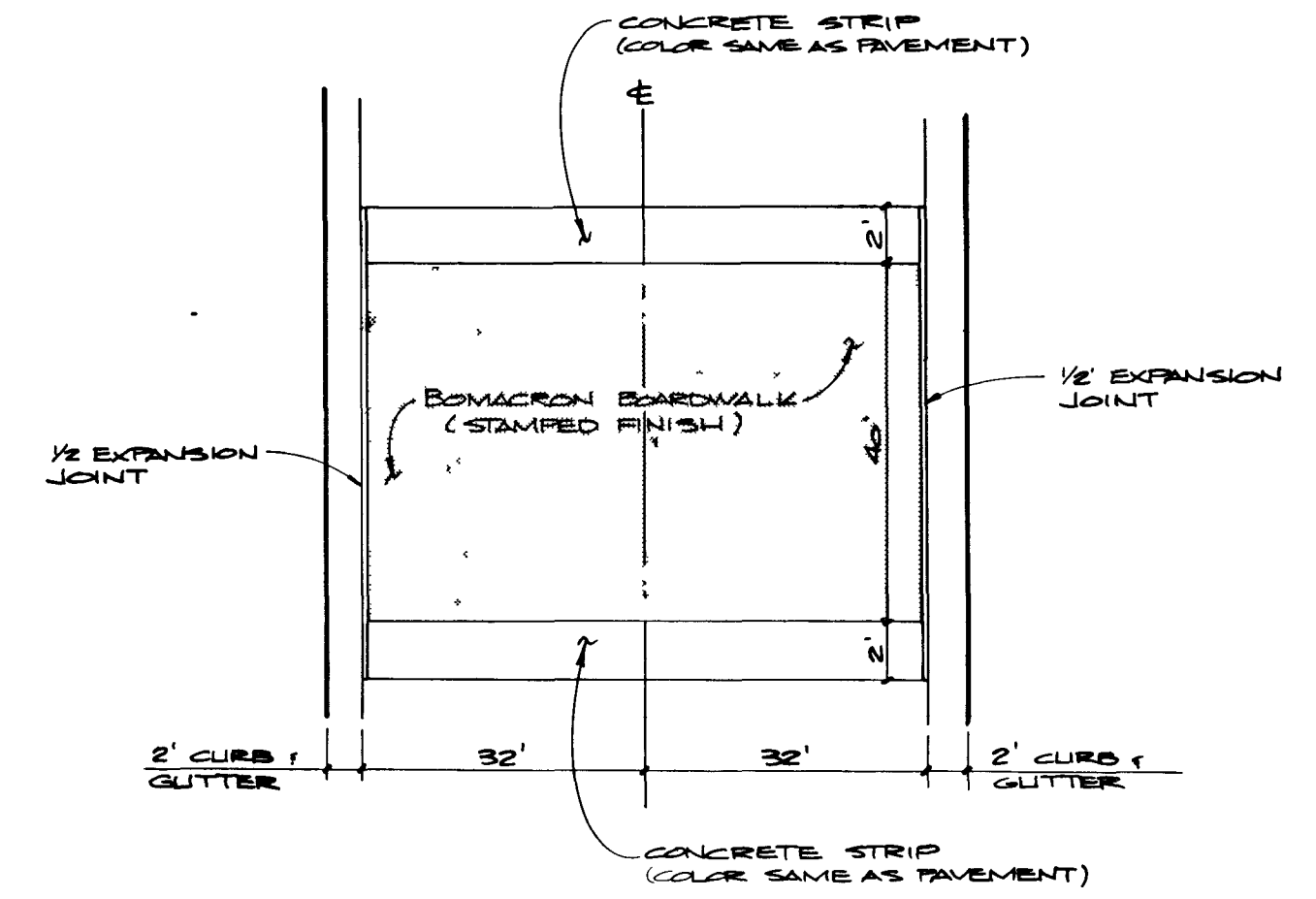
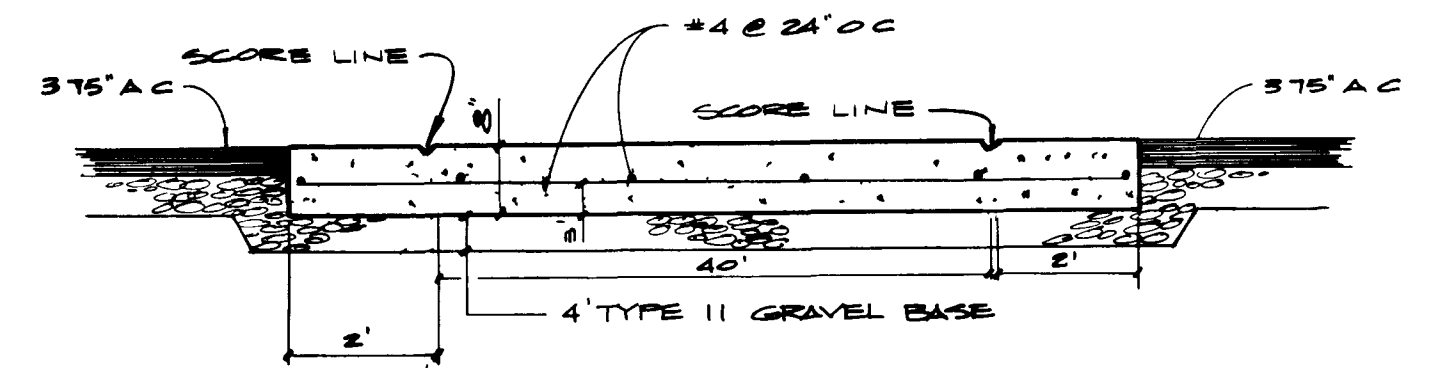
1. APPROVAL FOR USE OF NATIVE MATERIAL TO BE PROCESSED IN ACCORDANCE WITH CIV "STANDARD OF POLICY FOR USE OF NATIVE MATERIAL IN LIEU OF IMPORTED TYPE I BASE FOR DESIGNATED CITY STREETS" DATED JULY 25, 1984
2. 6" MINIMUM TYPE I OR TYPE II GRAVEL BASE UNDER CURB AND GUTTER

TYPICAL 74 STREET SECTION
 (LAKE NORTH & LAKE SOUTH DRIVE)

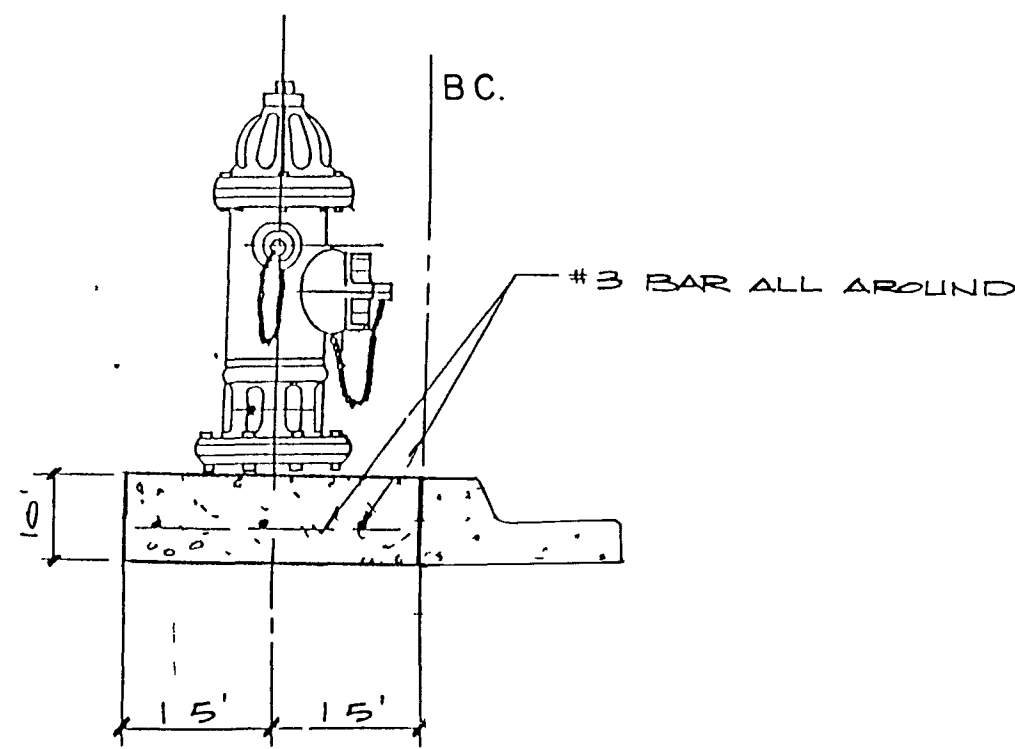


1. APPROVAL FOR USE OF NATIVE MATERIAL TO BE PROCESSED IN ACCORDANCE WITH CIV "STANDARD OF POLICY FOR USE OF NATIVE MATERIAL IN LIEU OF IMPORTED TYPE I BASE FOR DESIGNATED CITY STREETS" DATED JULY 25, 1984
2. 6" MINIMUM TYPE I OR TYPE II GRAVEL BASE UNDER CURB AND GUTTER

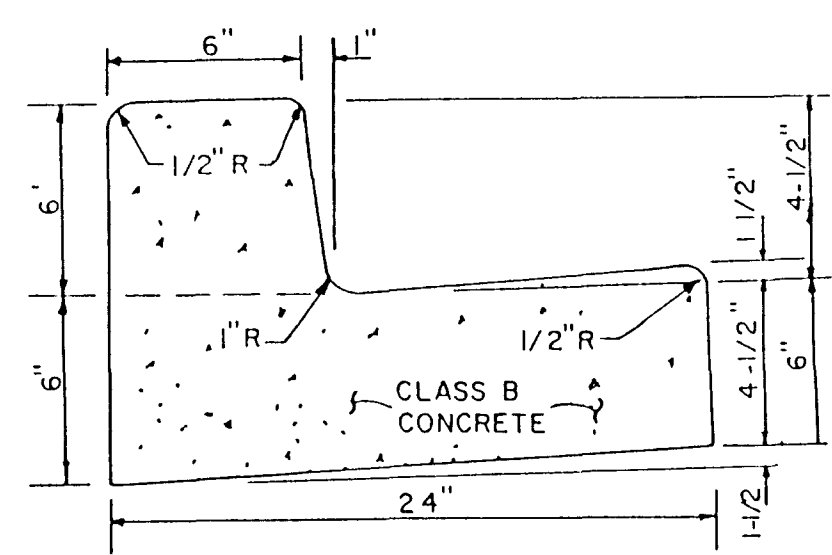
TYPICAL 60 STREET SECTION
 (LOOP 1 & LOOP 2)



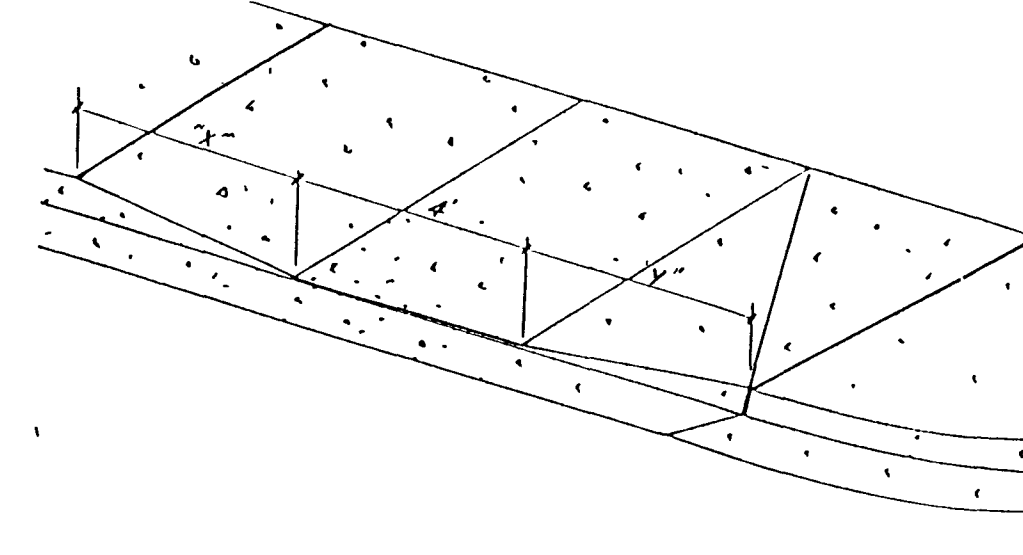
STAMPED CONCRETE DETAIL



TYPICAL FIRE HYDRANT DETAIL

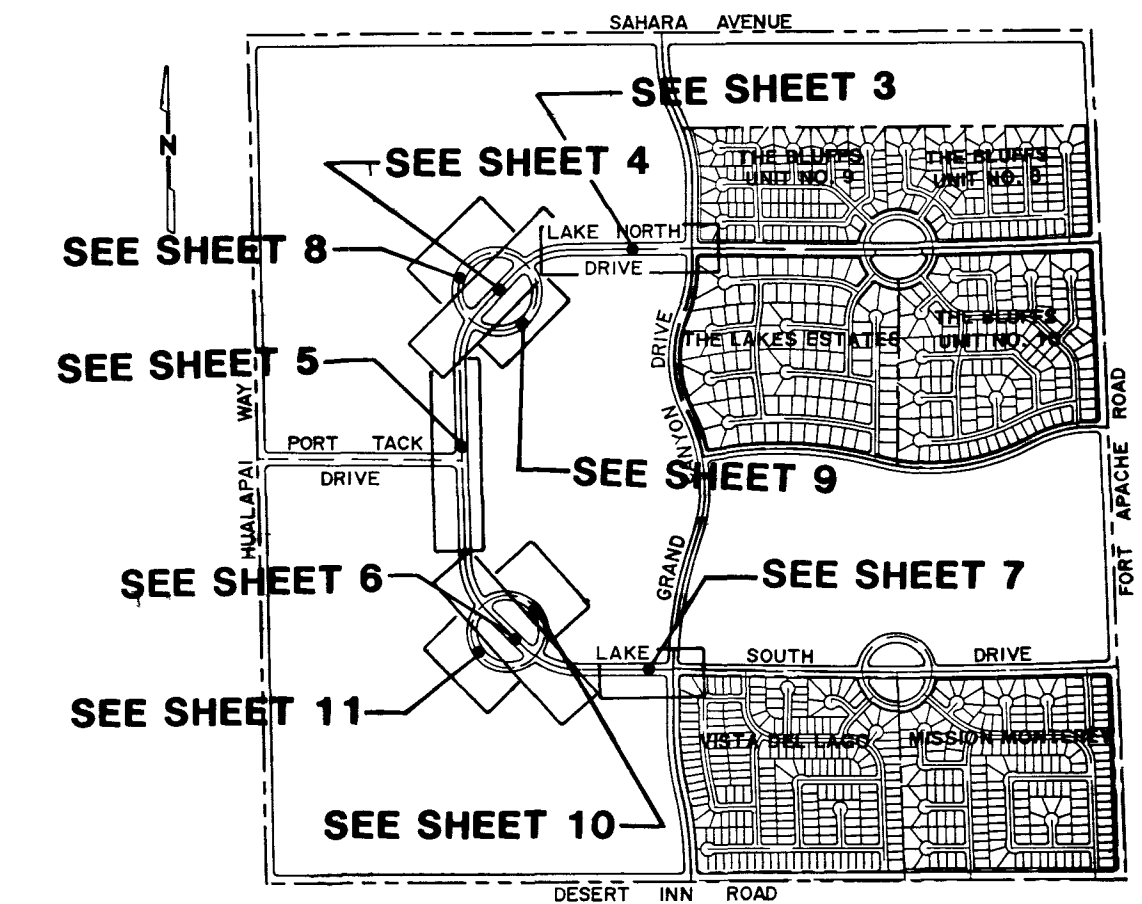


"L" TYPE CURB & GUTTER DETAIL



TYPICAL WHEELCHAIR RAMP SLOPE DETAIL

SLOPE	1"	2"	3"
0% TO 1.5%	4'	4'	4'
1.5% TO 2.5%	4'	4'	4.5'
2.5% TO 3.5%	4.5'	5.0'	5.0'
3.5% TO 4.5%	5.0'	5.5'	5.5'
4.5% TO 5.5%	5.5'	6.0'	6.0'



SHEET BREAKDOWN DETAIL

REVISION

NO.	DATE	BY	REVISION

ESI ENGINEERS & SURVEYORS INC.
 701 N. CHAMBERLAIN, SUITE 100, DENVER, CO 80202
 (303) 733-3434
 SUBMITTED BY: *Paul E. Williams* 7/19/07

TITLE: DETAIL SHEET

PROJECT: W.1/2, SEC.7 THE LAKES AT WEST SAHARA (PHASE 3)

WONO: 5051

BY: GN

DATE: 6/07

SCALE: NONE

SHEET: 2

OF 14 SHEETS

