

2835

2835

2825

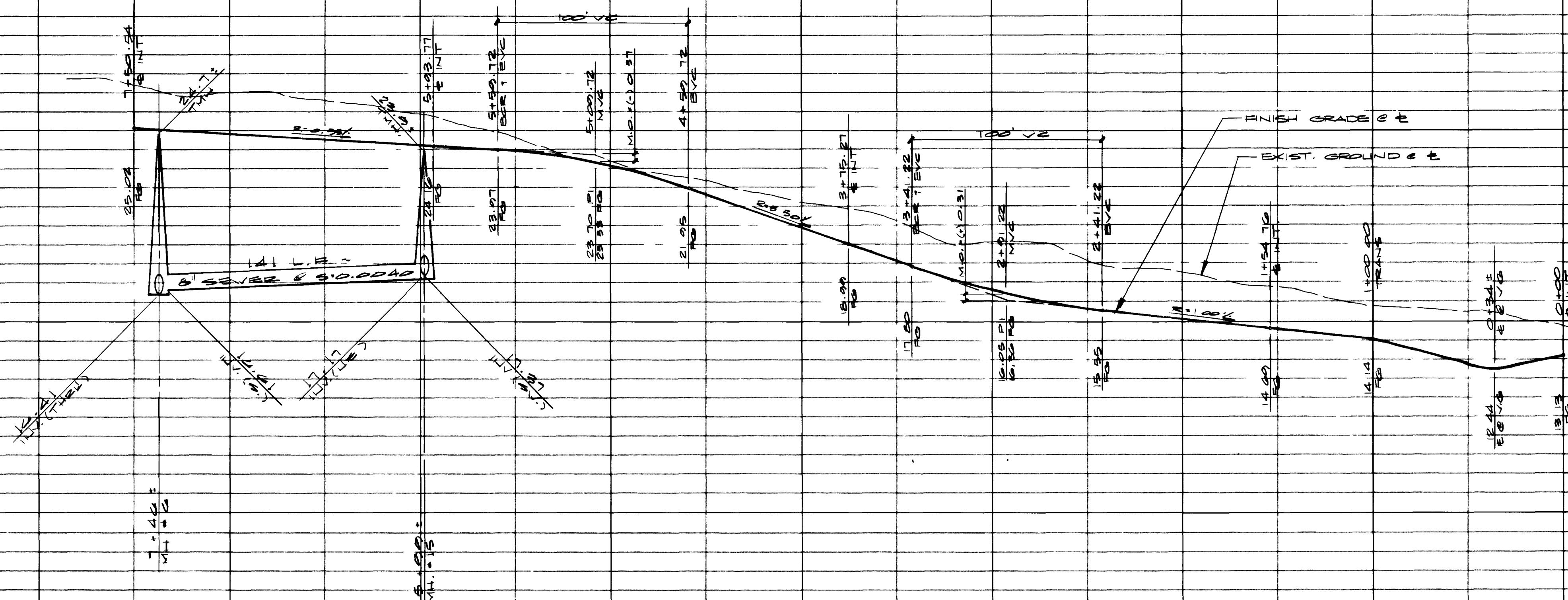
2825

2815

2815

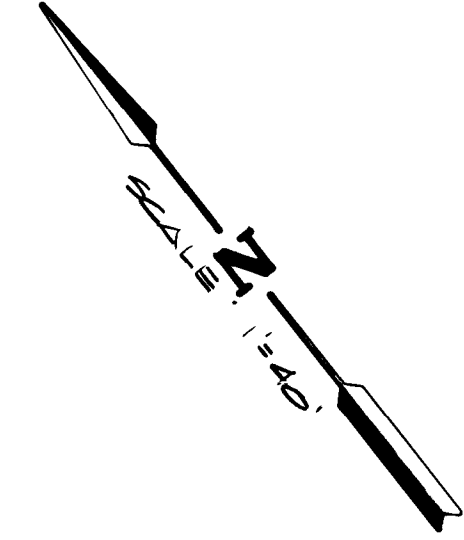
2805

2805



CURVE DATA TABLE

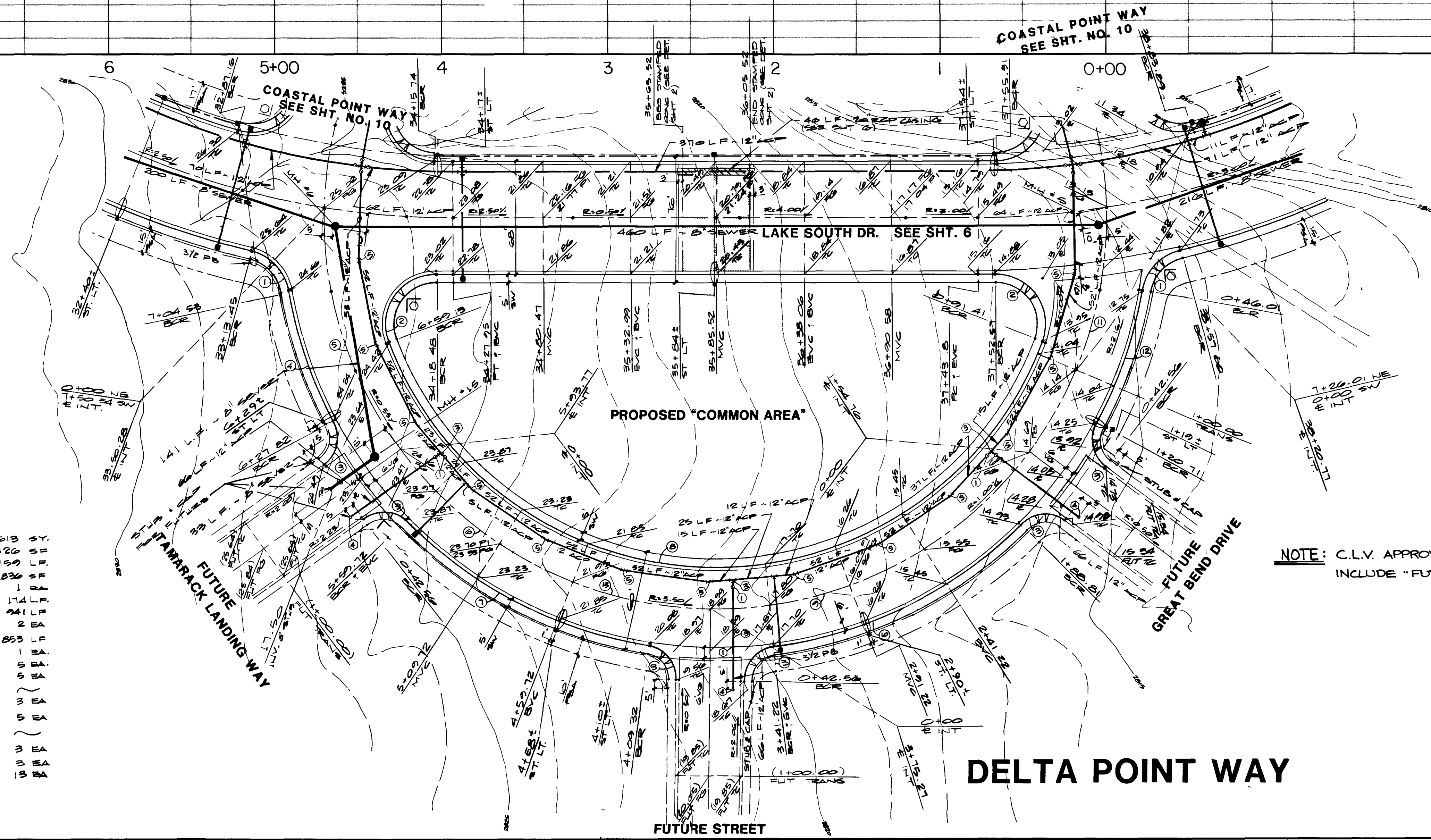
NO	ANGLE	R	L	T
1	66° 54' 38"	30.00	35.03	19.82
2	111° 53' 52"	30.00	58.59	44.39
3	81° 41' 00"	20.00	28.51	17.29
4	18° 42' 10"	260.00	84.87	42.82
5	38° 13' 23"	235.00	156.77	81.43
6	53° 16' 22"	235.00	216.50	117.87
7	36° 40' 09"	260.00	166.40	86.16
8	138° 25' 03"	210.00	507.32	553.08
9	53° 45' 47"	235.00	220.51	119.13
10	37° 09' 34"	260.00	168.62	87.40
11	37° 43' 56"	235.00	154.76	80.30
12	18° 12' 46"	260.00	82.65	41.68
13	182° 59' 26"	235.00	750.54	5002.64



LEGEND & QUANTITY ESTIMATE

- 2" ASPHALTIC CONCRETE PAVING
- CONCRETE VALLEY GUTTER
- *L* TYPE CURB AND GUTTER
- CONCRETE SIDEWALK
- SEWER MANHOLES
- 8" SEWER MAIN
- 12" ACP WATER LINE
- 2" METER & SERVICE
- 1 1/2" PVC CONDUIT
- 3/4" PULL BOX
- 150 MATT H.P.S.
- LIGHT STANDARD, GREEN CONC. POLE
- STOP SIGN
- STREET NAME SIGN
- 12" GATE VALVE
- 12" CROSS
- 12" TEE
- 2" BLOW OFF
- 1 1/2" ELL

- 3,613 SY.
- 2,120 SF
- 1,139 LF
- 6,836 SF
- 1 EA
- 174 LF
- 241 LF
- 2 EA
- 2 EA
- 1 EA
- 5 EA
- 3 EA
- 3 EA
- 3 EA
- 3 EA
- 3 EA
- 1 EA



DELTA POINT WAY

REVISION

REV	DATE	BY	REVISION
1	8-28-07	PC	REMOVED WATER LINE FROM LAYOUT
2	9-10-07	PC	ADJUSTED MANHOLE ELEVATIONS
3	11-19-07	DA	ADJUSTED MANHOLE ELEVATIONS TO 100V
4	3-2-08	DA	ADJUSTED MANHOLE ELEVATIONS TO 100V
5	10-21-08	PC	ADJUSTED MANHOLE ELEVATIONS TO 100V

ES&S ENGINEERS & SURVEYORS INC.
 2010 W. UNIVERSITY BLVD. SUITE 117, FORT WORTH, TEXAS 76102-3030 FAX: 817-733-6443

SUBMITTED BY: *[Signature]* 7/6/07

TITLE
 STREET & SEWER PLAN & PROFILE
 (DELTA POINT WAY)

PROJECT
 W/1/2 SEC.7 THE LAKES AT WEST SAHARA
 (PHASE 3)

WO NO 5031

BY PC&GN

DATE 6/07

SCALE HORIZ 1"=40'
 VERT 1"=4'

SHEET

11

OF 4 SHEETS

