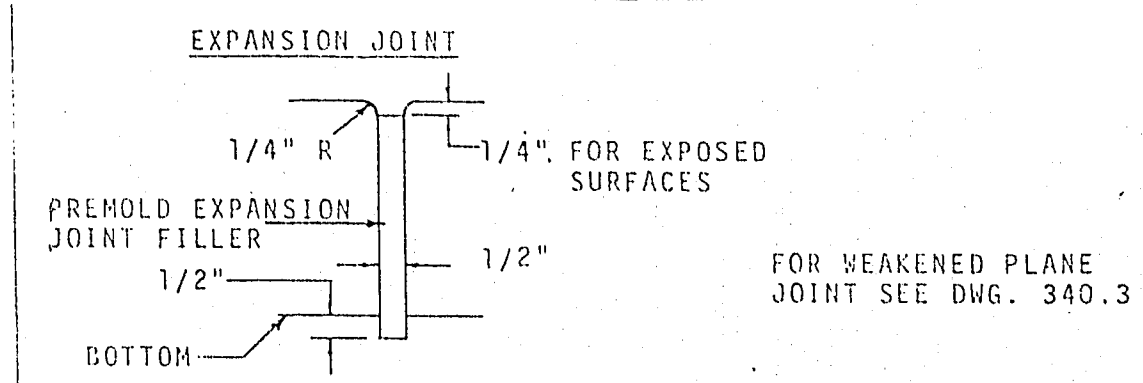
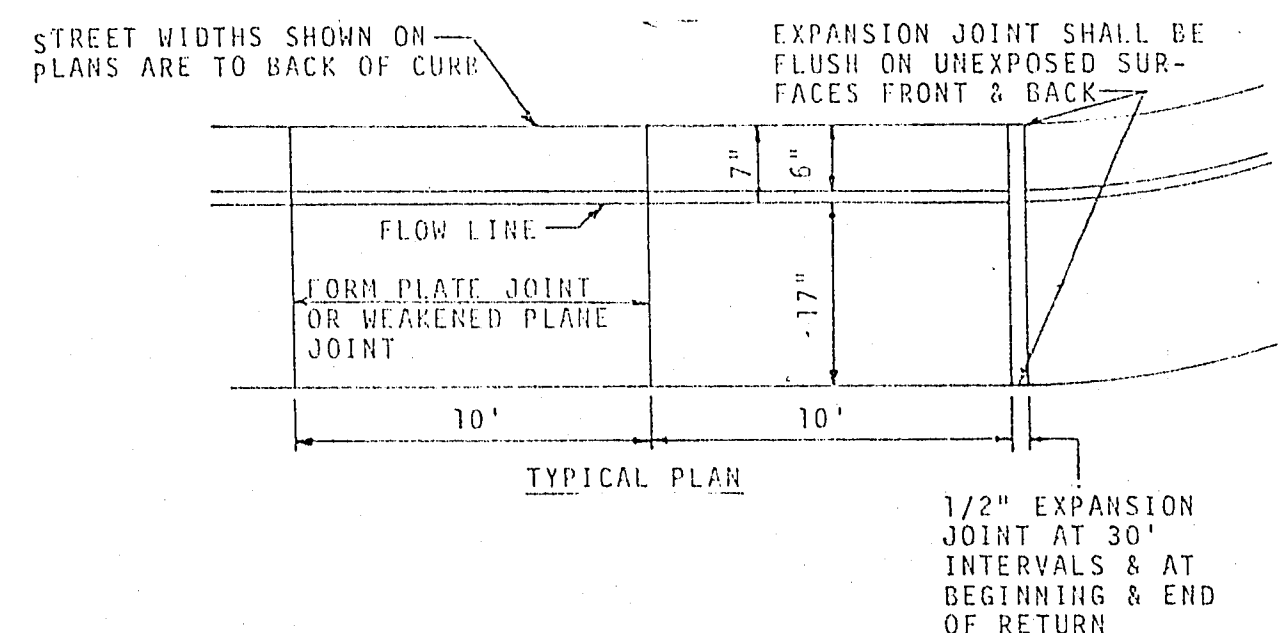
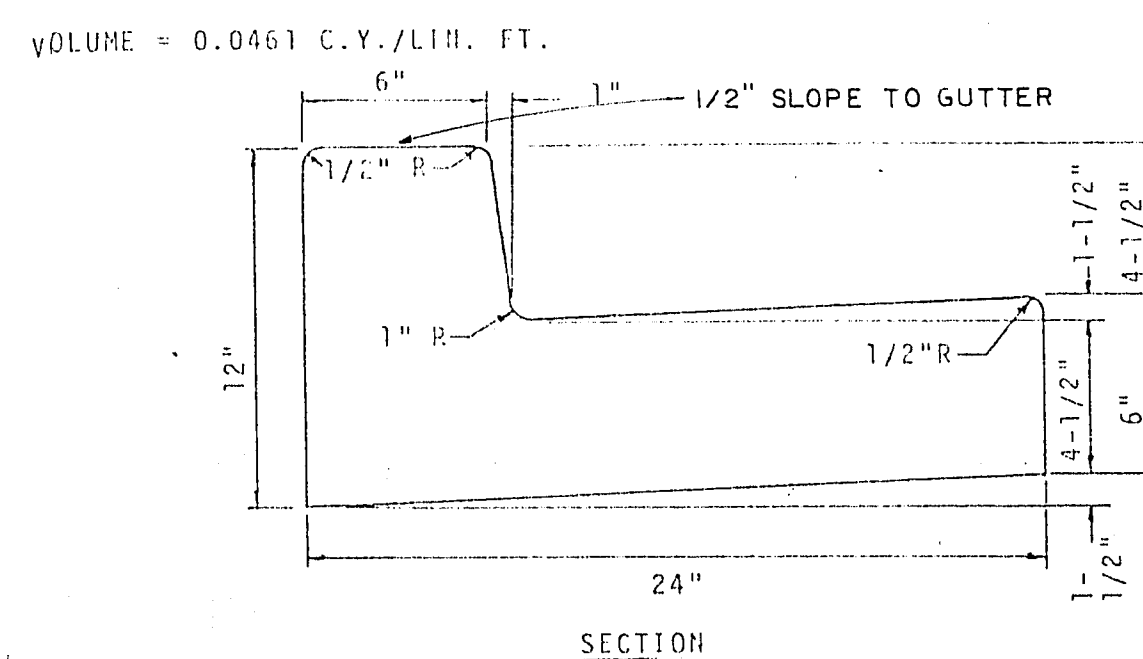


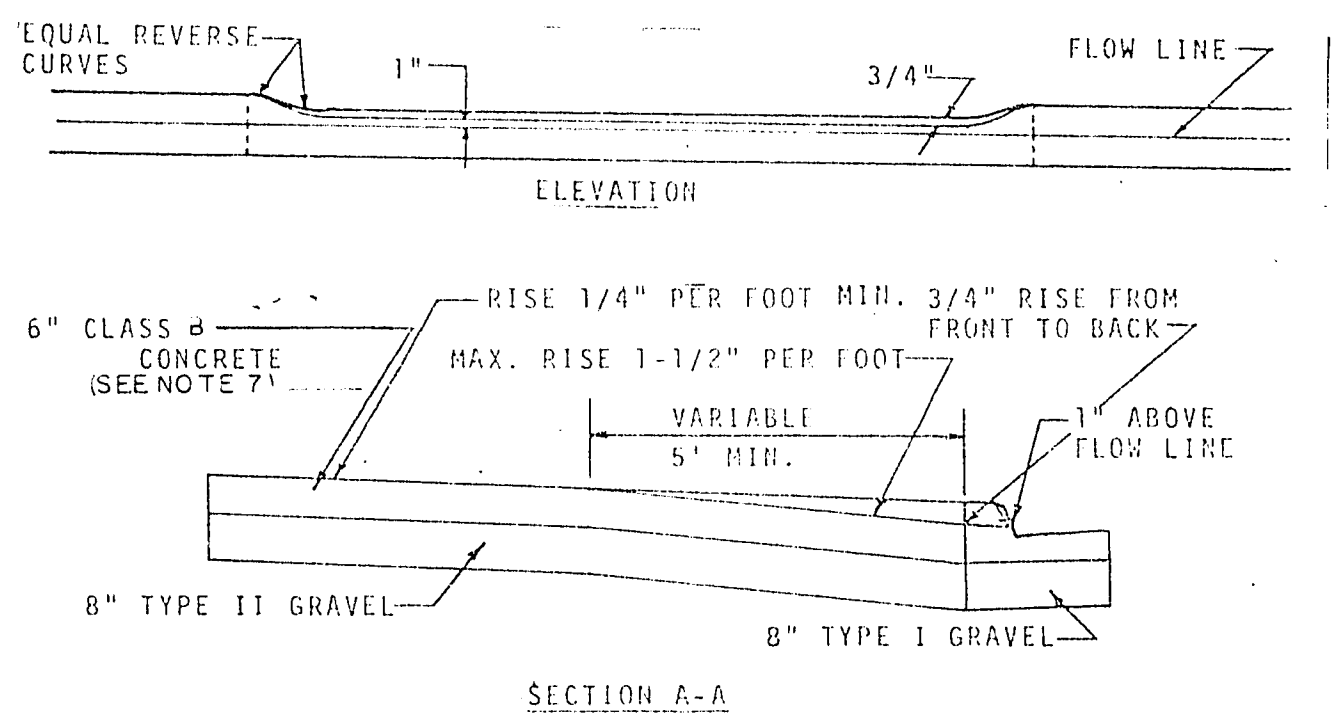
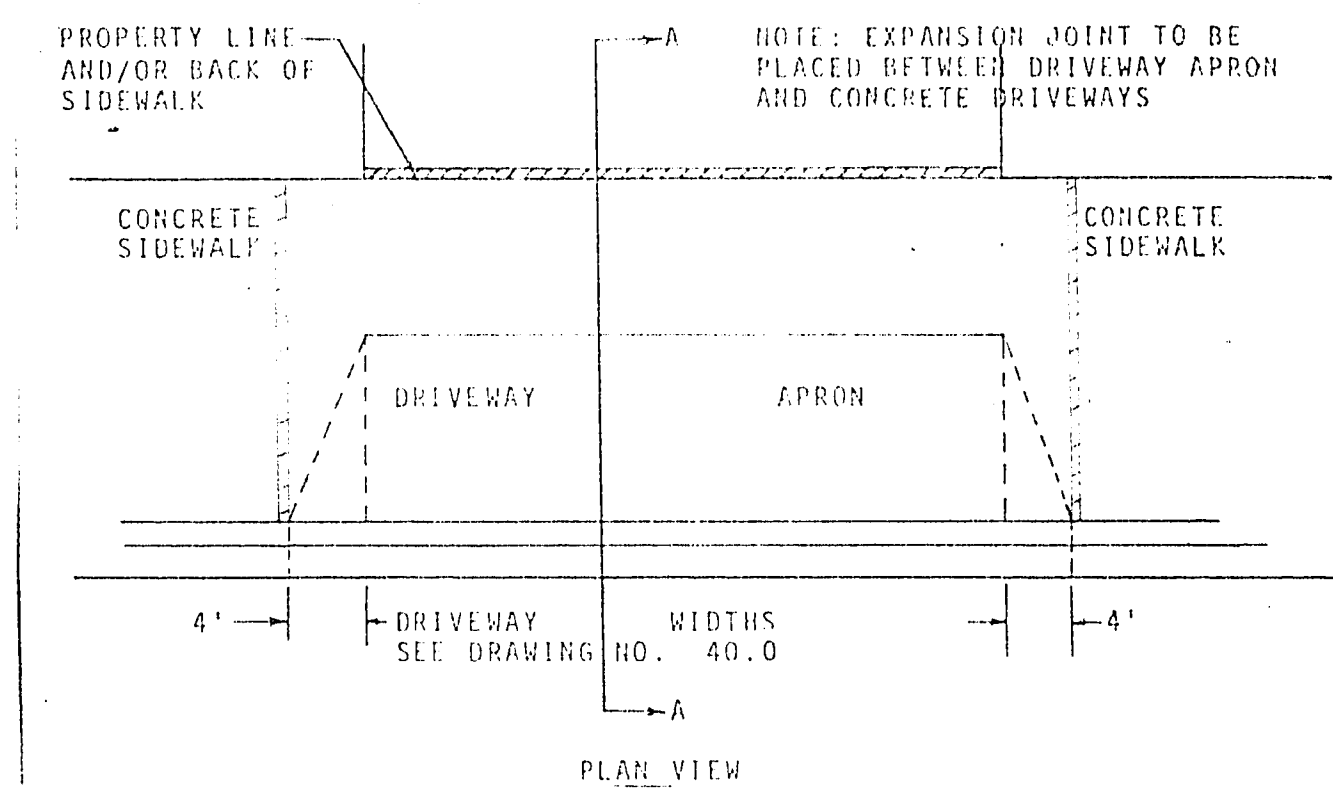
**NOTES:**

1. CONCRETE TO BE CLASS B CONCRETE (SEE NOTE 7) RIGT
2. 8' & 10' GUTTERS TO BE USED ON ALL MAJOR STREETS
3. 6' VALLEY GUTTERS MAY BE USED ON MINOR, LIGHT TRAVELLED STREETS
4. LONGITUDINAL REINFORCING BARS:  
PLACE 7 - #4 BARS IN 10' VALLEY GUTTER  
PLACE 5 - #4 BARS IN 8' VALLEY GUTTER  
PLACE 3 - #4 BARS IN 6' VALLEY GUTTER
5. TRANSVERSE REINFORCING BARS:  
PLACE #3 BARS AT 12" O.C.
6. STEEL MESH DISCONTINUOUS AT EXPANSION JOINT  
SLOT TO BE CONSTRUCTED WHEN DIRECTED BY THE ENGINEER  
SEE DRAWING NUMBER 340.44.

**TYPICAL VALLEY GUTTER DETAIL**

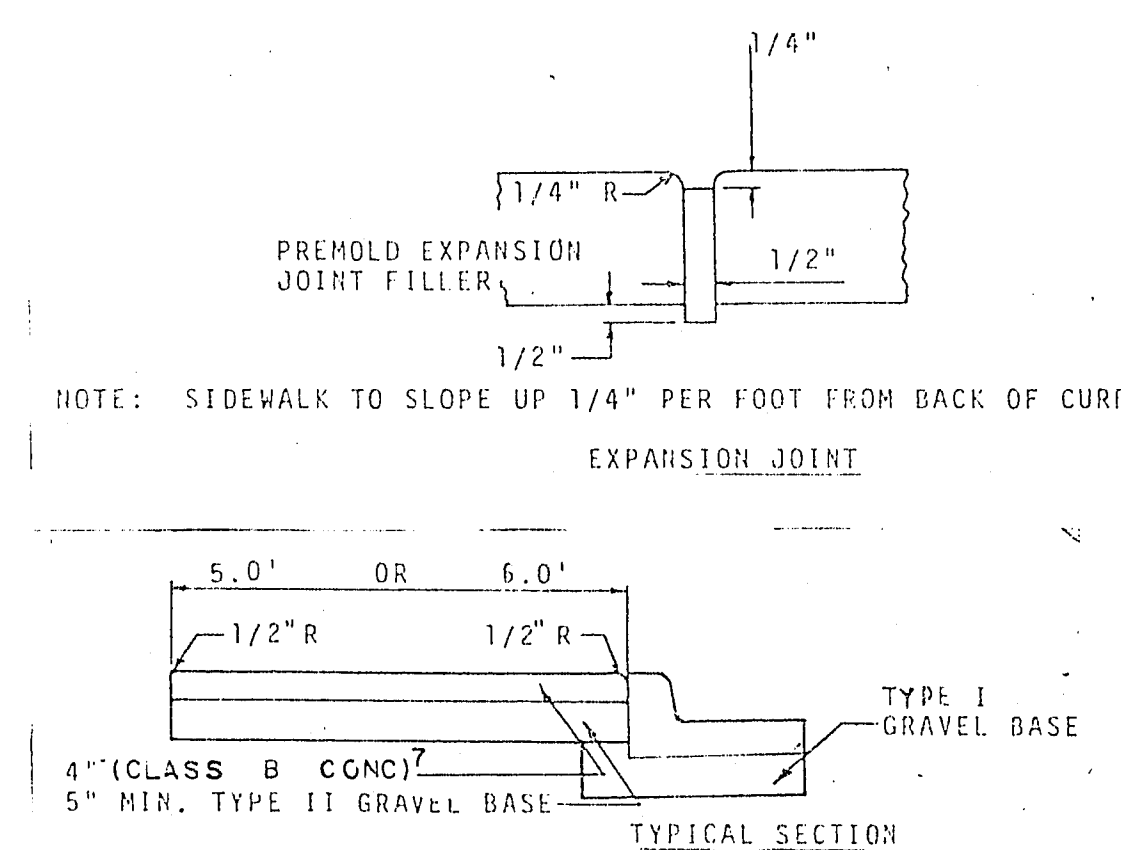
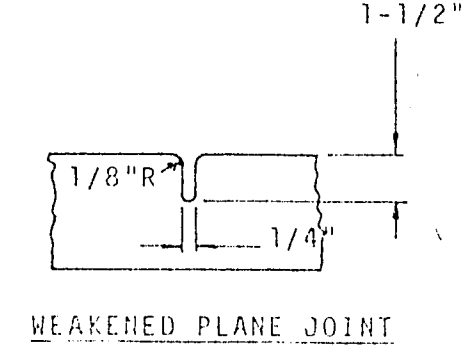
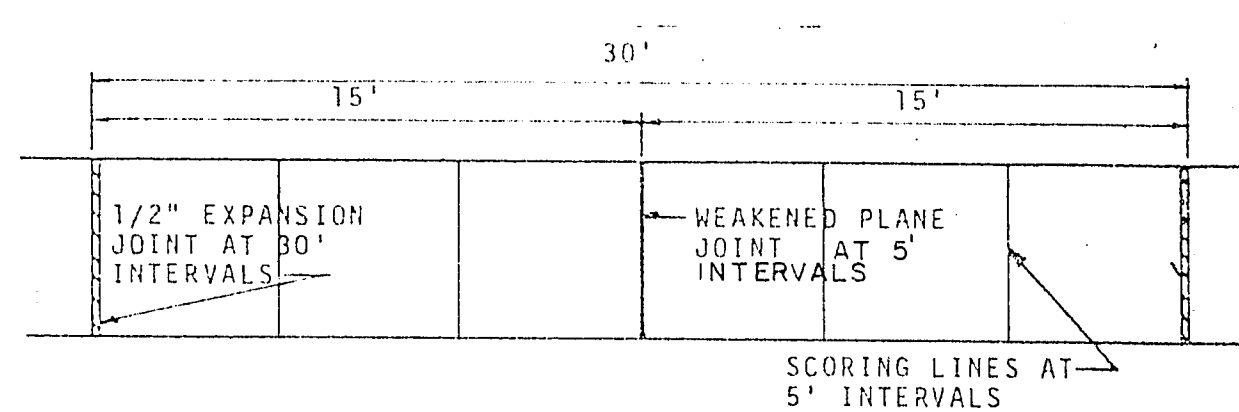


**TYPICAL "L" TYPE CURB & GUTTER DETAIL**



VOLUME OF DEPRESSED CURB (C.Y.) = (0.0385) DRIVEWAY WIDTH + (0.3379)

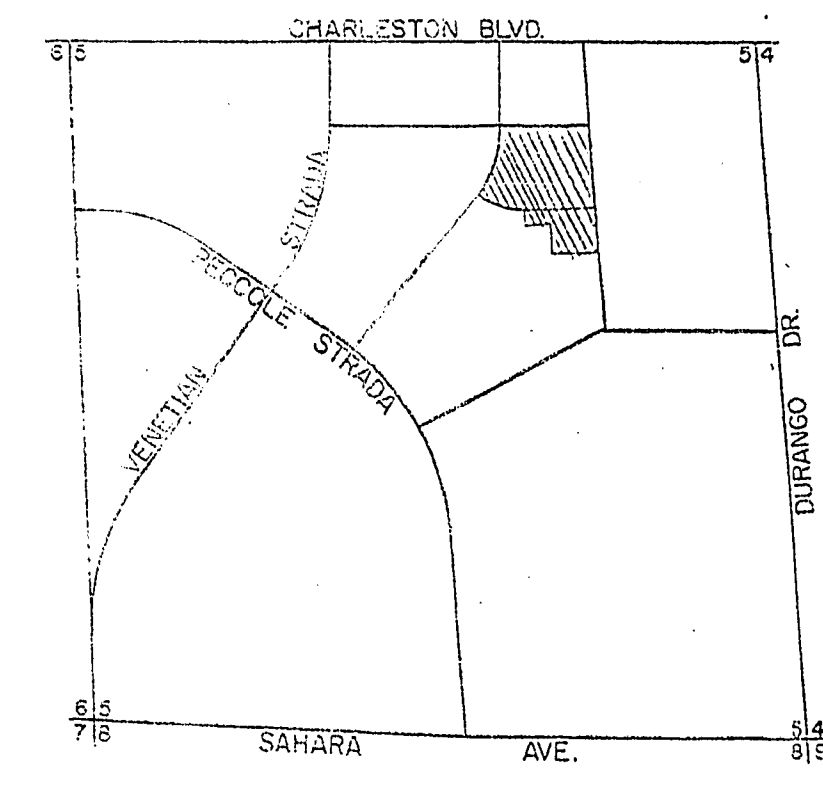
**TYPICAL DRIVEWAY DETAIL**



**TYPICAL SIDEWALK DETAIL**

**BENCHMARK**

U.S.C. & G.S. DATUM, CONC. NAIL IN MIDDLE OF PICTURE PANEL AT INTERSECTION OF CHARLESTON BOULEVARD AND DURANGO DRIVE. ELEV. 2664.41  
EQUATION - CLV DATUM + 2.04 = U.S.C. & G.S. DATUM



**VICINITY MAP**

**GENERAL NOTES:**

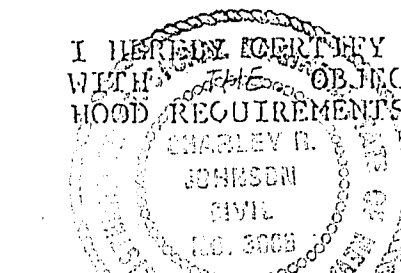
1. CURB AND GUTTER WITH A GRADE OF LESS THAN FOUR-TENTHS OF ONE PERCENT SHALL BE CONSTRUCTED BY FORMING. EACH JOINT SHALL BE CHECKED FOR GRADE PRIOR TO CONSTRUCTION AND WATER TESTED AS SOON AS POSSIBLE AFTER CONSTRUCTION.
2. WHEELCHAIR RAMPS SHALL BE CONSTRUCTED IN EACH QUADRANT OF AN INTERSECTION PER STANDARD DRAWING D22A. EXACT LOCATION OF RAMPS SHALL BE DETERMINED IN THE FIELD BY A CITY INSPECTOR.
3. CONTRACTOR SHALL PROVIDE ALL NECESSARY HORIZONTAL AND VERTICAL TRANSITION BETWEEN NEW CONSTRUCTION AND EXISTING SURFACES TO PROVIDE FOR PROPER DRAINAGE AND OF INGRESS AND EGRESS TO SAID CONSTRUCTION. EXTENT OF TRANSITIONS TO BE DETERMINED BY THE CITY ENGINEER.
4. EXISTING UTILITIES ARE LOCATED ON PLANS FOR THE CONVENIENCE OF THE CONTRACTOR ONLY. THE CONTRACTOR SHALL BEAR FULL RESPONSIBILITY FOR THE PROTECTION OF UTILITIES AND THE ENGINEER BEARS NO RESPONSIBILITY FOR UTILITIES NOT SHOWN ON PLANS OR NOT IN THE LOCATION SHOWN ON THE PLANS.
5. CONSTRUCTION TO BE PER UNIFORM STANDARD SPECIFICATIONS AND DRAWINGS, CLARK COUNTY AREA, NEVADA, LATEST EDITION.
6. TYPE V CEMENT TO BE USED IN ALL CONCRETE.
7. CONCRETE TO BE DESIGNED FOR 6.5 SACK MIX WITH A MAXIMUM WATER/CEMENT RATIO 0.45 (OR AS DESIGNED BY THE SOILS ENGINEER). MIX DESIGN TO BE APPROVED BY THE QUALITY CONTROL DIVISION PRIOR TO USE ON THIS PROJECT.

**QUANTITY ESTIMATE**

NO.	ITEM	AMOUNT	S.Y.
1	3" A.C. PAVING		S.Y.
2	2" A.C. PAVING	13,630	S.Y.
3	CONCRETE VALLEY GUTTER	2,074	S.F.
4	CURB AND GUTTER	5,904	L.F.
5	5' SIDEWALK	24,360	S.F.
6	6' SIDEWALK		S.F.
7	5' X 6" DRIVEWAY APPROACHES	5200	S.F.
8	6' X 6" DRIVEWAY APPROACHES		S.F.
9	A.C. BERM	96	L.F.

**ENGINEER'S CERTIFICATE**

I HEREBY CERTIFY THAT THESE PLANS AND/OR SPECIFICATIONS COMPLY WITH THE OBJECTIVES, MINIMUM PROPERTY STANDARDS AND NEIGHBORHOOD REQUIREMENTS AND REPRESENT THE BEST OF MY JUDGMENT.



NEVADA CERTIFICATE

APPROVED

CLV CITY ENGINEER

CLV QUALITY CONTROL ENGINEER DATE

REVISION  
DATE BY  
SUBMITTED BY  
CHARLEY R. JOHNSON  
NEVADA LICENSE # 3303  
P. E. DATE  
CONSULTING ENGINEERS & PLANNERS  
2800 WEST SAHARA AVENUE  
LAS VEGAS, NEVADA 89102  
PHONE (702) 873-7550  
nevada

COVER SHEET  
VALLEY WEST VIII  
UNIT 7

WO NO. 2916-1

BY

DATE DEC., 1981

SCALE AS NOTED

SHEET

OF 17 SHEETS

28-4961013-3170-VIII-1