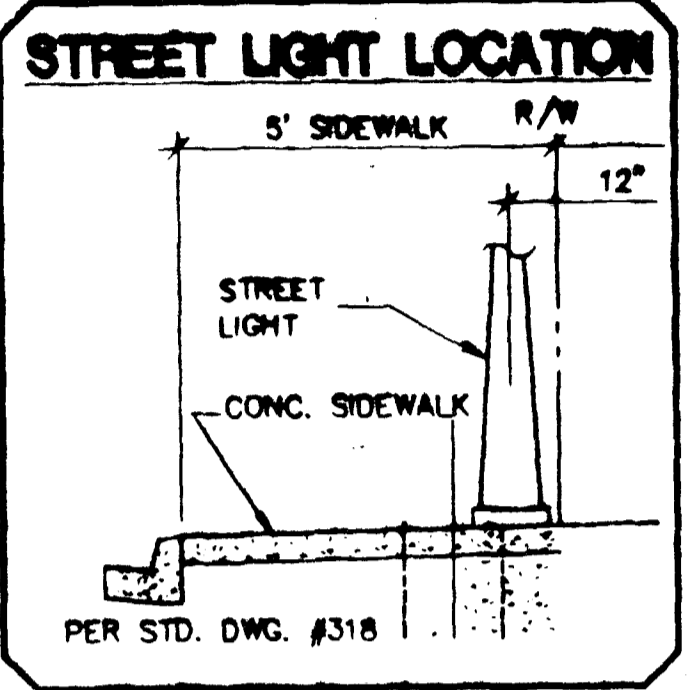
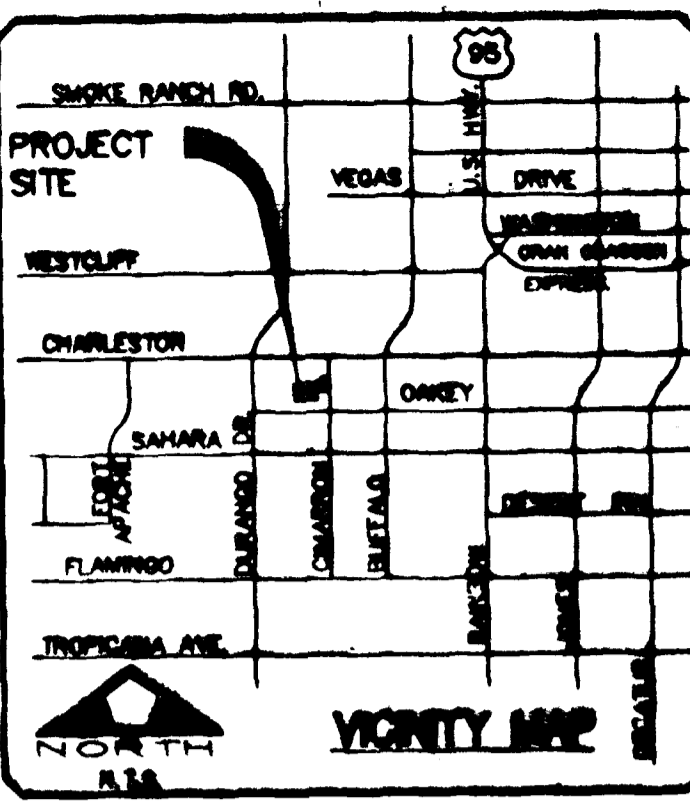


L.V.V.W.D. WATER NOTES

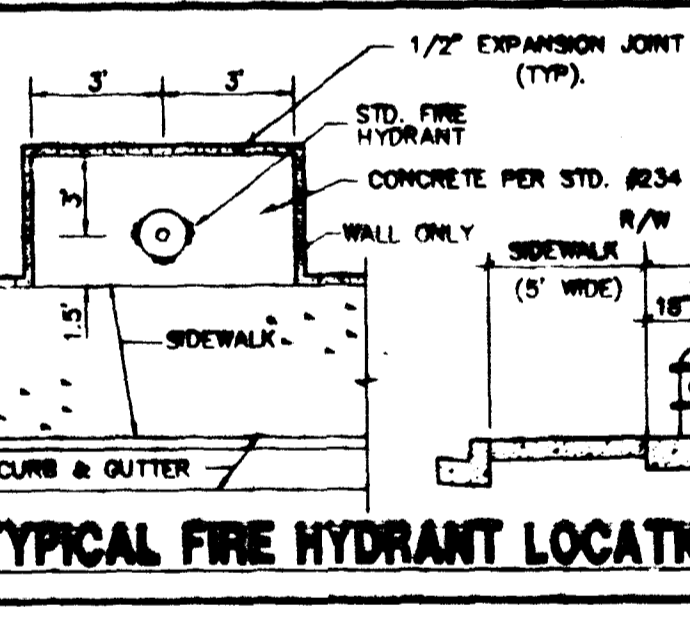
- NO WORK SHALL BE DONE UNTIL THE WATER PLANS HAVE BEEN RELEASED FOR CONSTRUCTION BY THE LVVWD. FOLLOWING WATER PLAN APPROVAL, 48 HOUR NOTICE SHALL BE GIVEN TO THE LVVWD COMMUNICATIONS CENTER (258-7171) PRIOR TO THE START OF CONSTRUCTION. NOTICE MUST BE GIVEN BY 2:00 P.M. THE BUSINESS DAY PRIOR TO A LVVWD INSPECTION.
- ALL WORK SHALL CONFORM TO LVVWD STANDARD PLATES, DRAWINGS, AND SPECIFICATIONS, LATEST EDITION.
- ALL WORK, EXCEPT AS MODIFIED BY THESE PLANS OR BY NOTE 2, SHALL BE DONE IN ACCORDANCE WITH THE MOST CURRENT DRAFT OR EDITION OF THE UNIFORM STANDARD SPECIFICATIONS FOR PUBLIC WORKS CONSTRUCTION OFFSITE IMPROVEMENT, CLARK COUNTY AREA.
- A SINGLE PIPE MATERIAL SHALL BE USED THROUGHOUT THE PROJECT UNLESS OTHERWISE APPROVED BY THE LVVWD.
- ALL SERVICE LATERALS TWO (2) INCHES IN DIAMETER AND SMALLER SHALL BE COPPER TUBING WITH LVVWD APPROVED SERVICE SHIELDS.
- ALL WATER METER BOXES SHALL BE LOCATED OUTSIDE OF DRIVEWAY AREAS.
- ALL VALVES SHALL BE LOCATED OUTSIDE OF DRIVEWAYS, VALLEY AND CURB OUTTERS.
- THE FOLLOWING REQUIREMENTS MUST BE MET IN THE EVENT A WATER LINE AND SANITARY OR STORM SEWER LINE CROSS:
 - A MINIMUM SPACING (NO IRON VERTICAL SEPARATION OUTSIDE TO OUTSIDE) MUST BE MAINTAINED WHEN THE WATER LINE IS INSTALLED OVER THE SANITARY OR STORM SEWER LINE. IF THE VERTICAL SEPARATION CANNOT BE MAINTAINED OR THE WATER LINE MUST BE PLACED UNDER THE SANITARY OR STORM SEWER LINE, THE SANITARY OR STORM SEWER LINE MUST BE CONSTRUCTED WITH ONE OF THE FOLLOWING OR, AS SHOWN ON THESE PLANS:
 - POTABLE WATER SUPPLY QUALITY MATERIAL.
 - ENCASMENT, WITH FOUR (4) INCH CONCRETE (MINIMUM) SLEEVING WITH POTABLE WATER SUPPLY QUALITY PIPE.
- EACH PROVISION MUST EXTEND ALONG THE SANITARY OR STORM SEWER, ON EITHER SIDE OF THE MAIN, A MINIMUM 10 FOOT DISTANCE PERPENDICULAR TO THE WATER MAIN EXTERIOR.
- WARNING TAPE SHALL BE REQUIRED OVER ALL MAINS, ALL SIX (6) INCH DIAMETER AND LARGER SERVICE LATERALS, AND ANY SERVICE LATERAL NOT INSTALLED PERPENDICULAR TO THE MAIN IN ACCORDANCE WITH STANDARD PLATE NO. 27.
- ALL WATER FACILITIES SHALL BE FILLED, DISINFECTED, PRESSURE TESTED, FLUSHED, FILLED AND AN ACCEPTABLE WATER SAMPLE OBTAINED, PRIOR TO CONNECTION TO THE LVVWD'S DISTRIBUTION SYSTEM.
- THE CONTRACTOR MUST OBTAIN ALL METERS TWO (2) INCHES AND SMALLER FROM LVVWD CENTRAL STORES. TELEPHONE 258-3152 FORTY-EIGHT (48) HOURS PRIOR TO PICKUP.
- CONSTRUCTION MAY INTERRUPT SERVICE, WITH LVVWD APPROVAL AND PROPER NOTIFICATION, BETWEEN THE HOURS OF 10 AM THRU 5 PM THURSDAY. CIRCUMSTANCES THAT REQUIRE TEMPORARY SERVICE FEEDS BE INSTALLED, WITHOUT LVVWD REIMBURSEMENT. ANY TEMPORARY SERVICE FEED MUST HAVE PRIOR LVVWD APPROVAL.
- ALL WATER FACILITY CONSTRUCTION MATERIALS USED MUST BE LISTED ON THE LVVWD'S APPROVED MATERIALS AND MANUFACTURERS LISTING FOR NEW FACILITIES, LATEST REVISION, OR SPECIFICALLY APPROVED ON THESE PLANS.



ESTIMATE OF WATER QUANTITIES

STD. F.H. W/8" O.V. & 6" LATERAL	3 EA
6" PVC	1084 LF
8" PVC	172 LF
6" GATE VALVE	1 EA
8" GATE VALVE	1 EA
1" WATER SERVICES	23 EA
3/4" WATER METER (FROM LVVWD)	23 EA
METER BOX	23 EA
2" BLOW-OFF W/ CAP	3 EA

NOTE: THESE QUANTITIES ARE ESTIMATES ONLY. CONTRACTOR SHALL VERIFY.



FITTINGS LEGEND

1	6" PVC
2	8" PVC
3	6" GATE VALVE
4	8" GATE VALVE
5	6"x 8" TEE
6	8"x 8" TEE
7	2" BLOW-OFF ASSEMBLY W/ CAP
8	STD. FIRE HYDRANT ASSEMBLY

TRAFFIC AND ST. LIGHT & QUANTITIES

4	25 MPH SPEED LIMIT SIGN - R2-1	1 EA
5	STOP SIGN - R1-1	1 EA
6	STREET NAME SIGN (PER STD. DWG #250)	3 EA
7	END OF ROAD MARKER	6 EA
8	STREET LIGHT (100 WATT H.P.S)	7 EA
9	STREET LIGHT (200 WATT H.P.S)	1 EA
10	NO. 3-1/2 PULL BOX	3 EA
11	1-1/4" PVC CONDUIT & WIRE	1300 LF

LAS VEGAS FIRE DEPARTMENT

FIRE FLOW REQUIREMENT IS 1,500 GALLONS PER MINUTE AT 20 POUNDS PER SQUARE INCH RESIDUAL.

BASED ON:

SQUARE FOOTAGE 2116

HEIGHT TWO-STORY

TYPE OF CONSTRUCTION TYPE 5

SPRINKLER SYSTEM NONE

OCCUPANCY SINGLE-FAMILY

ROOF CONSTRUCTION TILE

THIS SUBDIVISION IS SUPPLIED BY 2 CONNECTIONS TO A LVVWD FEEDER MAIN

STREET LIGHTING NOTES

- ALL STREET LIGHTING INSTALLATIONS EXCEPT AS NOTED ON THE STREET LIGHTING PLANS SHALL CONFORM TO THE IMPROVEMENT STANDARDS, DEPARTMENT OF PUBLIC WORKS, CLARK COUNTY, NEVADA AND THE UNIFORM STANDARD SPECIFICATIONS FOR PUBLIC WORKS CONSTRUCTION, OFF-SITE IMPROVEMENTS, CLARK COUNTY AREA, NEVADA, (LATEST EDITION)
- ALL STREET LIGHT POLES SHALL BE GALVANIZED.
- ALL HANDLE COVERS MUST BE INSTALLED, POLE CAPS POURED, AND PULLBOX LIDS BOLTED DOWN PRIOR TO ENERGIZING CIRCUIT. ALL WIRE MUST HAVE THW INSULATION.

LAS VEGAS VALLEY WATER DISTRICT DATE 8-17-95

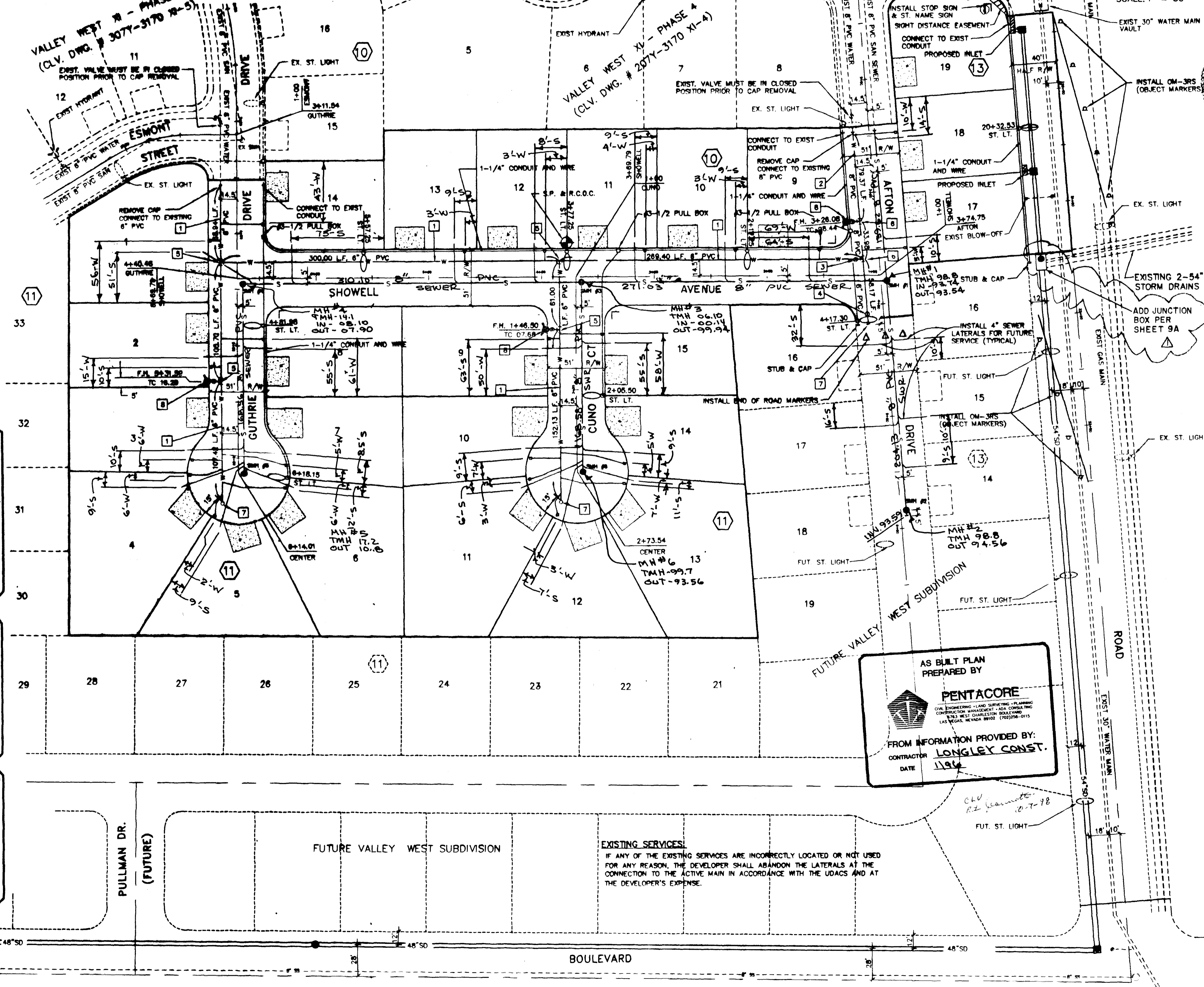
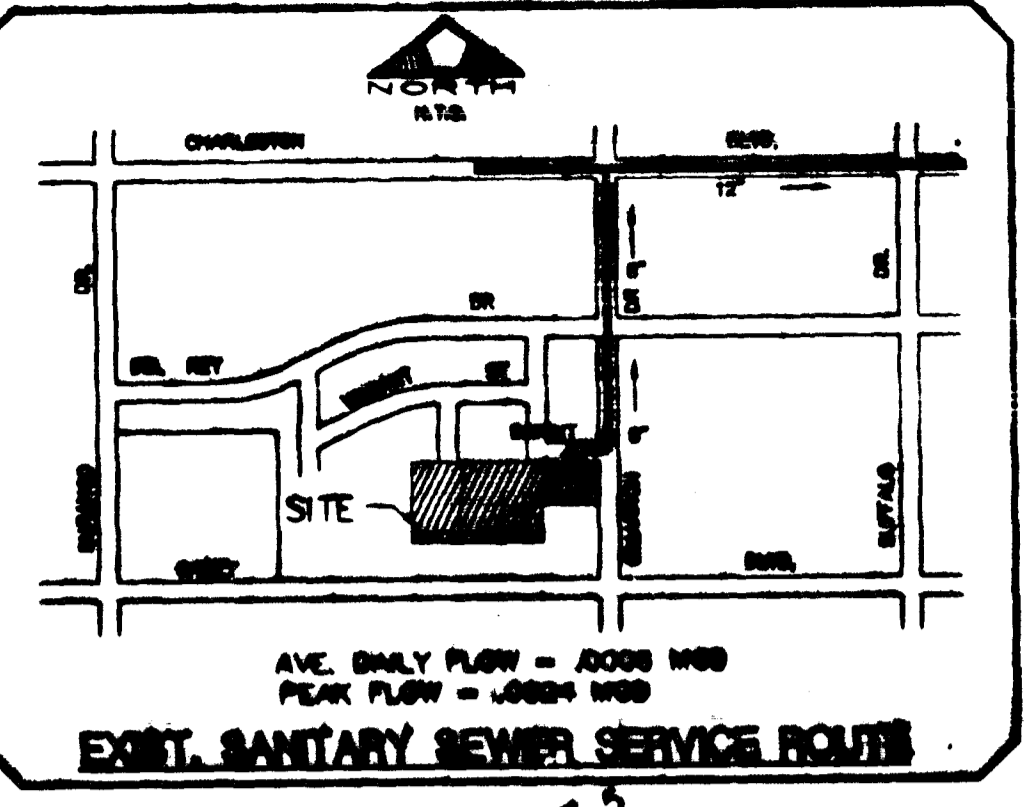
CITY OF LAS VEGAS FIRE DEPARTMENT DATE 8-8-95

NEVADA POWER COMPANY DATE 8-16-95

THIS APPROVAL IS FOR THE PLACEMENT AND CLEARANCE OF STREET LIGHT AND SIGNAL LIGHT INSTALLATIONS ONLY

1-800-227-2600

Call before you Dig.



AS BUILT PLAN PREPARED BY

PENTACORE

FROM INFORMATION PROVIDED BY:

CONTRACTOR **LONGLEY CONST.**

DATE 11/84

REVISIONS

NO.	DESCRIPTION	DATE	APP'D

DATE: 8/9/95

DESIGNED BY: C.O.S.

CHECKED BY: D.A.L.

JOB NO.: 0414002

SCALE: 1"=50'

PENTACORE Engineering, Inc.

6763 West Charleston Boulevard
Las Vegas, Nevada 89102

BAILEY & MCGAH

VALLEY WEST XI - PHASE 6

UTILITY AND TRAFFIC PLAN

SHEET 3

11118

307Y-3170-X-6

LEGEND, BOARD NOTES

1. ALL WORK SHALL BE IN ACCORDANCE WITH THE CITY OF LOS ANGELES SPECIFICATIONS FOR ELECTRICAL WORK.

2. ALL WORK SHALL BE IN ACCORDANCE WITH THE NATIONAL ELECTRICAL CODE (NEC) AS AMENDED.

3. ALL WORK SHALL BE IN ACCORDANCE WITH THE CALIFORNIA ELECTRICAL CODE (CEC) AS AMENDED.

4. ALL WORK SHALL BE IN ACCORDANCE WITH THE CITY OF LOS ANGELES ORDINANCES.

5. ALL WORK SHALL BE IN ACCORDANCE WITH THE CITY OF LOS ANGELES DEPARTMENT OF PUBLIC WORKS SPECIFICATIONS.

6. ALL WORK SHALL BE IN ACCORDANCE WITH THE CITY OF LOS ANGELES DEPARTMENT OF PUBLIC WORKS STANDARD SPECIFICATIONS.

7. ALL WORK SHALL BE IN ACCORDANCE WITH THE CITY OF LOS ANGELES DEPARTMENT OF PUBLIC WORKS STANDARD SPECIFICATIONS FOR ELECTRICAL WORK.

8. ALL WORK SHALL BE IN ACCORDANCE WITH THE CITY OF LOS ANGELES DEPARTMENT OF PUBLIC WORKS STANDARD SPECIFICATIONS FOR ELECTRICAL WORK.

9. ALL WORK SHALL BE IN ACCORDANCE WITH THE CITY OF LOS ANGELES DEPARTMENT OF PUBLIC WORKS STANDARD SPECIFICATIONS FOR ELECTRICAL WORK.

10. ALL WORK SHALL BE IN ACCORDANCE WITH THE CITY OF LOS ANGELES DEPARTMENT OF PUBLIC WORKS STANDARD SPECIFICATIONS FOR ELECTRICAL WORK.

CLY. FIRE DEPT. NOTES

1. ALL WORK SHALL BE IN ACCORDANCE WITH THE CITY OF LOS ANGELES DEPARTMENT OF PUBLIC WORKS STANDARD SPECIFICATIONS FOR ELECTRICAL WORK.

2. ALL WORK SHALL BE IN ACCORDANCE WITH THE CITY OF LOS ANGELES DEPARTMENT OF PUBLIC WORKS STANDARD SPECIFICATIONS FOR ELECTRICAL WORK.

3. ALL WORK SHALL BE IN ACCORDANCE WITH THE CITY OF LOS ANGELES DEPARTMENT OF PUBLIC WORKS STANDARD SPECIFICATIONS FOR ELECTRICAL WORK.

4. ALL WORK SHALL BE IN ACCORDANCE WITH THE CITY OF LOS ANGELES DEPARTMENT OF PUBLIC WORKS STANDARD SPECIFICATIONS FOR ELECTRICAL WORK.

5. ALL WORK SHALL BE IN ACCORDANCE WITH THE CITY OF LOS ANGELES DEPARTMENT OF PUBLIC WORKS STANDARD SPECIFICATIONS FOR ELECTRICAL WORK.

6. ALL WORK SHALL BE IN ACCORDANCE WITH THE CITY OF LOS ANGELES DEPARTMENT OF PUBLIC WORKS STANDARD SPECIFICATIONS FOR ELECTRICAL WORK.

7. ALL WORK SHALL BE IN ACCORDANCE WITH THE CITY OF LOS ANGELES DEPARTMENT OF PUBLIC WORKS STANDARD SPECIFICATIONS FOR ELECTRICAL WORK.

8. ALL WORK SHALL BE IN ACCORDANCE WITH THE CITY OF LOS ANGELES DEPARTMENT OF PUBLIC WORKS STANDARD SPECIFICATIONS FOR ELECTRICAL WORK.

9. ALL WORK SHALL BE IN ACCORDANCE WITH THE CITY OF LOS ANGELES DEPARTMENT OF PUBLIC WORKS STANDARD SPECIFICATIONS FOR ELECTRICAL WORK.

10. ALL WORK SHALL BE IN ACCORDANCE WITH THE CITY OF LOS ANGELES DEPARTMENT OF PUBLIC WORKS STANDARD SPECIFICATIONS FOR ELECTRICAL WORK.



LAB. VITAL INFORMATION

DATE: _____

BY: _____

PROJECT: _____

LOCATION: _____

SCALE: _____

REVISIONS:

STREET LIGHTING NOTES

1. ALL STREET LIGHTING SHALL BE IN ACCORDANCE WITH THE CITY OF LOS ANGELES DEPARTMENT OF PUBLIC WORKS STANDARD SPECIFICATIONS FOR STREET LIGHTING.

2. ALL STREET LIGHTING SHALL BE IN ACCORDANCE WITH THE CITY OF LOS ANGELES DEPARTMENT OF PUBLIC WORKS STANDARD SPECIFICATIONS FOR STREET LIGHTING.

3. ALL STREET LIGHTING SHALL BE IN ACCORDANCE WITH THE CITY OF LOS ANGELES DEPARTMENT OF PUBLIC WORKS STANDARD SPECIFICATIONS FOR STREET LIGHTING.

4. ALL STREET LIGHTING SHALL BE IN ACCORDANCE WITH THE CITY OF LOS ANGELES DEPARTMENT OF PUBLIC WORKS STANDARD SPECIFICATIONS FOR STREET LIGHTING.

5. ALL STREET LIGHTING SHALL BE IN ACCORDANCE WITH THE CITY OF LOS ANGELES DEPARTMENT OF PUBLIC WORKS STANDARD SPECIFICATIONS FOR STREET LIGHTING.

Call before you Dig

800-4-A-SAFE

1-800-4-A-SAFE

1-800-4-A-SAFE

1-800-4-A-SAFE

1-800-4-A-SAFE



DETAILS OF WIRE CHANGES

1. 14 AWG	1.00
2. 12 AWG	1.00
3. 10 AWG	1.00
4. 8 AWG	1.00
5. 6 AWG	1.00
6. 4 AWG	1.00
7. 3 AWG	1.00
8. 2 AWG	1.00
9. 1 AWG	1.00
10. 1/2 AWG	1.00
11. 1/4 AWG	1.00
12. 1/8 AWG	1.00
13. 1/16 AWG	1.00
14. 1/32 AWG	1.00
15. 1/64 AWG	1.00
16. 1/128 AWG	1.00
17. 1/256 AWG	1.00
18. 1/512 AWG	1.00
19. 1/1024 AWG	1.00
20. 1/2048 AWG	1.00
21. 1/4096 AWG	1.00
22. 1/8192 AWG	1.00
23. 1/16384 AWG	1.00
24. 1/32768 AWG	1.00
25. 1/65536 AWG	1.00
26. 1/131072 AWG	1.00
27. 1/262144 AWG	1.00
28. 1/524288 AWG	1.00
29. 1/1048576 AWG	1.00
30. 1/2097152 AWG	1.00
31. 1/4194304 AWG	1.00
32. 1/8388608 AWG	1.00
33. 1/16777216 AWG	1.00
34. 1/33554432 AWG	1.00
35. 1/67108864 AWG	1.00
36. 1/134217728 AWG	1.00
37. 1/268435456 AWG	1.00
38. 1/536870912 AWG	1.00
39. 1/1073741824 AWG	1.00
40. 1/2147483648 AWG	1.00
41. 1/4294967296 AWG	1.00
42. 1/8589934592 AWG	1.00
43. 1/17179869184 AWG	1.00
44. 1/34359738368 AWG	1.00
45. 1/68719476736 AWG	1.00
46. 1/137438953472 AWG	1.00
47. 1/274877906944 AWG	1.00
48. 1/549755813888 AWG	1.00
49. 1/1099511627776 AWG	1.00
50. 1/2199023255552 AWG	1.00
51. 1/4398046511104 AWG	1.00
52. 1/8796093022208 AWG	1.00
53. 1/17592186044416 AWG	1.00
54. 1/35184372088832 AWG	1.00
55. 1/70368744177664 AWG	1.00
56. 1/140737488355328 AWG	1.00
57. 1/281474976710656 AWG	1.00
58. 1/562949953421312 AWG	1.00
59. 1/1125899906842624 AWG	1.00
60. 1/2251799813685248 AWG	1.00
61. 1/4503599627370496 AWG	1.00
62. 1/9007199254740992 AWG	1.00
63. 1/18014398509481984 AWG	1.00
64. 1/36028797018963968 AWG	1.00
65. 1/72057594037927936 AWG	1.00
66. 1/144115188075855872 AWG	1.00
67. 1/288230376151711744 AWG	1.00
68. 1/576460752303423488 AWG	1.00
69. 1/1152921504606846976 AWG	1.00
70. 1/2305843009213693952 AWG	1.00
71. 1/4611686018427387904 AWG	1.00
72. 1/9223372036854775808 AWG	1.00
73. 1/18446744073709551616 AWG	1.00
74. 1/36893488147419103232 AWG	1.00
75. 1/73786976294838206464 AWG	1.00
76. 1/147573952589676412928 AWG	1.00
77. 1/295147905179352825856 AWG	1.00
78. 1/590295810358705651712 AWG	1.00
79. 1/1180591620717411303424 AWG	1.00
80. 1/2361183241434822606848 AWG	1.00
81. 1/4722366482869645213696 AWG	1.00
82. 1/9444732965739290427392 AWG	1.00
83. 1/18889465931478580854784 AWG	1.00
84. 1/37778931862957161709568 AWG	1.00
85. 1/75557863725914323419136 AWG	1.00
86. 1/151115727451828646838272 AWG	1.00
87. 1/302231454903657293676544 AWG	1.00
88. 1/604462909807314587353088 AWG	1.00
89. 1/1208925819614629174706176 AWG	1.00
90. 1/2417851639229258349412352 AWG	1.00
91. 1/4835703278458516698824704 AWG	1.00
92. 1/9671406556917033397649408 AWG	1.00
93. 1/19342813113834066795298816 AWG	1.00
94. 1/38685626227668133590597632 AWG	1.00
95. 1/77371252455336267181195264 AWG	1.00
96. 1/154742504910672534362390528 AWG	1.00
97. 1/309485009821345068724781056 AWG	1.00
98. 1/618970019642690137449562112 AWG	1.00
99. 1/1237940039285380274899124224 AWG	1.00
100. 1/2475880078570760549798248448 AWG	1.00

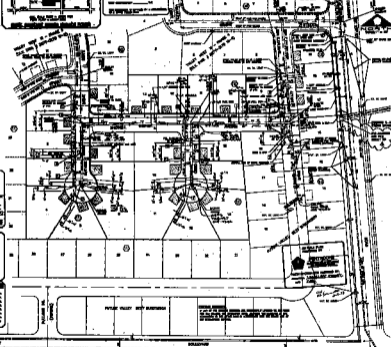


GENERAL NOTES

1. ALL WORK SHALL BE IN ACCORDANCE WITH THE CITY OF LOS ANGELES DEPARTMENT OF PUBLIC WORKS STANDARD SPECIFICATIONS FOR ELECTRICAL WORK.
2. ALL WORK SHALL BE IN ACCORDANCE WITH THE CITY OF LOS ANGELES DEPARTMENT OF PUBLIC WORKS STANDARD SPECIFICATIONS FOR ELECTRICAL WORK.
3. ALL WORK SHALL BE IN ACCORDANCE WITH THE CITY OF LOS ANGELES DEPARTMENT OF PUBLIC WORKS STANDARD SPECIFICATIONS FOR ELECTRICAL WORK.
4. ALL WORK SHALL BE IN ACCORDANCE WITH THE CITY OF LOS ANGELES DEPARTMENT OF PUBLIC WORKS STANDARD SPECIFICATIONS FOR ELECTRICAL WORK.
5. ALL WORK SHALL BE IN ACCORDANCE WITH THE CITY OF LOS ANGELES DEPARTMENT OF PUBLIC WORKS STANDARD SPECIFICATIONS FOR ELECTRICAL WORK.
6. ALL WORK SHALL BE IN ACCORDANCE WITH THE CITY OF LOS ANGELES DEPARTMENT OF PUBLIC WORKS STANDARD SPECIFICATIONS FOR ELECTRICAL WORK.
7. ALL WORK SHALL BE IN ACCORDANCE WITH THE CITY OF LOS ANGELES DEPARTMENT OF PUBLIC WORKS STANDARD SPECIFICATIONS FOR ELECTRICAL WORK.
8. ALL WORK SHALL BE IN ACCORDANCE WITH THE CITY OF LOS ANGELES DEPARTMENT OF PUBLIC WORKS STANDARD SPECIFICATIONS FOR ELECTRICAL WORK.
9. ALL WORK SHALL BE IN ACCORDANCE WITH THE CITY OF LOS ANGELES DEPARTMENT OF PUBLIC WORKS STANDARD SPECIFICATIONS FOR ELECTRICAL WORK.
10. ALL WORK SHALL BE IN ACCORDANCE WITH THE CITY OF LOS ANGELES DEPARTMENT OF PUBLIC WORKS STANDARD SPECIFICATIONS FOR ELECTRICAL WORK.

WIRE AND CABLE LIST & SCHEDULE

1. 14 AWG	1.00
2. 12 AWG	1.00
3. 10 AWG	1.00
4. 8 AWG	1.00
5. 6 AWG	1.00
6. 4 AWG	1.00
7. 3 AWG	1.00
8. 2 AWG	1.00
9. 1 AWG	1.00
10. 1/2 AWG	1.00
11. 1/4 AWG	1.00
12. 1/8 AWG	1.00
13. 1/16 AWG	1.00
14. 1/32 AWG	1.00
15. 1/64 AWG	1.00
16. 1/128 AWG	1.00
17. 1/256 AWG	1.00
18. 1/512 AWG	1.00
19. 1/1024 AWG	1.00
20. 1/2048 AWG	1.00
21. 1/4096 AWG	1.00
22. 1/8192 AWG	1.00
23. 1/16384 AWG	1.00
24. 1/32768 AWG	1.00
25. 1/65536 AWG	1.00
26. 1/131072 AWG	1.00
27. 1/262144 AWG	1.00
28. 1/524288 AWG	1.00
29. 1/1048576 AWG	1.00
30. 1/2097152 AWG	1.00
31. 1/4194304 AWG	1.00
32. 1/8388608 AWG	1.00
33. 1/16777216 AWG	1.00
34. 1/33554432 AWG	1.00
35. 1/67108864 AWG	1.00
36. 1/134217728 AWG	1.00
37. 1/268435456 AWG	1.00
38. 1/536870912 AWG	1.00
39. 1/1073741824 AWG	1.00
40. 1/2147483648 AWG	1.00
41. 1/4294967296 AWG	1.00
42. 1/8589934592 AWG	1.00
43. 1/17179869184 AWG	1.00
44. 1/34359738368 AWG	1.00
45. 1/68719476736 AWG	1.00
46. 1/137438953472 AWG	1.00
47. 1/274877906944 AWG	1.00
48. 1/549755813888 AWG	1.00
49. 1/1099511627776 AWG	1.00
50. 1/2199023255552 AWG	1.00
51. 1/4398046511104 AWG	1.00
52. 1/8796093022208 AWG	1.00
53. 1/17592186044416 AWG	1.00
54. 1/35184372088832 AWG	1.00
55. 1/70368744177664 AWG	1.00
56. 1/140737488355328 AWG	1.00
57. 1/281474976710656 AWG	1.00
58. 1/562949953421312 AWG	1.00
59. 1/1125899906842624 AWG	1.00
60. 1/2251799813685248 AWG	1.00
61. 1/4503599627370496 AWG	1.00
62. 1/9007199254740992 AWG	1.00
63. 1/18014398509481984 AWG	1.00
64. 1/36028797018963968 AWG	1.00
65. 1/72057594037927936 AWG	1.00
66. 1/144115188075855872 AWG	1.00
67. 1/288230376151711744 AWG	1.00
68. 1/576460752303423488 AWG	1.00
69. 1/1152921504606846976 AWG	1.00
70. 1/2305843009213693952 AWG	1.00
71. 1/4611686018427387904 AWG	1.00
72. 1/9223372036854775808 AWG	1.00
73. 1/18446744073709551616 AWG	1.00
74. 1/36893488147419103232 AWG	1.00
75. 1/73786976294838206464 AWG	1.00
76. 1/147573952589676412928 AWG	1.00
77. 1/295147905179352825856 AWG	1.00
78. 1/590295810358705651712 AWG	1.00
79. 1/1180591620717411303424 AWG	1.00
80. 1/2361183241434822606848 AWG	1.00
81. 1/4722366482869645213696 AWG	1.00
82. 1/9444732965739290427392 AWG	1.00
83. 1/18889465931478580854784 AWG	1.00
84. 1/37778931862957161709568 AWG	1.00
85. 1/75557863725914323419136 AWG	1.00
86. 1/151115727451828646838272 AWG	1.00
87. 1/302231454903657293676544 AWG	1.00
88. 1/604462909807314587353088 AWG	1.00
89. 1/1208925819614629174706176 AWG	1.00
90. 1/2417851639229258349412352 AWG	1.00
91. 1/4835703278458516698824704 AWG	1.00
92. 1/9671406556917033397649408 AWG	1.00
93. 1/19342813113834066795298816 AWG	1.00
94. 1/38685626227668133590597632 AWG	1.00
95. 1/77371252455336267181195264 AWG	1.00
96. 1/154742504910672534362390528 AWG	1.00
97. 1/309485009821345068724781056 AWG	1.00
98. 1/618970019642690137449562112 AWG	1.00
99. 1/1237940039285380274899124224 AWG	1.00
100. 1/2475880078570760549798248448 AWG	1.00



PENTACORE

1000 PENTACORE BLVD
LOS ANGELES, CA 90015

MALBY & BROWN
ELECTRICAL ENGINEERS
1000 PENTACORE BLVD - PHASE 2
ELECTRICAL AND MECHANICAL PLAN