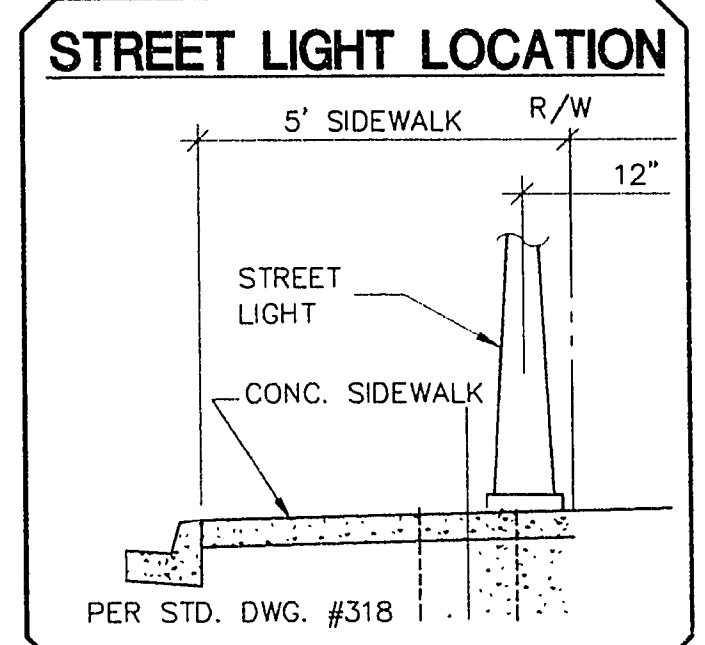
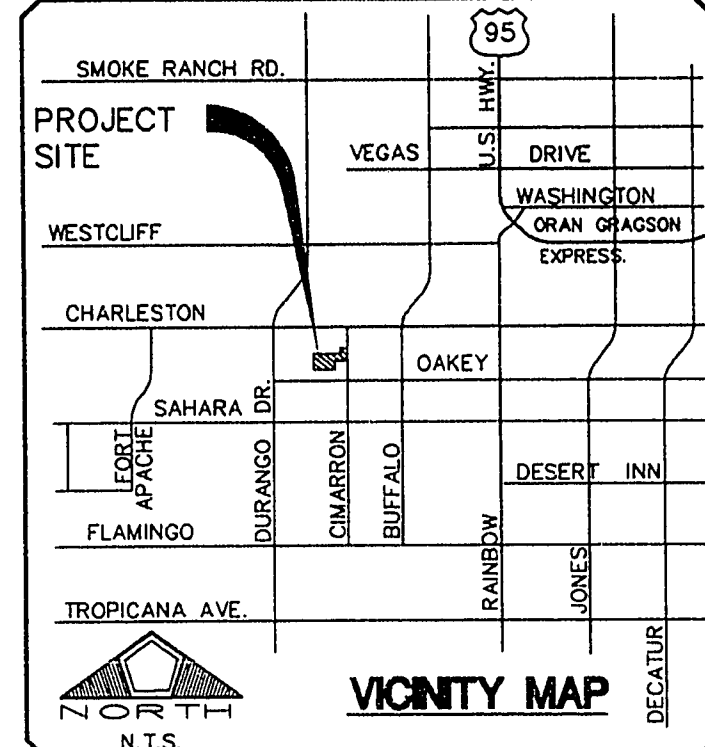


**L.V.V.W.D. WATER NOTES**

- NO WORK SHALL BEGIN UNTIL THE WATER PLANS HAVE BEEN RELEASED FOR CONSTRUCTION BY THE LVVWD. FOLLOWING WATER PLAN APPROVAL, 48 HOUR NOTICE SHALL BE GIVEN TO THE LVVWD COMMUNICATIONS SUPPORT CENTER (258-7171) PRIOR TO THE START OF CONSTRUCTION. NOTICE MUST BE GIVEN BY 2:00 P.M. THE BUSINESS DAY PRIOR TO A LVVWD INSPECTION.
- ALL WORK SHALL CONFORM TO LVVWD STANDARD PLATES, DRAWINGS, AND SPECIFICATIONS, LATEST EDITION.
- ALL WORK, EXCEPT AS MODIFIED BY THESE PLANS OR BY NOTE 2, SHALL BE DONE IN ACCORDANCE WITH THE MOST CURRENT DRAFT OR EDITION OF THE UNIFORM STANDARD SPECIFICATIONS FOR PUBLIC WORKS CONSTRUCTION OFFSITE IMPROVEMENT, CLARK COUNTY AREA.
- A SINGLE PIPE MATERIAL SHALL BE USED THROUGHOUT THE PROJECT UNLESS OTHERWISE APPROVED BY THE LVVWD.
- ALL SERVICE LATERALS TWO (2) INCHES IN DIAMETER AND SMALLER SHALL BE COPPER TUBING WITH LVVWD APPROVED SERVICE SADDLES.
- ALL WATER METER BOXES SHALL BE LOCATED OUTSIDE OF DRIVEWAY AREAS.
- ALL VALVES SHALL BE LOCATED OUTSIDE OF DRIVEWAYS, VALLEY AND CURB GUTTERS.
- THE FOLLOWING REQUIREMENTS MUST BE MET IN THE EVENT A WATER LINE AND SANITARY OR STORM SEWER LINE CROSS:
  - A MINIMUM EIGHTEEN (18) INCH VERTICAL SEPARATION (OUTSIDE TO OUTSIDE) MUST BE MAINTAINED WHEN THE WATER LINE IS INSTALLED OVER THE SANITARY OR STORM SEWER LINE. IF THE VERTICAL SEPARATION CANNOT BE MAINTAINED OR THE WATER LINE MUST BE PLACED UNDER THE SANITARY OR STORM SEWER LINE, THE SANITARY OR STORM SEWER LINE MUST BE CONSTRUCTED WITH ONE OF THE FOLLOWING OR, AS SHOWN ON THESE PLANS:
    - POTABLE WATER SUPPLY QUALITY MATERIAL.
    - ENCASEMENT, WITH FOUR (4) INCH CONCRETE (MINIMUM).
    - SLEEVING WITH POTABLE WATER SUPPLY QUALITY PIPE.
 EACH PROVISION MUST EXTEND ALONG THE SANITARY OR STORM SEWER, ON EITHER SIDE OF THE MAIN, A MINIMUM 10 FOOT DISTANCE PERPENDICULAR TO THE WATER MAIN EXTERIOR.
- WARNING TAPE SHALL BE REQUIRED OVER ALL MAINS, ALL SIX (6) INCH DIAMETER AND LARGER SERVICE LATERALS, AND ANY SERVICE LATERAL NOT INSTALLED PERPENDICULAR TO THE MAIN IN ACCORDANCE WITH STANDARD PLATE NO. 27.
- ALL WATER FACILITIES SHALL BE FILLED, DISINFECTED, PRESSURE TESTED, FLUSHED, FILLED AND AN ACCEPTABLE WATER SAMPLE OBTAINED, PRIOR TO CONNECTION TO THE LVVWD'S DISTRIBUTION SYSTEM.
- THE CONTRACTOR MUST OBTAIN ALL METERS TWO (2) INCHES AND SMALLER FROM LVVWD CENTRAL STORES. TELEPHONE 258-3152 FORTY-EIGHT (48) HOURS PRIOR TO PICKUP.
- CONSTRUCTION MAY INTERRUPT SERVICE, WITH LVVWD APPROVAL AND PROPER NOTIFICATION, BETWEEN THE HOURS OF 10 PM AND 6 AM, SUNDAY THROUGH THURSDAY. CIRCUMSTANCES MAY REQUIRE TEMPORARY SERVICE FEEDS BE INSTALLED, WITHOUT LVVWD REIMBURSEMENT. ANY TEMPORARY SERVICE FEED MUST HAVE PRIOR LVVWD APPROVAL.
- ALL WATER FACILITY CONSTRUCTION MATERIALS USED MUST BE LISTED ON THE LVVWD'S APPROVED MATERIALS AND MANUFACTURERS LISTING FOR NEW FACILITIES, LATEST REVISION, OR SPECIFICALLY APPROVED ON THESE PLANS.

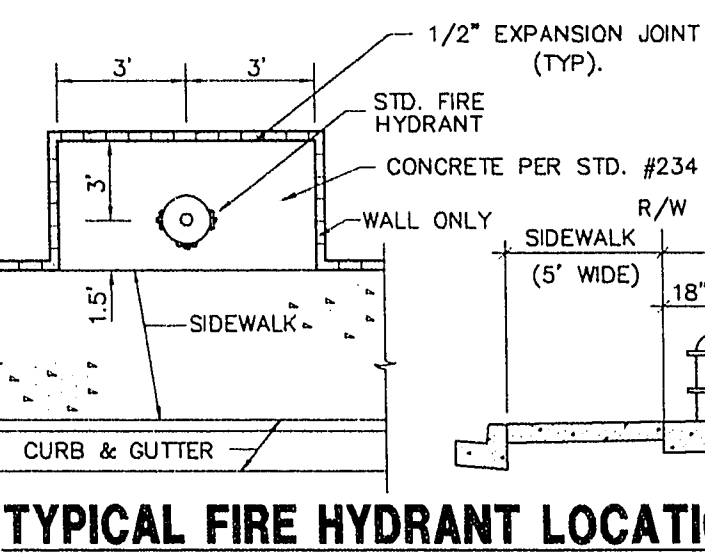
6/20/94



**ESTIMATE OF WATER QUANTITIES**

STD. F.H. W/6" C.V. & 6" LATERAL	3 EA
6" PVC	1064 LF
8" PVC	172 LF
6" GATE VALVE	1 EA
8" GATE VALVE	1 EA
1" WATER SERVICES	23 EA
3/4" WATER METER (FROM LVVWD)	23 EA
METER BOX	23 EA
2" BLOW-OFF W/ CAP	3 EA

NOTE: THESE QUANTITIES ARE ESTIMATES ONLY. CONTRACTOR SHALL VERIFY.



**FITTINGS LEGEND**

1	6" PVC
2	8" PVC
3	6" GATE VALVE
4	8" GATE VALVE
5	8" X 6" TEE
6	8" X 6" TEE
7	2" BLOW-OFF ASSEMBLY W/ CAP
8	STD. FIRE HYDRANT ASSEMBLY

**TRAFFIC AND ST. LIGHT & QUANTITIES**

25 MPH SPEED LIMIT SIGN - R2-1	1 EA
STOP SIGN - R1-1	1 EA
STREET NAME SIGN (PER STD. DWG #250)	3 EA
END OF ROAD MARKER	6 EA
STREET LIGHT (100 WATT H.P.S)	7 EA
STREET LIGHT (200 WATT H.P.S)	1 EA
NO. 3-1/2 PULL BOX	3 EA
1-1/4" PVC CONDUIT & WIRE	1300 LF

**LAS VEGAS FIRE DEPARTMENT**

FIRE FLOW REQUIREMENT IS 1,500 GALLONS PER MINUTE AT 20 POUNDS PER SQUARE INCH RESIDUAL.

BASED ON:  
 SQUARE FOOTAGE \_\_\_\_\_ 2116  
 HEIGHT \_\_\_\_\_ TWO-STORY  
 TYPE OF CONSTRUCTION \_\_\_\_\_ TYPE 5  
 SPRINKLER SYSTEM \_\_\_\_\_ NONE  
 OCCUPANCY \_\_\_\_\_ SINGLE-FAMILY  
 ROOF CONSTRUCTION \_\_\_\_\_ TILE

THIS SUBDIVISION IS SUPPLIED BY 2 CONNECTIONS TO A LVVWD FEEDER MAIN

**STREET LIGHTING NOTES**

- ALL STREET LIGHTING INSTALLATIONS EXCEPT AS NOTED ON THE STREET LIGHTING PLANS SHALL CONFORM TO THE IMPROVEMENT STANDARDS, DEPARTMENT OF PUBLIC WORKS, CLARK COUNTY, NEVADA AND THE UNIFORM STANDARD SPECIFICATIONS FOR PUBLIC WORKS CONSTRUCTION, OFF-SITE IMPROVEMENTS, CLARK COUNTY AREA, NEVADA, (LATEST EDITION).
- ALL STREET LIGHT POLES SHALL BE GALVANIZED.
- ALL HANDHOLE COVERS MUST BE INSTALLED, POLE CAPS POURED, AND PULLBOX LIDS BOLTED DOWN PRIOR TO ENERGIZING CIRCUIT. ALL WIRE MUST HAVE THW INSULATION.

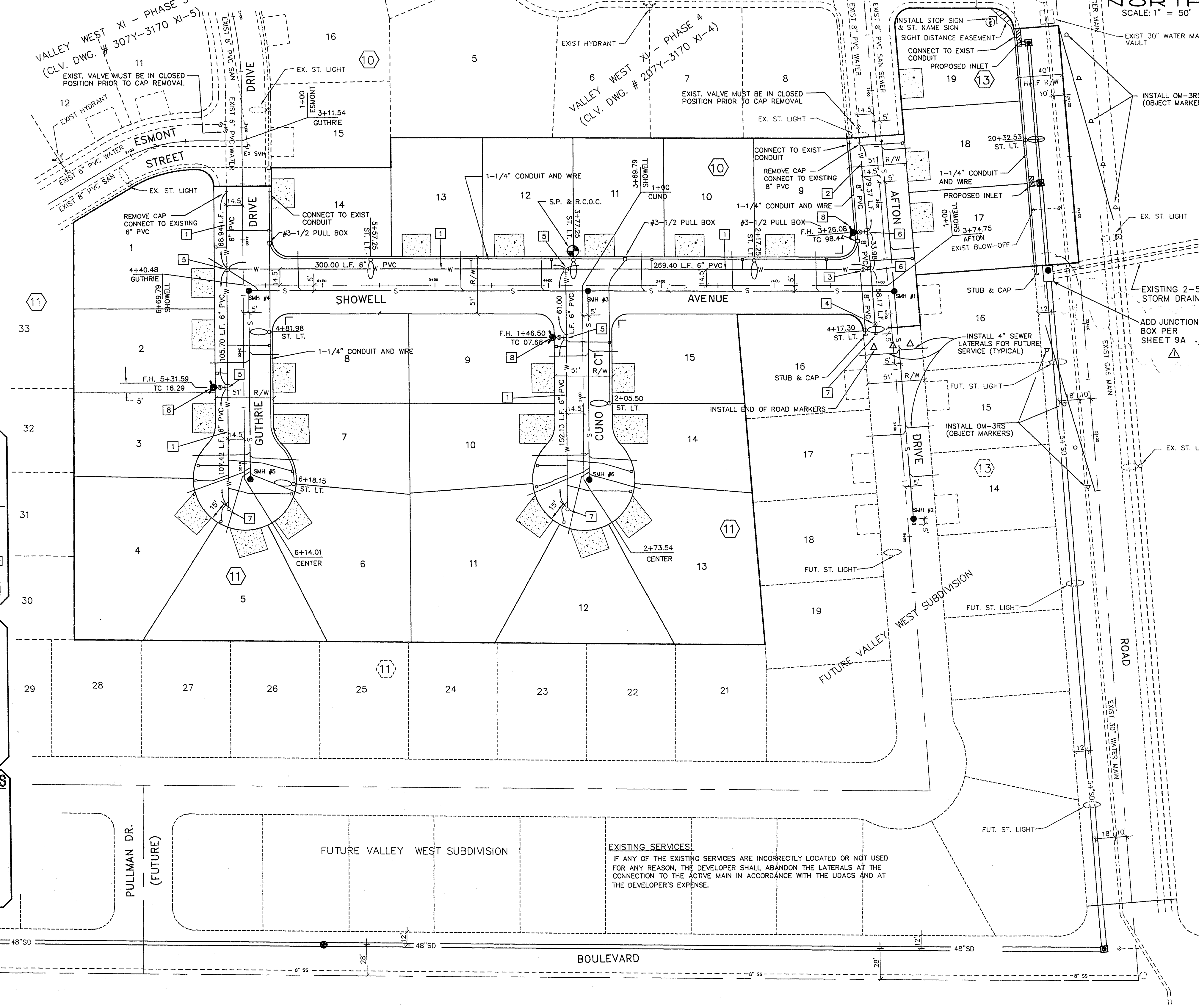
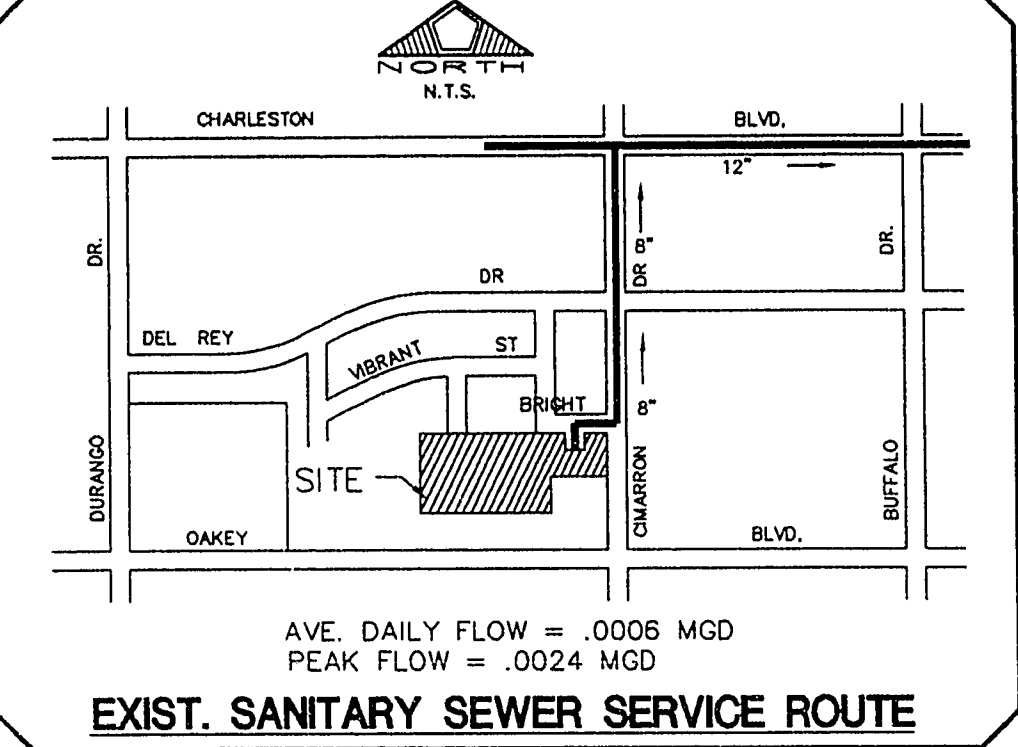
LAS VEGAS VALLEY WATER DISTRICT  
 DATE: 8-17-95  
 DESIGNED BY: [Signature]  
 CHECKED BY: [Signature]  
 DATE: 8-2-95  
 DATE: 8-16-95

NEVADA POWER COMPANY  
 DATE: [Signature]

THIS APPROVAL IS FOR THE PLACEMENT AND CLEARANCE OF STREET LIGHT AND SIGNAL LIGHT INSTALLATIONS ONLY.

Call before you Dig.  
 1-800-227-2600  
 (UNDERGROUND SERVICE ALERT CALL)

Avoid cutting underground utility lines. It's costly.



RECOMMENDED:

DATE: 8/1/95	DESIGNED BY: [Signature]
DRAWN BY: [Signature]	CHECKED BY: C.O.S.
DESIGNED BY: [Signature]	JOB NO.: 0143.0302
SCALE: 1"=50'	

**PENTACORE**  
 Engineering, Inc.  
 6763 West Charleston Boulevard  
 Las Vegas, Nevada 89102  
 (702) 258-0115

BAILEY & MCGAH  
 VALLEY WEST XI - PHASE 6  
 UTILITY AND TRAFFIC PLAN  
 SHEET  
**3**