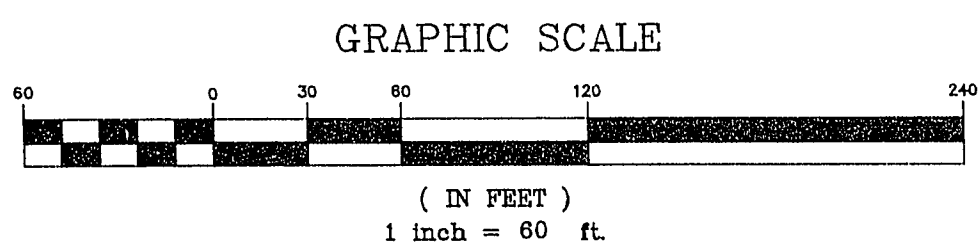


VICINITY MAP
N. T. S.

NOTE:
FOR INFORMATION ON EXISTING SEWERS REFER TO VALLEY WEST XI PHASE 3

QUANTITIES

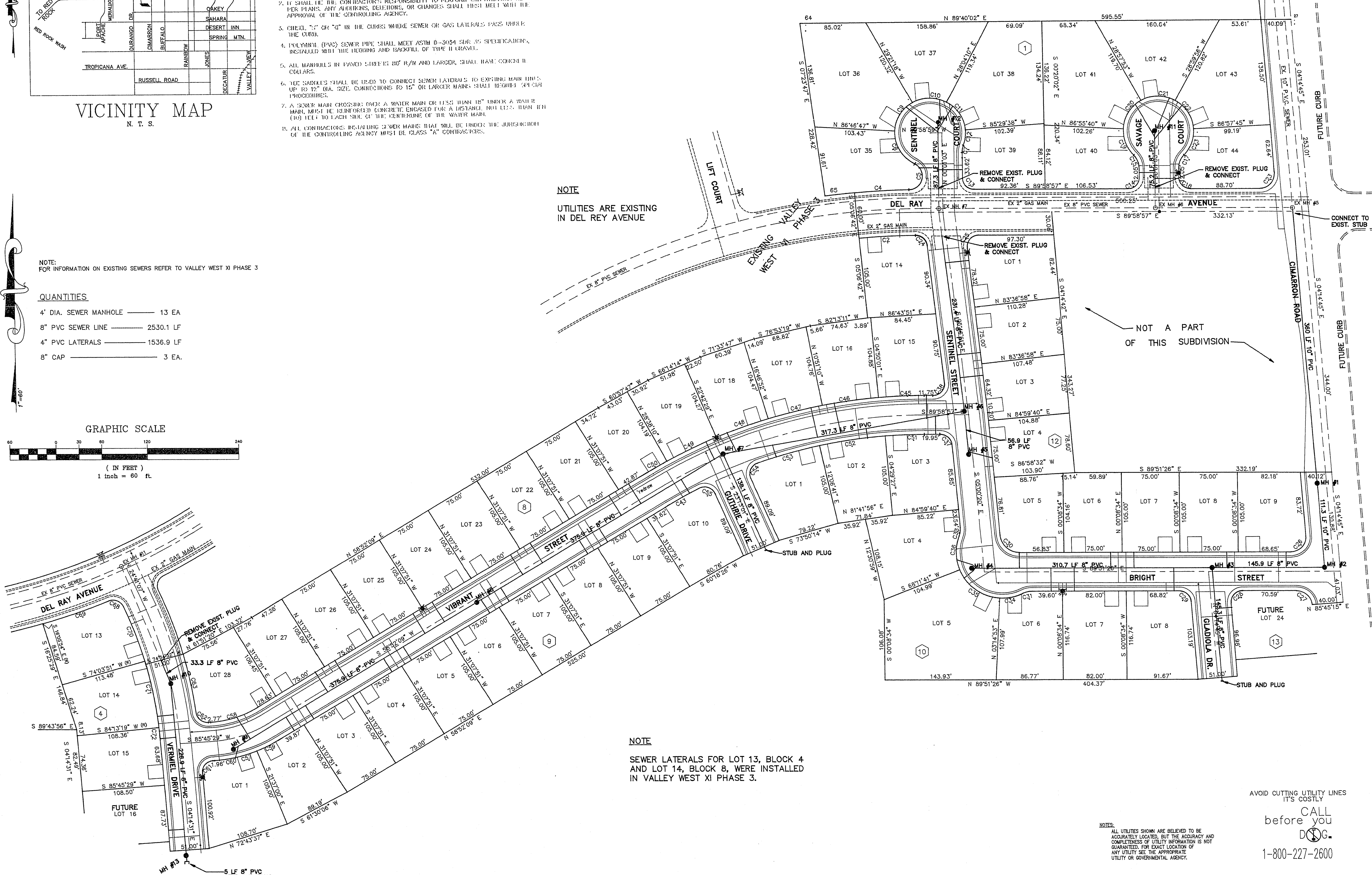
- 4" DIA. SEWER MANHOLE ——— 13 EA
- 8" PVC SEWER LINE ——— 2530.1 LF
- 4" PVC LATERALS ——— 1536.9 LF
- 8" CAP ——— 3 EA.



CITY OF LAS VEGAS SEWER NOTES

1. ALL CONSTRUCTION AND MATERIALS SHALL BE IN ACCORDANCE WITH THE LATEST EDITION OF THE DESIGN & CONSTRUCTION STANDARDS FOR WASTE WATER COLLECTION SYSTEMS AND THE UNIFORM STANDARD SPECIFICATIONS FOR PUBLIC WORKS CONSTRUCTION. ALL IMPROVEMENTS, EXCEPT WHERE SHOWN OTHERWISE, SHALL BE IN ACCORDANCE WITH THE UNIFORM STANDARD SPECIFICATIONS. IT SHALL BE THE RESPONSIBILITY OF THE CONTRACTOR TO BE AWARE OF THE CONTENTS OF THE ABOVE SPECIFICATION BOOKS.
2. IT SHALL BE THE CONTRACTOR'S RESPONSIBILITY TO PERFORM CONSTRUCTION AS PER PLANS, ANY ADDITIONS, DELETIONS, OR CHANGES SHALL FIRST MEET WITH THE APPROVAL OF THE CONTROLLING AGENCY.
3. CHECK "T" OR "C" IN THE CURBS WHERE SEWER OR GAS LATERALS PASS UNDER THE CURB.
4. POLYETHYLENE (PE) SEWER PIPE SHALL MEET ASTM D-3034 FOR 30 SPECIFICATION, INSTALLED WITH THE bedding and backfill of type H gravel.
5. ALL MANHOLES IN EXISTING STREETS 80' R/W AND LARGER SHALL HAVE CONCRETE COLLARS.
6. THE MARKERS SHALL BE USED TO CONNECT SEWER LATERALS TO EXISTING MAIN LINES. UP TO 12" DIA. SIZE CONNECTIONS TO 16" OR LARGER MAINS SHALL REQUIRE SPECIAL PROCEDURES.
7. A SEWER MAIN CROSSING OVER A WATER MAIN OR LESS THAN 18" UNDER A WATER MAIN, MUST BE SUPPORTED CONCRETE ENCASED FOR A MINIMUM 10 FEET. FROM THE END TO EACH SIDE OF THE CENTERLINE OF THE WATER MAIN.
8. ALL CONTRACTORS, INCLUDING SEWER MARKS THAT WILL BE UNDER THE JURISDICTION OF THE CONTROLLING AGENCY MUST BE CLASS "A" CONTRACTORS.

NOTE
UTILITIES ARE EXISTING
IN DEL REY AVENUE



NOTE
SEWER LATERALS FOR LOT 13, BLOCK 4
AND LOT 14, BLOCK 8, WERE INSTALLED
IN VALLEY WEST XI PHASE 3.

AVOID CUTTING UTILITY LINES
IT'S COSTLY
CALL
before you
DIG.
1-800-227-2600

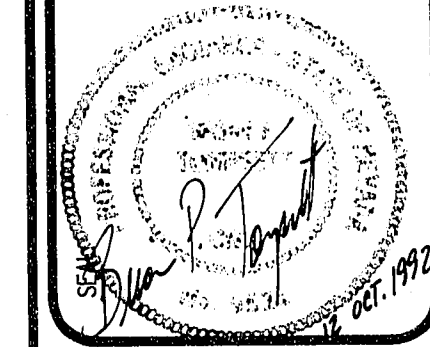
NOTES:
ALL UTILITIES SHOWN ARE BELIEVED TO BE
ACCURATELY LOCATED, BUT THE ACCURACY AND
COMPLETENESS OF UTILITY INFORMATION IS NOT
WARRANTED FOR EXACT LOCATION OF
ANY UTILITY SEE THE APPROPRIATE
UTILITY OR GOVERNMENTAL AGENCY.

JAS CASHDAN
LAND SURVEYING
CIVIL ENGINEERING
STRUCTURAL ENGINEERING
FORENSIC ENGINEERING

844 EAST SAHARA
LAS VEGAS, NEVADA 89104
702-735-7885
702-735-6282

VALLEY WEST XI
PHASE - 4
LAS VEGAS, NEVADA
MASTER SEWER PLAN

NO.	DATE	REVISION	APPROVAL



DATE	JULY 26, 1991
JOB NO.	91818
SCALE	1" = 60'
DRAWN	MRG
CHECKED	COS
CHECKED	EJF
SHEET	

29-8-36