

P: 2291-1, LMP-PH12291-1C-DWG Thu Feb 25 09:28:15 1999 SALCID00

COURSE TABLE RADIAL LINE TABLE CURVE TABLE

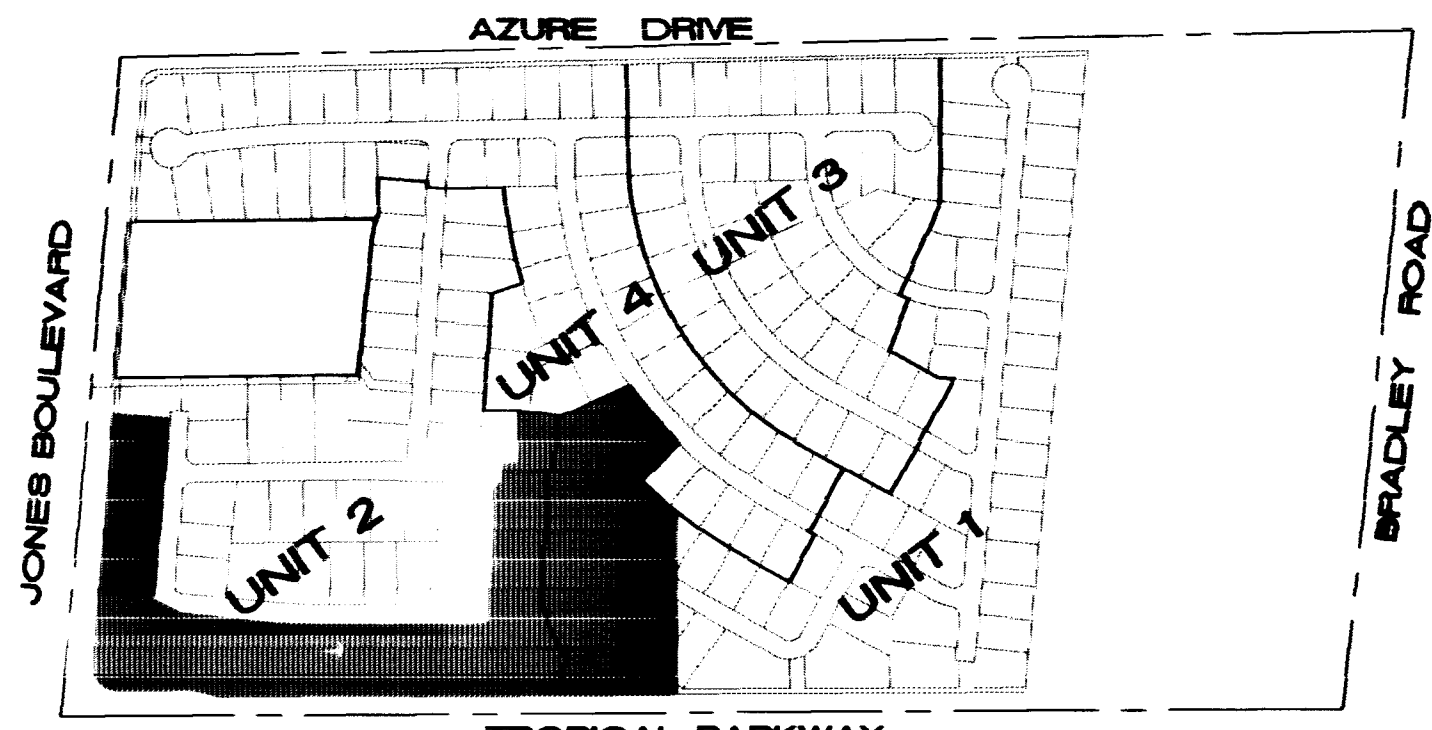
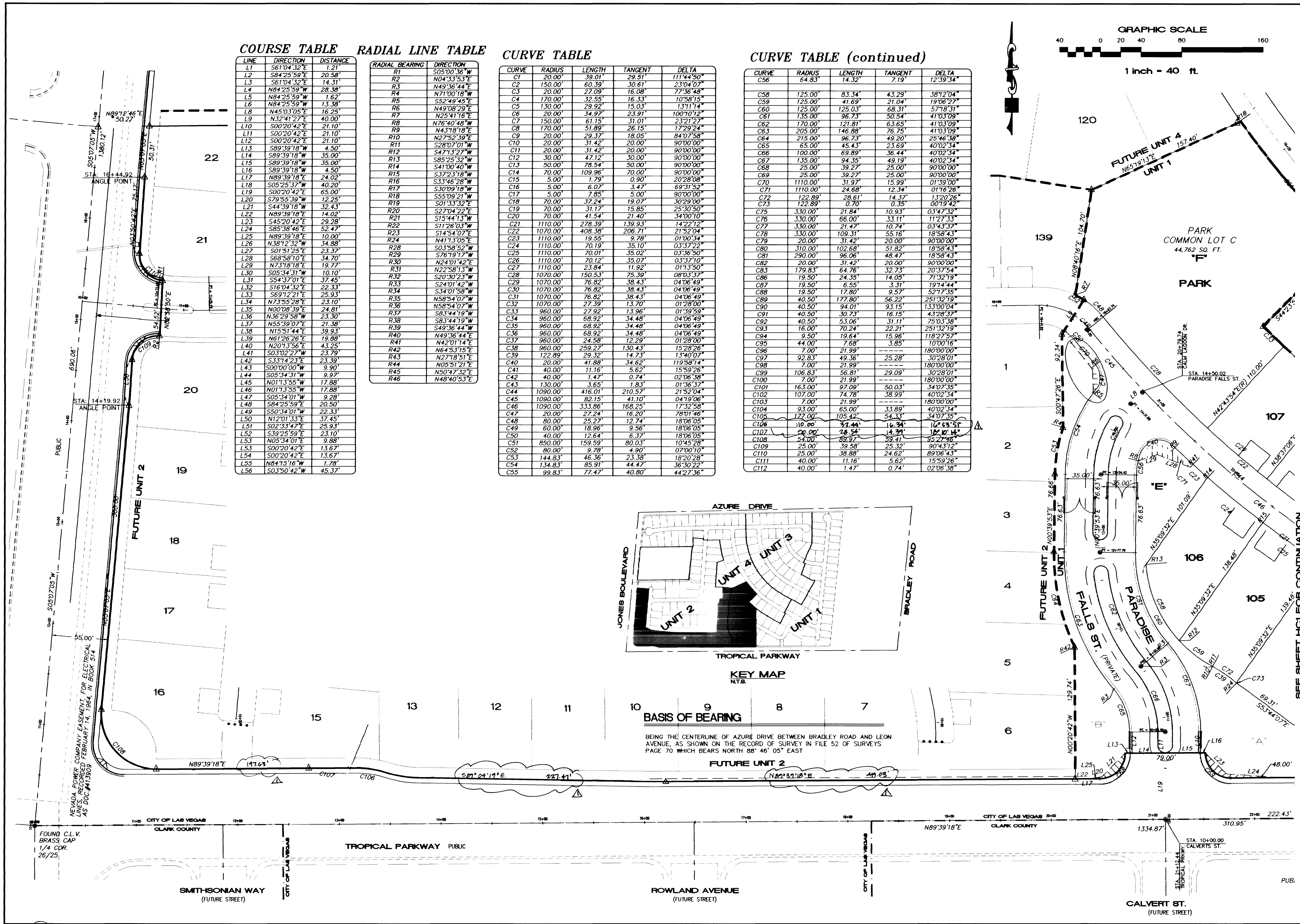
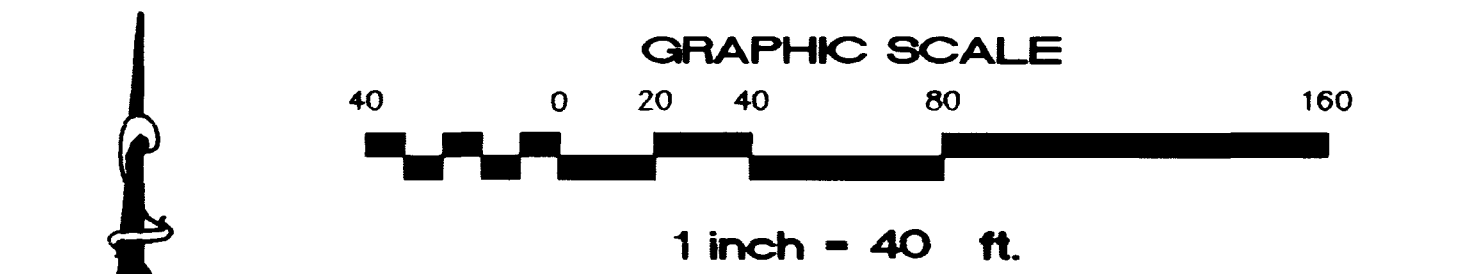
LINE	DIRECTION	DISTANCE	RADIAL BEARING	DIRECTION
L1	S61°04'32"E	1.21	R1	S05°00'36"W
L2	S84°25'59"E	20.58	R2	N04°33'53"E
L3	S61°04'32"E	14.31	R3	N49°36'44"E
L4	N84°25'59"W	28.36	R4	N71°00'18"W
L5	N84°25'59"W	1.62	R5	S52°49'45"E
L6	N84°25'59"W	13.38	R6	N49°08'29"E
L7	N45°03'05"E	16.25	R7	N25°41'16"E
L8	N32°41'27"E	40.00	R8	N76°40'48"W
L9	S00°20'42"E	21.10	R9	N43°18'18"E
L10	S00°20'42"E	21.10	R10	N27°52'39"E
L11	S00°20'42"E	21.10	R11	S28°07'01"W
L12	S00°20'42"E	21.10	R12	S47°13'27"W
L13	S89°39'18"W	4.50	R13	S85°25'32"W
L14	S89°39'18"W	35.00	R14	S41°00'40"W
L15	S89°39'18"W	35.00	R15	S37°23'18"W
L16	S89°39'18"W	4.50	R16	S33°46'28"W
L17	N89°39'18"E	24.02	R17	S30°09'18"W
L18	S05°25'37"W	40.20	R18	S55°09'21"W
L19	S00°20'42"E	65.00	R19	S01°33'32"E
L20	S79°55'39"W	12.25	R20	S27°04'22"E
L21	S44°39'18"W	32.43	R21	S11°26'03"W
L22	N89°39'18"E	14.02	R22	S14°54'07"E
L23	S45°20'42"E	29.28	R23	N41°13'05"E
L24	S85°38'46"E	52.47	R24	S03°58'52"W
L25	N89°39'18"E	10.00	R25	S76°19'17"W
L26	N38°12'32"W	34.88	R26	N24°01'42"E
L27	S01°51'25"E	23.37	R27	N22°58'13"W
L28	S68°58'10"E	34.70	R28	S20°30'23"W
L29	N73°18'18"E	19.77	R29	S24°01'42"W
L30	S05°34'31"W	10.10	R30	S58°54'07"W
L31	S54°37'01"E	37.45	R31	N58°54'07"W
L32	S16°04'32"E	22.33	R32	S83°44'19"W
L33	S69°12'21"E	25.93	R33	S83°44'19"W
L34	N73°55'28"E	23.10	R34	S49°36'44"W
L35	N00°08'39"E	24.81	R35	N49°36'44"E
L36	N36°29'58"W	23.30	R36	N42°01'14"E
L37	N55°39'07"E	21.38	R37	N64°53'15"E
L38	N15°51'44"E	39.93	R38	N27°18'51"E
L39	N61°26'26"E	19.89	R39	N05°51'21"E
L40	N201°3'56"E	43.25	R40	N50°47'32"E
L41	S03°02'27"W	23.79	R41	N48°40'53"E
L42	S33°14'23"E	23.39	R42	
L43	S00°00'00"W	9.90	R43	
L44	S05°34'31"W	9.97	R44	
L45	N01°13'55"W	17.88	R45	
L46	N01°13'55"W	17.88	R46	
L47	S05°34'01"W	9.28		
L48	S84°25'59"E	20.50		
L49	S50°34'01"W	22.33		
L50	N12°01'33"E	37.45		
L51	S02°33'47"E	25.93		
L52	S39°25'59"E	23.10		
L53	N05°34'01"E	9.88		
L54	S00°20'42"E	13.67		
L55	N84°15'16"W	1.78		
L56	S03°50'42"W	45.37		

CURVE TABLE

CURVE	RADIUS	LENGTH	TANGENT	DELTA
C1	20.00'	39.01'	29.51'	111°44'50"
C2	150.00'	60.39'	30.61'	23°04'07"
C3	20.00'	27.09'	16.08'	77°36'48"
C4	170.00'	32.55'	16.33'	10°58'15"
C5	130.00'	29.92'	15.03'	131°11'14"
C6	20.00'	34.97'	23.91'	100°10'12"
C7	150.00'	61.15'	31.01'	23°21'27"
C8	170.00'	51.89'	26.15'	17°29'24"
C9	20.00'	29.37'	18.05'	84°07'58"
C10	20.00'	31.42'	20.00'	90°00'00"
C11	20.00'	31.42'	20.00'	90°00'00"
C12	30.00'	47.12'	30.00'	90°00'00"
C13	90.00'	78.54'	50.00'	90°00'00"
C14	70.00'	109.96'	70.00'	90°00'00"
C15	5.00'	1.79'	0.90'	20°28'08"
C16	5.00'	6.07'	3.47'	69°31'52"
C17	5.00'	7.85'	5.00'	90°00'00"
C18	70.00'	37.24'	19.07'	30°29'00"
C19	70.00'	31.17'	15.85'	25°30'50"
C20	70.00'	41.54'	21.40'	34°00'10"
C21	1110.00'	278.39'	139.93'	14°22'12"
C22	1070.00'	408.38'	206.71'	21°52'04"
C23	1110.00'	19.55'	9.78'	01°00'34"
C24	1110.00'	70.19'	35.10'	03°37'22"
C25	1110.00'	70.01'	35.02'	03°36'50"
C26	1110.00'	70.12'	35.07'	03°37'10"
C27	1110.00'	23.84'	11.92'	01°13'50"
C28	1070.00'	150.53'	75.39'	08°03'37"
C29	1070.00'	76.82'	38.43'	04°06'49"
C30	1070.00'	76.82'	38.43'	04°06'49"
C31	1070.00'	76.82'	38.43'	04°06'49"
C32	1070.00'	27.39'	13.70'	01°28'00"
C33	960.00'	27.92'	13.96'	01°39'59"
C34	960.00'	68.92'	34.48'	04°06'49"
C35	960.00'	68.92'	34.48'	04°06'49"
C36	960.00'	68.92'	34.48'	04°06'49"
C37	960.00'	24.58'	12.29'	01°28'00"
C38	960.00'	259.27'	130.43'	15°28'26"
C39	122.89'	29.32'	14.73'	13°40'07"
C40	20.00'	41.88'	34.62'	119°58'14"
C41	40.00'	11.16'	5.62'	15°59'26"
C42	40.00'	1.47'	0.74'	02°06'38"
C43	130.00'	3.65'	1.83'	01°36'37"
C44	1090.00'	416.01'	210.57'	21°52'04"
C45	1090.00'	82.15'	41.10'	04°19'06"
C46	1090.00'	333.86'	168.25'	17°32'58"
C47	20.00'	27.24'	16.20'	78°01'46"
C48	80.00'	25.27'	12.74'	18°06'05"
C49	60.00'	18.96'	9.56'	18°06'05"
C50	40.00'	12.64'	6.37'	18°06'05"
C51	850.00'	159.59'	80.03'	10°45'28"
C52	80.00'	9.78'	4.90'	07°00'10"
C53	144.83'	46.36'	23.38'	18°20'28"
C54	134.83'	85.91'	44.47'	36°30'22"
C55	99.83'	77.47'	40.80'	44°27'36"

CURVE TABLE (continued)

CURVE	RADIUS	LENGTH	TANGENT	DELTA
C56	64.83'	14.32'	7.19'	12°39'34"
C58	125.00'	83.34'	43.29'	38°12'04"
C59	125.00'	41.69'	21.04'	19°06'27"
C60	125.00'	125.03'	68.31'	57°18'31"
C61	135.00'	96.73'	50.54'	41°03'09"
C62	170.00'	121.81'	63.65'	41°03'09"
C63	205.00'	146.88'	76.75'	41°03'09"
C64	215.00'	96.73'	49.20'	25°46'38"
C65	65.00'	45.43'	23.69'	40°02'34"
C66	100.00'	69.89'	36.44'	40°02'34"
C67	135.00'	94.35'	49.19'	40°02'34"
C68	25.00'	39.27'	25.00'	90°00'00"
C69	25.00'	39.27'	25.00'	90°00'00"
C70	1110.00'	31.97'	15.99'	01°39'00"
C71	1110.00'	24.68'	12.34'	01°16'26"
C72	122.89'	28.61'	14.37'	13°20'26"
C73	122.89'	0.70'	0.35'	00°19'42"
C75	330.00'	21.84'	10.93'	03°47'32"
C76	330.00'	66.00'	33.11'	11°27'33"
C77	330.00'	21.47'	10.74'	03°43'37"
C78	330.00'	109.31'	55.16'	18°58'43"
C79	20.00'	31.42'	20.00'	90°00'00"
C80	310.00'	102.68'	51.82'	18°58'43"
C81	290.00'	96.06'	48.47'	18°58'43"
C82	20.00'	31.42'	20.00'	90°00'00"
C83	179.83'	64.76'	32.73'	20°37'54"
C86	19.50'	24.35'	14.05'	71°32'19"
C87	19.50'	6.55'	3.31'	19°14'44"
C88	19.50'	17.80'	9.57'	52°17'35"
C89	40.50'	177.80'	56.22'	25°13'21"
C90	40.50'	94.01'	93.15'	133°00'04"
C91	40.50'	30.73'	16.15'	43°28'37"
C92	40.50'	53.06'	31.11'	75°03'38"
C93	16.00'	70.24'	22.21'	25°13'21"
C94	9.50'	19.64'	15.96'	118°27'57"
C95	44.00'	7.68'	3.85'	10°00'16"
C96	7.00'	21.99'	---	180°00'00"
C97	92.83'	49.36'	25.28'	30°28'01"
C98	7.00'	21.99'	---	180°00'00"
C99	106.83'	56.81'	29.09'	30°28'01"
C100	7.00'	21.99'	---	180°00'00"
C101	163.00'	97.09'	50.03'	34°07'35"
C102	107.00'	74.78'	38.99'	40°02'34"
C103	7.00'	21.99'	---	180°00'00"
C104	93.00'	65.00'	33.89'	40°02'34"
C105	177.00'	105.42'	54.33'	34°07'35"
C106	110.00'	34.44'	16.24'	14°55'51"
C107	20.00'	24.54'	14.29'	18°10'14"
C108	54.00'	89.97'	59.41'	95°27'56"
C109	25.00'	39.58'	25.32'	90°43'12"
C110	25.00'	38.88'	24.62'	89°06'43"
C111	40.00'	11.16'	5.62'	15°59'26"
C112	40.00'	1.47'	0.74'	02°06'38"



BASIS OF BEARING
 BEING THE CENTERLINE OF AZURE DRIVE BETWEEN BRADLEY ROAD AND LEON AVENUE, AS SHOWN ON THE RECORD OF SURVEY IN FILE 52 OF SURVEYS PAGE 70 WHICH BEARS NORTH 88° 46' 05" EAST

HORIZONTAL CONTROL

TROPICAL/JONES - UNIT 1
A.K.A. PARADISE FALLS - UNIT 1
CITY OF LAS VEGAS, NEVADA

QUALITY CONTROL BY: [Signature]
 DESIGNED BY: [Signature]
 CHECKED BY: [Signature]

SCALE: 1" = 40'

DRAWING NO. **2291-1**

HC3
 7 of 31
 107Y4592-1

REVISION: 02/25/99

PLANNING ENGINEERING
 HUNSAKER & ASSOCIATES
 2820 N. GREEN VALLEY PKWY, SUITE 111 HENDERSON, NV. 89014
 (702) 435-4888, FAX (702) 435-4890

