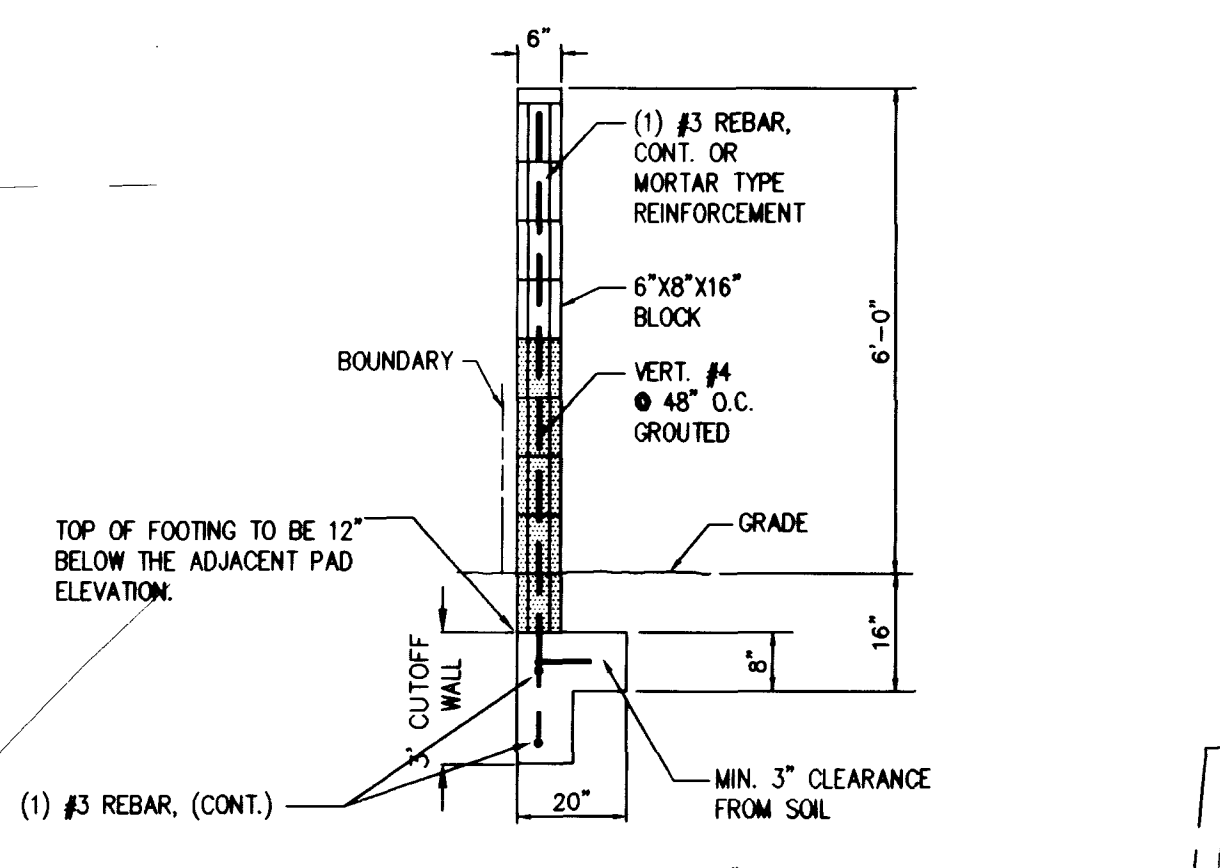
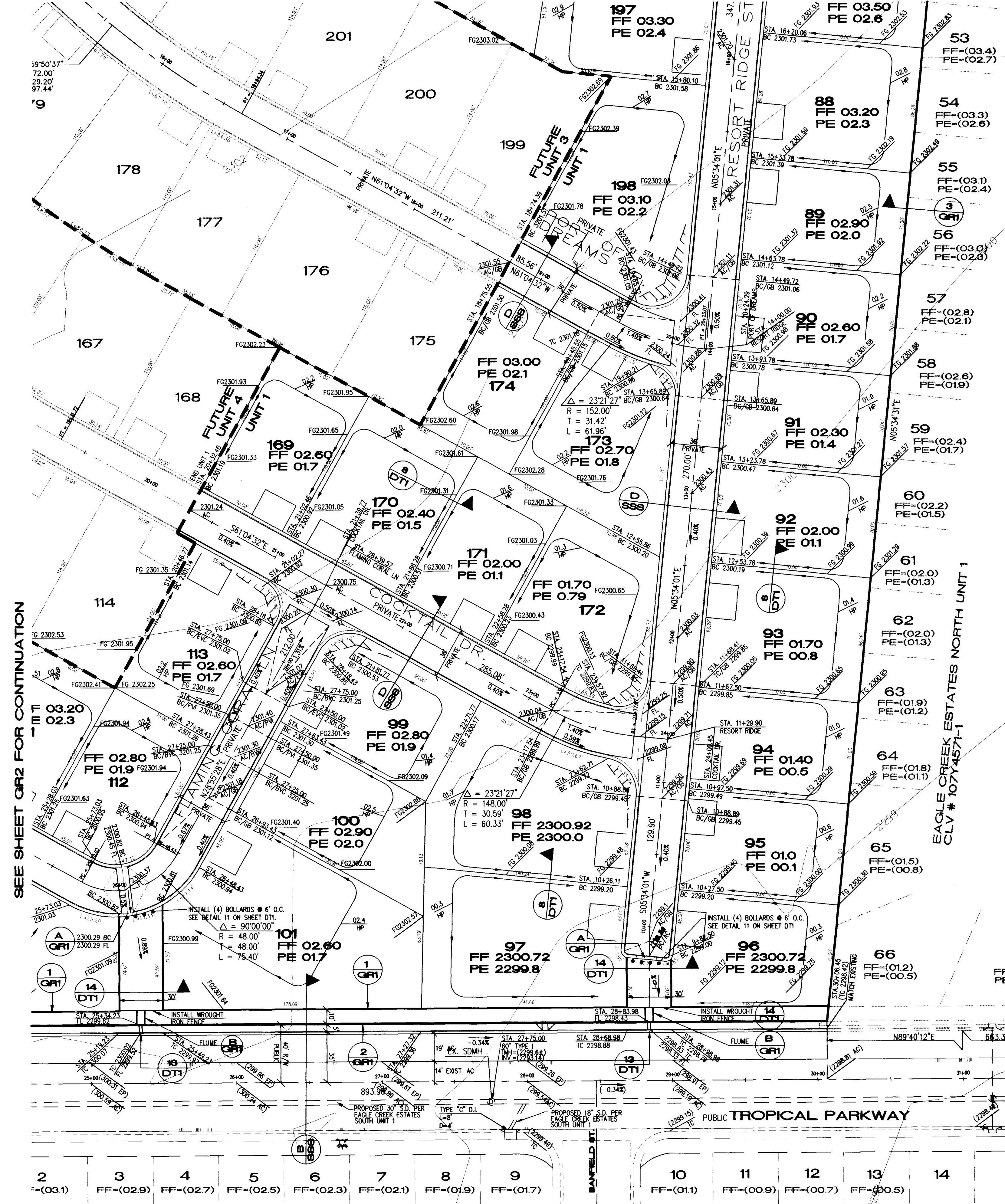
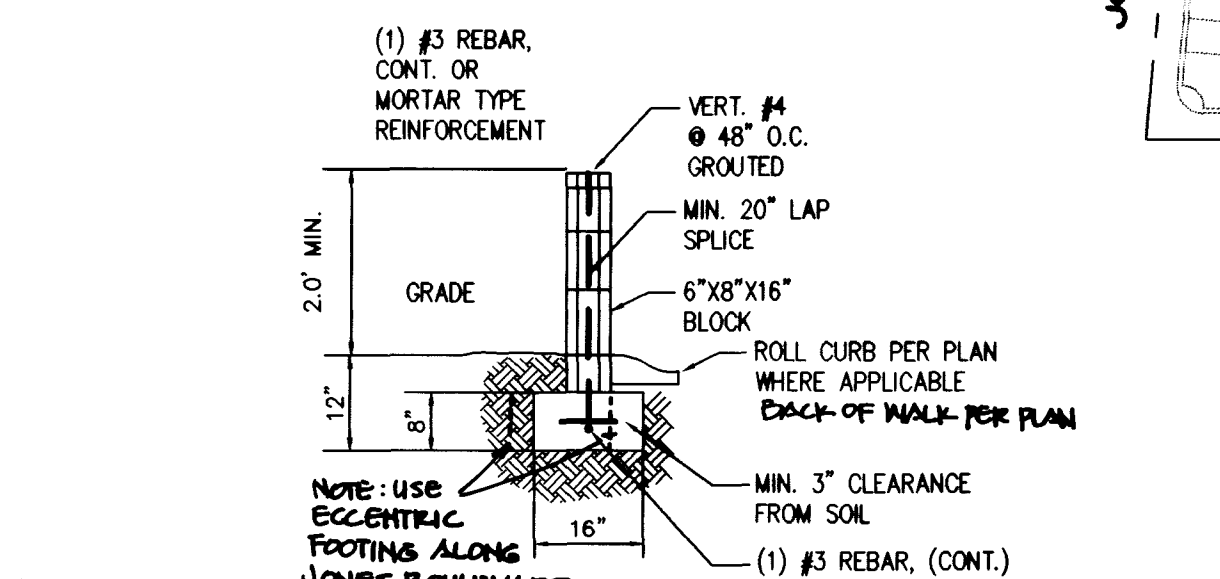


SEE SHEET GR3 FOR CONTINUATION

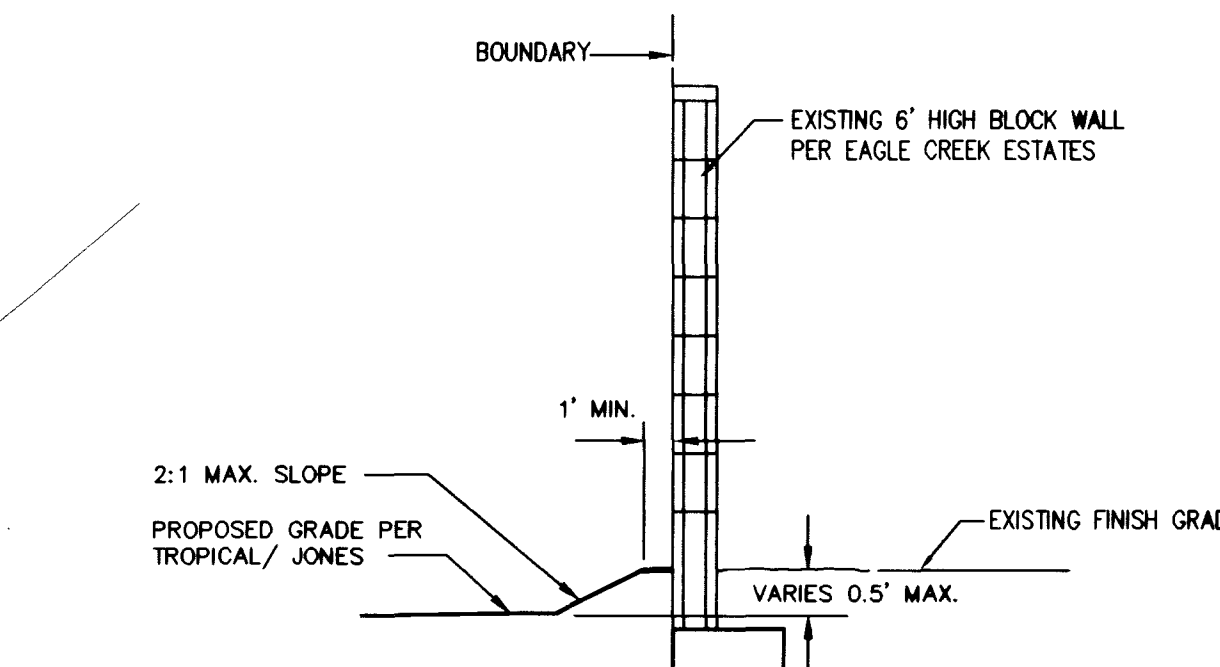


NOTE: REFER TO CITY OF LAS VEGAS "REGULAR C.M.U. AND MORTARLESS HEAD JOINT MASONRY WALL" HANDOUT FOR NOTES, INSPECTION REQUIREMENTS AND ADDITIONAL INFORMATION.

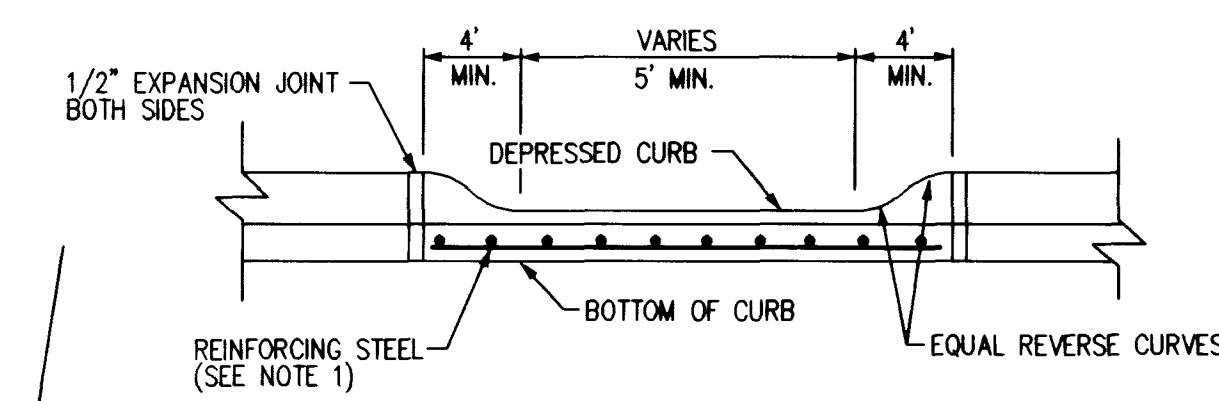
1 BOUNDARY WALL
N.T.S.



2 STEM WALL
N.T.S.

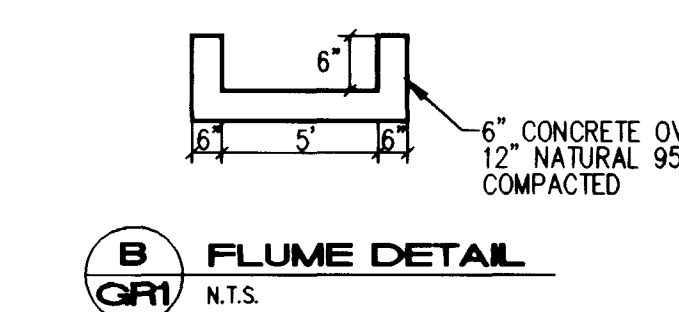


3 BOUNDARY WALL
N.T.S.

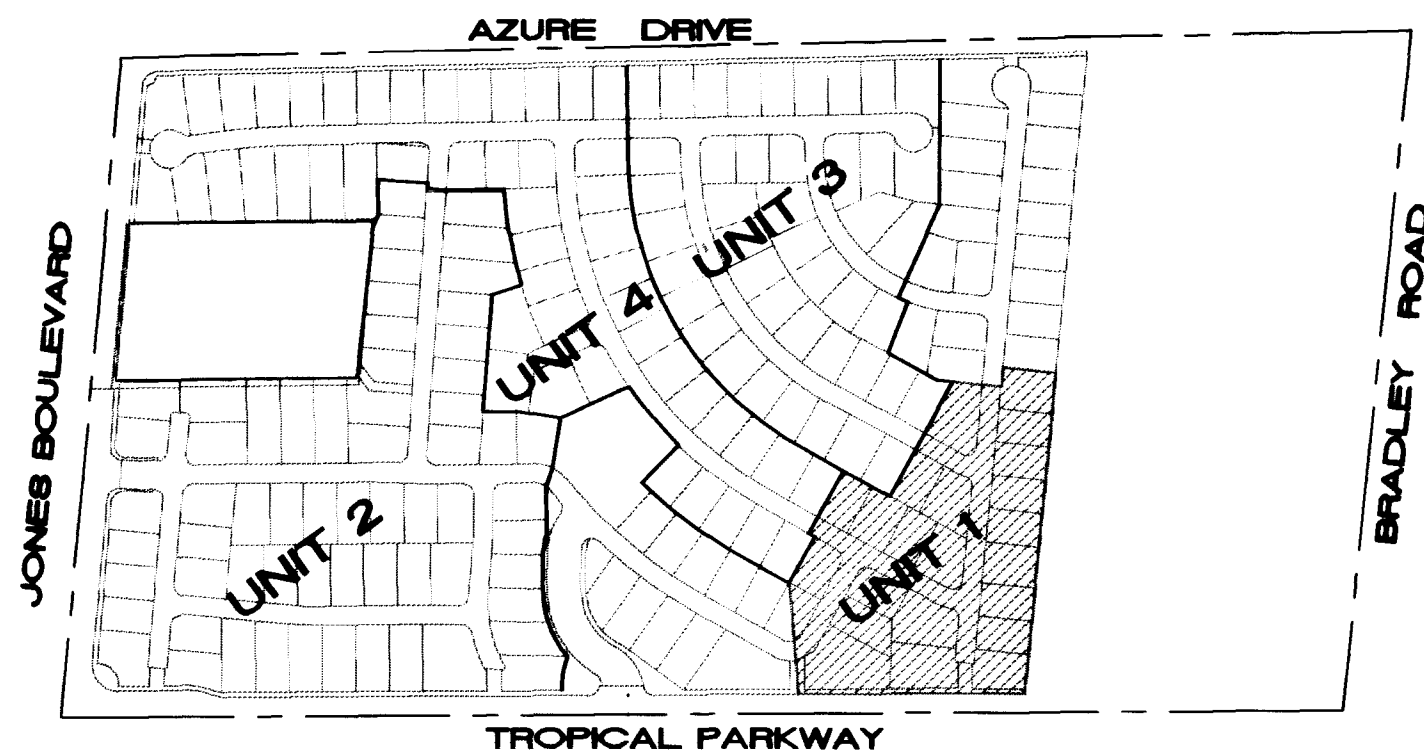
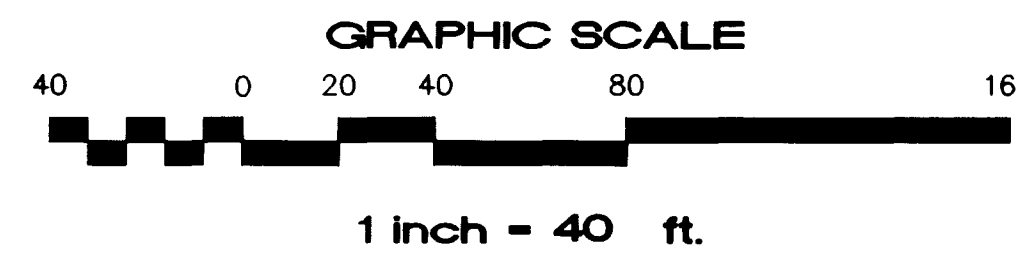


1. No. 4 BARS AT 16\"/>

A DEPRESSED CURB DETAIL
N.T.S.



B FLUME DETAIL
N.T.S.



KEY MAP
N.T.S.

BASIS OF BEARING

BEING THE CENTER LINE OF AZURE DRIVE BETWEEN BRADLEY ROAD AND LEON AVENUE, AS SHOWN ON THE RECORD OF SURVEY IN FILE 52 OF SURVEYS PAGE 70 WHICH BEARS NORTH 88°46'05\"/>

BENCHMARK

CITY OF LAS VEGAS BENCHMARK NO. 1LV90 25N4 CAP ON REBAR, PLS 6201, CENTENNIAL PARKWAY AND BRADLEY ROAD. ELEVATION = 701.8865 METERS, 2302.77 FEET (NAVD 88)

SOILS REPORT

PREPARED BY TERRACON CONSULTANTS WESTERN, INC., 4343 SOUTH POLARIS AVENUE, LAS VEGAS, NEVADA 89103. TEL. (702) 597-9393. PROJECT NUMBER 64975147, DATE: JUNE 26, 1997. CHARLES A. SKOUBY, P.E. 12521

LEGEND

- FL FLOW LINE
- FG FINISH GRADE
- HP HIGH POINT
- GB GRADE BREAK
- AC ASPHALT CONCRETE
- CONC CONCRETE
- BC BACK OF CURB
- *A* COMMON ELEMENT
- FF FINISH FLOOR
- PE PAD ELEVATION
- RE REFUSE ENCLOSURE
- Ø EXIST. OVERHEAD POWER POLE

GRADING NOTE

1. HUNSAKER & ASSOCIATES SHALL BE NOTIFIED IMMEDIATELY OF ANY DISCREPANCIES IN THE PLANS OR CONDITIONS IN THE FIELD.
2. ALL WORK TO BE PERFORMED OUTSIDE OF THE PROJECT BOUNDARY AND ON PRIVATE PROPERTY SHALL NOT BE PERFORMED UNTIL WRITTEN PERMISSION AND EASEMENT HAVE BEEN OBTAINED FROM THE OFFSITE OWNER AND GIVEN TO CITY OF LAS VEGAS.
3. FOR AREAS THAT ARE FLATTER THAN 2:1 SLOPE, OR LESS THAN 1' ELEVATION DIFFERENCE, SCARPS ARE NOT SHOWN ON PLAN FOR CLARITY PURPOSES.
4. ADD 2300' TO ALL PAD ELEVATIONS AND FINISH FLOOR ELEVATIONS.
5. SITE HAS PREVIOUSLY BEEN GRADED. GRADING AND STRUCTURAL SECTIONS SHALL CONFORM TO SOILS REPORT.
6. ALL SLOPE AREAS SHALL HAVE A MINIMUM ONE FOOT SHOULDER NEXT TO WALL PRIOR TO STARTING SLOPE.
7. PAD SECTION SHOWN ON PLANS IS FOR REFERENCE ONLY. FOR ACTUAL SECTION, REFER TO GEOTECHNICAL REPORT FOR SOILS ENGINEERS' RECOMMENDATION.
8. ALL SIDEWALK INSTALLATIONS SHALL CONFORM TO ADA REQUIREMENTS.

APPROVALS

I CERTIFY THAT THIS GRADING PLAN IS IN CONFORMANCE WITH THE APPROVED DRAINAGE STUDY ON FILE AT THE CITY OF LAS VEGAS FOR THIS PROJECT.

DAVID W. TRUSHAW P.E. 10897 DATE 1-1-98

D. R. HORTON CUSTOM HOMES 2920 N. GREEN VALLEY PKWY. SUITE 111 HENDERSON, NV. 89014 (702) 495-4888, FAX (702) 435-4950		HUNSAKER & ASSOCIATES ENGINEERING SURVEYING 401 N. BURNING DR. SUITE 100, LAS VEGAS, NEVADA 89101 (702) 248-4800	
GRADING PLAN		TROPICAL/JONES - UNIT 1 A.K.A. PARADISE FALLS - UNIT 1 CITY OF LAS VEGAS, NEVADA	
DRAWN BY: P.DARRASH	DESIGNED BY: P.DARRASH	CHECKED BY: A.SALCIDO	PROJECT NO. 2291-1
QUALITY CONTROL BY: P.DARRASH	QUALITY CONTROL BY: P.DARRASH	SCALE: 1" = 40'	SHEET 11 OF 31 DRAWING NO. 107Y4592-1

Avoid overhead power line contact
Call before you OVERHEAD
1-702-593-6111
1-800-277-2909
1-800-225-2838 (TOLL FREE)

Avoid cutting underground utility lines. It's costly
Call before you DIG
1-702-593-6111
1-800-277-2909
1-800-225-2838 (TOLL FREE)

