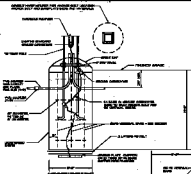


PATHWAY PICTURE FOUNDATION (BASE BID)
 1/4" = 1'-0"



BALLFIELD POLE FOUNDATION DETAIL (BASE BID)
SOCCER POLE FOUNDATION DETAIL (ALTERNATE B)
 1/4" = 1'-0"

- Notes:
- 1) BALLFIELD POLE AND SOCCER POLE ARE SHOWN IN ALTERNATE B.
 - 2) SOCCER POLE FOUNDATION IS SHOWN IN ALTERNATE B.

ELECTRICAL ONLINE DIAGRAM - SOCCER FIELD (BASE BID, ALTERNATE B)



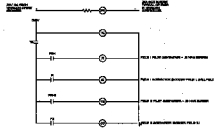
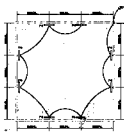
- Notes:
- 1) ALL LIGHTS TO BE 100 WATT.
 - 2) ALL LIGHTS TO BE 120 VOLT.
 - 3) ALL LIGHTS TO BE 120 VOLT.



ELECTRICAL ONLINE DIAGRAM - BALLFIELD (BASE BID)
 1/4" = 1'-0"



ENLARGED 1/4" = 1'-0" ELECTRICAL PLAN (BASE BID)
 1/4" = 1'-0"



CONTROL DIAGRAM FOR BALLFIELD LIGHTING (BASE BID)
CONTROL DIAGRAM FOR SOCCER FIELD LIGHTING (ALTERNATE B)
 1/4" = 1'-0"

Notes:

- 1) ALL LIGHTS TO BE 100 WATT.
- 2) ALL LIGHTS TO BE 120 VOLT.
- 3) ALL LIGHTS TO BE 120 VOLT.

UKROB CONSULTING ENGINEERS, INC.
 12345 MAIN STREET
 ANYTOWN, CA 90000
 (415) 555-1234

DEPARTMENT OF PARKS & LEISURE ACTIVITIES
 PROJECT: TORREY PINES PARK
 ELECTRICAL DETAILS: BALLFIELD AND SOCCER FIELD
 AND ONLINE DIAGRAMS AND BALLFIELD
 1/4" = 1'-0"