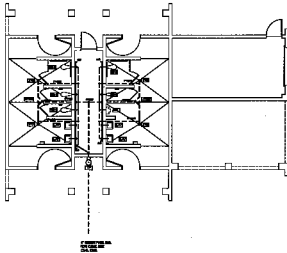


4" SEWER MAIN, B.G.  
FOR CONT. SEE  
CIVIL DWG.

|   |  |                                |  |
|---|--|--------------------------------|--|
| DATE  |  | REVISIONS                      |  |
| DRAWN BY: H.L.                                    |  | DESIGN BY: A.C.                |  |
| FLOOR SCALE: 1/4" = 1'-0"                         |  | DATE: 1/81                     |  |
| PROJECT: DEPARTMENT OF PUBLIC WORKS               |  | ARCHITECTURAL SERVICES         |  |
| SHEET TITLE: PARK - SOIL, WASTE & VENT FLOOR PLAN |  | Torrey Pines Park & Ball Field |  |
| DRAWING NO. 650.41                                |  | DATE: 1/81                     |  |
| 02  |  | 83                             |  |

Alternate No. 1



Alternate No. 1

DEPARTMENT OF PUBLIC WORKS

PARK  
 TORREY PINES PARK  
 BOILER HOUSE & VENT  
 FLOOR PLAN



ARCHITECTURAL SERVICES

|             |      |
|-------------|------|
| PROJECT NO. | DATE |
| DESIGNED BY | DATE |
| CHECKED BY  | DATE |
| APPROVED BY | DATE |