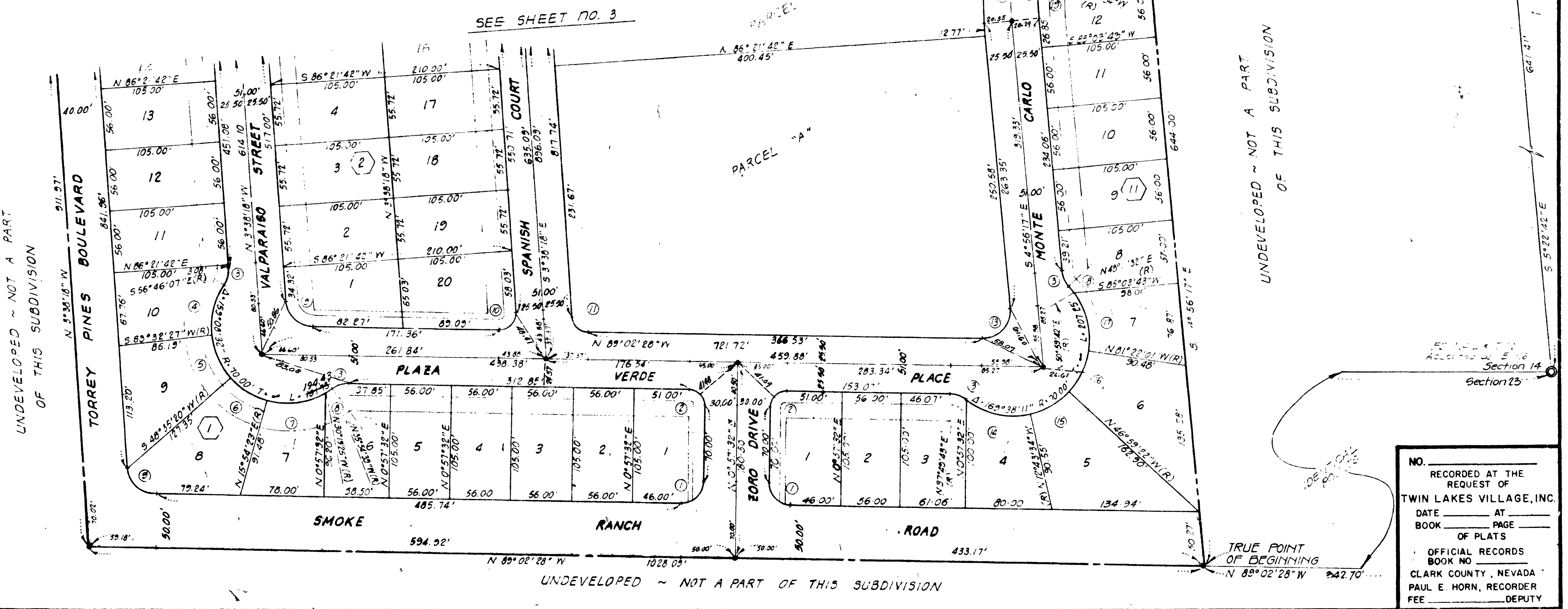


CURVE DATA									
No	Δ	R	T	L	No	Δ	R	T	L
1	30° 00' 00"	20.00'	20.00'	31.42'	30	33° 45' 58"	70.00'	21.25'	41.25'
2	30° 00' 00"	15.00'	15.00'	23.56'	31	43° 21' 34"	70.00'	27.83'	52.97'
3	36° 52' 11"	25.00'	8.33'	16.09'	32	11° 56' 43"	70.00'	7.72'	14.60'
4	39° 41' 26"	70.00'	25.26'	48.49'	33	30° 00' 00"	25.00'	25.00'	39.27'
5	34° 57' 07"	70.00'	22.04'	42.70'	34	91° 22' 24"	15.00'	15.36'	23.92'
6	32° 40' 57"	70.00'	20.52'	39.93'	35	2° 21' 48"	1,600.00'	33.00'	66.00'
7	46° 13' 48"	70.00'	29.88'	56.84'	36	2° 03' 35"	1,600.00'	30.16'	60.31'
8	5° 35' 14"	70.00'	3.42'	6.83'	37	0° 19' 38"	1,600.00'	4.57'	9.13'
9	85° 24' 10"	25.00'	23.07'	37.26'	38	1° 43' 02"	1,707.00'	25.58'	51.17'
10	94° 35' 50"	15.00'	16.25'	24.77'	39	2° 01' 28"	1,707.00'	30.16'	60.31'
11	85° 24' 10"	15.00'	13.84'	22.36'	40	2° 12' 55"	1,707.00'	33.01'	66.00'
12	95° 53' 45"	25.00'	27.72'	41.84'	41	07° 41' 35"	15.00'	14.41'	22.96'
13	50° 33' 17"	70.00'	53.05'	61.76'	42	1° 35' 24"	1,602.00'	22.23'	44.46'
14	34° 15' 48"	70.00'	21.58'	41.86'	43	2° 01' 28"	1,602.00'	28.30'	56.60'
15	34° 22' 39"	70.00'	21.65'	42.00'	44	1° 43' 02"	1,602.00'	24.01'	48.02'
16	47° 38' 17"	70.00'	30.90'	58.20'	45	0° 19' 38"	1,705.00'	4.87'	9.73'
17	2° 48' 10"	70.00'	1.71'	3.42'	46	2° 03' 35"	1,705.00'	32.13'	64.27'
18	6° 41' 43"	250.00'	14.62'	29.21'	47	1° 54' 11"	1,705.00'	28.32'	56.63'
19	3° 51' 52"	250.00'	8.43'	16.87'	48	2° 03' 57"	1,756.00'	31.66'	63.31'
20	10° 33' 35"	250.00'	23.10'	46.08'	49	1° 43' 32"	1,756.00'	26.44'	52.88'
21	10° 33' 35"	275.50'	25.46'	50.78'	50	0° 23' 07"	1,551.00'	5.21'	10.43'
22	10° 33' 35"	301.00'	27.82'	55.48'	51	2° 20' 19"	1,551.00'	31.66'	63.31'
23	5° 28' 28"	350.50'	16.76'	33.45'	52	2° 10' 19"	1,551.00'	29.40'	58.79'
24	5° 31' 32"	350.50'	16.91'	33.80'	53	92° 25' 43"	15.00'	15.65'	24.20'
25	11° 00' 00"	350.50'	33.75'	67.23'	54	2° 36' 55"	1,446.00'	33.01'	66.00'
26	75° 00' 00"	15.00'	12.37'	20.68'	55	2° 20' 19"	1,446.00'	29.52'	59.02'
27	40° 02' 30"	70.00'	25.51'	48.92'	56	0° 23' 07"	1,446.00'	4.86'	9.72'
28	34° 37' 37"	70.00'	22.52'	42.30'	57	1° 43' 32"	1,861.00'	28.03'	56.05'
29					58	2° 03' 57"	1,861.00'	33.56'	67.10'



NO. _____
 RECORDED AT THE
 REQUEST OF
 TWIN LAKES VILLAGE, INC.
 DATE _____ AT _____
 BOOK _____ PAGE _____
 OF PLATS _____
 OFFICIAL RECORDS
 BOOK NO. _____
 CLARK COUNTY, NEVADA
 PAUL E. HORN, RECORDER
 FEE _____ DEPUTY

