

VICINITY MAP  
NO SCALE

**LEGEND**

- EXISTING CONTOURS
- PROPOSED CONTOURS
- STREETLIGHT
- OVERHEAD POWER LINE
- SANITARY SEWER LINE
- POWER POLE
- FOUND MONUMENT
- EDGE OF ASPHALT
- PROPERTY LINE
- BLOCK WALL
- SIGHT VISIBILITY EASEMENT
- FIRE LANE: PAINT CURB RED

**ABBREVIATIONS**

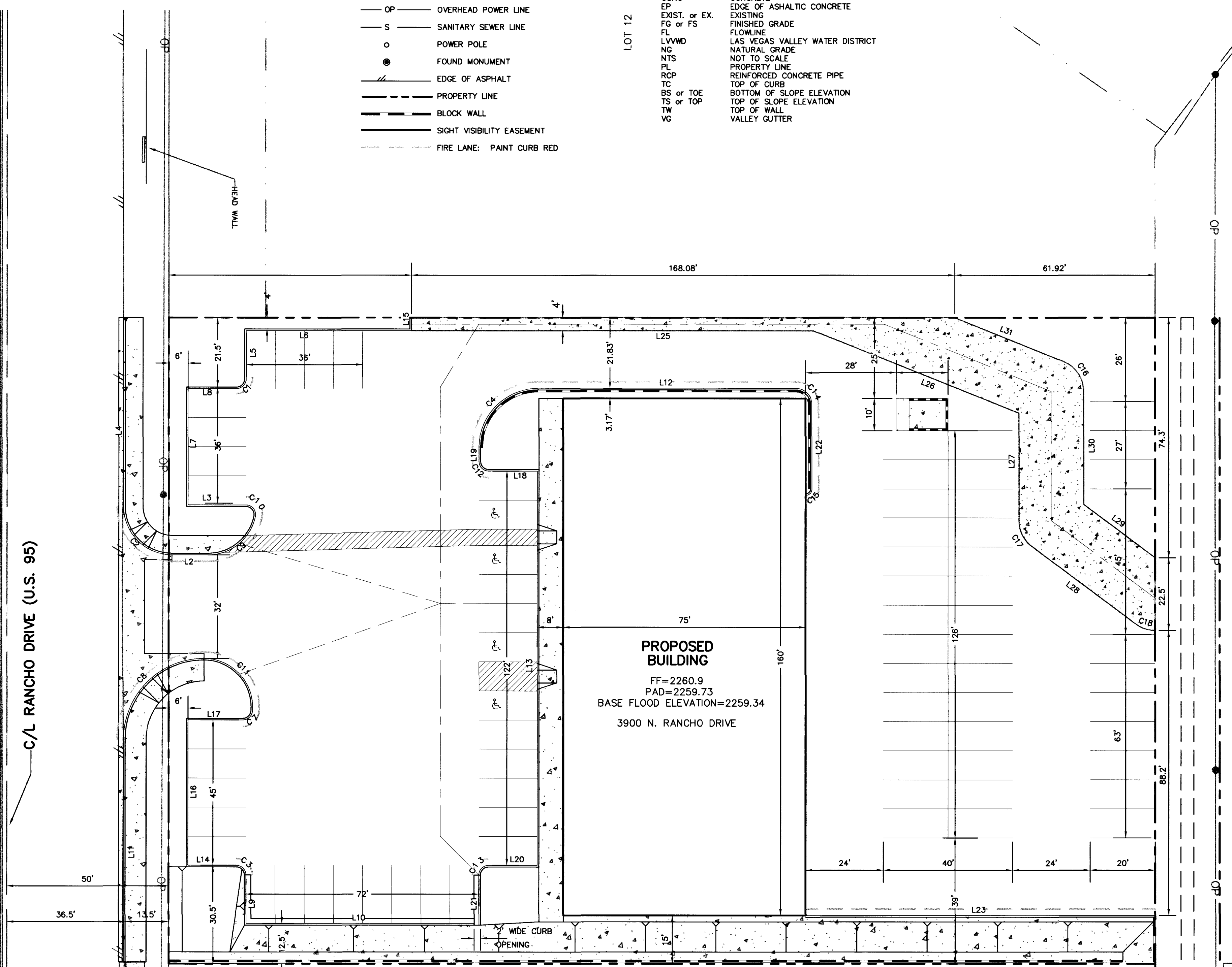
- AC ASPHALTIC CONCRETE
- TW TOP OF WALL FOOTING
- CL CENTERLINE
- CLV CITY OF LAS VEGAS
- CONC CONCRETE
- EP EDGE OF ASPHALTIC CONCRETE
- EXIST. or EX. EXISTING
- FG or FS FINISHED GRADE
- FL FLOWLINE
- LVWD LAS VEGAS VALLEY WATER DISTRICT
- NG NATURAL GRADE
- NTS NOT TO SCALE
- PL PROPERTY LINE
- ROP REINFORCED CONCRETE PIPE
- TC TOP OF CURB
- BS or TOE BOTTOM OF SLOPE ELEVATION
- TS or TOP TOP OF SLOPE ELEVATION
- TW TOP OF WALL
- VG VALLEY GUTTER

**BENCHMARK**

BM 700012NES  
RIVET AND PLATE IN TOP OF HEAD WALL, NORTH SIDE OF RANCHO ROAD AT JONES.  
ELEVATION = 2265.48 NAVD 88

**BASIS OF BEARINGS**

NORTH 36°26'00" WEST BEING THE CENTERLINE OF U.S. HIGHWAY NO. 95 AS FOUND IN BOOK 4, PAGE 19 OF PLATS IN THE CLARK COUNTY RECORDER'S OFFICE, CLARK COUNTY, NEVADA.



LINE TABLE

LINE	BEARING	DISTANCE
L1	N36°26'00"W	15.85'
L2	S53°34'00"E	11.17'
L3	N53°34'00"E	18.00'
L4	S36°26'00"E	58.50'
L5	N36°26'00"W	19.00'
L6	N53°34'00"E	51.00'
L7	S36°26'00"E	36.00'
L8	N53°34'00"E	15.00'
L9	S36°26'00"E	15.00'
L10	N53°34'00"E	20.50'
L11	S36°26'00"E	89.00'
L12	N53°34'00"E	79.50'
L13	S36°26'00"E	122.00'
L14	N53°34'00"E	15.00'
L15	S36°26'00"E	4.00'
L16	S36°26'00"E	45.00'
L17	N53°34'00"E	16.96'
L18	N53°34'00"E	15.00'
L19	S36°26'00"E	4.17'
L20	N53°34'00"E	15.00'
L21	S36°26'00"E	15.50'
L22	S36°26'00"E	26.17'
L23	S53°34'00"W	108.00'
L25	N53°34'00"E	124.40'
L26	S75°27'38"W	68.54'
L27	N36°26'00"W	33.24'
L28	N89°33'48"W	40.00'
L29	N89°33'48"W	27.50'
L30	N36°26'00"W	35.00'
L31	S75°27'38"W	36.26'

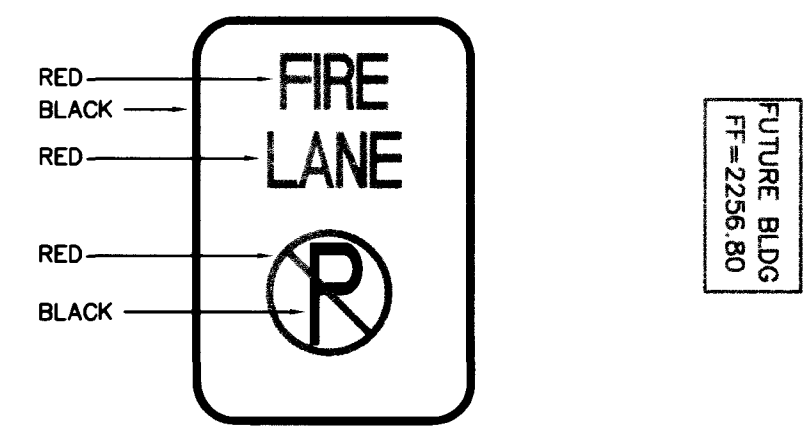
NOTE: ALL DIMENSIONS ARE TO FACE OF CURB, WHERE RELEVANT.

CURVE TABLE

CURVE	RADIUS	DELTA	LENGTH	TANGENT
C1	3.00'	90°00'00"	4.71'	3.00'
C2	15.00'	90°00'00"	23.56'	15.00'
C3	3.00'	90°00'00"	4.71'	3.00'
C4	18.50'	90°00'00"	29.06'	18.50'
C7	3.00'	85°13'11"	4.48'	2.76'
C8	25.00'	90°00'00"	39.27'	25.00'
C9	15.00'	77°58'31"	20.41'	12.41'
C10	3.00'	102°01'29"	5.34'	3.71'
C11	15.00'	94°46'49"	24.81'	16.31'
C12	3.00'	90°00'00"	4.71'	3.00'
C13	3.00'	90°00'00"	4.71'	3.00'
C14	5.00'	90°00'00"	7.85'	5.00'
C15	2.00'	90°00'00"	3.14'	2.00'
C16	10.00'	68°08'21"	11.89'	6.76'
C17	10.00'	53°07'48"	9.27'	5.00'
C18	10.00'	36°52'12"	6.44'	3.33'

NOTE: ALL DIMENSIONS ARE TO FACE OF CURB, WHERE RELEVANT.

**FIRE LANE SIGNAGE**



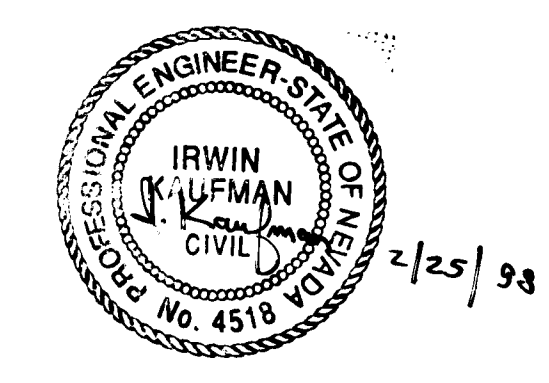
**MINIMUM SPECIFICATIONS OF "NO PARKING FIRE LANE SIGNS"**

- SIZE: 1' WIDE X 1 1/2' LONG OR 2' WIDE X 2 1/2' LONG AS REQUIRED
- COLOR: RED AND BLACK ON WHITE LUMINOUS BACKGROUND
- SYMBOL: INTERNATIONAL NO PARKING SYMBOL
- HEIGHT: TO BE INSTALLED NOT LESS THAN 7' NOR MORE THAN 10' FROM GROUND LEVEL

NOTE: ALL DIMENSIONS ARE TO FACE OF CURB, WHERE RELEVANT.

CALL before you DIG  
1-800-227-2600  
UNDERGROUND SERVICE (USA)  
AVOID CUTTING UNDERGROUND UTILITY LINES. IT'S COSTLY!

NOTE:  
SEE ORIGINAL APPROVED PLANS (107V2644) FOR UTILITY AND STREET DESIGN.



DEVELOPMENT SERVICES  
**OF NEVADA INC.**  
4270 SO. DECATUR BLVD., SUITE A-10A  
LAS VEGAS, NV, 89103  
PH. (702) 247-8608 • FAX. (702) 247-8753

**AMENDED HORIZONTAL CONTROL PLAN  
TONOPAH TERRACE**  
LOT 11 BLOCK 2  
NEAR ROLAND AVE. AND JONES BLVD.  
CITY OF LAS VEGAS, NV

FILE NAME: 0505HC1  
DESIGNED BY: IK  
DATE: 1/20/98  
REVIEWED BY: IK  
DATE: 1/20/98  
DRAWN BY: JB  
DATE: 1/20/98  
CHECKED BY: IK  
DATE: 1/20/98  
SCALE: **1"=20'**  
JOB NUMBER: **970502**  
SHEET: 2  
OF: 4

