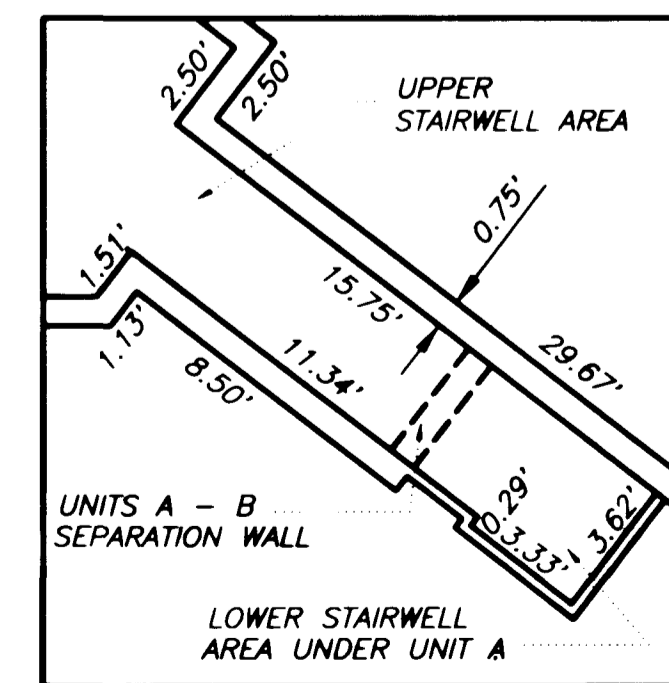
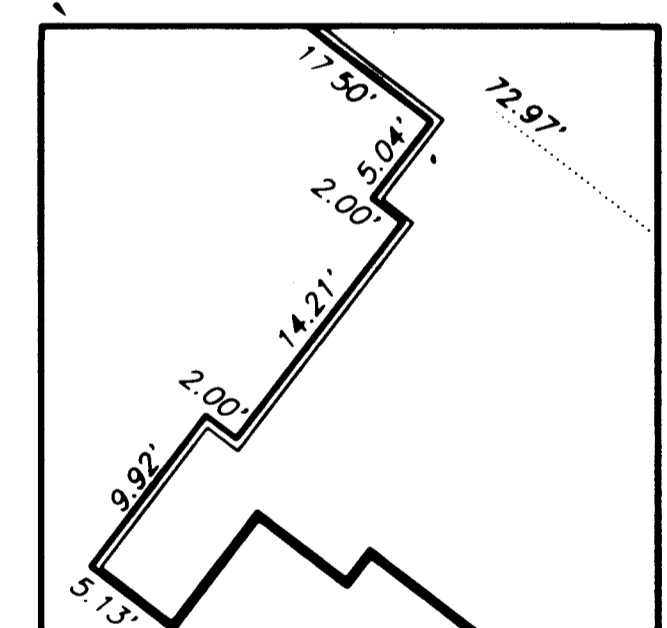
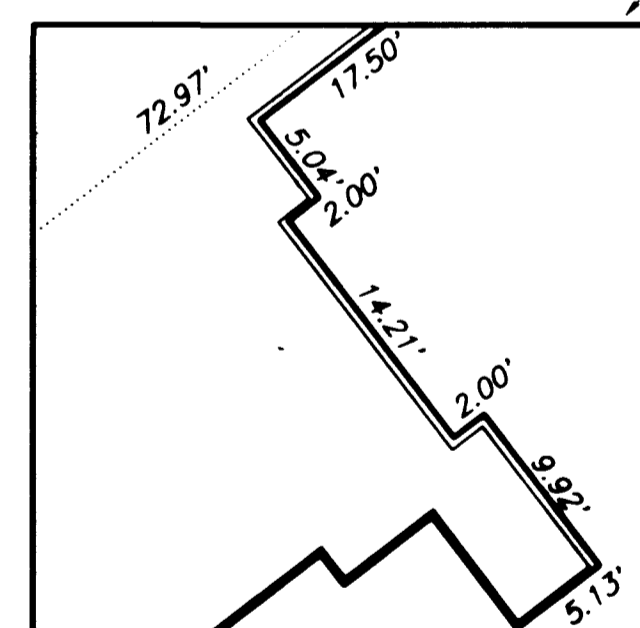
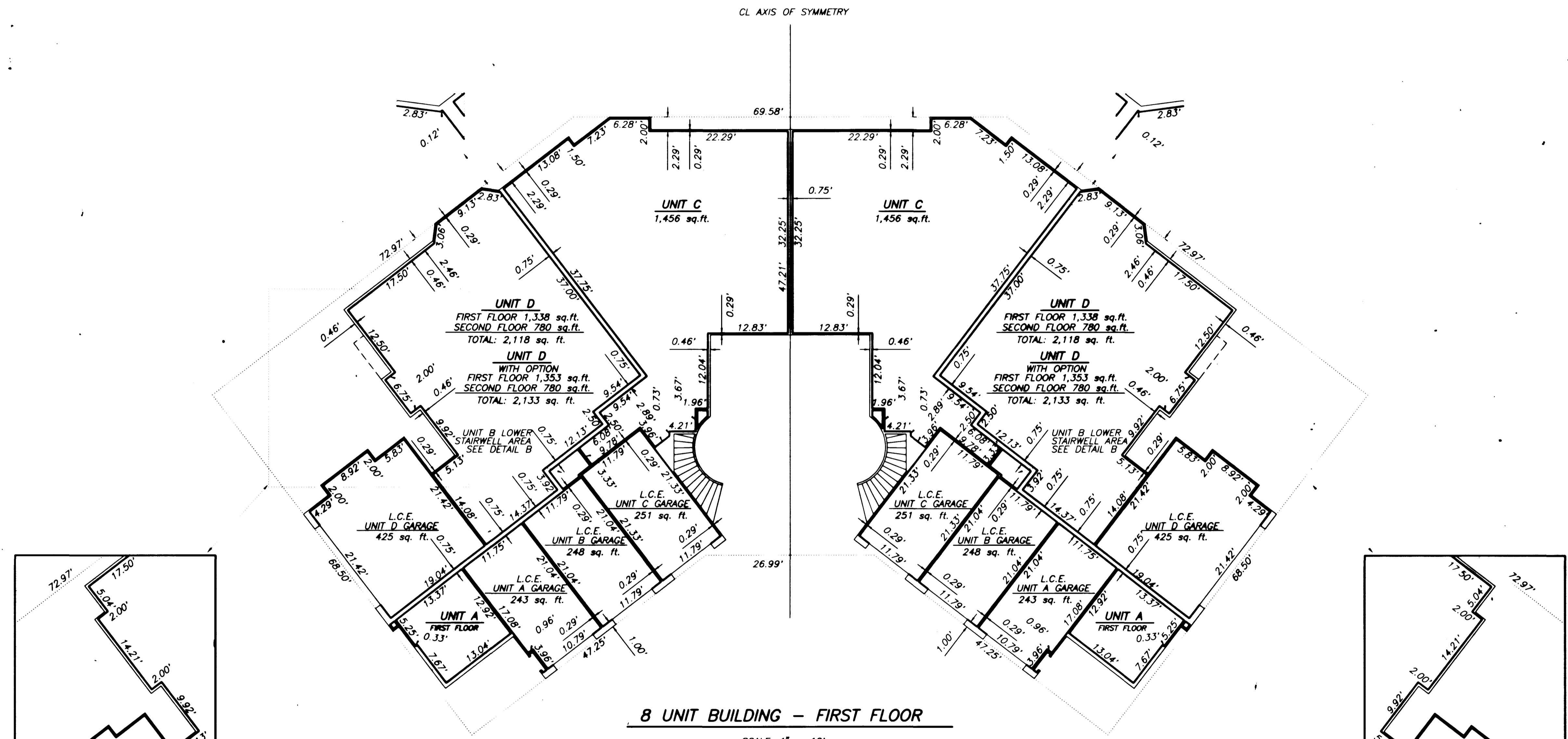


AMENDED PLAT OF THE TERRACES II IN THE HILLS AT SUMMERLIN

A CONDOMINIUM COMMON INTEREST COMMUNITY

BEING AN AMENDED MAP OF ALL OF "THE TERRACES II IN THE HILLS AT SUMMERLIN" AS SHOWN BY MAP THEREOF ON FILE IN BOOK 73, PAGE 57 OF PLATS IN THE CLARK COUNTY RECORDER'S OFFICE, CLARK COUNTY, NEVADA, LYING WITHIN SECTIONS 29 AND 30, TOWNSHIP 20 SOUTH, RANGE 60 EAST, M.D.M., CITY OF LAS VEGAS, CLARK COUNTY, NEVADA



AMENDED PLAT OF THE TERRACES II IN THE HILLS AT SUMMERLIN

A CONDOMINIUM COMMON INTEREST COMMUNITY

BEING AN AMENDED MAP OF ALL OF "THE TERRACES II IN THE HILLS AT SUMMERLIN" AS SHOWN BY MAP INDEXES ON FILE IN BOOK 73, PAGE 57 OF PLATS IN THE CLARK COUNTY RECORDER'S OFFICE, CLARK COUNTY, NEVADA, 1980 WITH SECTIONS 28 AND 30, TOWNSHIP 30 SOUTH, RANGE 80 EAST, MERID. CITY OF LAS VEGAS, CLARK COUNTY, NEVADA.

