

CURB DATA				
NO.	DELTA/BRG	RADIUS	LENGTH	TANGENT
1	N85°08'51"E	--	36.42'	--
2	N85°08'51"E	--	50.00'	--
3	N85°08'51"E	--	45.00'	--
4	N85°08'51"E	--	50.00'	--
5	N85°08'51"E	--	45.00'	--
6	N85°08'51"E	--	45.00'	--
7	N85°08'51"E	--	50.00'	--
8	N85°08'51"E	--	45.00'	--
9	N85°08'51"E	--	9.88'	--
10	Δ= 48°36'43"	20.00'	16.97'	9.03'
11	Δ= 48°16'08"	40.50'	34.12'	18.15'
12	Δ= 90°20'35"	40.50'	63.86'	40.74'
13	Δ= 76°02'48"	40.50'	53.75'	31.67'
14	Δ= 62°33'54"	40.50'	44.22'	24.61'
15	Δ= 44°36'18"	20.00'	15.57'	8.20'
16	Δ= 04°00'25"	20.00'	1.40'	0.70'
17	N85°08'51"E	--	48.88'	--
18	N85°08'51"E	--	45.00'	--
19	N85°08'51"E	--	50.00'	--
20	N85°08'51"E	--	45.00'	--
21	N85°08'51"E	--	50.00'	--
22	N85°08'51"E	--	45.00'	--
23	N85°08'51"E	--	50.00'	--
24	N85°08'51"E	--	34.88'	--

**CONSTRUCTION NOTES:**

- ① INSTALL 4" MIN. A.C. 1/4" TYPE II AGGREGATE BASE & 9" TYPE I AGGREGATE BASE
- ② INSTALL 3" MIN. A.C. 1/4" TYPE II AGGREGATE BASE & 6" TYPE I AGGREGATE BASE
- ③ INSTALL 2" MIN. A.C. 1/4" TYPE II AGGREGATE BASE & 6" TYPE I AGGREGATE BASE
- ④ INSTALL 24" "L" TYPE CURB & GUTTER 1/6" TYPE II AGGREGATE BASE
- ⑤ INSTALL 30" ROLL TYPE CURB & GUTTER 1/6" TYPE II AGGREGATE BASE
- ⑥ INSTALL 4" SIDEWALK 4" THICK 1/5" TYPE II AGGREGATE BASE
- ⑦ SAWCUT & REMOVE EXISTING A.C.

**BASIS OF BEARING**

NORTH 00°00'59" EAST, BEING THE CENTERLINE OF BRADLEY ROAD FROM ANN ROAD TO TROPICAL PARKWAY, CITY OF LAS VEGAS, CLARK COUNTY, NEVADA, AS SHOWN PER BOOK 77, PAGE 26 OF PLATS ON FILE IN THE OFFICE OF THE CLARK COUNTY RECORDER'S OFFICE.

**BENCHMARK**

C.L.V. BENCHMARK NO. 38 (STATION 11V90 36M4)

RIVET & PLATE IN SOUTH TOP OF CURB ANY ROAD AT CURB ANGLE POINT, 1530 FT. EAST OF CALVERTS STREET.

ELEVATION = 696.2262 METERS (MVD88)  
ELEVATION = 2284.20 FEET

**CALL BEFORE YOU DO OVERHEAD**

AVOID HITTING OVERHEAD POWER LINES. IT'S COSTLY

1-702-593-6111

**Call before you Dig.**

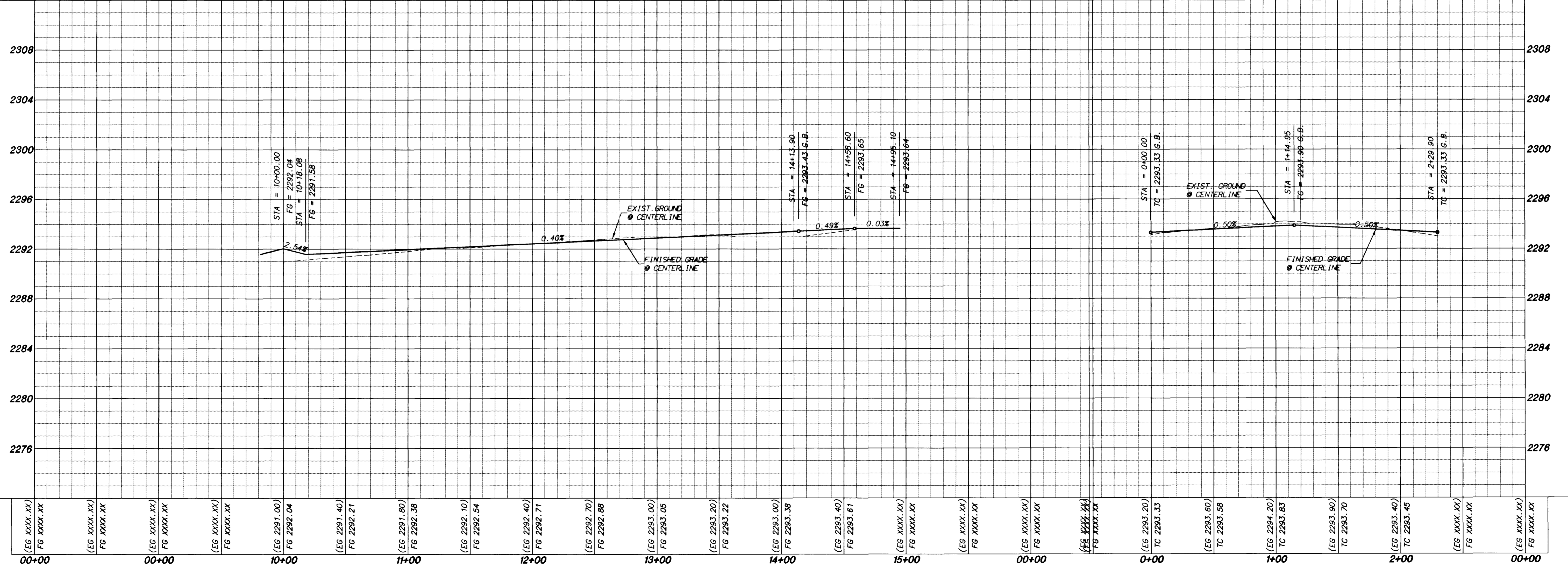
1-800-227-2600

UNDERGROUND SERVICE (USA)

AVOID CUTTING UNDERGROUND UTILITY LINES. IT'S COSTLY

**STRIKING POINT COURT**

**STRIKING POINT COURT CULDESAC**



**SIGNATURE HOMES**  
801 S. RANCHO DRIVE # E-4  
(702) 385-5031 • FAX (702) 384-9296

**Signature THE DREAM BUILDER**

**Robert Bein, William Frost & Associates**  
PROFESSIONAL ENGINEERS, PLANNERS & SURVEYORS  
2280 SOUTH JONES BLVD., SUITE 100, LAS VEGAS, NV 89102  
(702) 364-0180 • FAX (702) 364-0189

**STRIKING POINT COURT PLAN AND PROFILE**  
STA. 10+00.00 TO 14+95.10

**THE RIDGE II**

DRAIN BY: C.W.W. 7/1/98  
DESIGNED BY: 7/1/98  
CHECKED BY: J.H.D.  
PROJECT NO: 75067  
SCALE: 1" = 40' HORIZ.  
1" = 4' VERT.

**MARK W. JOHNSON**  
CIVIL ENGINEER  
NO. 12723  
EXPIRES 12/31/00

SHEET **S9**  
19 OF 39 SHEETS  
DRAWING NO. 1074-4606-2

