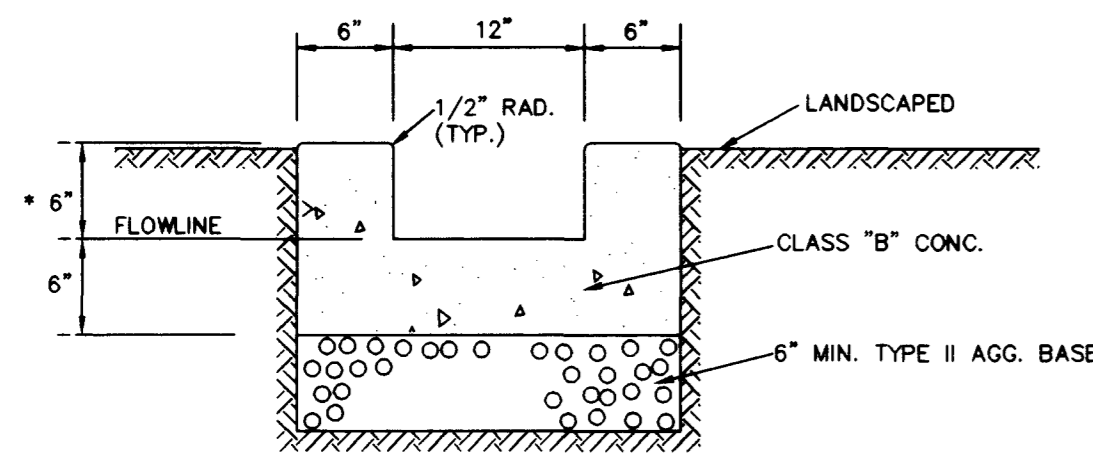


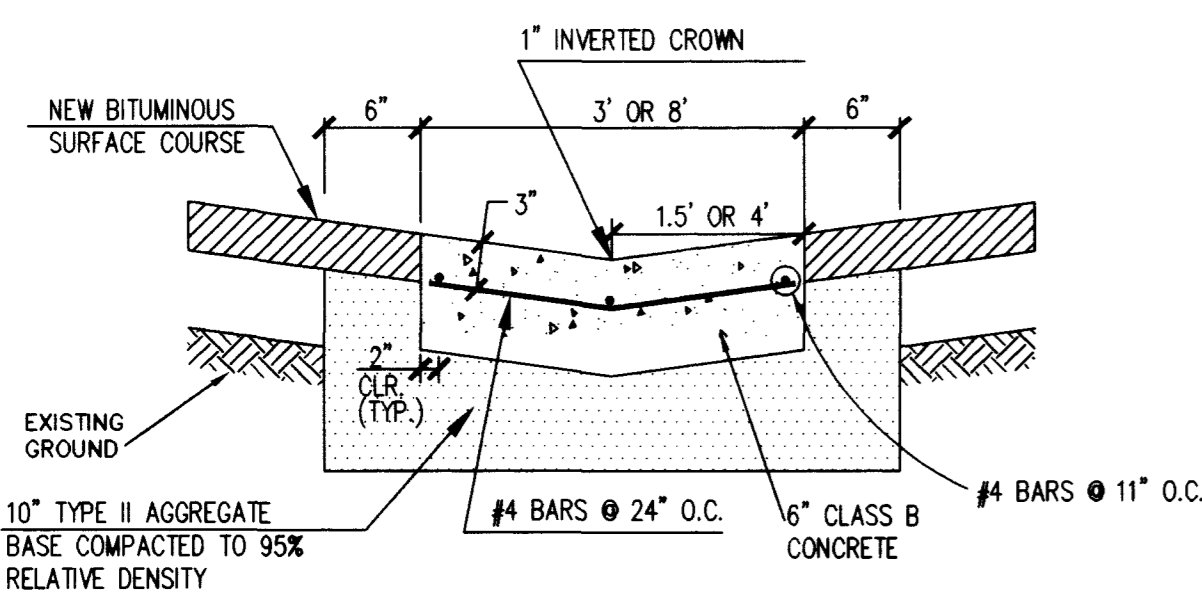
\* DIMENSION MAY VARY IN ORDER THAT TOP OF CHANNEL CORRESPONDS WITH TOP OF ADJACENT CURB OR SIDEWALK



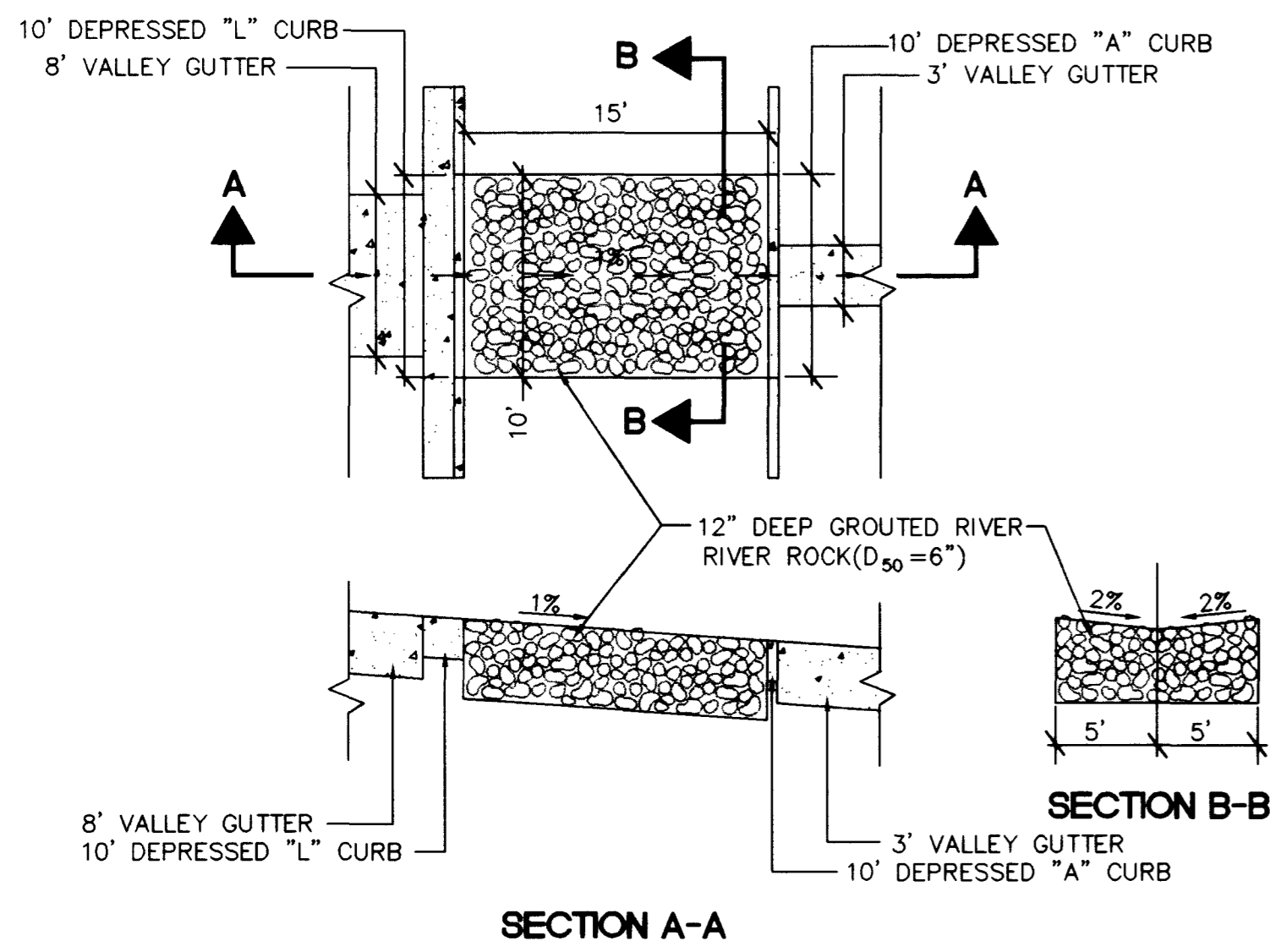
NOTES:

1. EXPANSION JOINTS REQUIRED AT ALL LOCATIONS WHERE CHANNEL MEETS CURB.
2. WEAKENED PLANE JOINTS REQUIRED AT 10' MAX. SPACING.

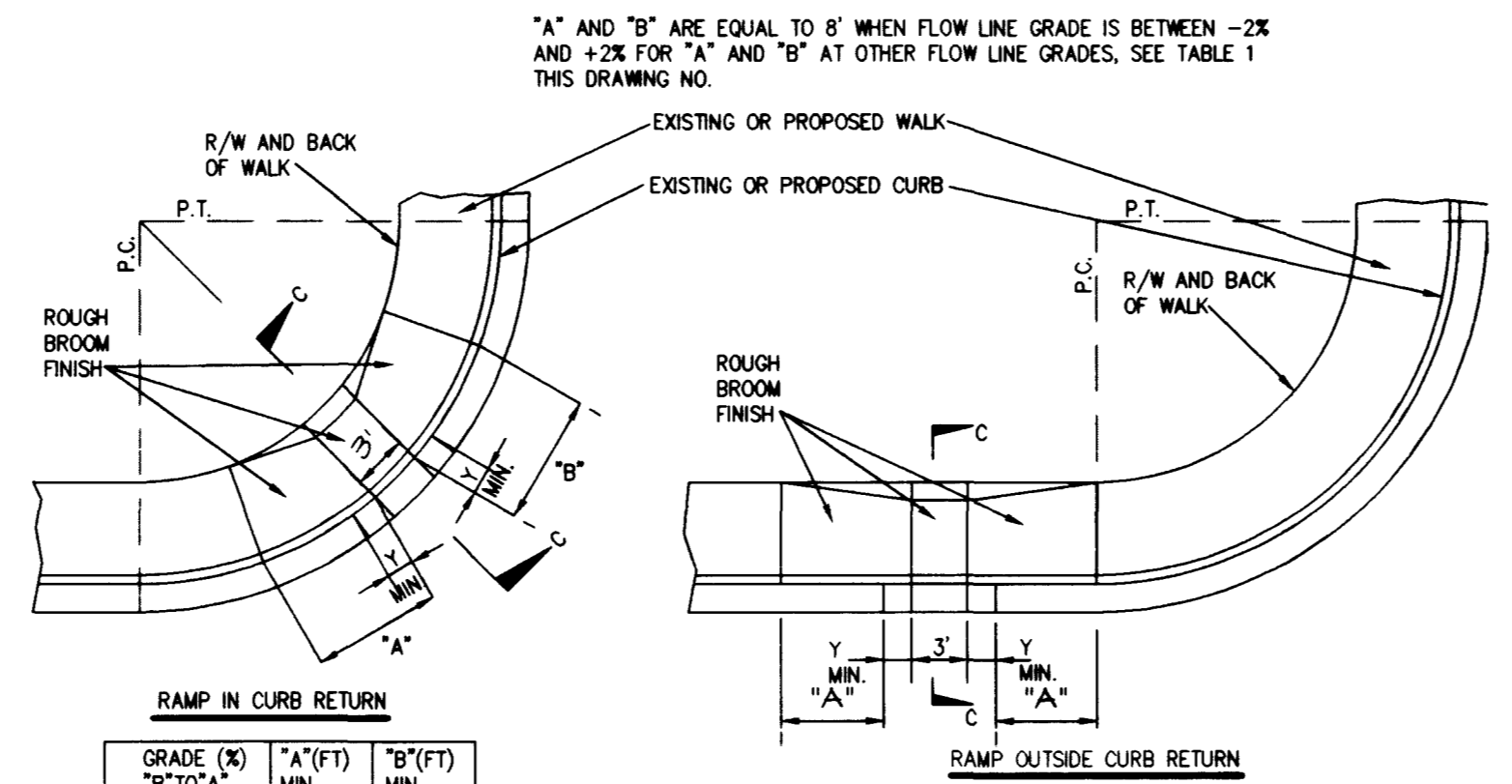
**2' CONCRETE CHANNEL** (1) NTS C5.01



**3' AND 8' VALLEY GUTTER** (2) NTS C5.01



**RIP-RAP CHANNEL** (3) NTS C5.01



**RAMP IN CURB RETURN**

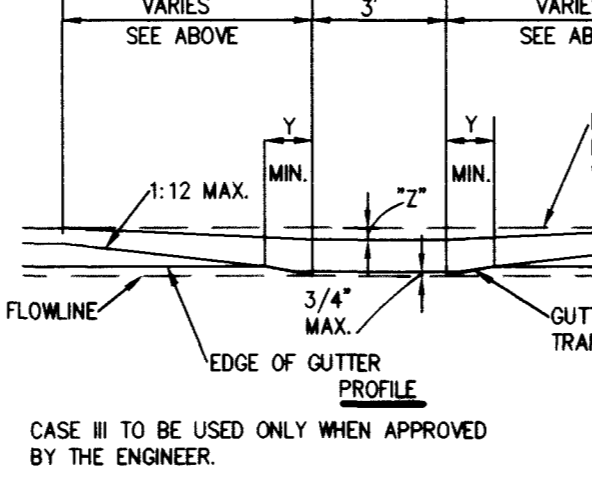
GRADE ('B' TO 'A')	'A' (FT) MIN.	'B' (FT) MIN.
-8 TO -5.01	4.5	21.5
-5 TO -4.01	4.5	15.0
-4 TO -3.01	4.5	12.0
-3 TO -2.01	4.5	9.5
-2 TO 2	8.0	8.0
2.01 TO 3	9.5	4.5
3.01 TO 4	12.0	4.5
4.01 TO 5	15.0	4.5
5.01 TO 6	21.5	4.5

**TABLE 1. TRANSITION LENGTHS FOR 1:12 SIDE SLOPES**

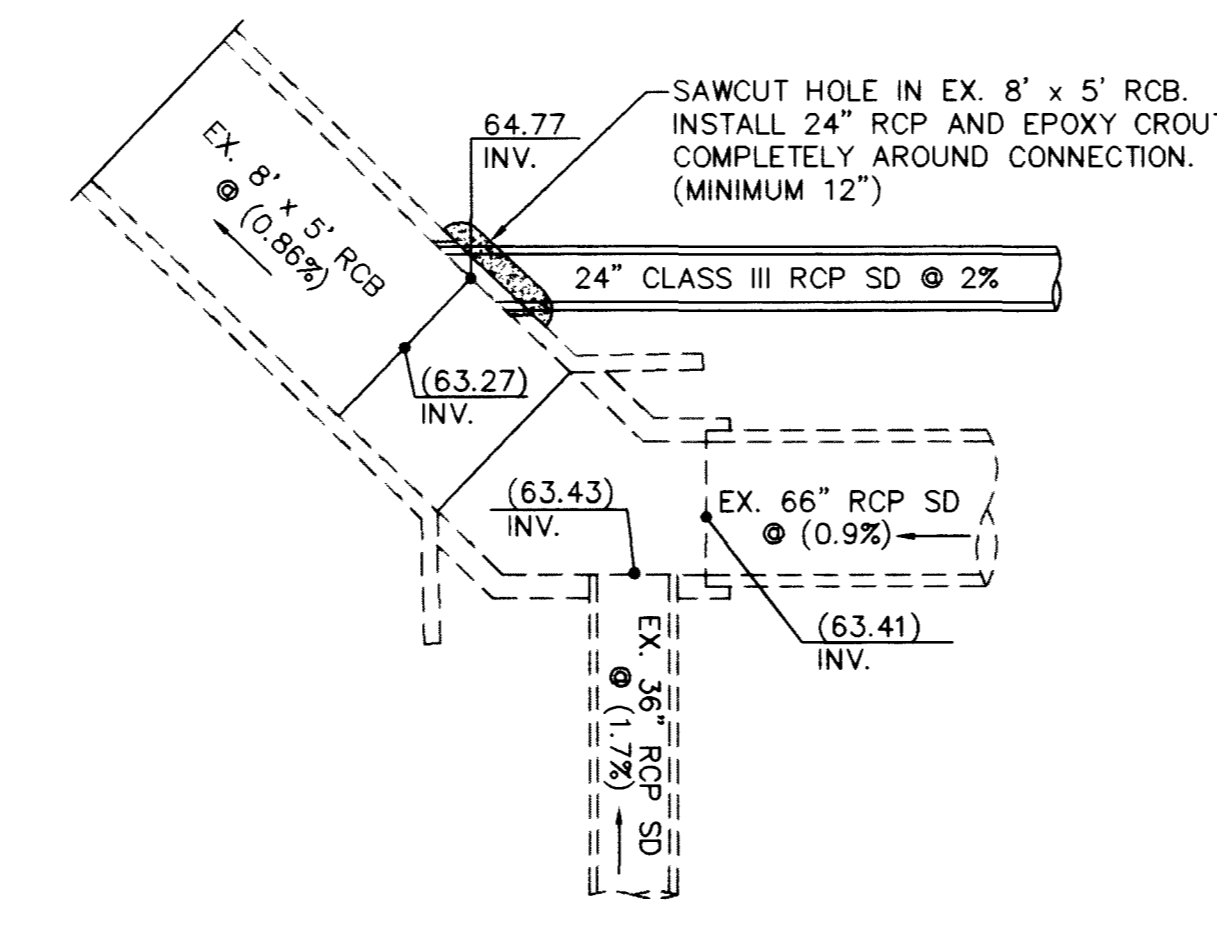
SIDEWALK WIDTH (FT)	'A' (IN) MIN.	'B' (IN) MIN. (USE )
4	2.75	3.50 (CASE III)
5	2.00	2.75
6	1.25	2.00

**TABLE 3. DEPTH OF DEPRESSION**

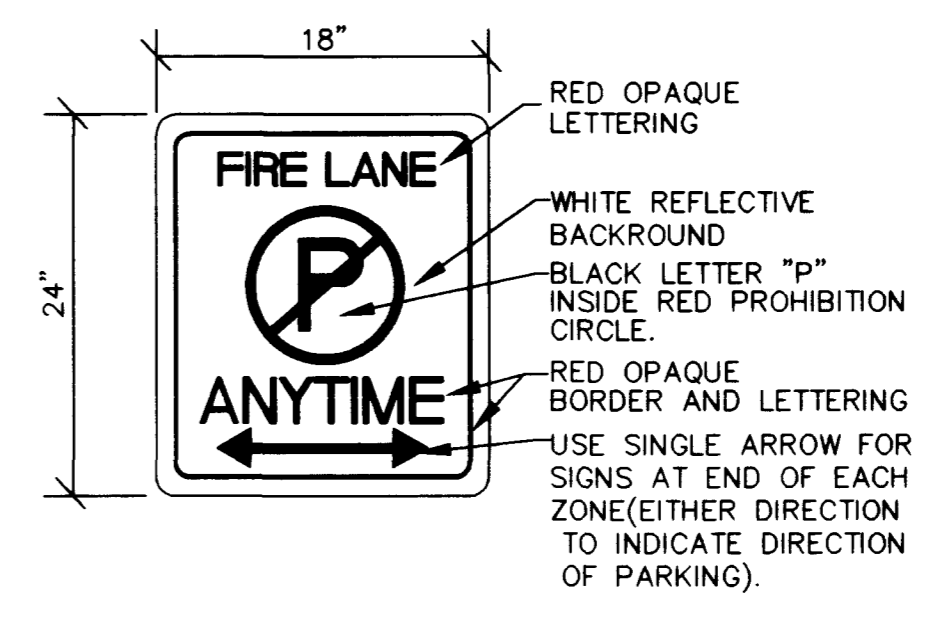
NOTE: CHARTS APPLY TO 6" CURB FACE IF CURB HAS GREATER THAN A 6" CURB FACE A SPECIAL DESIGN IS REQUIRED.



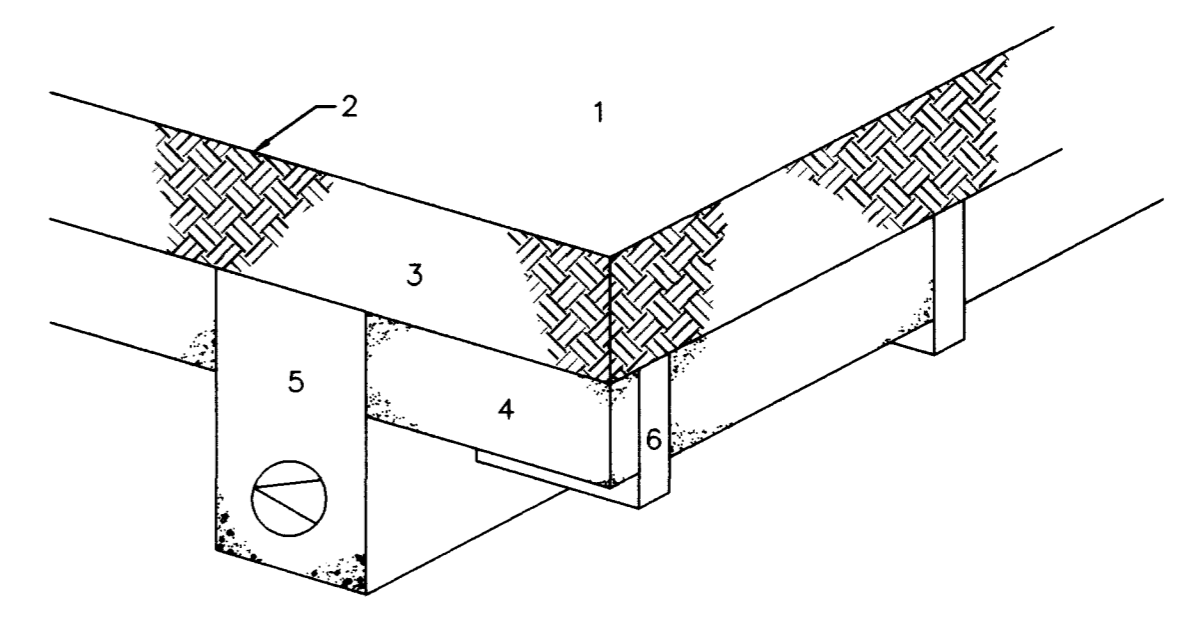
**SIDEWALK RAMP - CASE I** (4) NTS C5.01  
STD. DWG. NO. 235



**STORM DRAIN CONNECTION** (5) NTS C5.01

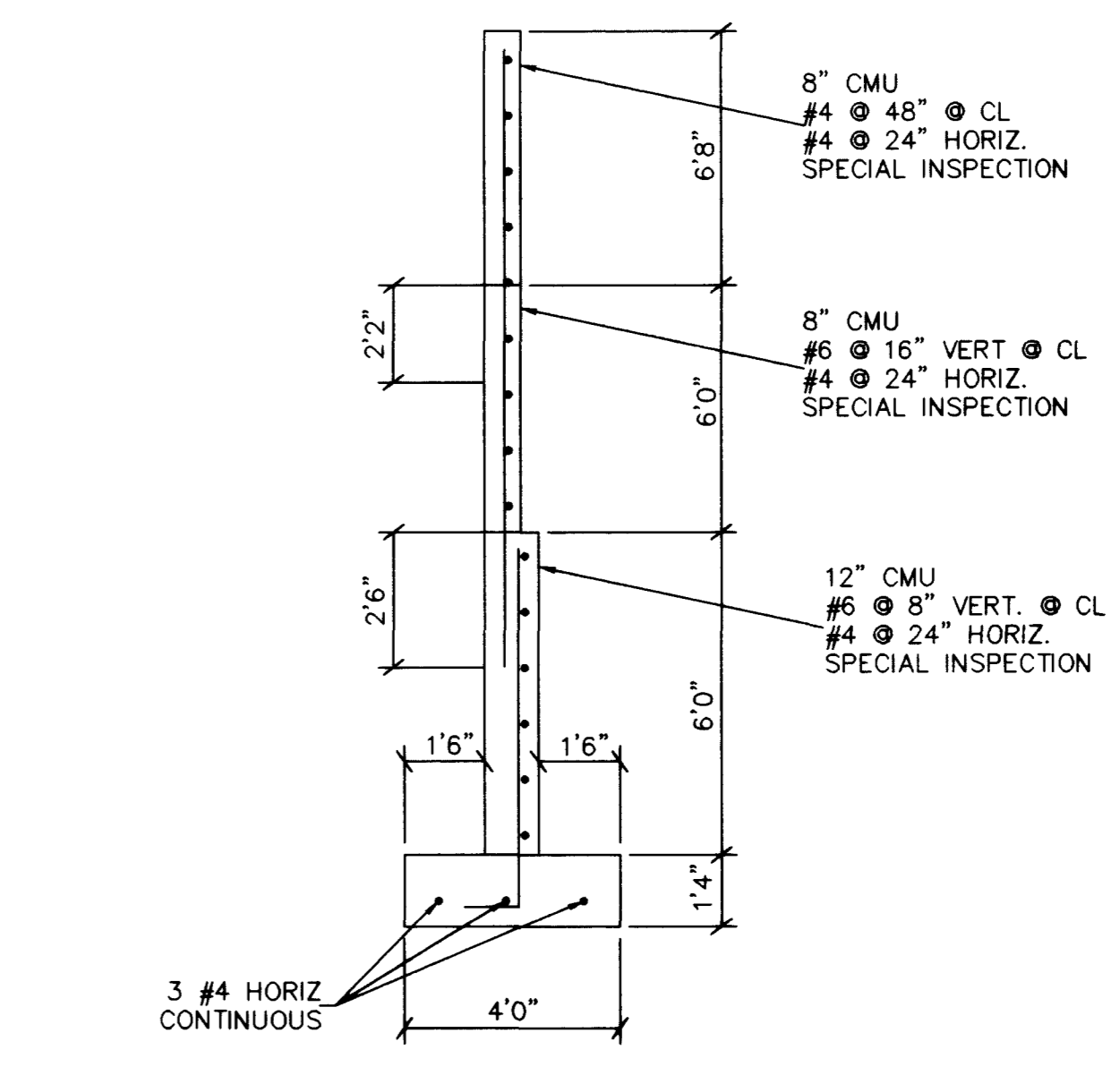


**'FIRE LANE' SIGN** (6) NTS C5.01

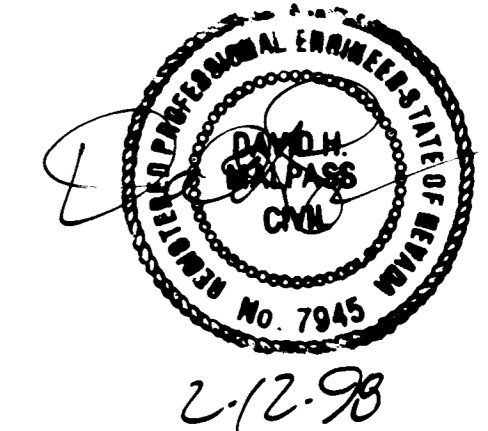


1. A SPECIFIED SEEDING OR SPECIALIST TURF SYSTEM. EITHER:  
 SEED  PRE-GERMINATED SEED  
 STOLONS/SPRIGS  WASHED TURF/SOD
2. 1/2 IN. OF NETLON R200 ROOTZONE TOPPING (EFFECTIVELY ATS200 WITHOUT THE MESH) SUPPLIED AS PART OF THE NETLON ADVANCED TURF SYSTEM (NOT REQUIRED WITH THE WASHED TURF OPTION)
3. 6 IN. OF NETLON ADVANCED TURF ATS200 ROOTZONE. 4 INCHES WILL BE SUITABLE FOR THE MAJORITY OF LOCATIONS WHILST 6 INCHES WILL PROVIDE THE NECESSARY DRAINAGE AND HEALTH REQUIRED FOR AREAS SUBJECTED TO PARTICULARLY INTENSIVE USE OR HIGH RAINFALL.
4. SUB GRADE LIGHTLY CULTIVATED TO A DEPTH OF 6 IN. OR REPLACED WITH 4 IN. OF NETLON R200 ROOTZONE IF THE SUB GRADE IS A POOR NUTRITIONALLY DEFICIENT SOIL, A HEAVY CLAY OR SUBSOIL. THE SUB GRADE FOR NATION TO BE SMOOTHLY GRADED TO FOLLOW THE FINISHED SURFACE PROFILE.
5. DRAINAGE FOR NARROW WALKWAYS TO COMPRISE A SINGLE PIPE DRAIN IN A TRENCH, FILLED WITH 1/8 TO 1/4 IN WASHED, NON-CALCAREOUS GRAVEL, ALONG THE LENGTH OF WALKWAY AND DISCHARGING TO A SUITABLE OUTFALL. COARSE DRAINAGE GRAVEL MAY BE USED E.G. 1/2 IN. BUT THIS MUST BE BLINDED WITH 2 IN. OF COARSE SAND (ASTM SIEVE 18 TO 10). THE MINIMUM GRADIENT OF ALL PIPES TO BE 1%.
6. DRAINAGE FOR WIDER AREAS TO COMPRISE 2 IN. x 10 IN. DEEP SLIT DRAINS OR ADDITIONAL PIPES AT 3 TO 5 FT. SPACING LEADING TO THE MAIN DRAINAGE SYSTEM. ADVICE ON SUITABLE DRAINAGE LAYOUTS IS AVAILABLE FROM YOUR LOCAL NETLON ADVANCED TURF DISTRIBUTOR.

**NETLON ADVANCED TURF SYSTEM (FIRE LANE)** (7) NTS C5.01



**ELECTRICAL YARD CMU SCREEN WALL** (8) NTS C5.01



**PAUL STEELMAN LTD**  
ARCHITECTURE PLANNING  
1100 SOUTH JONES BLVD.  
SUITE B  
LAS VEGAS, NEVADA 89102  
PHONE (702) 248-8000  
FAX (702) 367-3565

**MARTIN & MARTIN**

MARTIN & MARTIN  
CIVIL ENGINEERS  
1100 SOUTH JONES BLVD.  
SUITE B  
LAS VEGAS, NEVADA 89102  
PHONE (702) 248-8000

**THE RESORT AT SUMMERLIN**  
HOTEL, CASINO & ENTERTAINMENT COMPLEX  
LAS VEGAS, NEVADA  
DRAWING AND SPECIFICATIONS FOR THE HOTEL, CASINO & ENTERTAINMENT COMPLEX  
DESIGNED BY MARTIN & MARTIN CIVIL ENGINEERS  
CONTRACT NO. 2-11-98  
REVISIONS: 1. 2-11-98 (SEE PARAGRAPH) 2-11-98  
BY: [Signature] (SEE PARAGRAPH) 2-11-98

DATE: 2-11-98  
DRAWN BY: [Signature]  
CHECKED BY: [Signature]  
REVISION: 1. ADDED STORM DRAIN CONNECTION  
DETAIL: [Signature]  
SCALE: [Signature]  
BY: [Signature] (SEE PARAGRAPH) 2-11-98

SHEET TITLE AND LOCATION  
**DETAIL SHEET**

SHEET NUMBER  
**C5.01**  
SHEET 28 OF 32  
ISSUED FOR CONTRACT  
BULLETIN #8  
2-11-98

CONCRETE CHANNEL



1. REINFORCED CONCRETE CHANNEL  
2. CONCRETE CHANNEL

CONCRETE CHANNEL



STEEL AND CONCRETE CHANNEL

STEEL CHANNEL



1. REINFORCED CONCRETE CHANNEL  
2. CONCRETE CHANNEL

3. STEEL CHANNEL

4. CONCRETE CHANNEL

5. STEEL CHANNEL

6. CONCRETE CHANNEL

7. STEEL CHANNEL

8. CONCRETE CHANNEL

9. STEEL CHANNEL

10. CONCRETE CHANNEL

11. STEEL CHANNEL

12. CONCRETE CHANNEL

13. STEEL CHANNEL

14. CONCRETE CHANNEL

15. STEEL CHANNEL

16. CONCRETE CHANNEL

17. STEEL CHANNEL

18. CONCRETE CHANNEL

19. STEEL CHANNEL

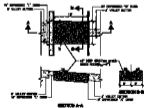
20. CONCRETE CHANNEL

STEEL CHANNEL - CASE 1

SEE DRAWING NO. 105



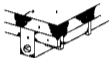
STEEL CHANNEL



STEEL CHANNEL

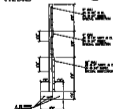


STEEL CHANNEL



1. A SECTION MADE IN SPREADER THE STEEL CHANNEL
2. A SECTION MADE IN SPREADER THE STEEL CHANNEL
3. A SECTION MADE IN SPREADER THE STEEL CHANNEL
4. A SECTION MADE IN SPREADER THE STEEL CHANNEL
5. A SECTION MADE IN SPREADER THE STEEL CHANNEL
6. A SECTION MADE IN SPREADER THE STEEL CHANNEL
7. A SECTION MADE IN SPREADER THE STEEL CHANNEL
8. A SECTION MADE IN SPREADER THE STEEL CHANNEL
9. A SECTION MADE IN SPREADER THE STEEL CHANNEL
10. A SECTION MADE IN SPREADER THE STEEL CHANNEL
11. A SECTION MADE IN SPREADER THE STEEL CHANNEL
12. A SECTION MADE IN SPREADER THE STEEL CHANNEL
13. A SECTION MADE IN SPREADER THE STEEL CHANNEL
14. A SECTION MADE IN SPREADER THE STEEL CHANNEL
15. A SECTION MADE IN SPREADER THE STEEL CHANNEL
16. A SECTION MADE IN SPREADER THE STEEL CHANNEL
17. A SECTION MADE IN SPREADER THE STEEL CHANNEL
18. A SECTION MADE IN SPREADER THE STEEL CHANNEL
19. A SECTION MADE IN SPREADER THE STEEL CHANNEL
20. A SECTION MADE IN SPREADER THE STEEL CHANNEL

STEEL CHANNEL



STEEL CHANNEL