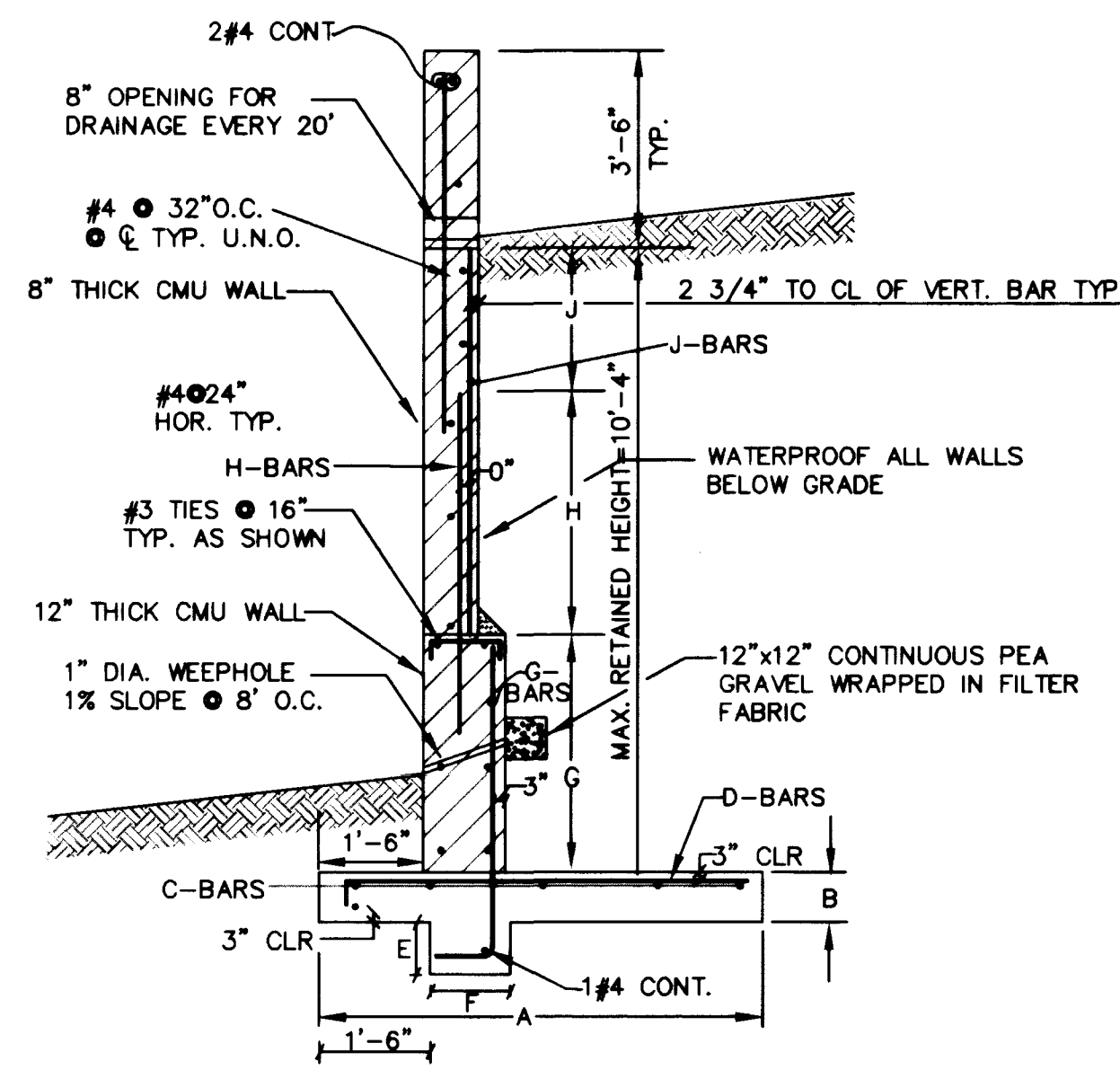
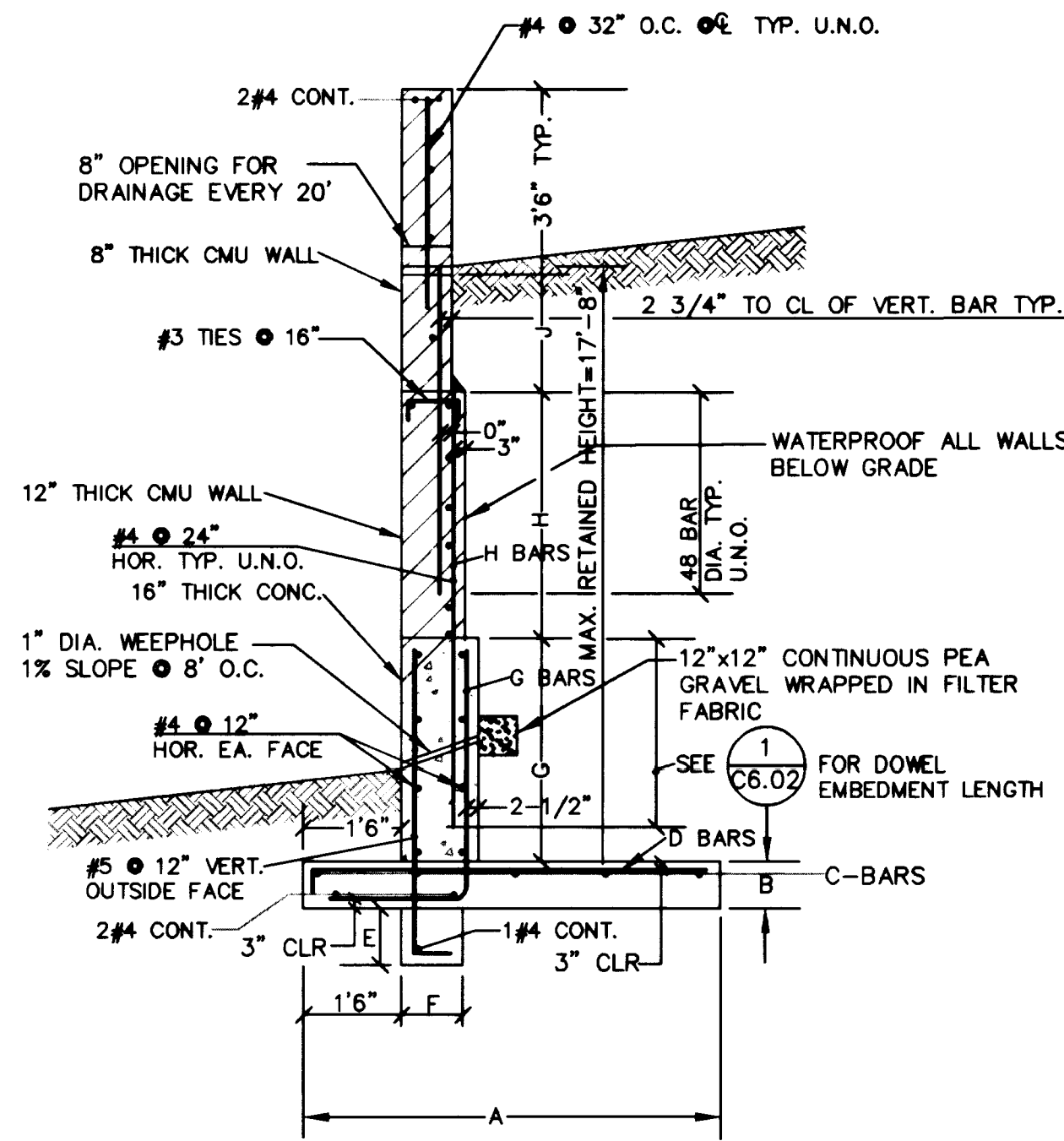


WALL SECTION - TYPE I



WALL SECTION - TYPE II



WALL SECTION - TYPE III

1

RETAINING WALL SCHEDULE - LOADING DOCK

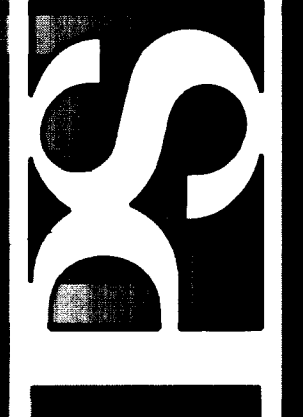
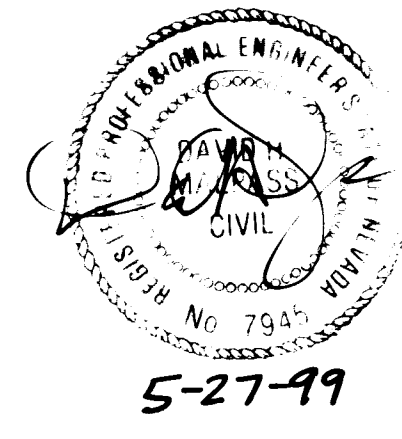
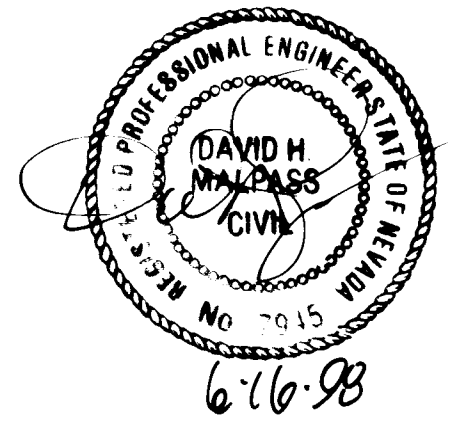
2

MAX RETAINED HEIGHT	A WIDTH OF FOOTING	B DEPTH OF FOOTING	C-BARS FOOTING REINF. (LONGITUDINAL)	D-BARS FOOTING REINFORCEMENT (HEEL-TOP)	E KEY DEPTH	F KEY WIDTH	REFERENCE DETAIL TYPE	G G-BARS	H H-BARS	J J-BARS
3'0"	3'0"	1'0"	3#5 CONTINUOUS	#5 @ 8"	N/A	N/A	TYPE I	N/A	VARIES #4 @ 24"	N/A
5'0"	3'0"	1'0"	3#5 CONTINUOUS	#5 @ 8"	N/A	N/A	TYPE I	N/A	4'0" #5 @ 24"	VARIES #4 @ 24"
6'4"	3'6"	1'0"	3#5 CONTINUOUS	#5 @ 8"	N/A	N/A	TYPE I	N/A	4'0" #5 @ 24"	VARIES #4 @ 24"
8'4"	5'0"	1'6"	4#7 CONTINUOUS	#7 @ 10"	NONE	NONE	TYPE II	3'0" #5 @ 8"	3'0" #5 @ 16"	VARIES #5 @ 24"
10'4"	5'0"	1'6"	4#7 CONTINUOUS	#7 @ 10"	1'0"	1'0"	TYPE II	4'0" #5 @ 8"	4'0" #5 @ 16"	VARIES #5 @ 24"
12'8"	6'0"	1'6"	5#7 CONTINUOUS	#7 @ 10"	1'6"	1'0"	TYPE III	4'0" #5 @ 8"	4'0" #5 @ 16"	VARIES #5 @ 24"
13'8"	7'0"	1'6"	5#7 CONTINUOUS	#7 @ 10"	1'6"	1'0"	TYPE III	4'0" #7 @ 8"	4'0" #5 @ 8"	VARIES #5 @ 16"
14'8"	7'6"	1'6"	5#7 CONTINUOUS	#7 @ 10"	1'6"	1'0"	TYPE III	5'0" #7 @ 8"	4'0" #5 @ 8"	VARIES #5 @ 16"
15'8"	8'0"	2'0"	5#7 CONTINUOUS	#7 @ 10"	1'6"	1'0"	TYPE III	5'0" #7 @ 8"	4'0" #5 @ 8"	VARIES #5 @ 16"
17'8"	9'6"	2'0"	8#7 CONTINUOUS	#8 @ 10"	1'6"	1'0"	TYPE III	7'0" #8 @ 8"	4'0" #7 @ 8"	VARIES #5 @ 16"

AVOID CUTTING UNDERGROUND UTILITY LINES. IT'S COSTLY.
Call before you Dig- 1-800-227-2600
UNDERGROUND SERVICE ALERT (U.S.A.)

AVOID OVERHEAD POWER LINE CONTACT
Call before you OVERHEAD 1-702-593-6111
NEVADA POWER ENVIRONMENT AND SAFETY SERVICES DEPARTMENT

MARTIN & MARTIN ASSUMES NO RESPONSIBILITY FOR EXISTING UTILITY LOCATIONS AND ELEVATIONS. THE UTILITIES SHOWN ON THIS DRAWING HAVE BEEN PLOTTED FROM THE BEST AVAILABLE INFORMATION. IT IS, HOWEVER, THE CONTRACTOR'S RESPONSIBILITY TO FIELD VERIFY THE LOCATION AND ELEVATION OF ALL UTILITIES PRIOR TO THE COMMENCEMENT OF ANY CONSTRUCTION. CONTRACTOR TO FIELD VERIFY ALL EXISTING SITE CONDITIONS PRIOR TO CONSTRUCTION. IF A CONFLICT EXISTS BETWEEN WHAT IS SHOWN ON THESE DRAWINGS AND WHAT EXISTS IN THE FIELD, THE CONTRACTOR IS TO NOTIFY THE ARCHITECT OR ENGINEER IMMEDIATELY.



PAUL STEELMAN LTD
ARCHITECTURE PLANNING
3330 W. DESERT INN RD.
LAS VEGAS, NEVADA 89102
PHONE 702-873-0221
FAX 702-367-3885



MARTIN & MARTIN
CIVIL ENGINEERS
1808 SOUTH JONES BLVD.
SUITE B
LAS VEGAS, NEVADA 89102
PHONE (702) 248-8000

THE RESORT AT SUMMERLIN
HOTEL, CASINO & ENTERTAINMENT COMPLEX
LAS VEGAS, NEVADA
DATE: 2-11-98
SCALE: N/A
JOB NO.: 1979
REVISION:

SHEET TITLE AND LOCATION
RETAINING WALL DETAILS

SHEET NUMBER
C6.02A
SHEET 32 OF 32
REVISION
ISSUED FOR CONTRACT BULLETIN #8
2-11-98
107-V2.8.30

