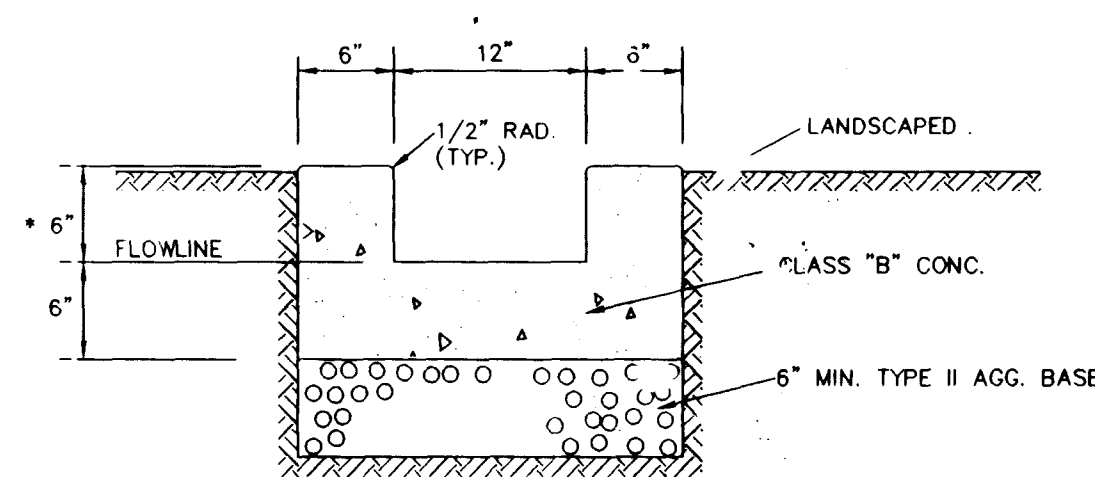


* DIMENSION MAY VARY IN ORDER THAT TOP OF CHANNEL CORRESPONDS WITH TOP OF ADJACENT CURB OR SIDEWALK



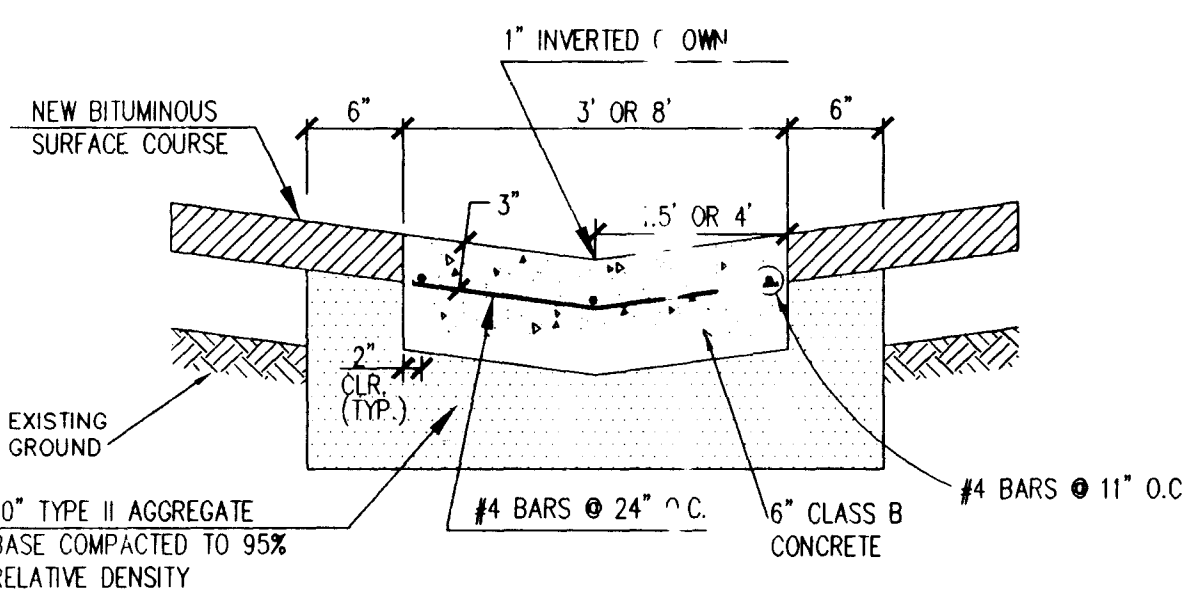
NOTES:

1. EXPANSION JOINTS REQUIRED AT LOCATIONS WHERE CHANNEL MEETS CURB.
2. WEAKENED PLANE JOINTS REQUIRED AT 10' MAX. SPACING.

2' CONCRETE CHANNEL

NTS

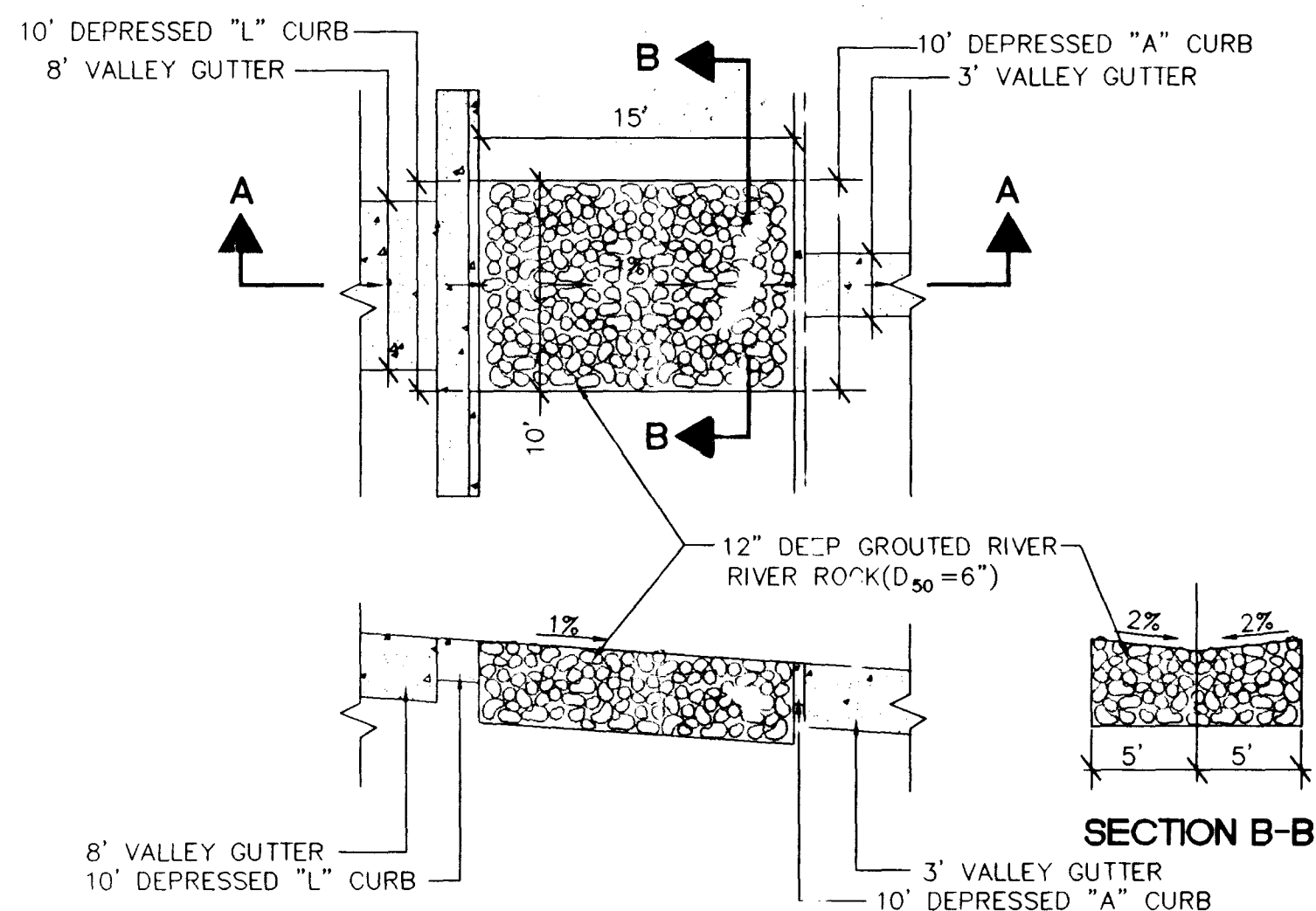
1 (C5.01)



3' AND 8' VALLEY GUTTER

NTS

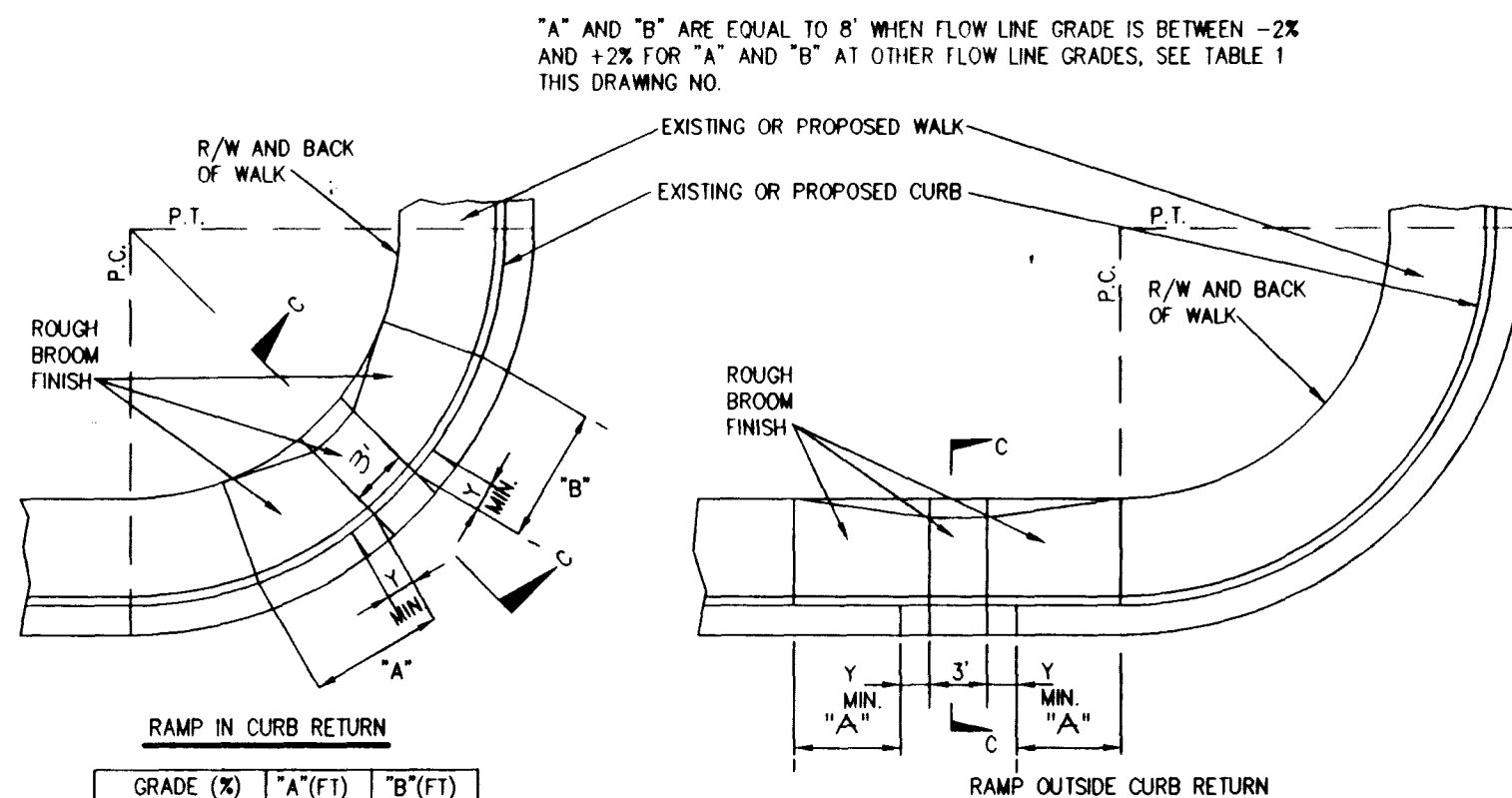
2 (C5.01)



RIP-RAP CHANNEL

NTS

3 (C5.01)



RAMP IN CURB RETURN

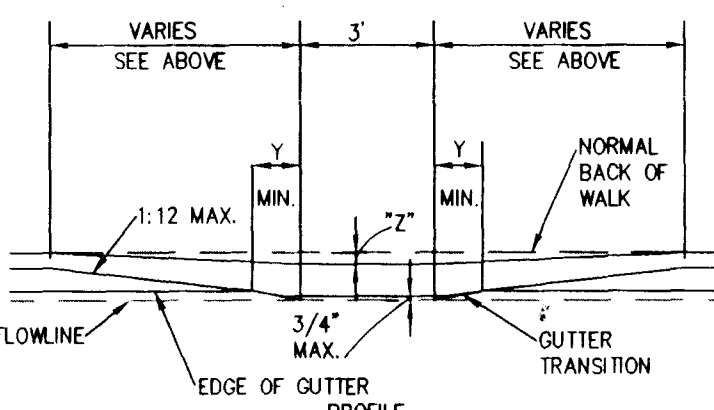
GRADE (%)	"A"(F)	"B"(F)
-6 TO -5.01	4.5	21.5
-5 TO -4.01	4.5	15.0
-4 TO -3.01	4.5	12.0
-3 TO -2.01	4.5	9.5
-2 TO 2	8.0	8.0
2.01 TO 3	9.5	4.5
3.01 TO 4	12.0	4.5
4.01 TO 5	15.0	4.5
5.01 TO 8	21.5	4.5

TABLE 1. TRANSITION LENGTHS FOR 1:12 SIDE SLOPES

SIDEWALK WIDTH (F)	"Y"(IN) MIN.	"Z"(IN) MIN.
4	2.75	3.50 (CASE #1)
5	2.00	2.75
6	1.25	2.00

TABLE 3. DEPTH OF DEPRESSION

NOTE: CHARTS APPLY TO 6" CURB FACE IF CURB HAS GREATER THAN A 6" CURB FACE A SPECIAL DESIGN IS REQUIRED.



CASE III TO BE USED ONLY WHEN APPROVED BY THE ENGINEER

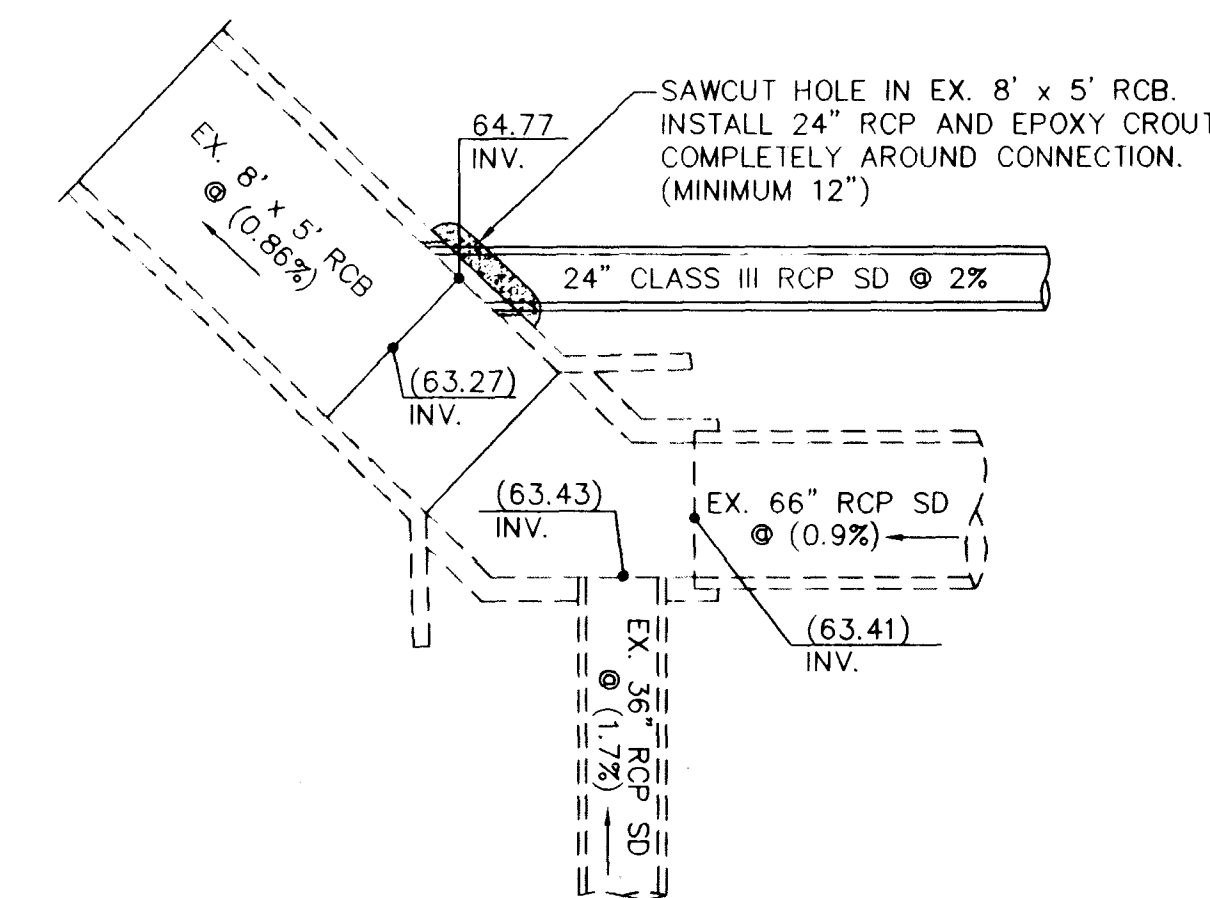
NOTES:

1. SIDEWALK RAMP WITHIN CURB RETURN SHALL BE LOCATED AT THE MIDPOINT OF CURB RETURN UNLESS OTHERWISE APPROVED.
2. SIDEWALK RAMPS OUTSIDE OF THE CURB RETURN SHALL BE LOCATED ADJACENT TO THE RETURN.
3. RAMPS SHALL BE CONSTRUCTED WITH A ROUGH BROOM FINISH TRANSVERSE TO THE SLOPE OF THE RAMP.
4. WHEN CONSTRUCTING RAMP WHERE CURB AND GUTTER EXISTS, COMPLETELY REMOVE INTERFERING PORTIONS OF EXISTING CURB AND GUTTER.
5. AN OPTIONAL DETECTABLE WARNING CONSISTING OF RAISED TRUNCATED DOMES WITH A DIAMETER OF NOMINAL 0.9 IN. A HEIGHT OF NOMINAL 0.2 IN AND A CENTER-TO-CENTER SPACING OF NOMINAL 2.35 IN AND CONTRASTING VISUALLY WITH ADJOINING SURFACES MAY BE PLACED ON RAMP EXTENDING THE FULL WIDTH AND DEPTH OF THE RAMP.

SIDEWALK RAMP - CASE I

SUMMERLIN STD. DWG. NO. 5-TT

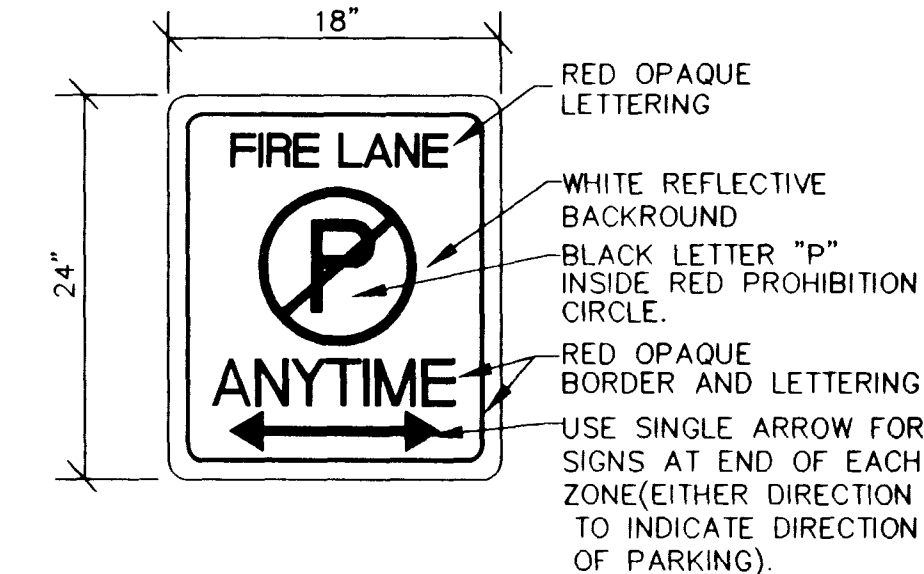
4 (C5.01)



STORM DRAIN CONNECTION

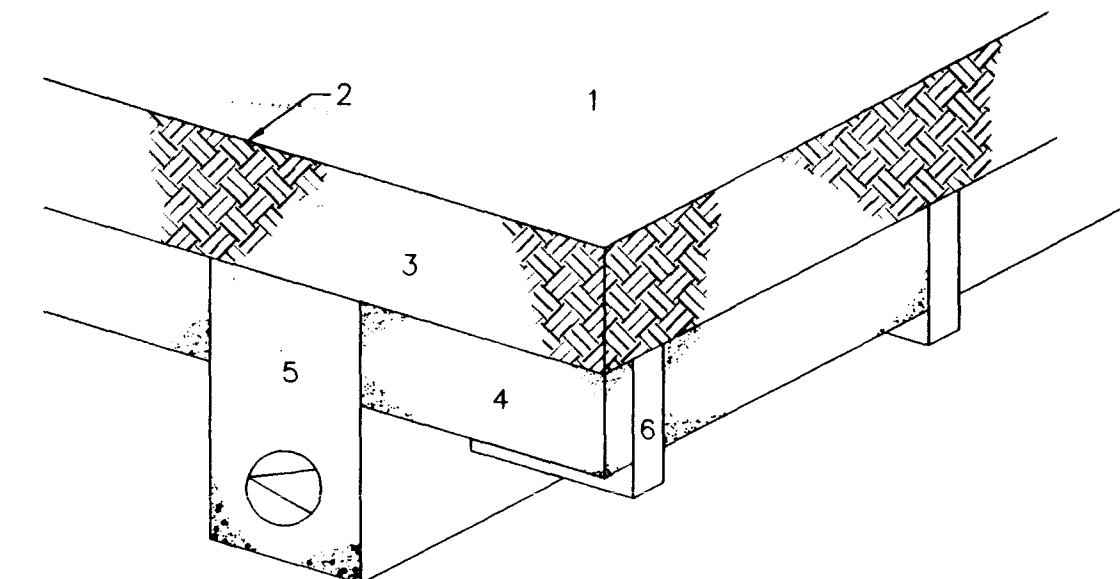
NTS

5 (C5.01)



'FIRE LANE' SIGN

6 (C5.01)

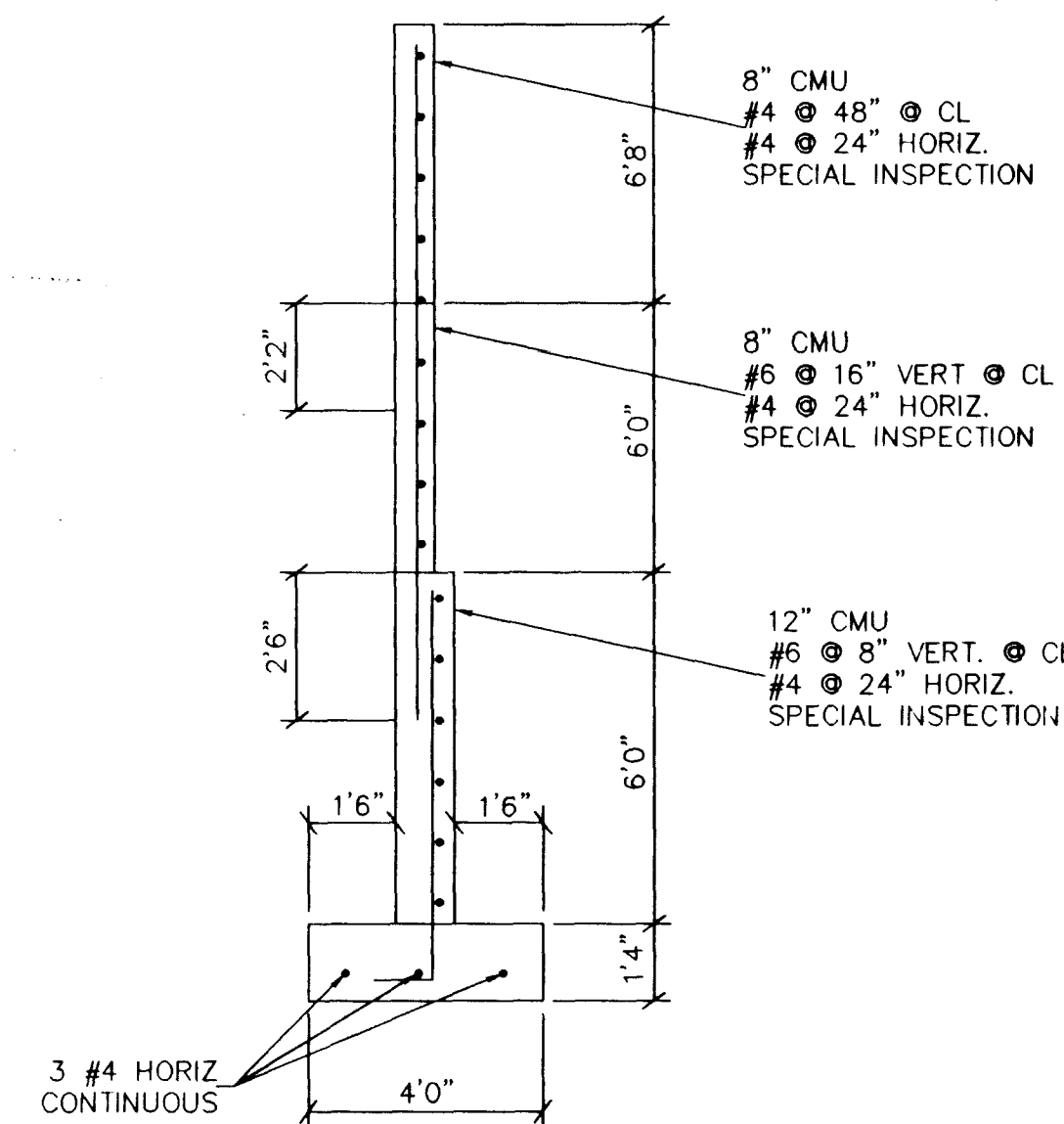


1. A SPECIFIED SEEDING OR SPECIALIST TURF SYSTEM. EITHER:
 SEED
 PRE-GERMINATED SEED
 STOLONS/SPRIGS
 WASHED TURF/SOD
2. 1/2 IN. OF NETLON R200 ROOTZONE TOPPING (EFFECTIVELY AT200 WITHOUT THE MESH) SUPPLIED AS PART OF THE NETLON ADVANCED TURF SYSTEM (NOT REQUIRED WITH THE WASHED TURF OPTION)
3. 6 IN. OF NETLON ADVANCED TURF AT200 ROOTZONE. 4 INCHES WILL BE SUITABLE FOR THE MAJORITY OF LOCATIONS WHILST 6 INCHES WILL PROVIDE THE NECESSARY DRAINAGE AND HEALTH REQUIRED FOR AREAS SUBJECTED TO PARTICULARLY INTENSIVE USE OR HIGH RAINFALL.
4. SUB GRADE LIGHTLY CULTIVATED TO A DEPTH OF 6 IN. OR REPLACED WITH 4 IN. OF NETLON R200 ROOTZONE IF THE SUB GRADE IS A POOR NUTRITIONALLY DEFICIENT SOIL, A HEAVY CLAY OR SUBSOIL. THE SUB GRADE FOR NATION TO BE SMOOTHLY GRADED TO FOLLOW THE FINISHED SURFACE PROFILE.
5. DRAINAGE FOR NARROW WALKWAYS TO COMPRISE A SINGLE PIPE DRAIN IN A TRENCH, FILLED WITH 1/8 TO 1/4 IN WASHED, NON-CALCAREOUS GRAVEL, ALONG THE LENGTH OF WALKWAY AND DISCHARGING TO A SUITABLE OUTFALL. COARSE DRAINAGE GRAVEL MAY BE USED E.G. 1/2 IN. BUT THIS MUST BE BLINDED WITH 2 IN. OF COARSE SAND (ASTM SIEVE 18 TO 10). THE MINIMUM GRADIENT OF ALL PIPES TO BE 1%.
6. DRAINAGE FOR WIDER AREAS TO COMPRISE 2 IN. x 10 IN. DEEP SLIT DRAINS OR ADDITIONAL PIPES AT 3 TO 5 FT. SPACING LEADING TO THE MAIN DRAINAGE SYSTEM. ADVICE ON SUITABLE DRAINAGE LAYOUTS IS AVAILABLE FROM YOUR LOCAL NETLON ADVANCED TURF DISTRIBUTOR.

NETLON ADVANCED TURF SYSTEM

(FIRE LANE)

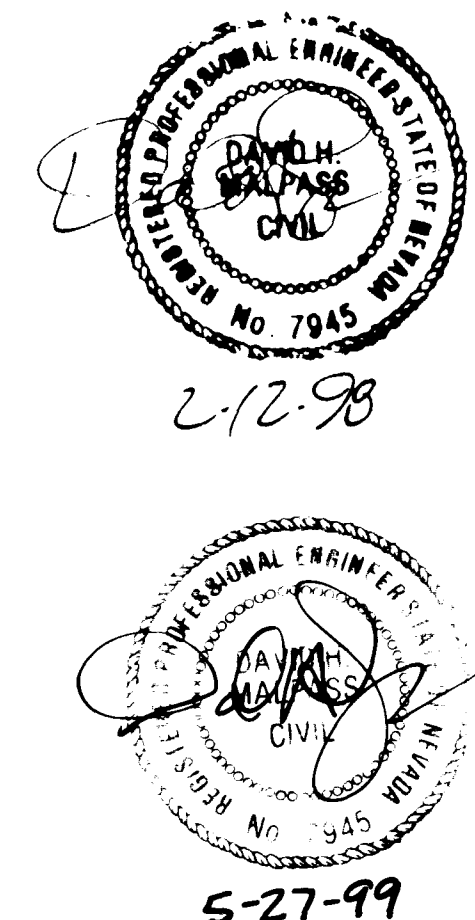
7 (C5.01)



ELECTRICAL YARD CMU SCREEN WALL

NTS

8 (C5.01)



PAUL STEELMAN LTD
ARCHITECTURE PLANNING

MARTIN & MARTIN
CIVIL ENGINEERS

THE RESORT AT SUMMERLIN
HOTEL, CASINO & ENTERTAINMENT COMPLEX

DATE: 2-11-98
REVISION: 1
REASON: REVISED STORM DRAIN CONNECTION

DETAIL SHEET

SHEET NUMBER
C5.01
SHEET 28 OF 32
ISSUED FOR CONTRACT
BULLETIN #8
107-V-28-30



PAUL STEINMAN LTD
STEELWORKERS - LONDON

WATER & AIR

STEELWORKERS - LONDON

STEELWORKERS - LONDON

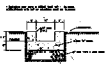
STEELWORKERS - LONDON

STEELWORKERS - LONDON

STEELWORKERS - LONDON

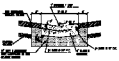
STEELWORKERS - LONDON

STEELWORKERS - LONDON

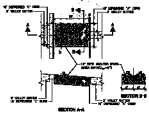


SECTION THROUGH CONCRETE CHANNEL

CONCRETE CHANNEL



2 AND 4 VALLEY GUTTER



DR-DIP CHANNEL



GENERAL DRAIN - CASE 1



STEEL DRAIN CONNECTION

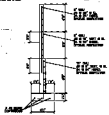


THE LAMP SON



1. SECTION THROUGH SPREADER LAMP SON, CASE 1
2. SECTION THROUGH SPREADER LAMP SON, CASE 2
3. SECTION THROUGH SPREADER LAMP SON, CASE 3
4. SECTION THROUGH SPREADER LAMP SON, CASE 4
5. SECTION THROUGH SPREADER LAMP SON, CASE 5
6. SECTION THROUGH SPREADER LAMP SON, CASE 6
7. SECTION THROUGH SPREADER LAMP SON, CASE 7
8. SECTION THROUGH SPREADER LAMP SON, CASE 8
9. SECTION THROUGH SPREADER LAMP SON, CASE 9
10. SECTION THROUGH SPREADER LAMP SON, CASE 10

ANTILION ADVANCED TRIP SYSTEM OVER LAND



ELECTRICAL WARD ONE SCREEN WALL