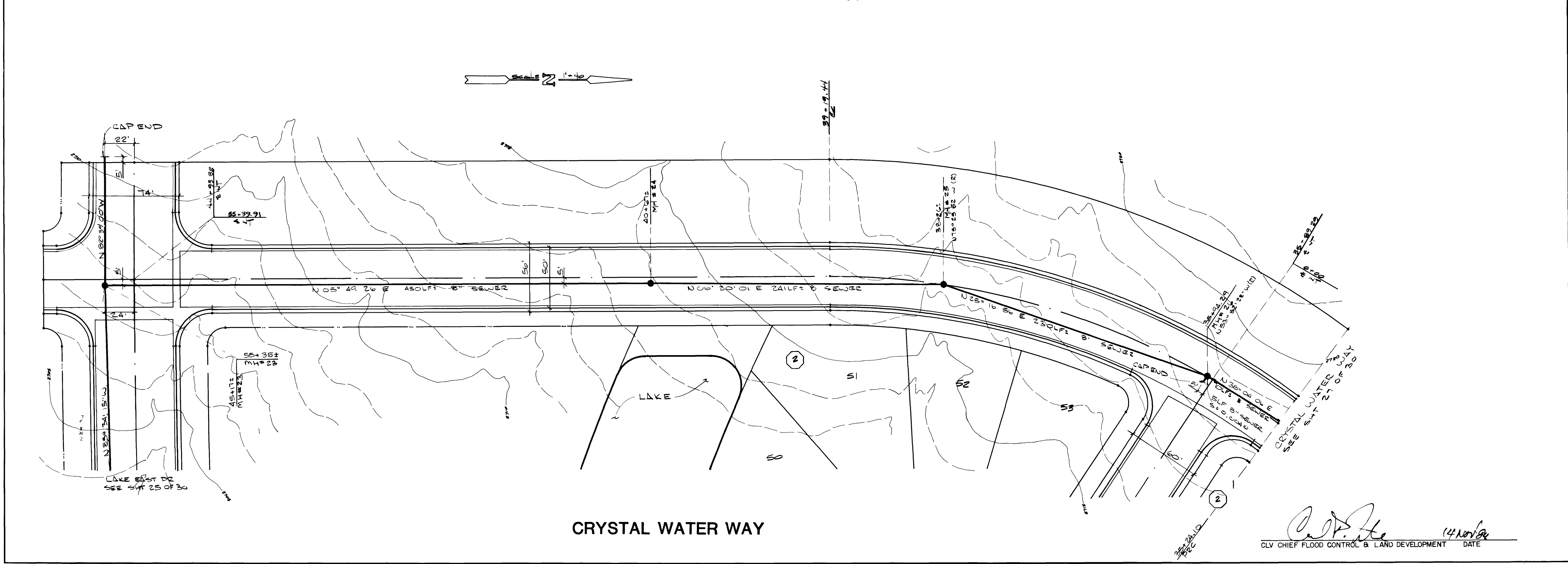


REV	DATE	BY	REVISION
1	1/09/85	DWR	REV'D FROM MH23 TO MH 24
2	3/01/85	DWR	REV'D FROM 102' TO 110' & 120' TO 130'

ENGINEERS & SURVEYORS
 INCORPORATED
 7022 W. CHARLESTON BLVD
 LAS VEGAS, NEVADA 89117
 PHONE: 702 / 363-6415

SUBMITTED BY
Paul G. Colburn
 11/2/84



TITLE
SEWER PLAN & PROFILE
CRYSTAL WATER WAY

PROJECT
THE LAKES at WEST SAHARA PHASE IA

WO NO 830802
 BY D. MAXFIELD
 DATE 10/84
 SCALE HORIZ. 1"=40'
 VERTI 1"=4'

SHEET
26
 OF 20 SHEETS

CLV CHIEF FLOOD CONTROL & LAND DEVELOPMENT DATE 14 Nov 84

CRYSTAL WATER WAY

4247

307Y-1933-1A

