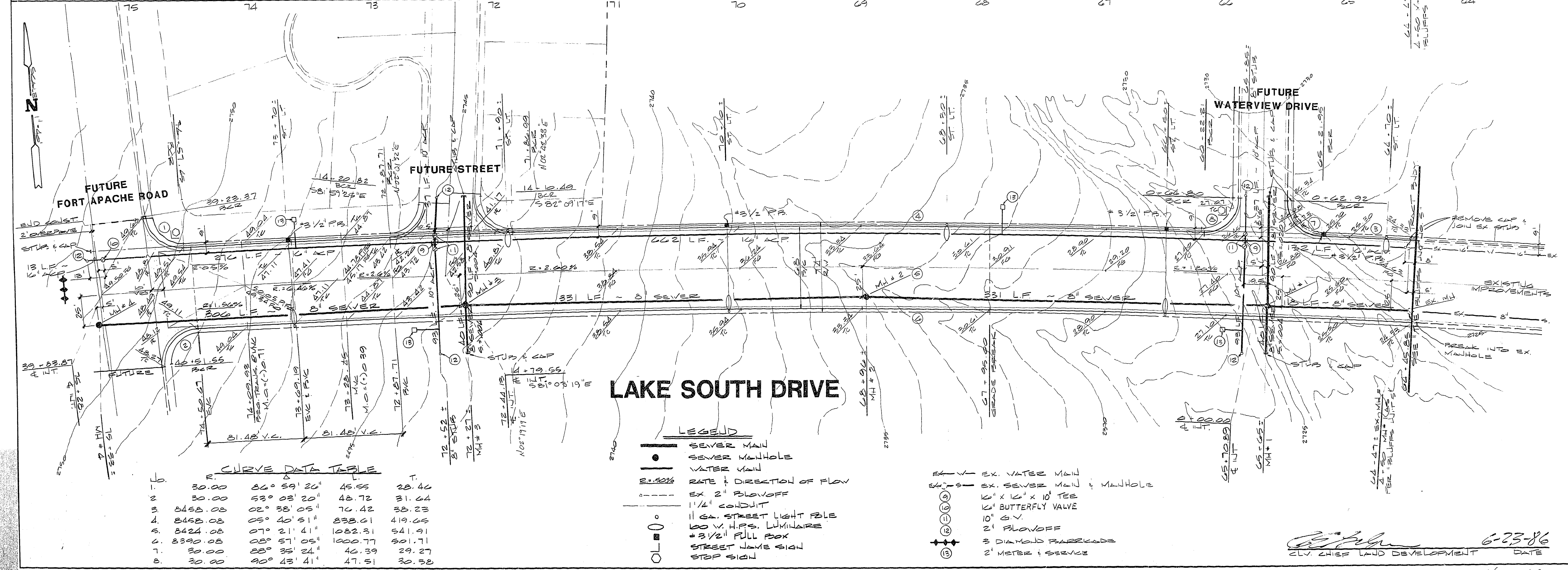


REV	DATE	BY	REVISION
1	5-12-86	PLG	COVER PIPES 4" AND 6" TO 2" DIA. TO 18" DIA. WITH 18" DIA. CHAMFERED ENDS
2	5/22/86	T.B	TO MATCH WITH SEWER
3	6-9-86	PLG	ADD. OF VERTICAL CURVE
4	6-9-86	PLG	REVISED VERTICAL CURVE
5	7-15-86	PLG	ADD. OF 2 WATER METERS

ENGINEERS & SURVEYORS INCORPORATED
 7022 W. CHARLESTON BLVD.
 LAS VEGAS, NEVADA 89117
 TELEPHONE: 702 / 363-6415

SUBMITTED BY: *Table 5*

STATE OF NEVADA
 PAUL E. HARRIS
 REGISTERED PROFESSIONAL ENGINEER
 NO. 5915



TITLE: STREET PLAN & PROFILE
 LAKE SOUTH DRIVE: STA. 64+45.85 TO FORT APACHE ROAD

PROJECT: THE LAKES at West Sahara Phase 7

WO NO. 4010

BY: PLG

DATE: 3/86

SCALE: HORIZ. - 1"=40'
 VERT. - 1"=4'

SHEET: 2
 OF 2 SHEETS

6-23-86
 CLV, CHIEF LAND DEVELOPMENT

167-7
 107X-1933-7