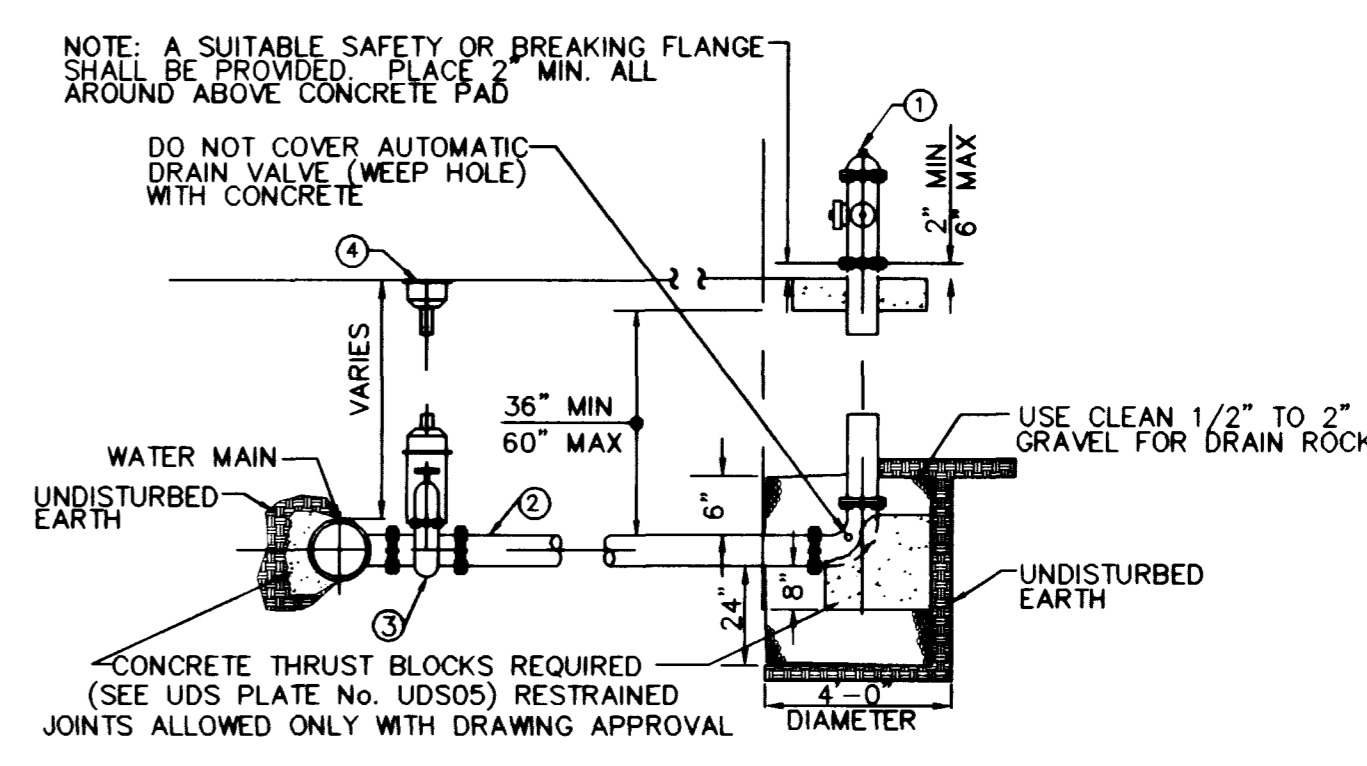
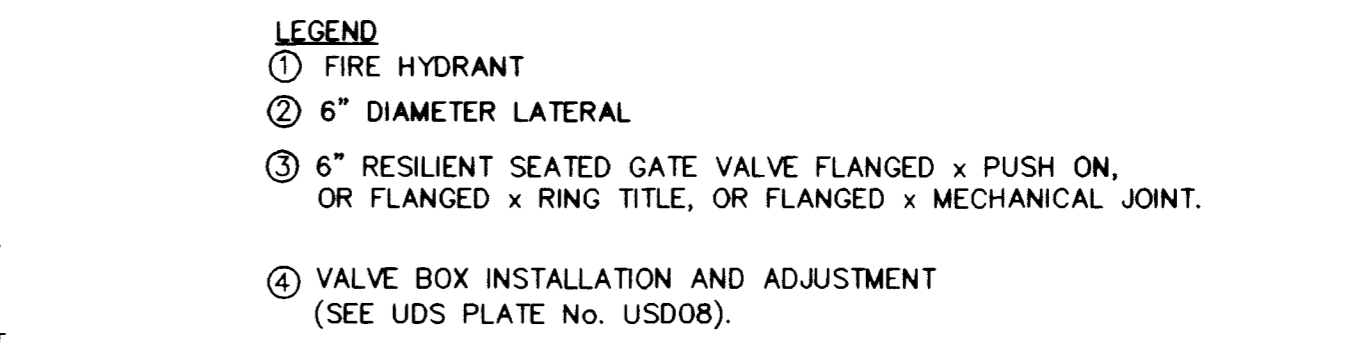




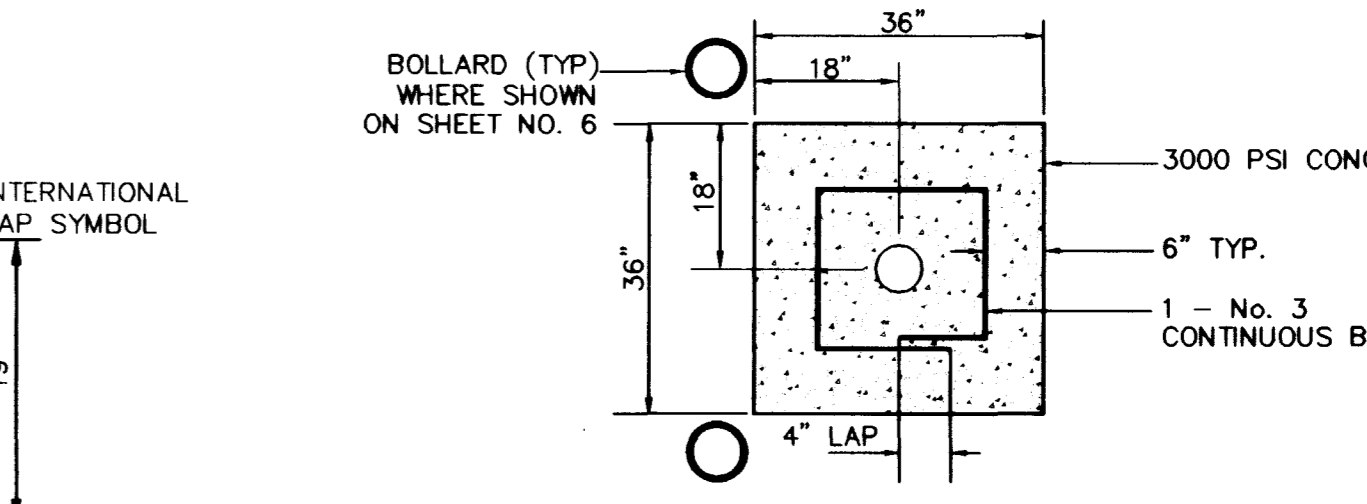
No.	Date	Revisions
1	8/28/97	REVISIONS PER CITY OF LAS VEGAS COMMENTS
2	5/21/97	REVISIONS PER CITY OF LAS VEGAS COMMENTS
3	3/19/97	REVISIONS PER CITY OF LAS VEGAS COMMENTS



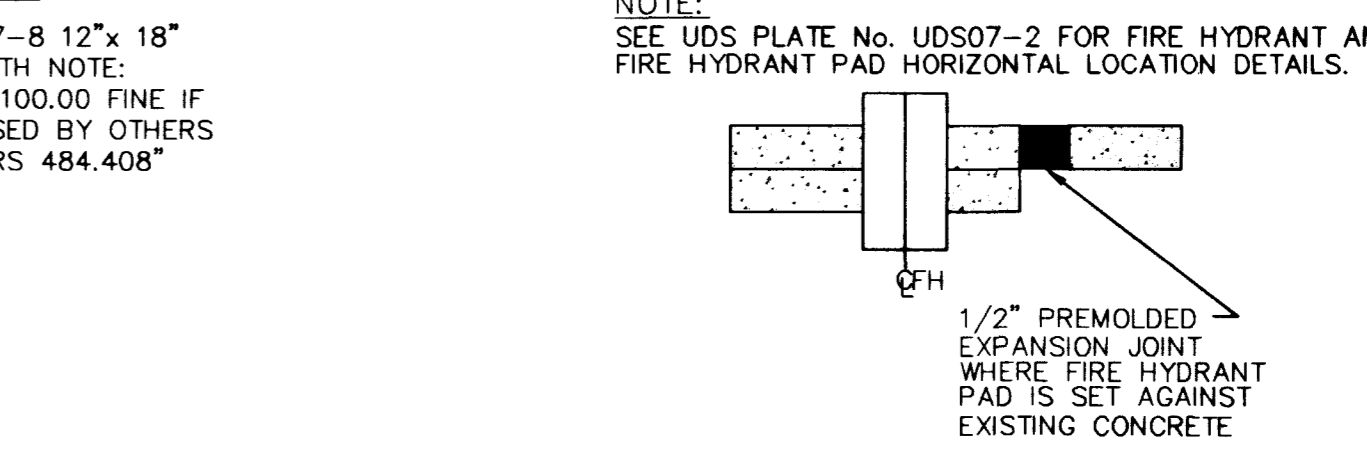
**TYPICAL 3" PAVING SECTION**  
 N.T.S.  
 NOTE: SUBGRADE PREPARATION SHALL BE CONSISTENT WITH THE SOILS REPORT PREPARED BY TECH CENTER ASSOCIATES, DATED MAY 19, 1995 JOB NO. 4125J121



**TYPICAL 2" PAVING SECTION**  
 N.T.S.  
 NOTE: SUBGRADE PREPARATION SHALL BE CONSISTENT WITH THE SOILS REPORT PREPARED BY TECH CENTER ASSOCIATES, DATED MAY 19, 1995 JOB NO. 4125J121



**TYPICAL HANDICAP PARKING STALL**

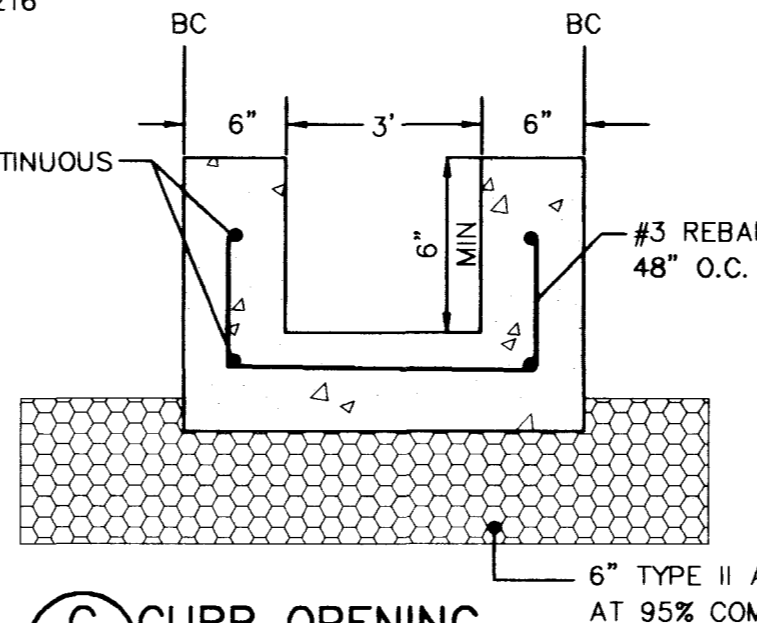


- NOTES:**
- NO HYDRANT SHALL BE LOCATED WITHIN 25 FEET OF ANY STRUCTURE OR 5 FEET OF A DRIVEWAY, POWER POLE, LIGHT STANDARD, OR ANY OTHER OBSTRUCTION OR WITHIN FIFTEEN (15) FEET OF A CURB RETURN OR DRIVEWAY WITHIN A COMMERCIAL OR INDUSTRIAL AREA. FOR WALLS, FENCE AND PLANTER LOCATIONS, A PERIMETER AROUND THE HYDRANT MEASURING A MINIMUM OF 3 FEET FROM ITS CENTER SHALL BE MAINTAINED CLEAR OF ALL OBSTRUCTIONS AT ALL TIMES. HYDRANTS MUST BE LOCATED A MINIMUM OF 6 FEET AWAY FROM THE BEGINNING OF A TURNING RADIUS.
  - ALL WORK SHALL BE DONE IN STRICT ACCORDANCE WITH THE CITY OF LAS VEGAS FIRE DEPARTMENT "HYDRANT SPECIFICATIONS", "HYDRANT INSTALLATION SPECIFICATIONS" AND ORDINANCE No. 3318, CLARK COUNTY ORDINANCE No. 1167, NFA No. 24 LATEST EDITION AND THE UNIFORM FIRE CODE LATEST EDITION.
  - 6" DIAMETER FIRE HYDRANT LATERAL SHALL BE SAME CLASS AND TYPE OF MATERIAL AS THE DISTRIBUTION MAIN.
  - DUCTILE IRON PIPE TO BE ENCASED WITH EIGHT MILS THICK POLYETHYLENE FILM.
  - PRIVATE FIRE HYDRANTS SHALL BE PAINTED RED.

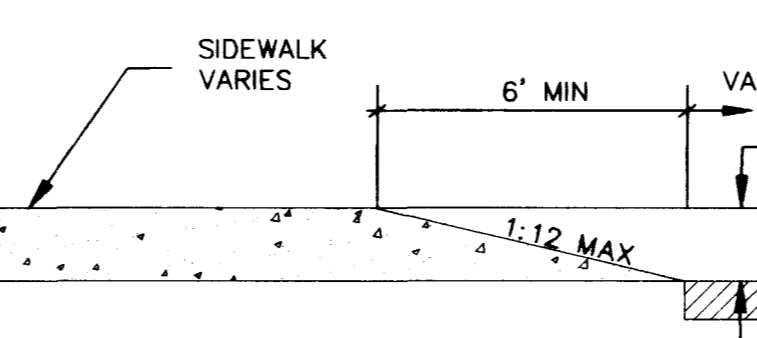
**HYDRANT ASSEMBLY DETAIL**



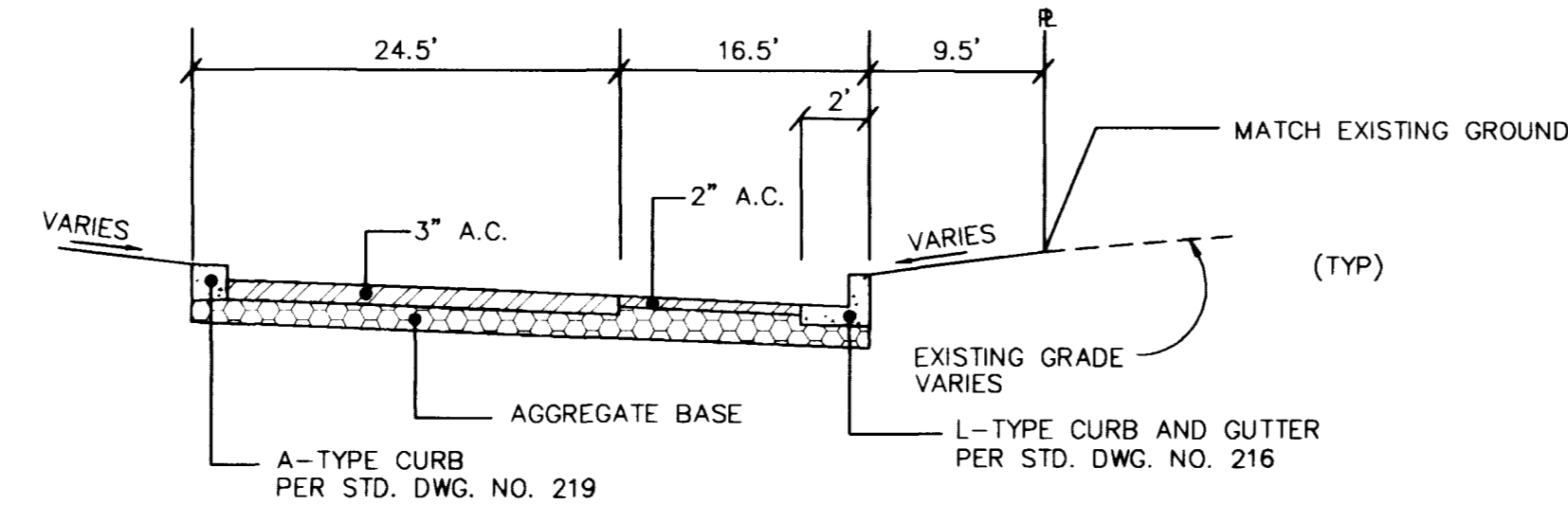
**TYPICAL BOLLARD**  
 N.T.S.



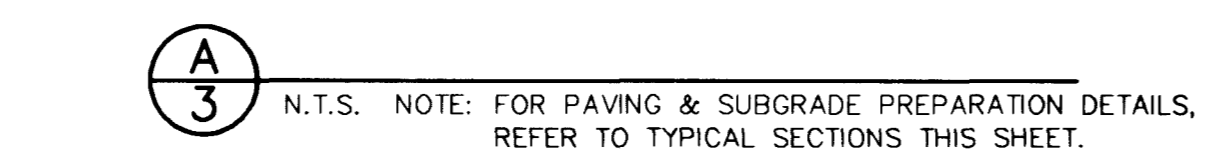
**C CURB OPENING DETAIL**  
 N.T.S.



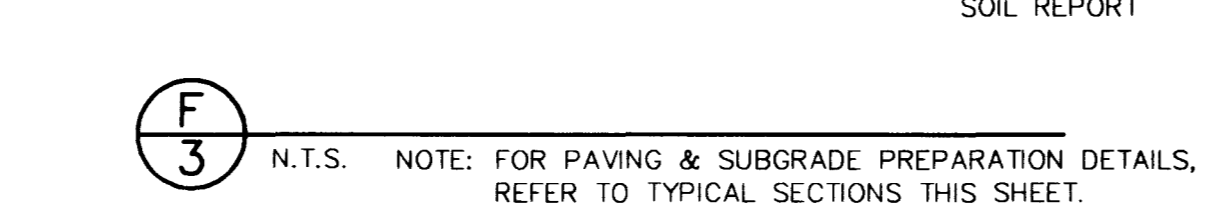
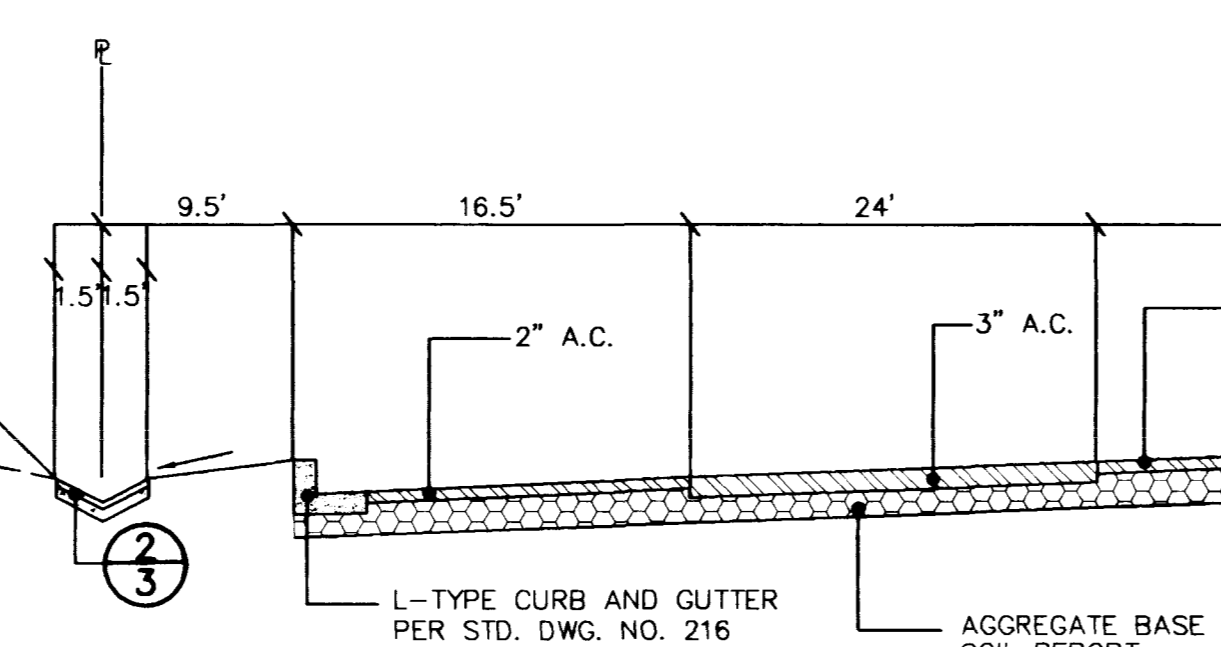
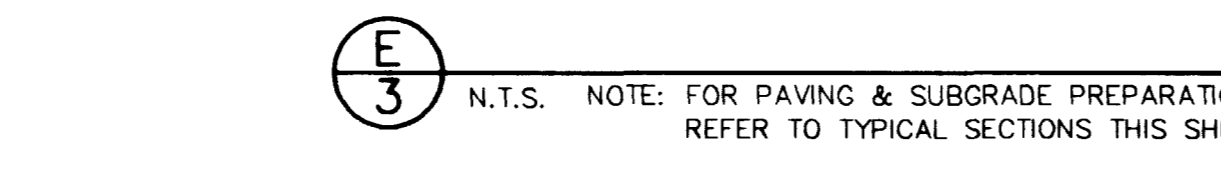
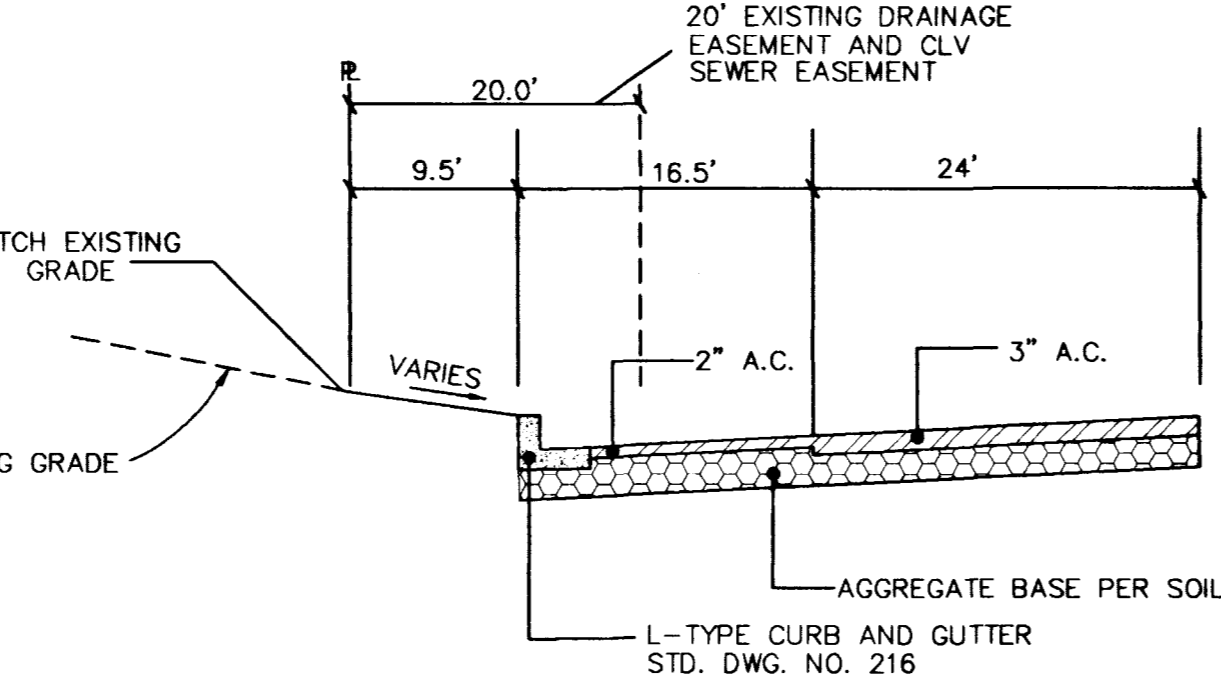
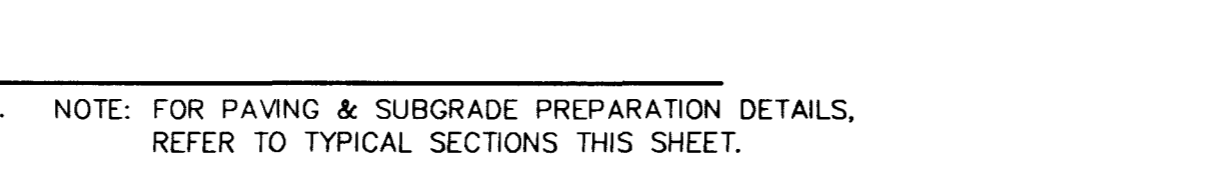
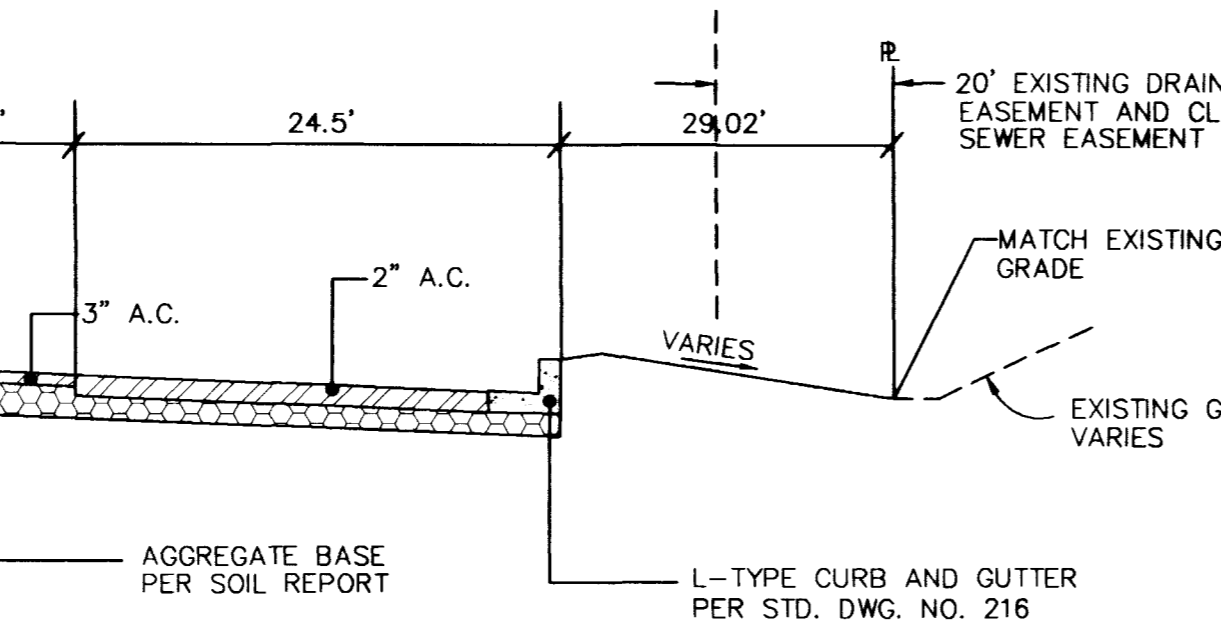
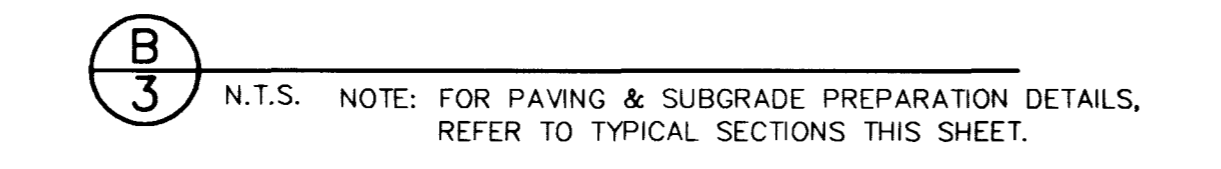
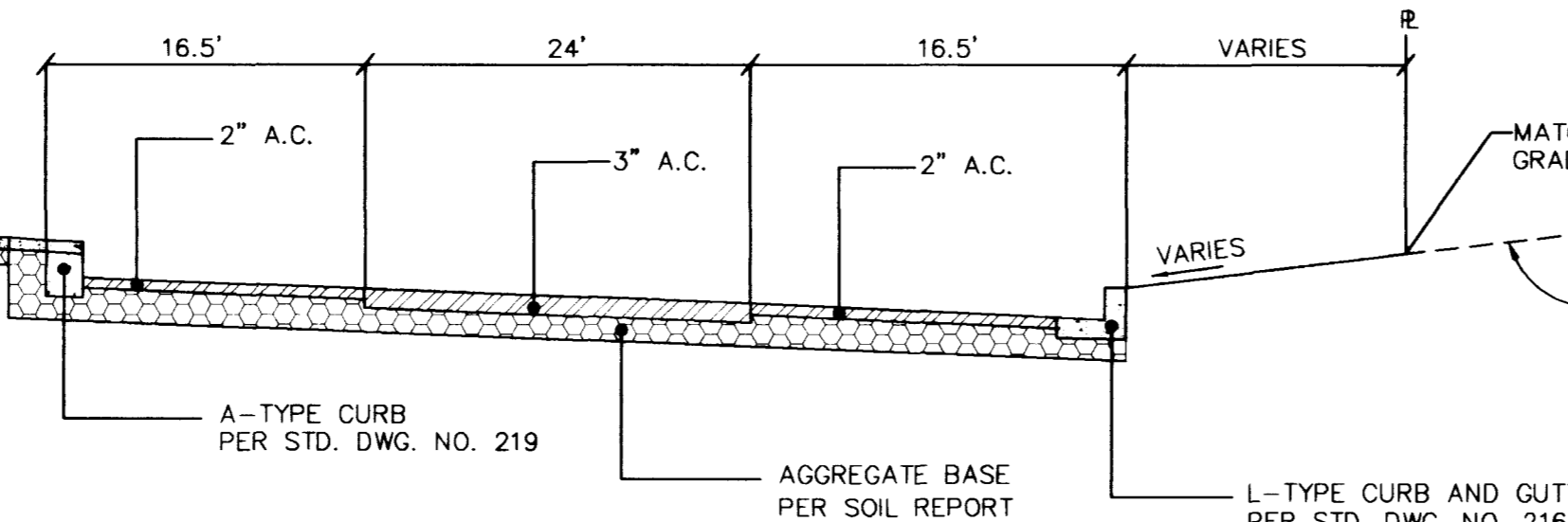
**G SIDEWALK RAMP**  
 N.T.S.



**1 TYPICAL WATERLINE TRENCH DETAIL**  
 N.T.S.



**2 3'-WIDE VALLEY GUTTER DETAIL**

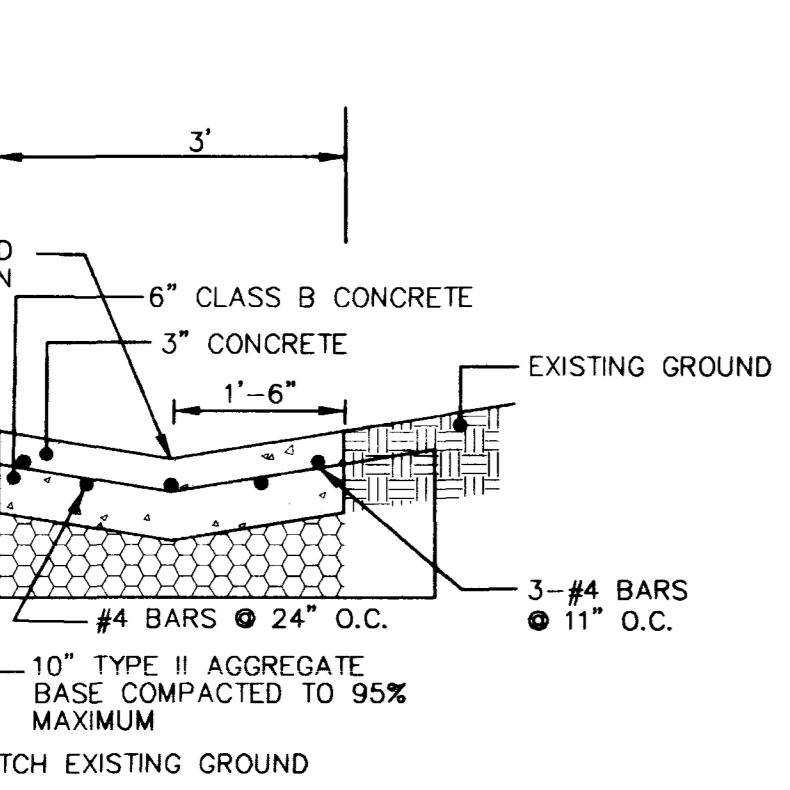


**NOTE:**  
 INSTALLATION SHALL CONFORM TO THE UNIFORM DESIGN AND CONSTRUCTION STANDARDS FOR WATER DISTRIBUTION SYSTEMS.

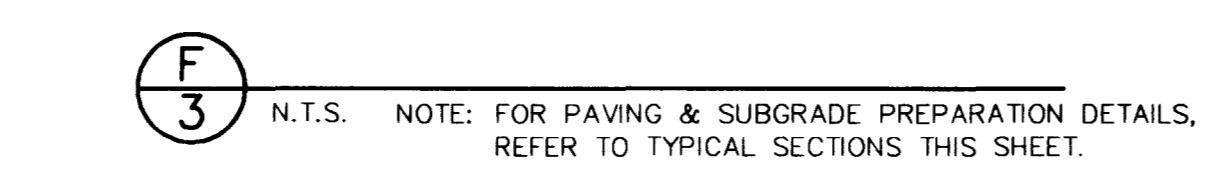
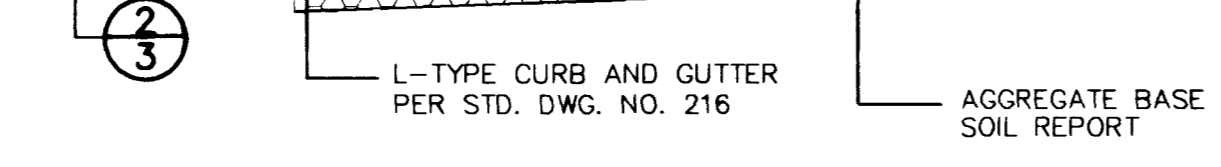
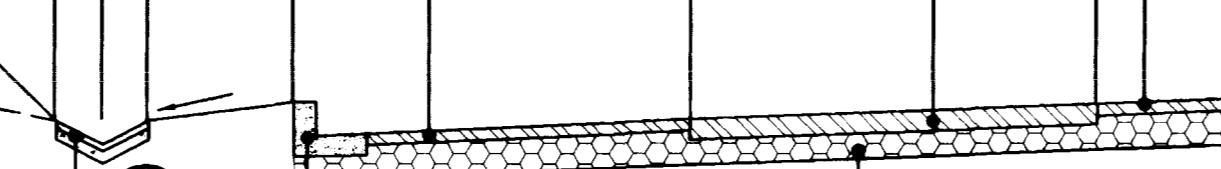
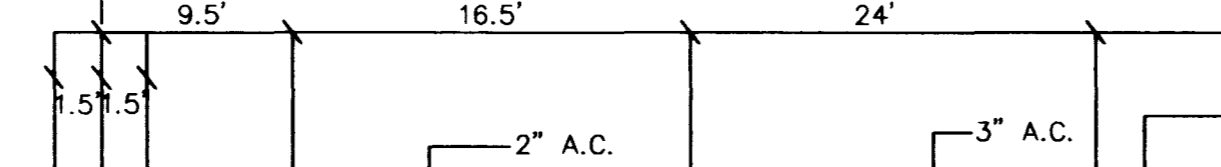
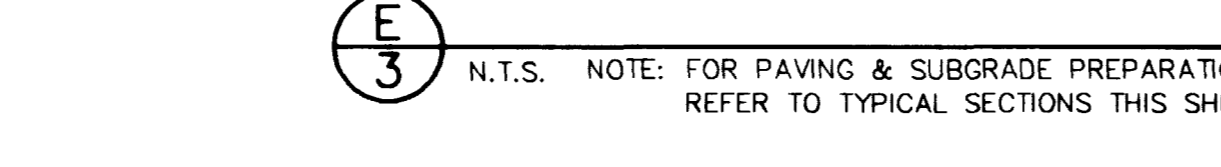
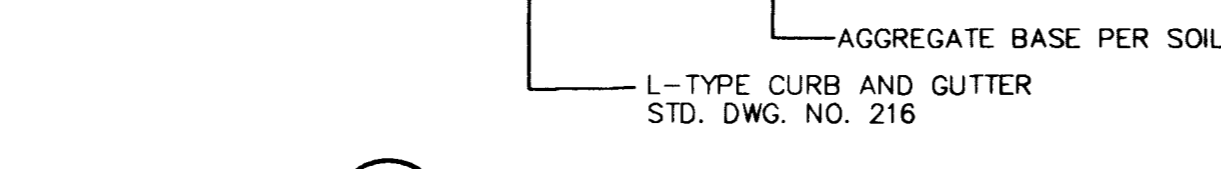
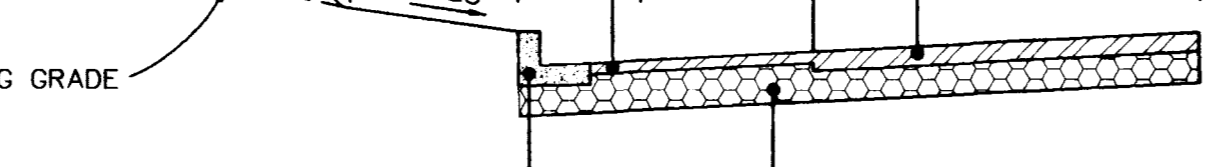
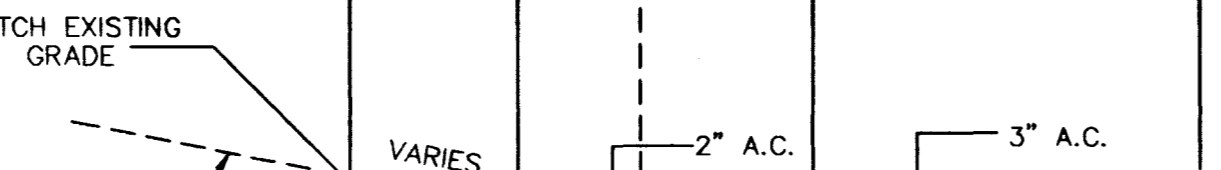
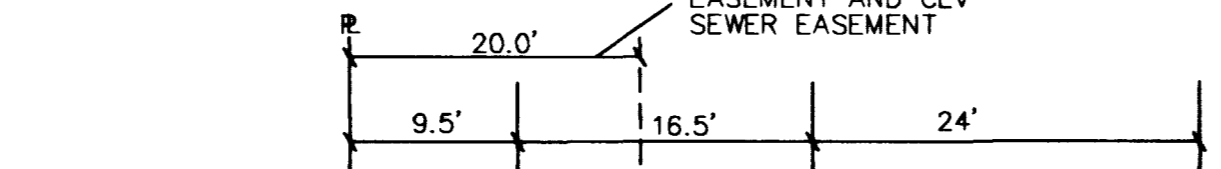
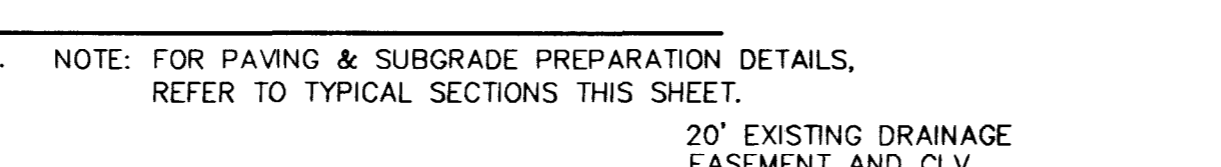
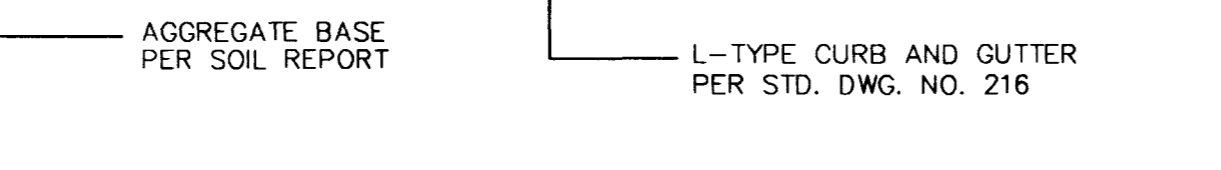
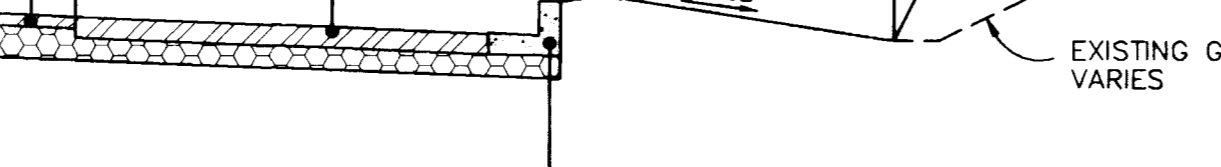
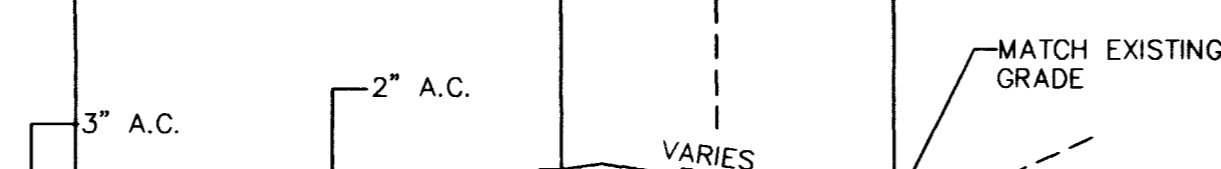
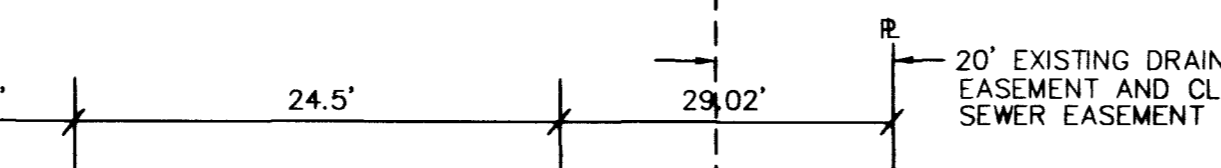
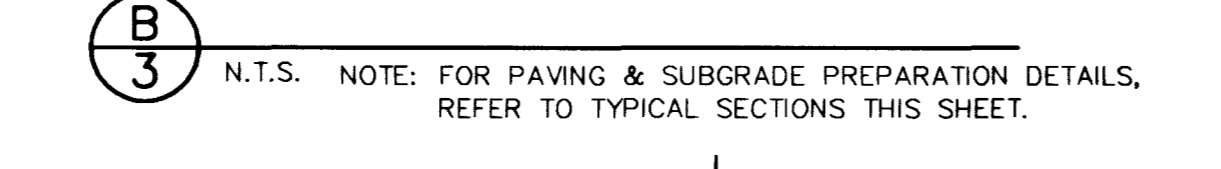
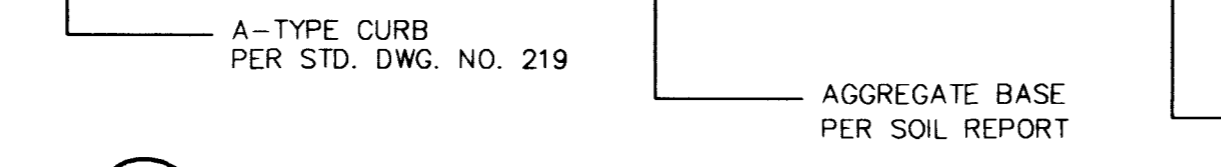
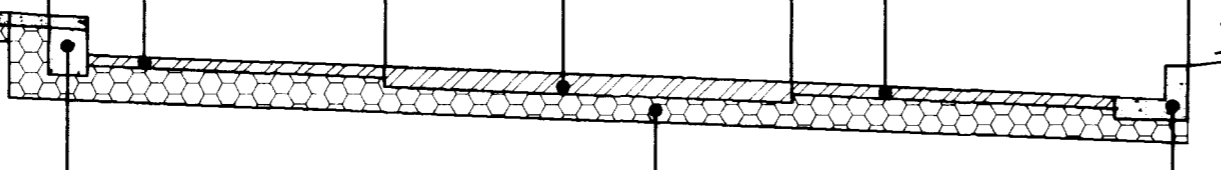
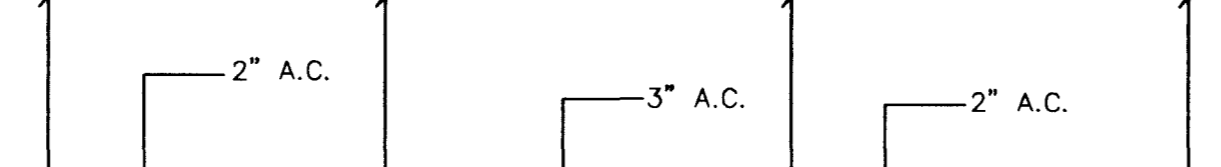
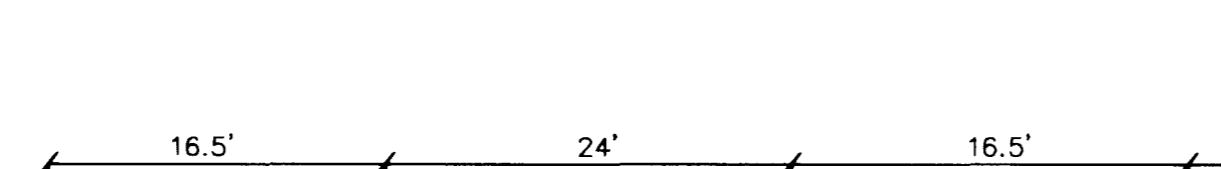
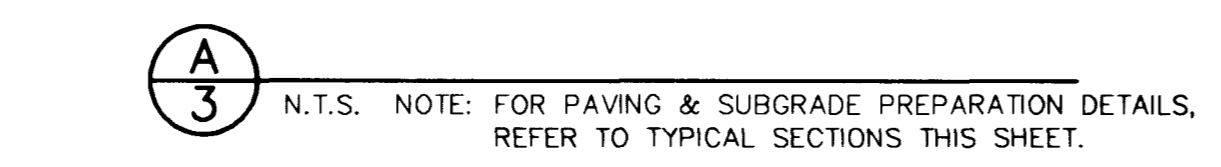
- LEGEND**
- GRANULAR BACKFILL, SELECTED BACKFILL TYPE II OR MODIFIED TYPE II AGGREGATE BASE BACKFILL COMPACT TO 85% (95% NDOT) OF MAXIMUM DENSITY.
  - PIPE ZONE TYPE II OR MODIFIED TYPE II AGGREGATE BASE BACKFILL COMPACT TO 90% (95% NDOT) OF MAXIMUM DENSITY.
  - PIPE BEDDING TYPE II OR MODIFIED TYPE II AGGREGATE BASE BACKFILL COMPACT TO 90% OF MAX. DENSITY.

- NOTES:**
- ACCEPTABLE METHODS OF COMPACTION**
    - BEDDING AND PIPE ZONE AREAS:** FLOODING AND JETTING, IF AGENCY APPROVED, OR MECHANICAL COMPACTION.
    - ABOVE PIPE ZONE:** FLOODING AND JETTING OR MECHANICAL COMPACTION.
  - TRENCH EXCAVATION SHALL COMPLY WITH THE CURRENT REGULATIONS AS DETERMINED BY THE NEVADA OCCUPATIONAL SAFETY AND HEALTH ADMINISTRATION.
  - REFERENCE: UNIFORM STANDARD SPECIFICATIONS FOR PUBLIC WORKS CONSTRUCTION OFF-SITE IMPROVEMENTS CLARK COUNTY AREA NEVADA, LATEST EDITION OR IMPROVEMENT STANDARDS DEPARTMENT OF PUBLIC WORKS, CLARK COUNTY NEVADA, LATEST EDITION, AS APPLICABLE.
  - SEE UDACS PLATE NO. 27 FOR PIPE LOCATOR RIBBON TYPICAL INSTALLATION.
  - REFER TO THE UNIFORM BUILDING DESIGN STANDARDS FOR WATER DISTRIBUTION SYSTEMS, TABLE E, "BACKFILL MATERIALS" FOR AGGREGATE TYPES AND SIZES.

**1 TYPICAL WATERLINE TRENCH DETAIL**  
 N.T.S.



**2 3'-WIDE VALLEY GUTTER DETAIL**



**A 3** N.T.S. NOTE: FOR PAVING & SUBGRADE PREPARATION DETAILS, REFER TO TYPICAL SECTIONS THIS SHEET.

**B 3** N.T.S. NOTE: FOR PAVING & SUBGRADE PREPARATION DETAILS, REFER TO TYPICAL SECTIONS THIS SHEET.

**C 3** N.T.S. NOTE: FOR PAVING & SUBGRADE PREPARATION DETAILS, REFER TO TYPICAL SECTIONS THIS SHEET.

**D 3** N.T.S. NOTE: FOR PAVING & SUBGRADE PREPARATION DETAILS, REFER TO TYPICAL SECTIONS THIS SHEET.

**E 3** N.T.S. NOTE: FOR PAVING & SUBGRADE PREPARATION DETAILS, REFER TO TYPICAL SECTIONS THIS SHEET.

**F 3** N.T.S. NOTE: FOR PAVING & SUBGRADE PREPARATION DETAILS, REFER TO TYPICAL SECTIONS THIS SHEET.

**G 3** N.T.S. NOTE: FOR PAVING & SUBGRADE PREPARATION DETAILS, REFER TO TYPICAL SECTIONS THIS SHEET.

**H 3** N.T.S. NOTE: FOR PAVING & SUBGRADE PREPARATION DETAILS, REFER TO TYPICAL SECTIONS THIS SHEET.

**I 3** N.T.S. NOTE: FOR PAVING & SUBGRADE PREPARATION DETAILS, REFER TO TYPICAL SECTIONS THIS SHEET.

**J 3** N.T.S. NOTE: FOR PAVING & SUBGRADE PREPARATION DETAILS, REFER TO TYPICAL SECTIONS THIS SHEET.

**K 3** N.T.S. NOTE: FOR PAVING & SUBGRADE PREPARATION DETAILS, REFER TO TYPICAL SECTIONS THIS SHEET.

**L 3** N.T.S. NOTE: FOR PAVING & SUBGRADE PREPARATION DETAILS, REFER TO TYPICAL SECTIONS THIS SHEET.

**M 3** N.T.S. NOTE: FOR PAVING & SUBGRADE PREPARATION DETAILS, REFER TO TYPICAL SECTIONS THIS SHEET.

**N 3** N.T.S. NOTE: FOR PAVING & SUBGRADE PREPARATION DETAILS, REFER TO TYPICAL SECTIONS THIS SHEET.

**O 3** N.T.S. NOTE: FOR PAVING & SUBGRADE PREPARATION DETAILS, REFER TO TYPICAL SECTIONS THIS SHEET.

**P 3** N.T.S. NOTE: FOR PAVING & SUBGRADE PREPARATION DETAILS, REFER TO TYPICAL SECTIONS THIS SHEET.

**Q 3** N.T.S. NOTE: FOR PAVING & SUBGRADE PREPARATION DETAILS, REFER TO TYPICAL SECTIONS THIS SHEET.

**R 3** N.T.S. NOTE: FOR PAVING & SUBGRADE PREPARATION DETAILS, REFER TO TYPICAL SECTIONS THIS SHEET.

**S 3** N.T.S. NOTE: FOR PAVING & SUBGRADE PREPARATION DETAILS, REFER TO TYPICAL SECTIONS THIS SHEET.

**T 3** N.T.S. NOTE: FOR PAVING & SUBGRADE PREPARATION DETAILS, REFER TO TYPICAL SECTIONS THIS SHEET.

**U 3** N.T.S. NOTE: FOR PAVING & SUBGRADE PREPARATION DETAILS, REFER TO TYPICAL SECTIONS THIS SHEET.

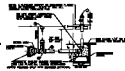
**V 3** N.T.S. NOTE: FOR PAVING & SUBGRADE PREPARATION DETAILS, REFER TO TYPICAL SECTIONS THIS SHEET.

**W 3** N.T.S. NOTE: FOR PAVING & SUBGRADE PREPARATION DETAILS, REFER TO TYPICAL SECTIONS THIS SHEET.

1300

107-V2685

**SAFETY ALERT**  
 Call Before you Dig  
 1-702-593-6111 1-800-227-2600

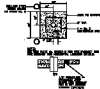


1. PARAPET WALL WITH A COPING



2. PARAPET WALL WITH A COPING  
 3. PARAPET WALL WITH A COPING  
 4. PARAPET WALL WITH A COPING

5. PARAPET WALL WITH A COPING  
 6. PARAPET WALL WITH A COPING  
 7. PARAPET WALL WITH A COPING



- 1. PARAPET WALL WITH A COPING
- 2. PARAPET WALL WITH A COPING
- 3. PARAPET WALL WITH A COPING
- 4. PARAPET WALL WITH A COPING
- 5. PARAPET WALL WITH A COPING
- 6. PARAPET WALL WITH A COPING
- 7. PARAPET WALL WITH A COPING

8. PARAPET WALL WITH A COPING



STANDARD ANCHORAGE DETAIL



9. PARAPET WALL WITH A COPING



**SAFETY ALERT**  
 Call  
 Henry The Craftsman  
 1-800-551-5511

Henry The Craftsman  
 1-800-551-5511  
 10000 W. 10th Ave. Suite 100  
 Denver, CO 80231

Henry The Craftsman

DETAILS

10000 W. 10th Ave. Suite 100  
 Denver, CO 80231  
 1-800-551-5511