

REV	DATE	DESCRIPTION
1	11/27/97	REV. STORM DRAIN & WATER
2	11/11/97	REV. STORM DRAIN
3	11/20/97	REV. STORM DRAIN

RELEASE FOR BID  
 PROJECT NO. 6354  
 DATE 11-09-97  
 P.E. NO. 111497  
 Roy D. Clark

G.C. WALLACE, INC.  
 Engineering/Architecture  
 1555 SOUTH RAINBOW BLVD./LAS VEGAS, NEVADA 89102

**CONSTRUCTION NOTES**

- CONSTRUCT 3" AC PAVING OVER 4" TYPE II AGGREGATE BASE OVER COMPACTED SUBGRADE PER DETAIL D SHEET C5.
- CONSTRUCT "L" CURB PER SUMMERLIN STANDARD DRAWING NO. S-47 REVISED 2/2/93.
- CONSTRUCT 5' WIDE CONCRETE SIDEWALK PER SUMMERLIN STANDARD DRAWING NO. S-72.
- CONSTRUCT HANDICAP RAMP PER SUMMERLIN STANDARD DRAWING NO. S-77 MODIFIED PER DETAIL "F" ON SHEET 5.
- CONSTRUCT "A" TYPE ISLAND CURB PER SUMMERLIN STANDARD DRAWING NO. S-50.
- INSTALL 10 LF 24" STORM DRAIN.
- CONNECT TO EXISTING 8" SANITARY SEWER AND CONSTRUCT 48" TYPE I MANHOLE PER SUMMERLIN STD. DWG. NO. D-2 REVISED 2/2/93.
- CONSTRUCT 8" SANITARY SEWER MEETING ASTM D-3034 SDR 35 STANDARDS.
- CONSTRUCT 48" TYPE I MANHOLE PER SUMMERLIN STANDARD DRAWING NO. D-2.
- CONSTRUCT 60" TYPE I MANHOLE PER SUMMERLIN DRAWING NO. D-2.
- CONSTRUCT 6" SANITARY SEWER LATERAL MEETING ASTM D-3034 SDR 35 STDS. SLOPE AT 2% PROVIDE 4x4 RDMV MARKER AT END OF LATERAL.
- CONSTRUCT 12" MODIFIED TYPE "C" DROP INLET PER DETAIL E5 SHEET C-5.
- CONSTRUCT 24" RCP D-1350.
- CONSTRUCT 36" RCP D-1350.
- CONSTRUCT 30" RCP D-1350 PER L.V.V.W.D. STDS.
- CONNECT TO EXIST. STORM DRAIN LATERAL.
- CONSTRUCT 6" TYPE "A" DROP INLET PER SUMMERLIN STANDARD DRAWING D-12.
- ABANDON EXISTING STORM DRAIN LATERAL IN PLACE.
- CONSTRUCT 18" RCP D-1350. **CONSTRUCT MODIFIED TYPE "B" INLET SEE SHEET SA FOR DETAIL.**

**PLAN AND PROFILE**

SCALE  
 HORIZ. 1" = 40'  
 VERT. 1" = 4'

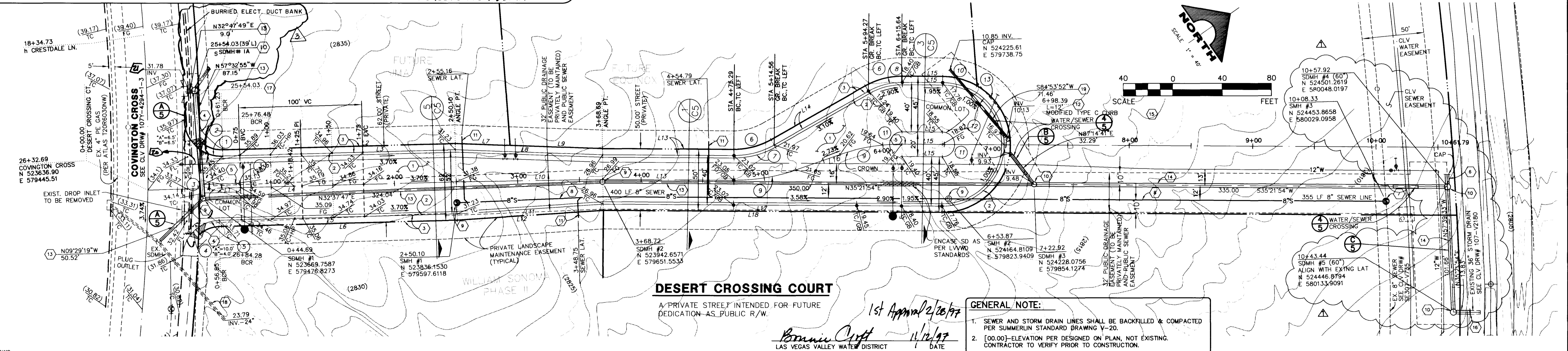
**CURVE TABLE**

CURVE	DELTA	RADIUS	LENGTH	TANGENT
1	90°10'58"	30.00'	47.22'	30.10'
2	46°33'24"	25.00'	20.31'	10.76'
3	180°00'00"	3.50'	11.00'	---
4	85°41'59"	30.00'	44.87'	27.83'
5	48°50'18"	25.00'	21.31'	11.35'
6	30°00'00"	60.00'	31.42'	16.08'
7	30°00'00"	65.00'	34.03'	17.42'
8	30°00'00"	55.00'	28.80'	14.74'
9	19°35'45"	150.00'	51.30'	25.90'
10	30°22'25"	55.00'	28.18'	14.93'
11	180°00'00"	10.00'	31.42'	---
12	180°00'00"	50.00'	157.08'	---
13	149°37'35"	55.00'	143.63'	202.62'

**LINE TABLE**

LINE	BEARING	DISTANCE
L1	N33°28'19"E	25.98'
L2	N33°28'19"E	188.87'
L3	N33°28'19"E	188.77'
L4	N33°28'19"E	290.10'
L5	N33°28'19"E	193.15'
L6	N33°28'19"E	191.32'
L7	N36°56'47"E	44.65'
L8	N36°56'50"E	119.56'
L9	N36°56'47"E	74.98'
L10	N34°04'10"E	118.59'
L11	S31°10'52"W	118.85'
L12	S31°10'52"W	118.73'
L13	S35°21'54"W	106.60'
L14	S05°21'54"W	87.85'
L15	S35°21'54"W	32.86'
L16	N15°46'09"E	37.64'
L17	S35°21'54"W	274.81'
L18	S35°21'54"W	274.66'

AVOID CUTTING UNDERGROUND UTILITY LINES. IT'S COSTLY.  
**Call before you Dig.**  
 1-800-227-2800  
 UNDERGROUND SERVICE ALERT (USA)



**DESERT CROSSING COURT**

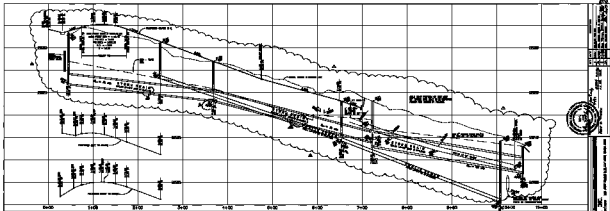
A PRIVATE STREET INTENDED FOR FUTURE DEDICATION AS PUBLIC R/W.  
 1st Approval 2/26/97  
 Brian Craft 11/24/97  
 LAS VEGAS VALLEY WATER DISTRICT

**GENERAL NOTE:**  
 1. SEWER AND STORM DRAIN LINES SHALL BE BACKFILLED & COMPACTED PER SUMMERLIN STANDARD DRAWING Y-20.  
 2. [100.00]-ELEVATION PER DESIGNED ON PLAN. NOT EXISTING. CONTRACTOR TO VERIFY PRIOR TO CONSTRUCTION.

620.488D

THE CROSSING BUSINESS CENTER  
 DESERT CROSSING COURT  
 ROAD, STORM DRAIN, & SEWER  
 SHEET C4  
 OF 5 SHEETS  
 04-30-97

Revised 107-V2732



- CONSTRUCTION NOTES**
- 1. SEE GENERAL NOTES
  - 2. SEE SPECIFICATIONS
  - 3. SEE PLANS
  - 4. SEE ELEVATIONS
  - 5. SEE MATERIALS
  - 6. SEE FINISHES
  - 7. SEE SCHEDULE
  - 8. SEE DETAILS
  - 9. SEE NOTES
  - 10. SEE SPECIFICATIONS
  - 11. SEE PLANS
  - 12. SEE ELEVATIONS
  - 13. SEE MATERIALS
  - 14. SEE FINISHES
  - 15. SEE SCHEDULE
  - 16. SEE DETAILS
  - 17. SEE NOTES
  - 18. SEE SPECIFICATIONS
  - 19. SEE PLANS
  - 20. SEE ELEVATIONS
  - 21. SEE MATERIALS
  - 22. SEE FINISHES
  - 23. SEE SCHEDULE
  - 24. SEE DETAILS
  - 25. SEE NOTES

DATE: 10/1/77  
 DRAWN BY: J.C.F.

**MANHOLE SCHEDULE**

NO.	TYPE	DIAMETER	DEPTH	LOCATION	REMARKS
1	18"	18"	4'	Station 1+00	
2	18"	18"	4'	Station 2+00	
3	18"	18"	4'	Station 3+00	
4	18"	18"	4'	Station 4+00	
5	18"	18"	4'	Station 5+00	
6	18"	18"	4'	Station 6+00	
7	18"	18"	4'	Station 7+00	
8	18"	18"	4'	Station 8+00	
9	18"	18"	4'	Station 9+00	
10	18"	18"	4'	Station 10+00	
11	18"	18"	4'	Station 11+00	
12	18"	18"	4'	Station 12+00	
13	18"	18"	4'	Station 13+00	
14	18"	18"	4'	Station 14+00	
15	18"	18"	4'	Station 15+00	
16	18"	18"	4'	Station 16+00	
17	18"	18"	4'	Station 17+00	
18	18"	18"	4'	Station 18+00	
19	18"	18"	4'	Station 19+00	
20	18"	18"	4'	Station 20+00	

Call before you Dig.  
 1-800-368-5878

