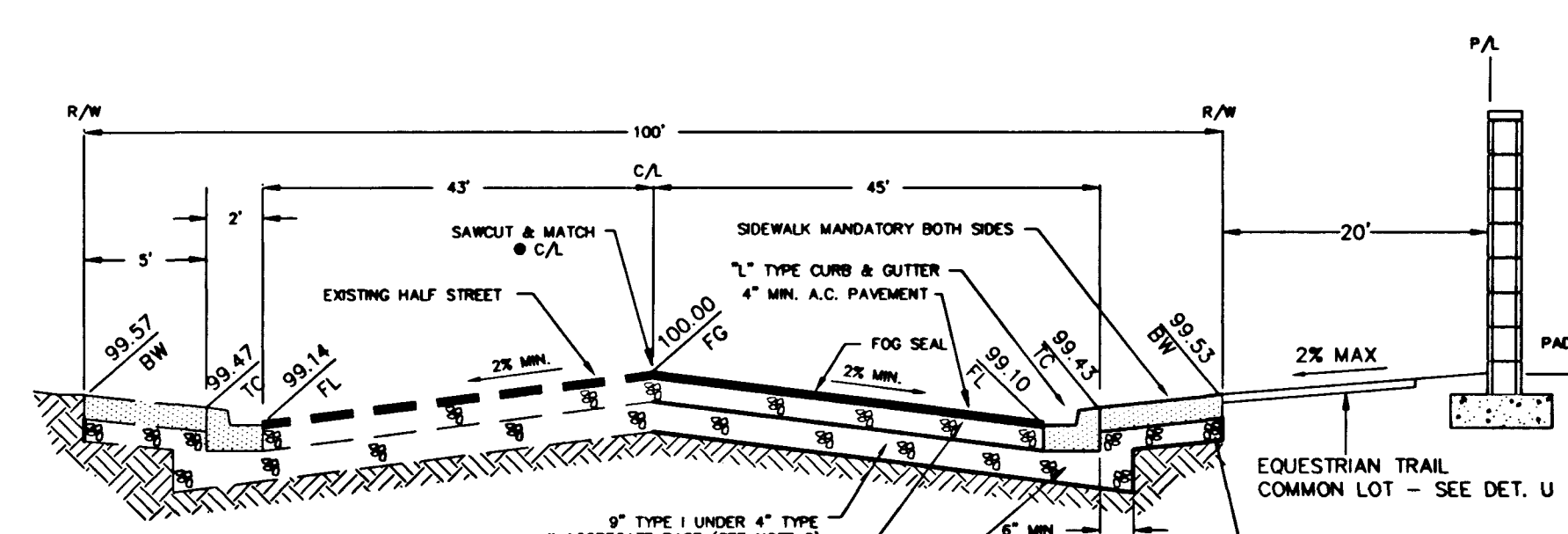


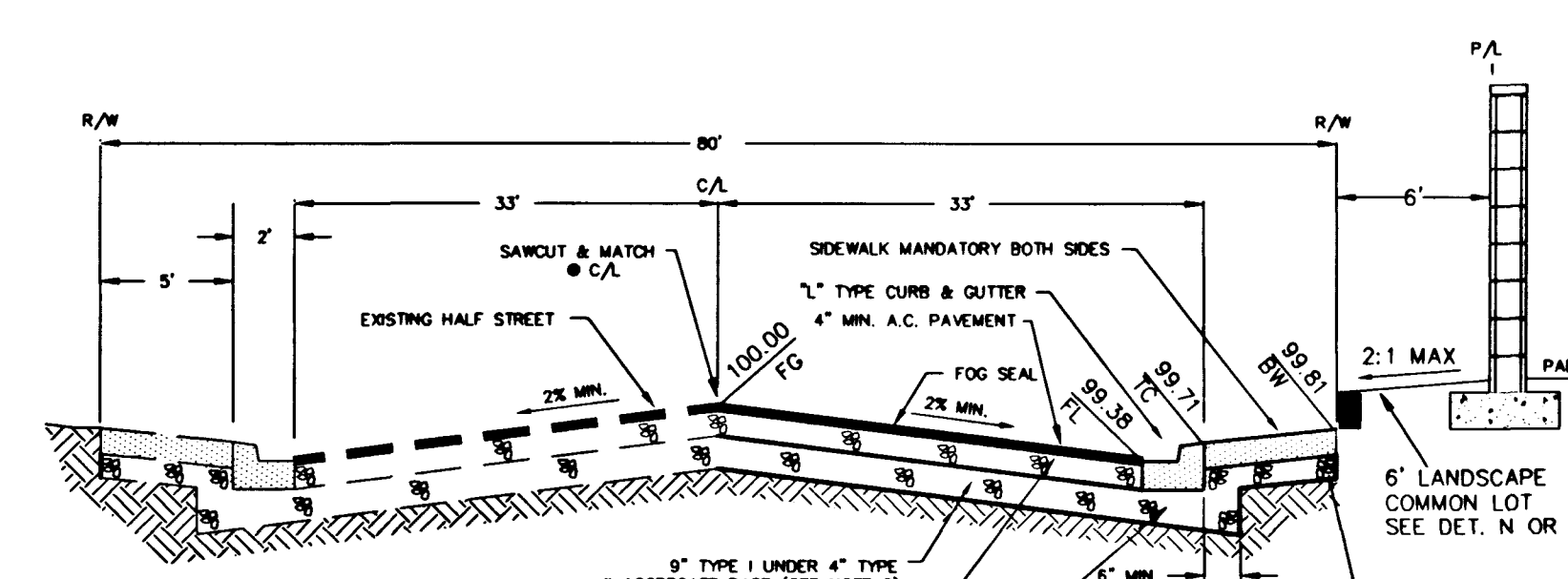
60' ROW SECTION DETAIL
WHISPERING SANDS DRIVE

SECTION A - WHISPERING SANDS



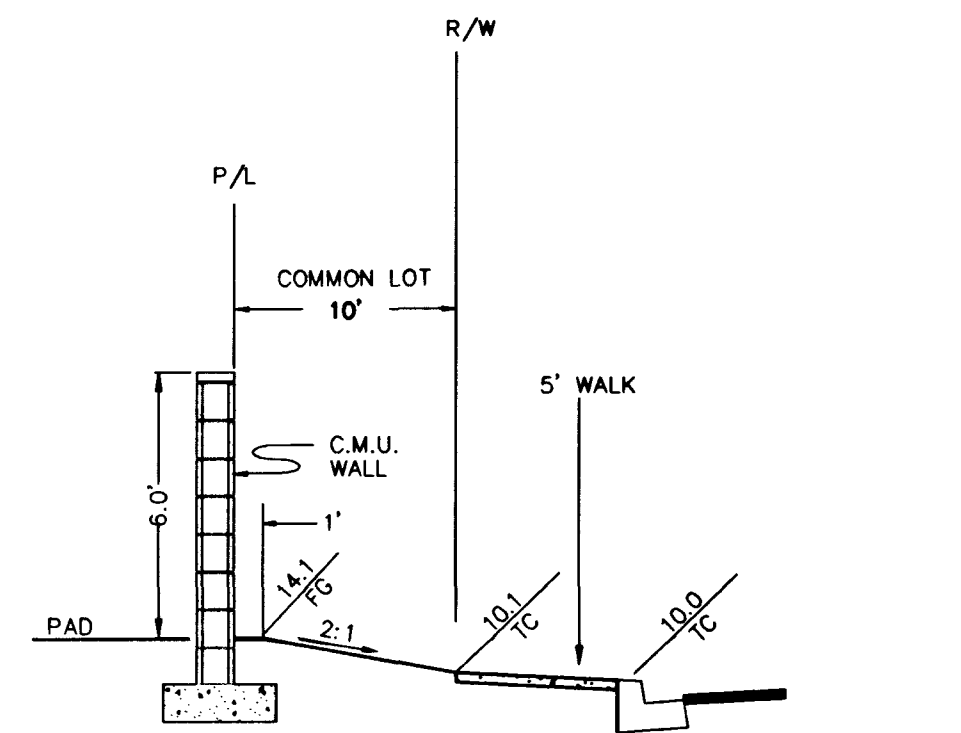
100' ROW SECTION DETAIL
BUFFALO DRIVE

SECTION B - BUFFALO DRIVE

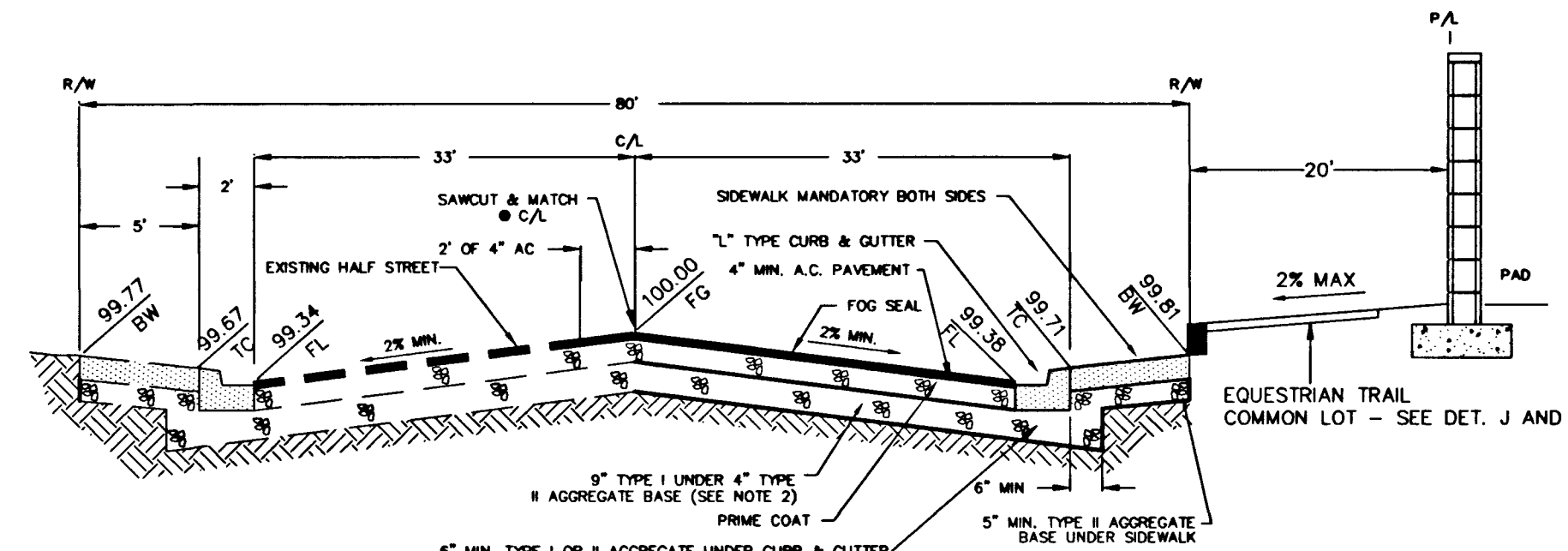


80' ROW SECTION DETAIL
FARM ROAD

SECTION C - FARM ROAD

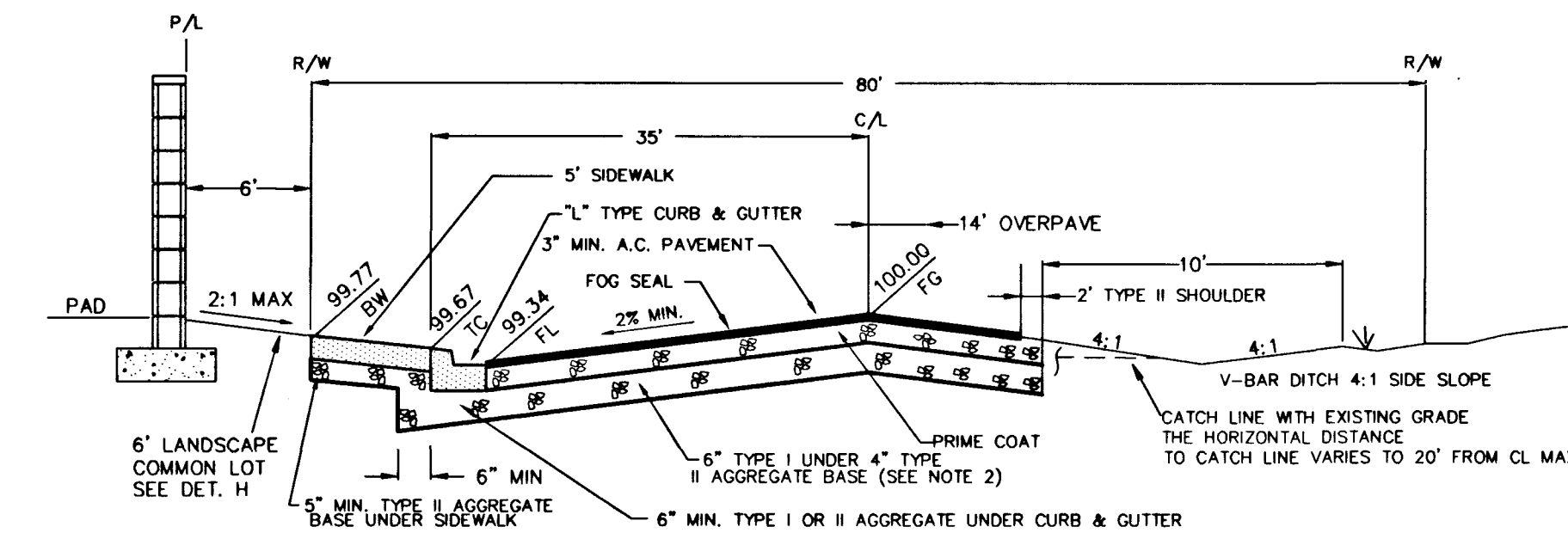


SECTION V - LANDSCAPE STRIP



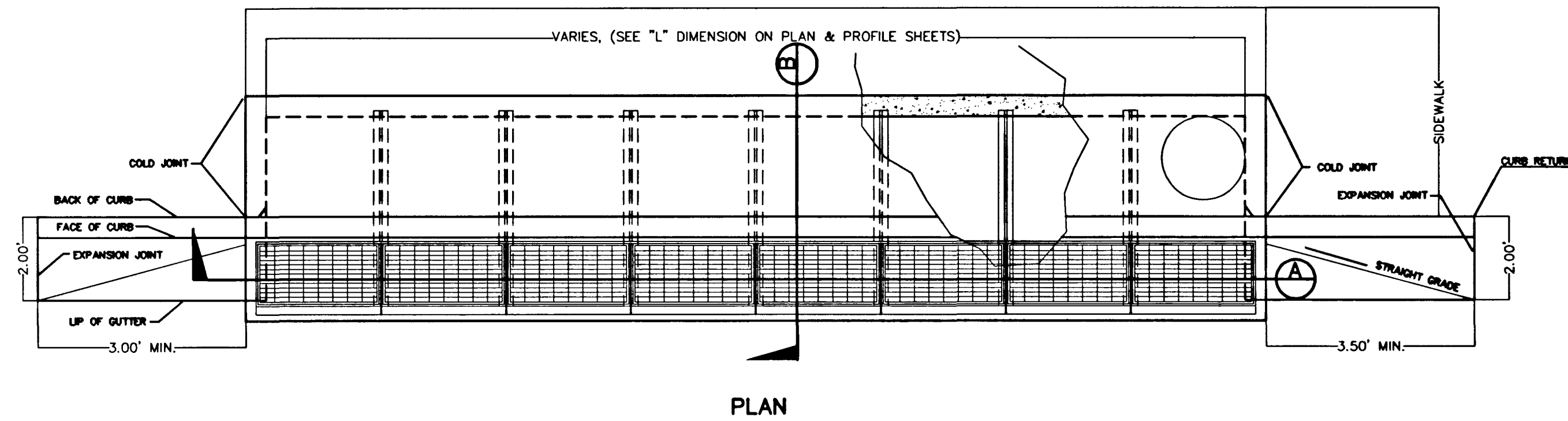
80' ROW SECTION DETAIL
FARM ROAD

SECTION D - FARM ROAD

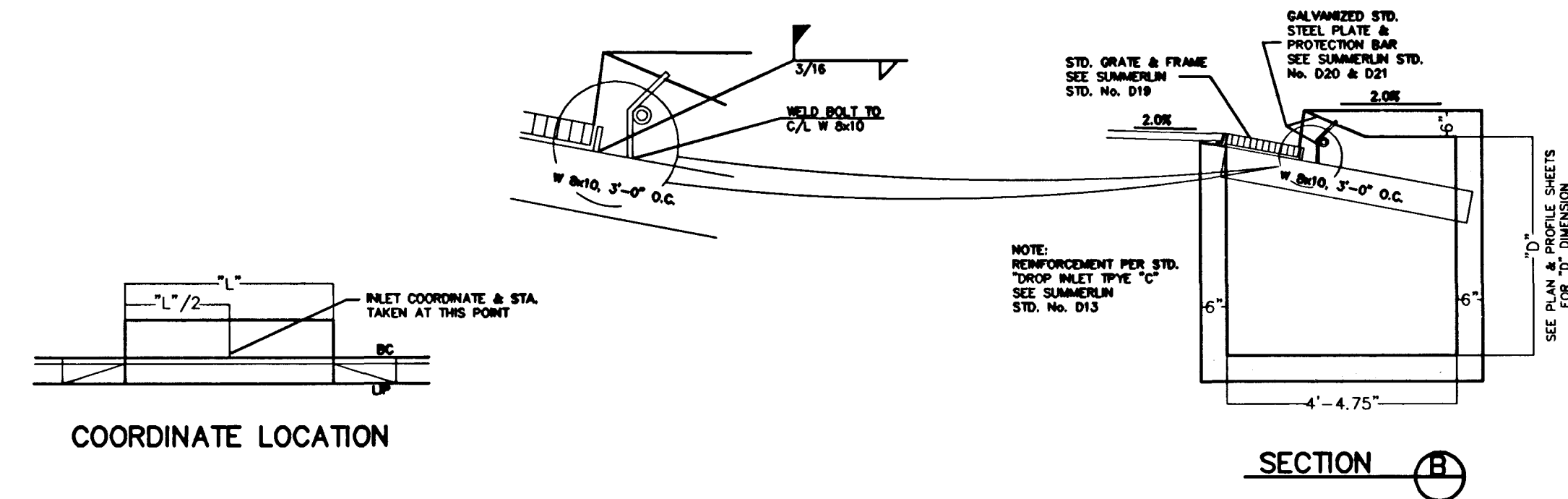


80' ROW SECTION DETAIL
TENAYA DRIVE

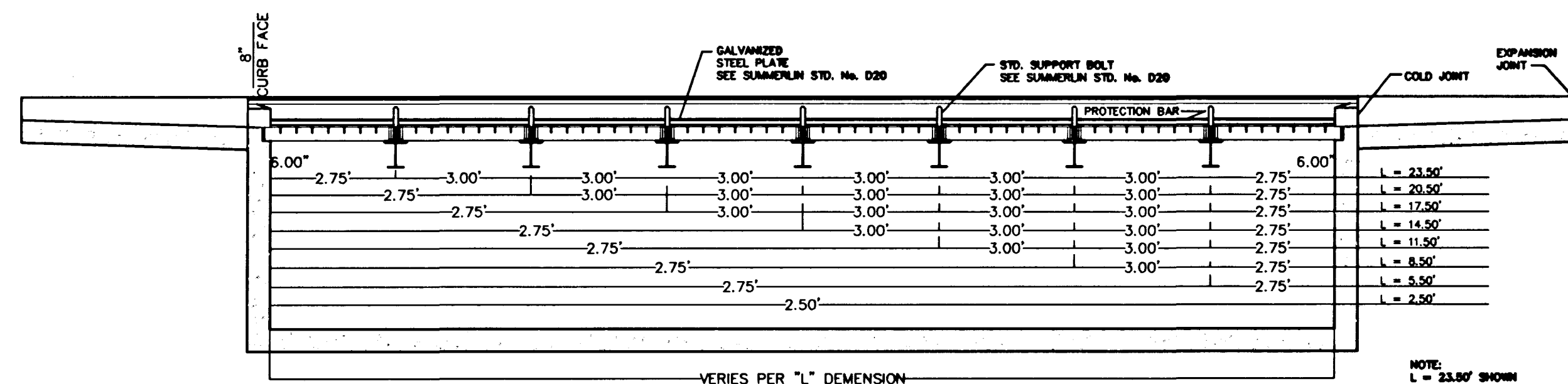
SECTION E - TENAYA ROAD



PLAN



COORDINATE LOCATION



SECTION A

MODIFIED TYPE "C" DROP INLET
DETAIL F - MODIFIED TYPE C DROP INLET

REV	DATE	BY	REVISION

SPECTRUM DEVELOPMENT CO.
185 E. RENO #6
LAS VEGAS, NEVADA, 89119
(702) 734-2400

ENGINEERING COMPANY
50 So. Jones #202, Las Vegas, NV, 89107
Telephone: (702) 877-1300

ALPHA &

GRADING DETAILS

TENAYA FARMS UNIT 1

DRAWN BY:	7.16.99
DESIGNED BY:	7.16.99
CHECKED BY:	
PROJECT NO:	817701
SCALE:	NONE

PROFESSIONAL ENGINEER
EDWARD F. TANEY
CIVIL
No. 9903

7:30 PM

SHEET
GP2
9 OF 35 SHEETS

DRAWING NO.
107Y-4618-1

NOTICE!

EXISTING UTILITIES ARE SHOWN ON PLANS FOR THE CONVENIENCE OF THE CONTRACTOR ONLY. THE CONTRACTOR IS RESPONSIBLE FOR THE PROTECTION OF ALL UTILITIES. THE ENGINEER BEARS NO RESPONSIBILITY FOR UTILITIES NOT SHOWN OR SHOWN INCORRECTLY.

Call BEFORE YOU Dig

1-800-227-2600
UNDERGROUND SERVICE (USA)

AVOID CUTTING UNDERGROUND UTILITIES. IT'S COSTLY.

VIEW NAME: (SHT NAME)
FILE NAME: DETAILS.DWG
17484



AT THE INTERSECTION
 OF THE DRAINAGE CANALS

SECTION A - WHISPERING SANDS



AT THE INTERSECTION
 OF THE DRAINAGE CANALS

SECTION B - BUFFALO DRIVE



AT THE INTERSECTION
 OF THE DRAINAGE CANALS

SECTION C - FARM ROAD



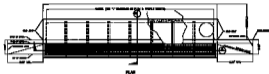
SECTION V - LANDSCAPE STRIP



SECTION D - FARM ROAD



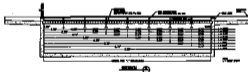
SECTION E - TENAYA ROAD



PLAN



CROSS SECTION



PLAN

DETAIL F - MODIFIED TYPE C DROP INLET

SPECTRUM DEVELOPMENT CO.
 1000 W. 10th St., Suite 100
 Berkeley, CA 94710
 (415) 841-1111
 ALPHA OX

TENAYA FARM
 TOWN OF TENAYA

DATE: 10/1/88
 DRAWN BY: J. H. HARRIS
 CHECKED BY: J. H. HARRIS
 PROJECT NO.: 88-010
 SHEET NO.: 10

