

931215

01220

TIE MAP OF SUNSET HILLS PHASE 1

A 33 LOT RESIDENTIAL SUBDIVISION
A PORTION OF THE SW 1/4 OF SECTION 25, T. 19 S., R. 60 E., M.D.M.
LAS VEGAS, CLARK COUNTY, NEVADA

NOTE: DIRECT VEHICULAR ACCESS TO ANN ROAD AND
BRADLEY ROAD FROM ADJUTING LOTS IS PROHIBITED.

CURVE DATA TABLE

No.	RADIUS	DELTA	LENGTH	TANGENT
C1	25.00'	90°00'00"	39.27'	25.00'
C2	45.50'	50°14'59"	46.24'	25.34'
C3	45.50'	50°14'58"	40.19'	25.31'
C4	45.50'	50°15'00"	42.86'	23.11'
C5	45.50'	50°15'00"	42.13'	22.71'
C6	45.50'	27°25'11"	219.14'	---
C7	45.50'	60°20'58"	54.47'	30.39'
C8	45.50'	80°00'00"	46.06'	29.25'
C9	251.00'	0°33'30"	33.19'	16.61'
C10	251.00'	1°02'00"	57.10'	26.67'
C11	251.00'	2°03'44"	90.29'	45.64'
C12	25.00'	89°45'19"	39.16'	24.89'
C13	25.00'	90°14'41"	39.38'	25.11'
C14	45.50'	60°05'35"	47.72'	26.35'
C15	15.00'	47°50'39"	17.56'	8.61'
C16	15.00'	80°00'00"	23.56'	15.00'
C17	15.00'	89°45'19"	84.59'	53.77'
C18	45.50'	75°48'14"	60.17'	35.40'
C19	45.50'	73°18'58"	58.50'	34.08'
C20	200.00'	21°00'57"	73.36'	37.10'
C21	200.00'	06°12'45"	22.85'	11.44'
C22	200.00'	14°28'12"	50.51'	25.38'
C23	200.00'	20°28'39"	71.36'	36.07'
C24	251.00'	04°43'48"	20.72'	10.37'
C25	15.00'	90°15'06"	23.63'	15.00'
C26	15.00'	73°27'45"	19.23'	11.59'
C27	224.50'	08°21'59"	34.33'	17.22'
C28	225.50'	12°17'00"	48.34'	24.26'
C29	225.50'	21°00'57"	82.71'	41.83'
C30	225.50'	20°32'14"	80.83'	40.85'

LINE DATA TABLE

No.	BEARING	DISTANCE
L1	S89°26'45"W	18.88'
L2	N89°46'18"E	5.51'
L3	S89°46'18"W	5.51'
L4	S89°46'18"W	15.28'
L5	N29°27'37"E	15.00'
L6	S89°46'18"W	15.00'

I, Boyd R. Urie, a Registered Professional Land Surveyor in the State of Nevada, do hereby certify that the monuments have been set and the tie distances established as shown hereon. This survey was completed on November 18, 1994.

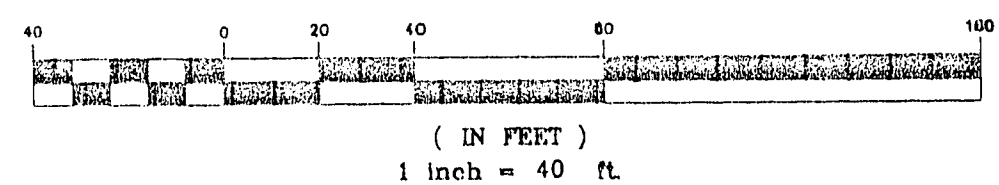
LEGEND

- ⊙ DENOTES MONUMENT FOUND AS INDICATED
- DENOTES TYPE III MONUMENT SET PLS 8614 UNLESS OTHERWISE INDICATED
- B.S.L. BUILDING SETBACK LINE
- ③ BLOCK NUMBER

COUNTY RECORDERS NOTE

ANY SUBSEQUENT CHANGES TO THIS MAP SHOULD BE EXAMINED AND MAY BE DETERMINED BY REFERENCE TO THE COUNTY RECORDERS CUMULATIVE MAP INDEX (NRS 2778.5695)

GRAPHIC SCALE

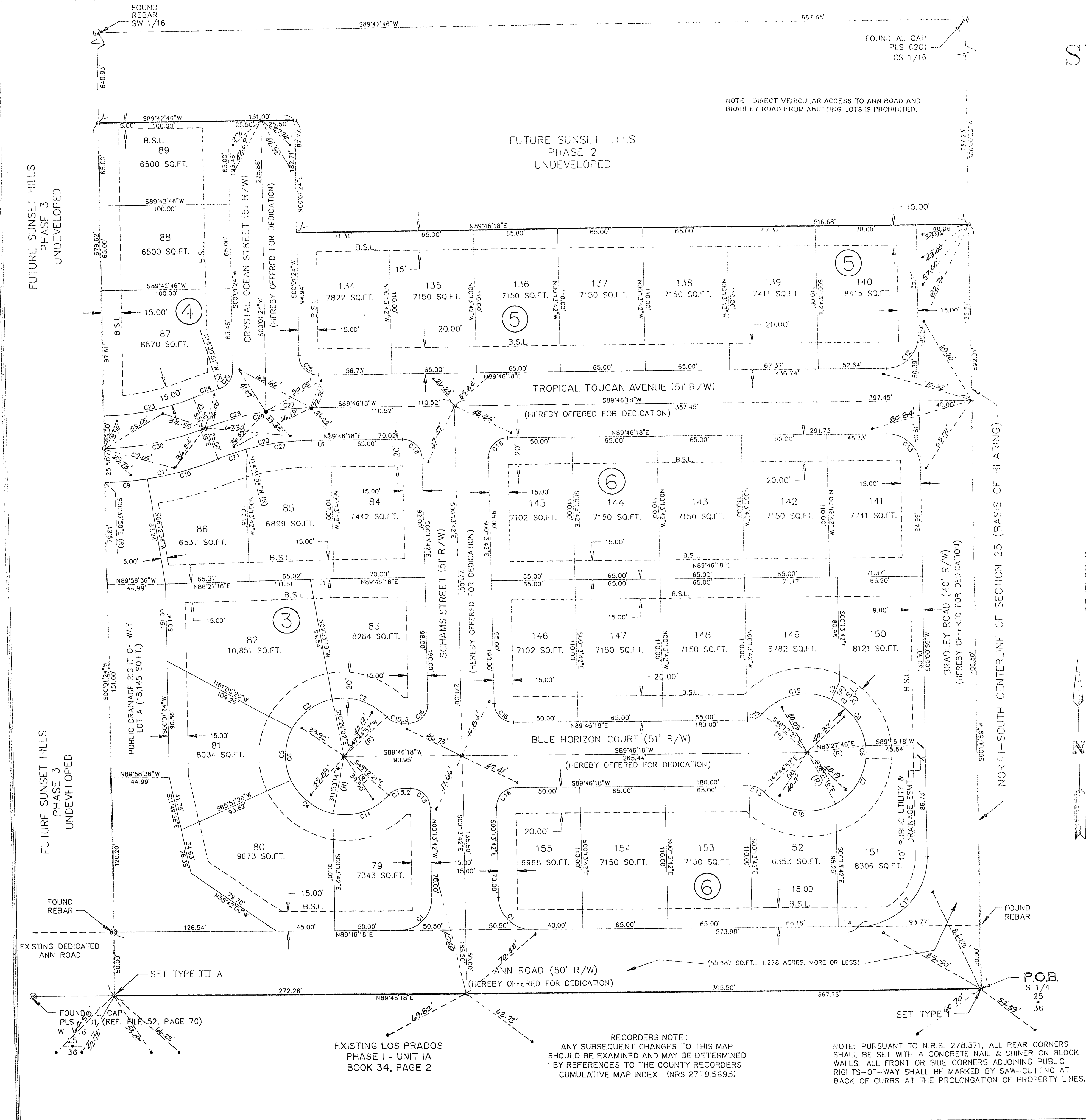


TIE MAP OF SUNSET HILLS PHASE 1 A 33 LOT RESIDENTIAL SUBDIVISION

LOCATED IN A PORTION OF THE SW 1/4 OF SECTION 25, T. 19 S., R. 60 E., M.D.B. & M. LAS VEGAS, CLARK COUNTY, NEVADA

SUMMIT ENGINEERING CORPORATION
CONSULTING ENGINEERS AND SURVEYORS
368 30. HIGHLAND LAS VEGAS, NV 89103
(702) 252-3246 FAX: 252-3247

SHEET 2
OF 2



EXISTING LOS PRADOS PHASE I - UNIT IA BOOK 34, PAGE 2

RECORDERS NOTE: ANY SUBSEQUENT CHANGES TO THIS MAP SHOULD BE EXAMINED AND MAY BE DETERMINED BY REFERENCES TO THE COUNTY RECORDERS CUMULATIVE MAP INDEX (NRS 2778.5695)

NOTE: PURSUANT TO N.R.S. 278.371, ALL REAR CORNERS SHALL BE SET WITH A CONCRETE NAIL & SHINER ON BLOCK WALLS; ALL FRONT OR SIDE CORNERS ADJOINING PUBLIC RIGHTS-OF-WAY SHALL BE MARKED BY SAW-CUTTING AT BACK OF CURBS AT THE PROLONGATION OF PROPERTY LINES.

11-6-43 BOOK 59 PAGE 54 058-4290-1