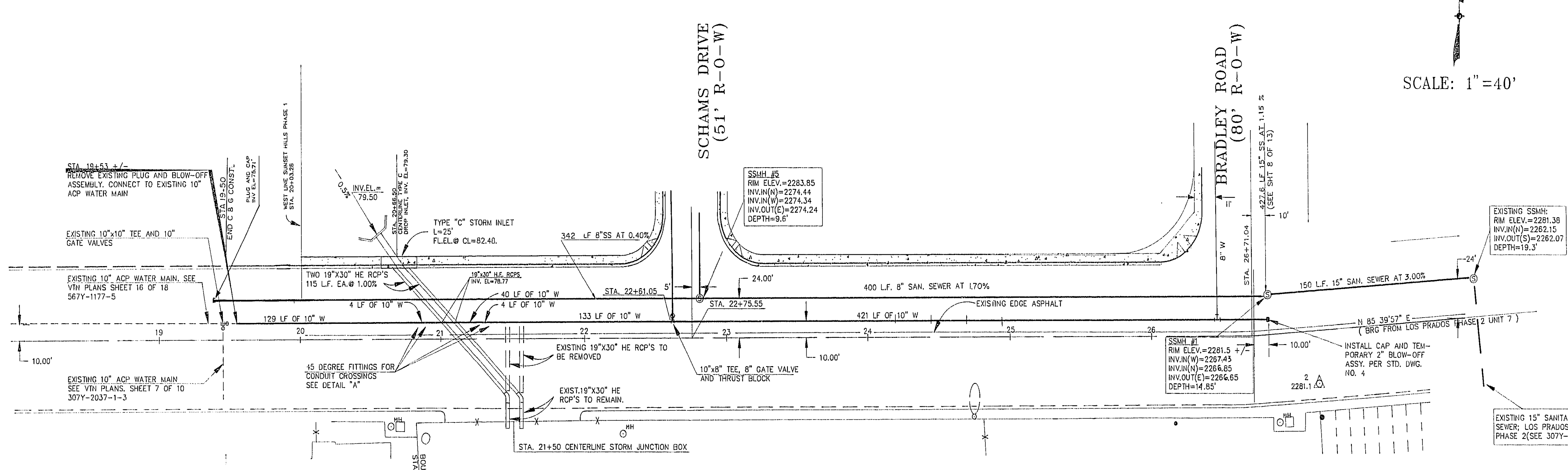


SUNSET HILLS-PHASE 1



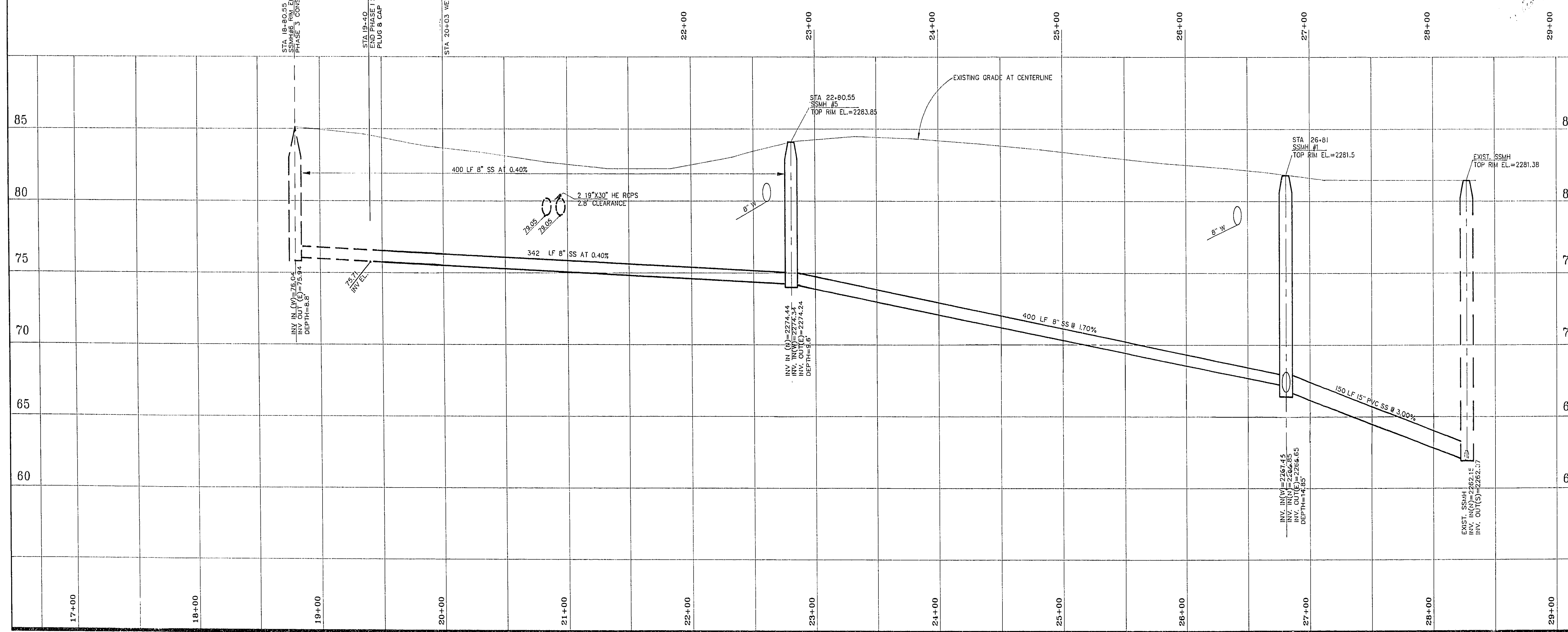
SCALE: 1" = 40'

ANN ROAD (100' R-O-W)

NOTE:
BRW APPROVED PLANS FOR A 15" SANITARY SEWER MAIN IN BRADLEY ROAD (3077-698) HAVE BEEN REVISED BY B & E ENGINEERING (438-0313) BECAUSE OF A CONFLICT WITH THE EXISTING KERN RIVER GAS MAIN AT CONTINENTAL PARKWAY. THE DEPTH OF THE PROPOSED SEWER MANHOLE AT BRADLEY ROAD AND EL CAMPO GRANDE IS IN ACCORDANCE WITH B & E ENGINEERING PRELIMINARY RE-DESIGN.

PROJECT BENCHMARK
City of Las Vegas Benchmark No. LV90 36NNW;
a rivet & plate in South top of curb at Ann Road and Coverts Street.
ELEVATION=2289.949

BASIS OF BEARINGS
North 89°48'18" East, being the South line of the S1/4 of Section 25, Township 19 South, Range 60 East, M.D.M., as shown in File 52 of Surveys, Page 70, Clark County, Nevada Recorder's Cumulative Map Index.



ANN-WISW.dwg
SUMMIT™ ENGINEERING CORPORATION
CONSULTING ENGINEERS AND SURVEYORS
1015 E. RENO AVE., LAS VEGAS, NEVADA 89118
(702) 736-1801

DESIGNED BY: J.A.E.
DRAWN BY: B.R.U.
CHECKED BY: B.H.W.
DATE: JULY 1993

SUNSET HILLS PHASE 1
SEWER PLAN
ANN ROAD

REV.	DATE	DESCRIPTION	BY	APP'D
1	10/1/93	REUSE S&W SEWER	B.H.	J.A.E.

SHEET 9 OF 13
SCALE: HORIZ. 1" = 40', VERT. 1" = 5'
JOB NO. 706516

11-6-154 3077-4290-1

24 20