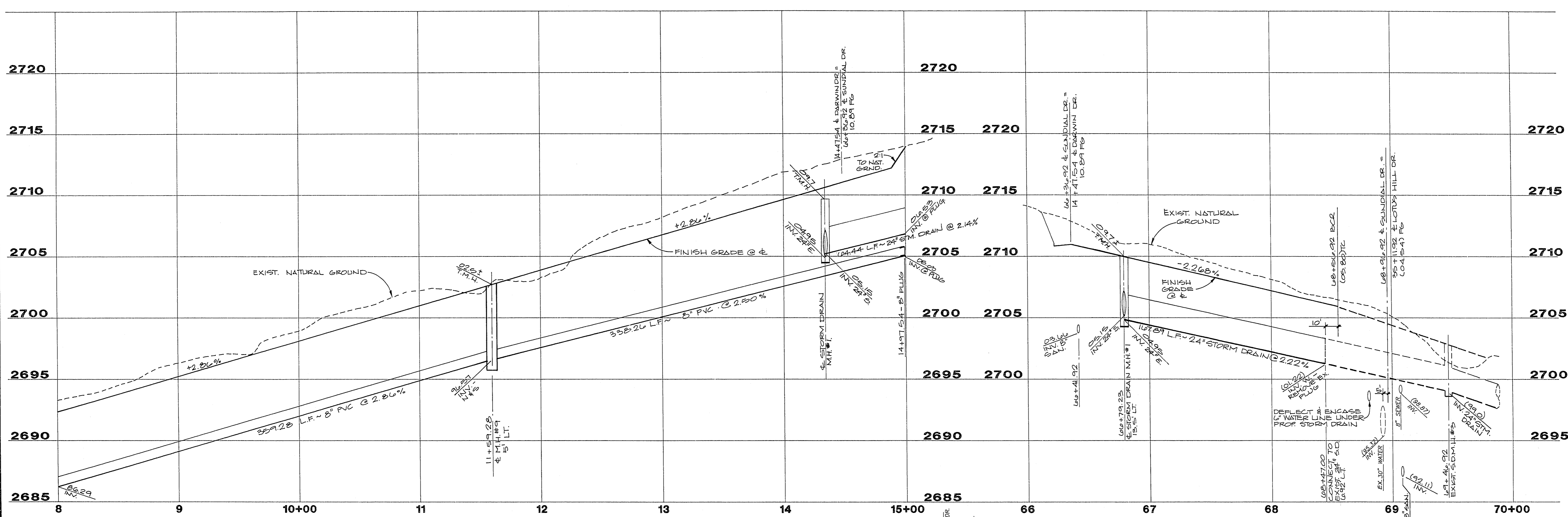


JOB NO. 701.144



**CURVE DATA**

CURVE	DELTA	RADIUS	LENGTH	TANGENT
1	90°00'00"	20.00'	31.42'	20.00'

**MH COORD. STORM**

MH#	NORTH	EAST
1	531,818.260	580,968.680

**MH COORDINATES**

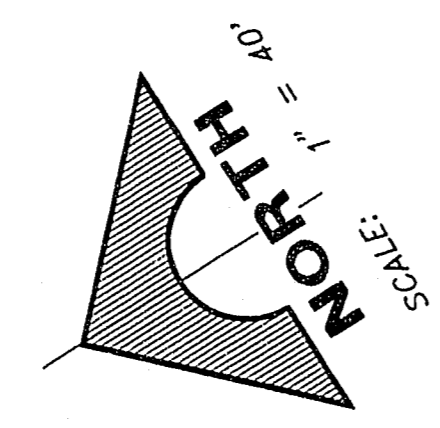
MH#	NORTH	EAST
9	531,818.260	581,082.641

**STORM LINE TABLE**

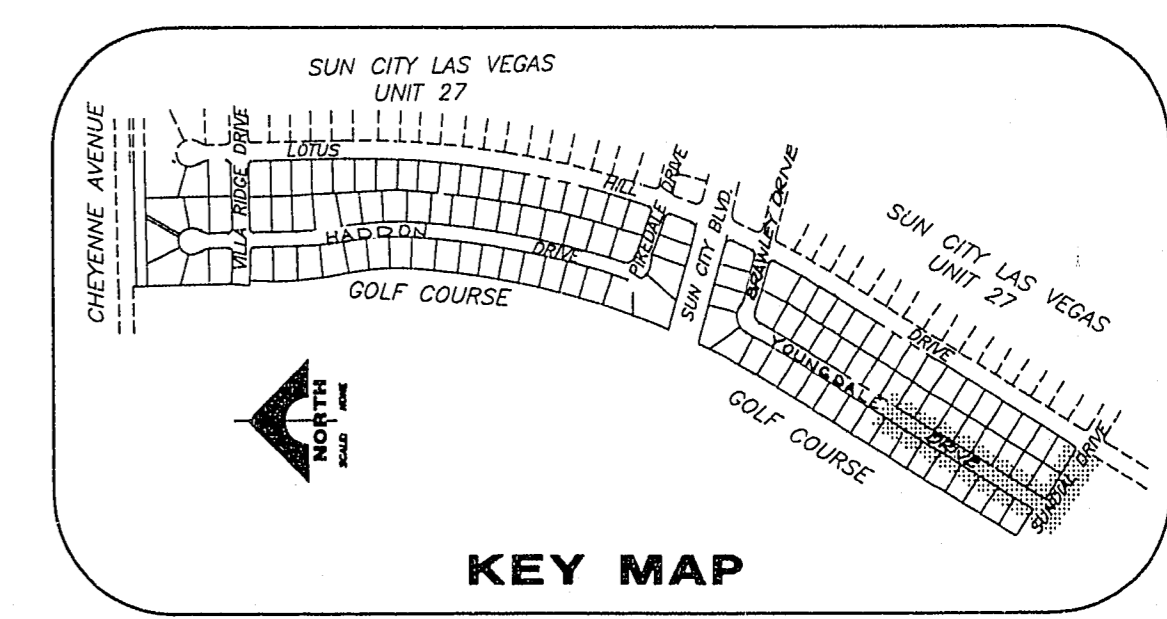
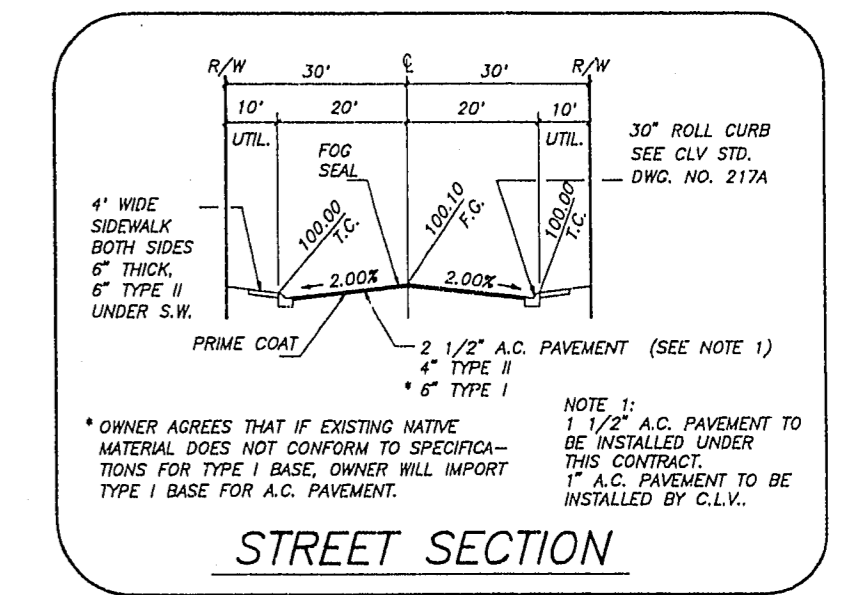
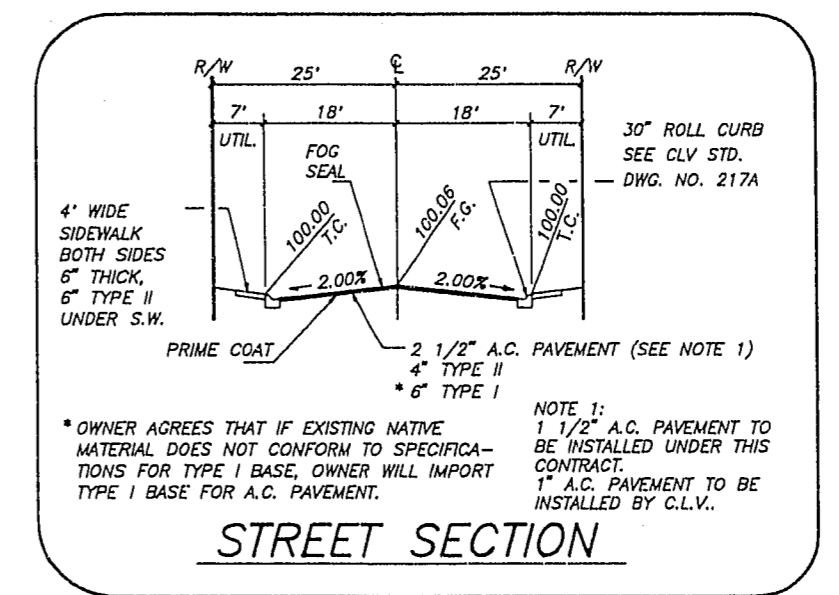
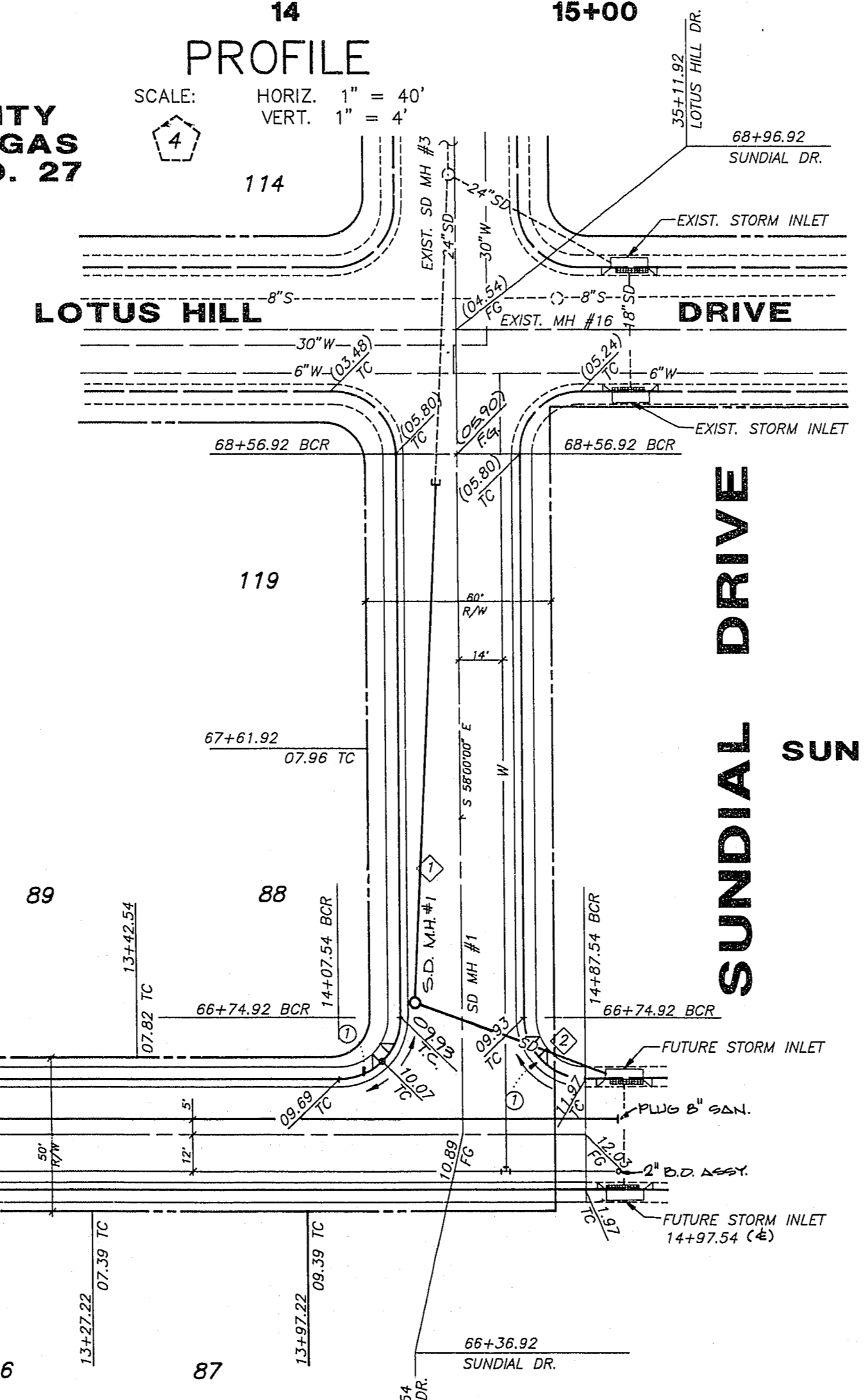
LINE	BEARING	DISTANCE
1	N 55°45'4" W	167.89'
2	N 52°33'06" E	64.44'

**SEWER LINE TABLE**

LINE	BEARING	DISTANCE
10	S 32°00'00" W	450.00'
11	S 32°00'00" W	338.28'



**PROFILE**  
SCALE: HORIZ. 1" = 40'  
VERT. 1" = 4'



MATCH LINE - STA. 8+00  
(SEE SHEET 11)

**YOUNGDALE DRIVE**

**SUNDIAL DRIVE**

**FUTURE SUN CITY LAS VEGAS UNIT NO. 30**

APPROVED FOR CONSTRUCTION  
DEL WEBB COMMUNITIES, INC. DATE: \_\_\_\_\_

APPROVED FOR CONSTRUCTION

RECOMMENDED BY: MICHAEL D. ROSS, CIVIL ENGINEER, LICENSE NO. 6218

G. C. WALLACE, INC. Engineering/Architecture  
1555 SOUTH RAINBOW BLVD./LAS VEGAS, NEVADA 89102

DEL WEBB COMMUNITIES, INC.  
SUN CITY LAS VEGAS UNIT NO. 29  
YOUNGDALE DRIVE & SUNDIAL DRIVE

SHEET 12 OF 18 SHEETS

10-7-13 1044-4141-29