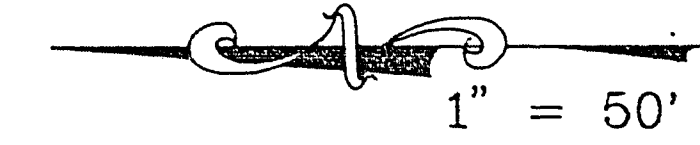


930826

01282 1517-25

SUMMERSPRINGS - UNIT 1

A PORTION OF THE W1/2 OF THE NW1/4 OF THE SW1/4
OF SECTION 8, T. 20 S., R. 60 E., M.D.M., CLARK COUNTY, NEVADA.



CURVE TABLE

CURVE	RADIUS	LENGTH	TANGENT	DELTA
C1	300.00'	84.25'	42.40'	16°05'25"
C2	300.00'	91.27'	45.99'	17°25'52"
C3	300.00'	49.74'	24.93'	09°30'02"
C4	300.00'	41.52'	20.80'	07°55'50"
C5	25.00'	42.42'	28.37'	97°13'17"
C6	274.50'	42.49'	21.29'	08°52'08"
C7	325.50'	99.03'	49.90'	17°25'52"
C8	274.50'	7.49'	3.75'	01°33'48"
C9	274.50'	35.00'	17.52'	07°18'20"
C10	325.50'	33.62'	16.83'	05°55'05"
C11	325.50'	38.91'	19.48'	06°50'56"
C12	325.50'	26.50'	13.26'	04°39'50"
C13	15.00'	23.90'	15.34'	91°17'18"
C14	15.00'	23.24'	14.68'	88°46'52"
C15	15.00'	23.88'	15.32'	91°13'08"
C16	25.00'	11.61'	5.91'	26°36'17"
C17	25.00'	3.58'	1.79'	08°12'01"
C18	25.00'	8.03'	4.05'	18°24'16"
C19	60.00'	31.36'	16.05'	29°56'56"
C20	60.00'	30.00'	15.32'	28°38'52"
C21	60.00'	30.00'	15.32'	28°38'52"
C22	60.00'	30.00'	15.32'	28°38'52"
C23	60.00'	29.96'	15.30'	28°36'19"
C24	25.00'	11.61'	5.91'	26°36'17"
C25	25.00'	11.61'	5.91'	26°36'17"
C26	60.00'	148.56'	173.61'	141°52'07"
C27	60.00'	3.54'	1.77'	03°23'04"
C28	60.00'	34.96'	17.99'	33°23'07"
C29	60.00'	32.28'	16.54'	30°49'17"
C30	60.00'	32.28'	16.54'	30°49'17"
C31	60.00'	30.00'	15.32'	28°38'52"
C32	60.00'	15.51'	7.80'	14°48'29"
C33	25.00'	11.61'	5.91'	26°36'17"
C34	15.00'	27.64'	19.75'	105°33'52"
C35	325.50'	59.26'	29.71'	10°25'50"
C36	25.00'	37.03'	22.85'	84°51'59"
C37	25.00'	38.68'	24.42'	88°39'34"
C38	25.00'	27.80'	15.33'	63°42'15"
C39	25.00'	10.89'	5.53'	24°57'18"
C40	25.00'	38.68'	24.42'	88°39'34"
C41	15.00'	23.91'	15.36'	91°20'26"
C42	15.00'	23.22'	14.67'	88°42'42"
C43	25.00'	39.83'	25.57'	91°17'18"
C44	300.00'	6.36'	3.18'	01°12'55"
C45	300.00'	77.67'	39.16'	14°52'30"

COURSE TABLE

LINE	DIRECTION	DISTANCE
L1	S 89°27'35" W	43.54'
L2	S 89°48'02" W	13.24'
L3	N 01°32'25" W	12.20'
L4	N 89°43'51" E	15.23'
L5	S 89°43'51" W	2.92'
L6	S 01°29'17" E	11.52'

RADIAL LINE TABLE

R1	N 08°07'48" W
R2	S 17°37'50" E PRC
R3	S 17°06'16" E PRC
R4	S 08°45'42" E PCC
R5	S 08°40'28" E PRC
R6	S 84°56'08" E PRC
R7	N 78°44'37" W
R8	S 23°25'11" E
R9	N 26°48'15" W PRC
R10	S 26°24'19" W PRC
R11	S 02°12'00" E
R12	S 88°08'37" E
R13	S 61°54'27" W PRC
R14	S 80°18'43" W
R15	S 16°04'01" E
R16	S 24°45'20" W
R17	S 02°45'20" E

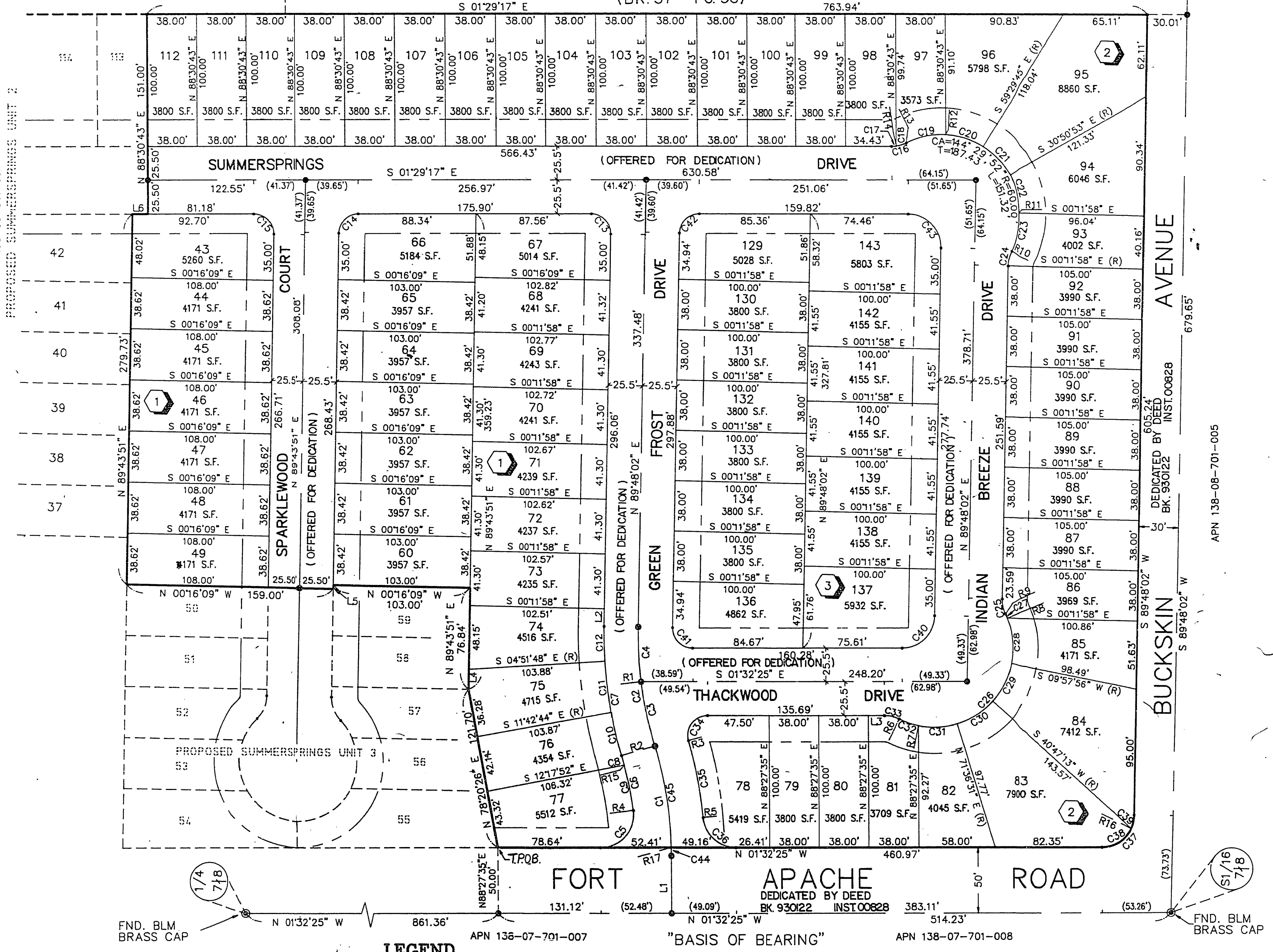
NOTES:

1) PURSUANT TO NRS 278.371 ALL REAR LOT CORNERS SHALL BE SET WITH A NAIL AND TAG "PLS 9105" ON BLOCK WALLS AND ALL FRONT OR SIDE LOT CORNERS ADJOINING RIGHT-OF-WAY SHALL BE MARKED BY THE SAWCUTTING OF THE BACK OF CURBS ON THE PROLONGATION OF THE PROPERTY LINES.

ACT	DATE	BY	REVISION

EXISTING
GOWAN / FORT APACHE
PHASE 3 - UNIT B (BK.57, PG.22)

EXISTING
GOWAN / FORT APACHE
PHASE 3 - P.U.D.
(BK. 57 PG. 38)



LEGEND

- T.P.O.B. TRUE POINT OF BEGINNING.
- 2 LOT NUMBER / TOTAL LOTS = 75
- 3 BLOCK NUMBER
- L4 COURSE NUMBER
- C5 CURVE NUMBER
- R1 RADIAL LINE NUMBER
- FND. POINT AS INDICATED
- SET TYPE III - MON., PLS 9105
- FINAL MAP BOUNDARY
- - - MINIMUM BUILDING SETBACK LINE: FRONT = 20' / REAR = 20' / SIDE = 5' / CORNER = 15'
- (R) RADIAL LINE

W.O. 4428-1
SHEET 2 OF 2

BOOK 58 PAGE 4
4262-1