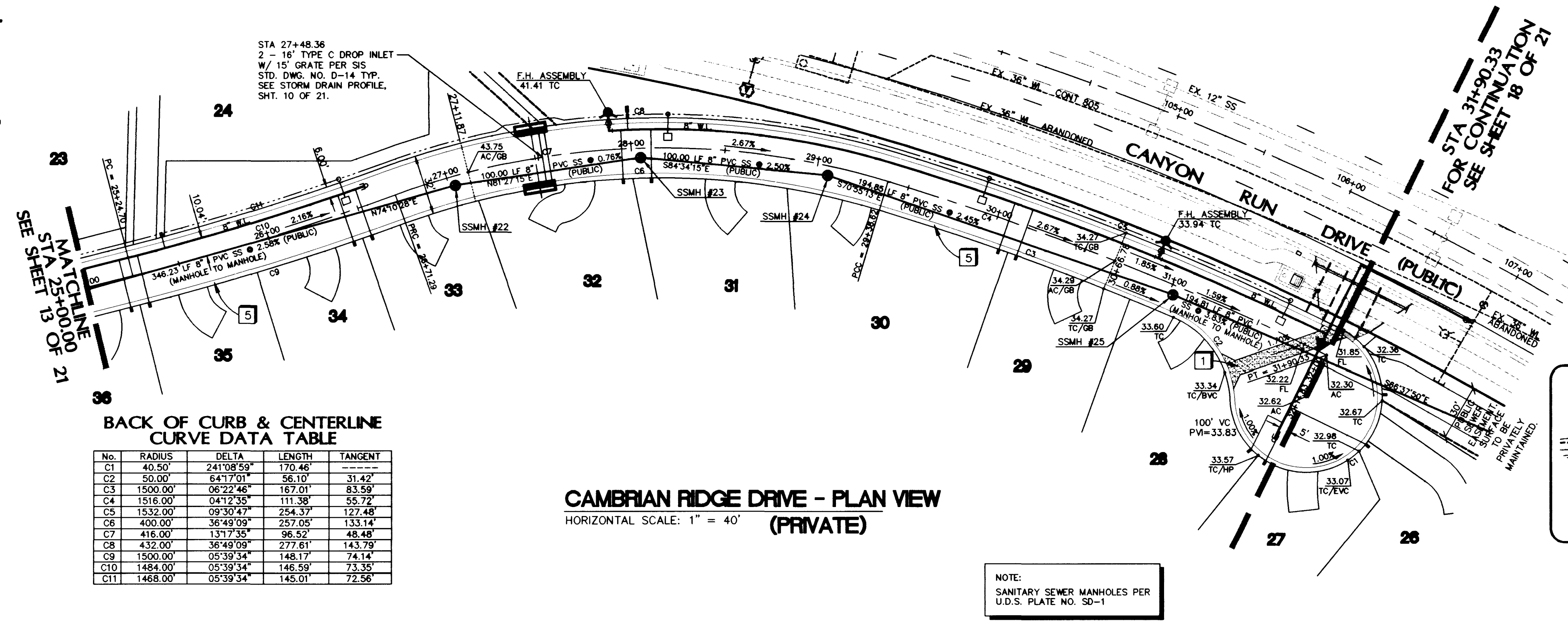


Call before you Dig
1-800-227-2600

Call before you Overhead
1-702-593-6111
NEVADA POWER ENVIRONMENT & SAFETY SERVICES DEPARTMENT

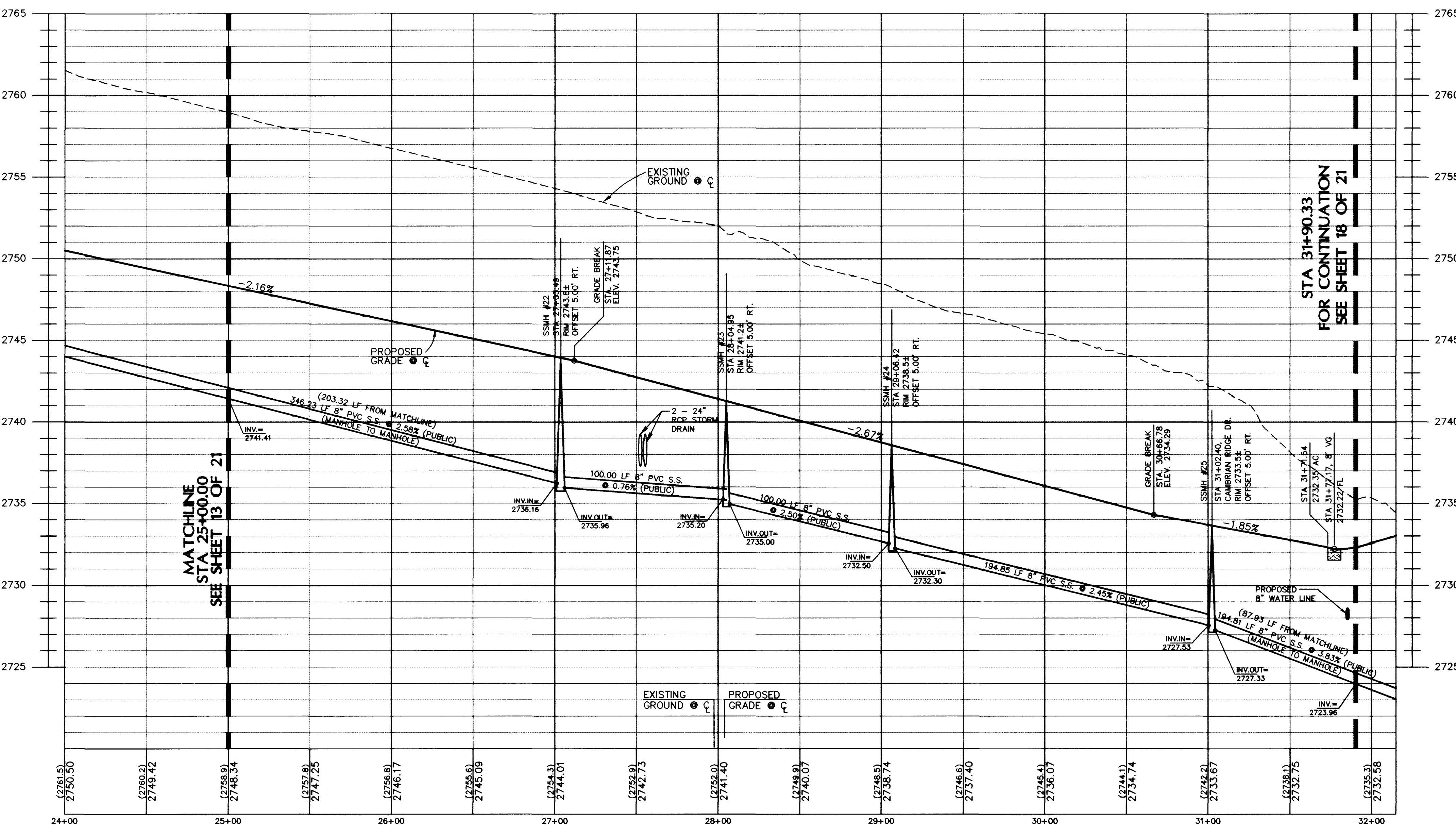
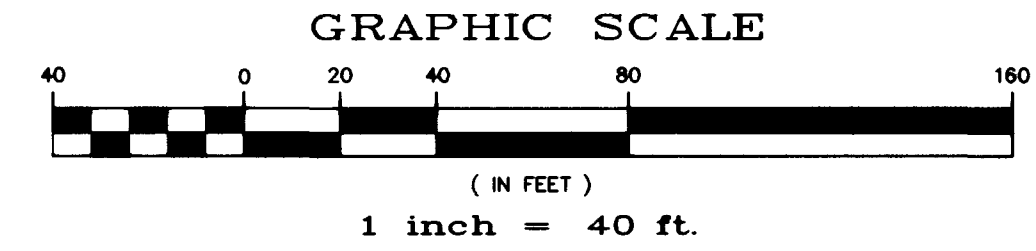
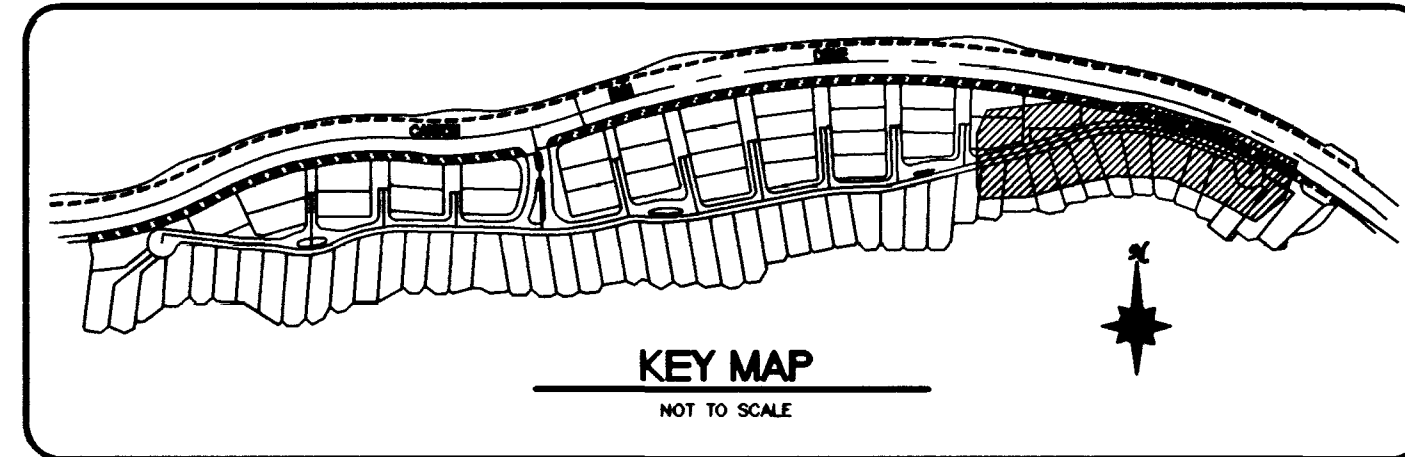


BACK OF CURB & CENTERLINE CURVE DATA TABLE

No.	RADIUS	DELTA	LENGTH	TANGENT
C1	40.50'	241°08'59"	170.46'	---
C2	50.00'	64°17'01"	56.10'	31.42'
C3	1500.00'	06°22'46"	167.01'	83.59'
C4	1516.00'	04°12'35"	111.38'	55.72'
C5	1532.00'	09°30'47"	254.37'	127.48'
C6	400.00'	36°49'09"	257.05'	133.14'
C7	416.00'	13°17'35"	96.52'	48.48'
C8	432.00'	36°49'09"	277.61'	143.79'
C9	1500.00'	05°39'34"	148.17'	74.14'
C10	1484.00'	05°39'34"	146.59'	73.35'
C11	1468.00'	05°39'34"	145.01'	72.56'

CAMBRIAN RIDGE DRIVE - PLAN VIEW (PRIVATE)
HORIZONTAL SCALE: 1" = 40'

NOTE:
SANITARY SEWER MANHOLES PER U.S. PLATE NO. S8-1



CAMBRIAN RIDGE DRIVE - PROFILE (PRIVATE)
HORIZONTAL SCALE: 1" = 40'
VERTICAL SCALE: 1" = 4'

CONSTRUCTION NOTES

1. CONSTRUCT 8" CONCRETE VALLEY GUTTER PER SUMMERLIN STANDARD DWG. NO. S-64.
2. CONSTRUCT SIDEWALK RAMP (CASE 1) PER SUMMERLIN STANDARD DWG. NO. S-77. (TRANSITION LENGTHS A & B SHOWN ON PLAN)
3. CONSTRUCT CONCRETE SIDEWALK PER SUMMERLIN STANDARD DWG. NO. S-72.
4. CONSTRUCT "L" TYPE CURB & GUTTER OR "A" TYPE CURB PER SUMMERLIN STANDARD DWG. NO. S-50.
5. CONSTRUCT 30" ROLL TYPE CURB AND GUTTER PER SUMMERLIN STANDARD DWG. NO. S-48.

GENERAL NOTES

1. ALL STATIONING IS CENTERLINE STATIONING UNLESS OTHERWISE NOTED.
2. SEWER LENGTHS ARE FROM CENTER OF MANHOLE TO CENTER OF MANHOLE.
3. "K" STA. INDICATES KNUCKLE STATIONING AT BACK OF CURB.
4. "C" STA. INDICATES CUL-DE-SAC STATIONING AT BACK OF CURB.
5. ALL ONSITE STREETS ARE TO BE PRIVATE WITH PUBLIC UTILITY EASEMENTS. PRIVATE STREETS TO BE MAINTAINED BY HOA.
6. ADD 2700 TO PLAN ELEVATIONS.

BENCHMARK
CITY OF LAS VEGAS BENCHMARK
OLV0030566 RIVET & PLATE, NEVADA POWER VAULT #JU-795,
9201 SUMMERLIN PARKWAY
2714.586 NAVD 1929 DATUM. (ADD 2.46 FT. TO ELEVATIONS
SHOWN HEREON TO CORRESPOND TO 1988 DATUM - 2717.03 FEET,
828.1527 METER).

BASIS OF BEARING
NORTH 88°50'11" WEST BEING THE BEARING OF THE SOUTH LINE OF
SECTION 30, TOWNSHIP 20 SOUTH, RANGE 60 EAST, M.D.M., AS SHOWN
BY MAP THEREOF ON FILE IN FILE 82, PAGE 64 OF PARCEL MAPS IN
THE CLARK COUNTY RECORDER'S OFFICE, CLARK COUNTY, NEVADA.

WESTMARK HOMES

PBS&J
ENGINEERING • PLANNING • SURVEYING • CONSTRUCTION SERVICES

**CAMBRIAN RIDGE DRIVE
STA 25+00 TO STA 32+14.83
PLAN AND PROFILE**

**SUMMERLIN VILLAGE 3
PARCEL "C"
CANYON TERRACE**

SHEET: JAN. 1999

DESIGNED BY: MJP

CHECKED BY: LUP

PROJECT NO.: 51741

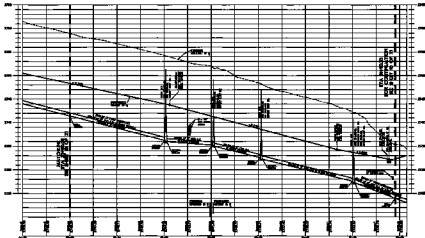
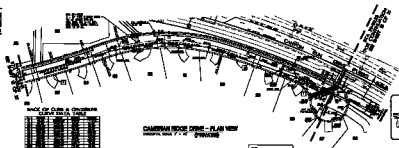
SCALE: 1" = 40'

SEAL
ROBERT F. EYNCK
CIVIL

14 OF 21 SHEETS
DRAWING NO. 107Y-4603

D:\Draws\1741\1741-14.dwg Thu Feb 25 09:49:09 1999 PBSSJ - JED JMSJAY

1/4" = 100' HORIZONTAL
 1/4" = 10' VERTICAL
 1/4" = 10' HORIZONTAL
 1/4" = 10' VERTICAL



CONSTRUCTION NOTES

- 1. SEE SHEET 10-1 FOR
- 2. SEE SHEET 10-1 FOR
- 3. SEE SHEET 10-1 FOR
- 4. SEE SHEET 10-1 FOR
- 5. SEE SHEET 10-1 FOR

GENERAL NOTES

- 1. SEE SHEET 10-1 FOR
- 2. SEE SHEET 10-1 FOR
- 3. SEE SHEET 10-1 FOR
- 4. SEE SHEET 10-1 FOR
- 5. SEE SHEET 10-1 FOR

REVISIONS
 NO. DATE BY
 1 10/10/10 JLM
 2 10/10/10 JLM

APPROVED
 PROJECT ENGINEER
 JLM

WESTMARK HOMES

CAMERON RIDGE DRIVE
 FROM 100' TO 1500' STATION
 PLAN AND PROFILE

SHEET NO. 10-1 OF 10 SHEETS
 DATE: 10/10/10

SCALE: 1/4" = 100' HORIZONTAL
 1/4" = 10' VERTICAL

