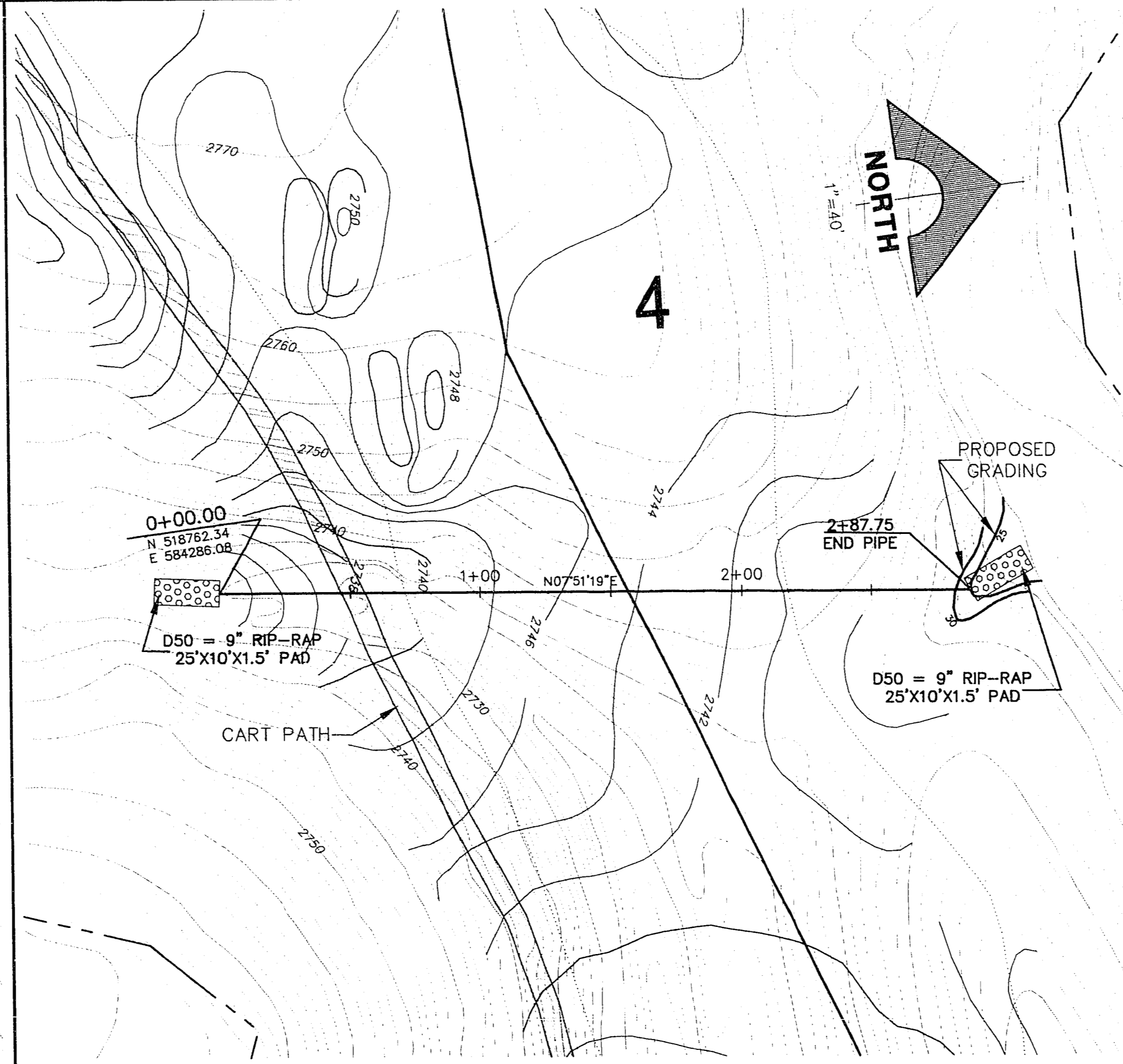


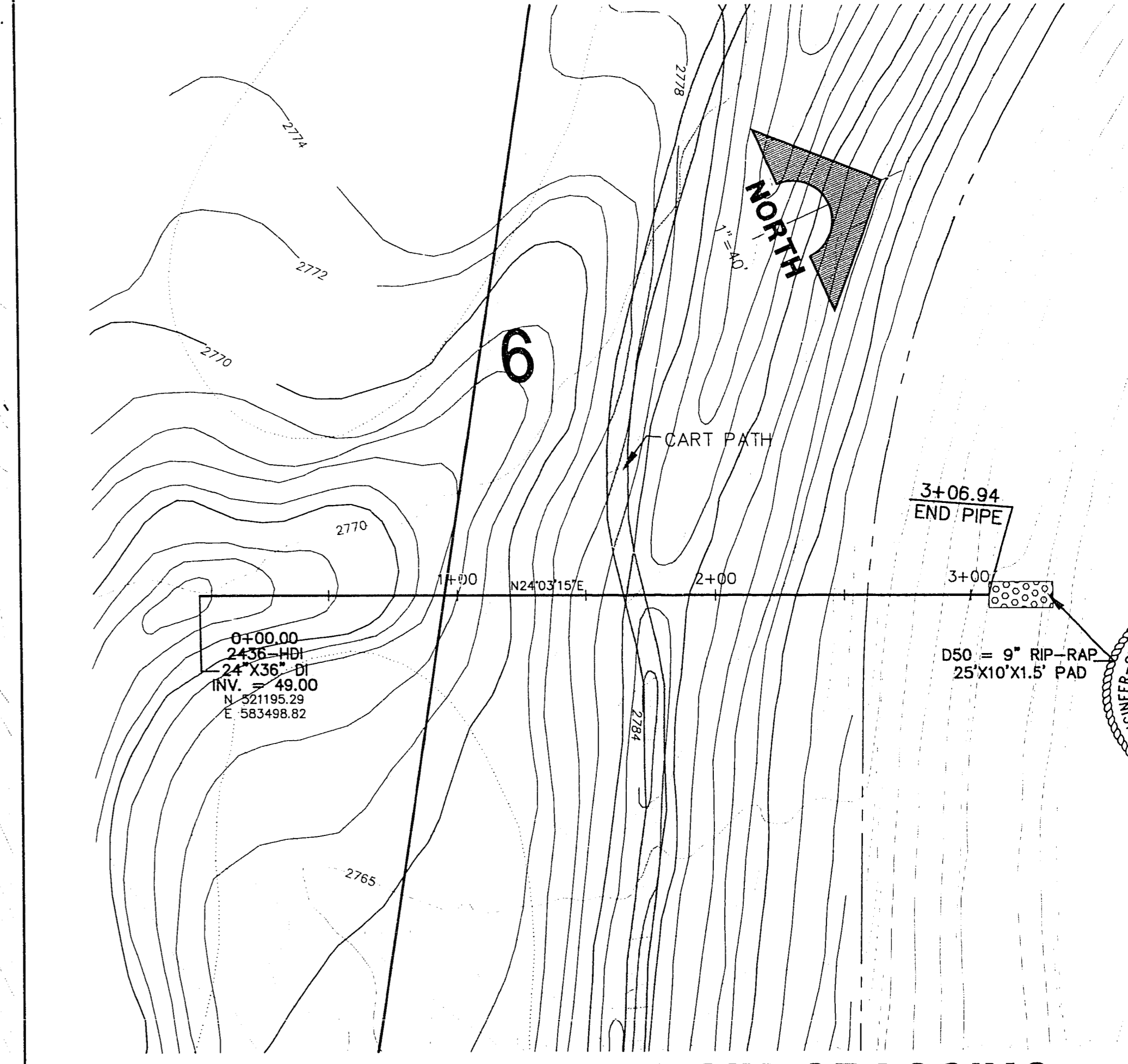
**GOLF COURSE STORM DRAIN CROSSING** 1

PRIVATE STORM DRAIN SYSTEM TO BE PRIVATELY OWNED AND MAINTAINED. SCALE: HORIZ. 1" = 40' VERT. 1" = 4' PRIVATE SYSTEM 36



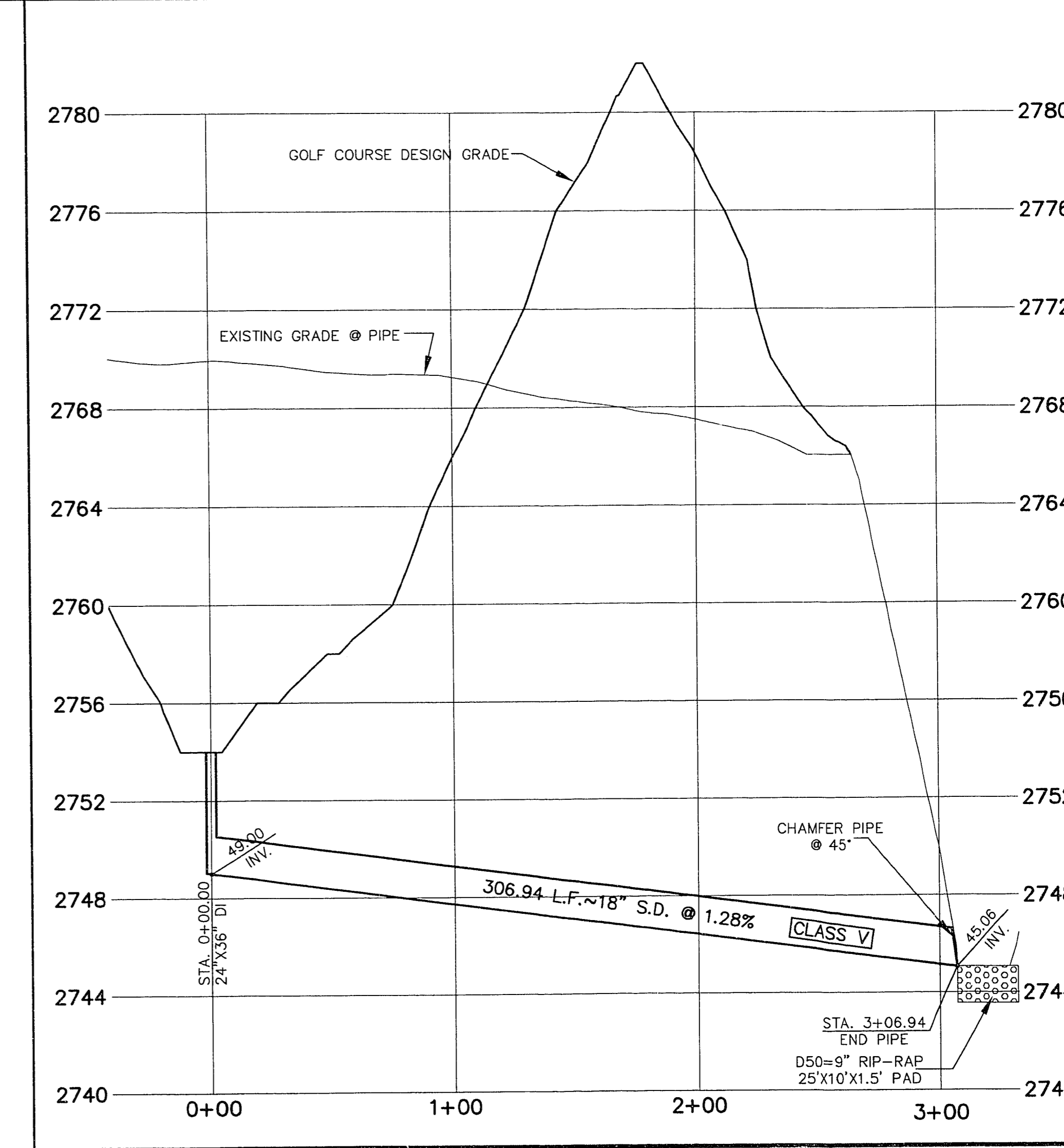
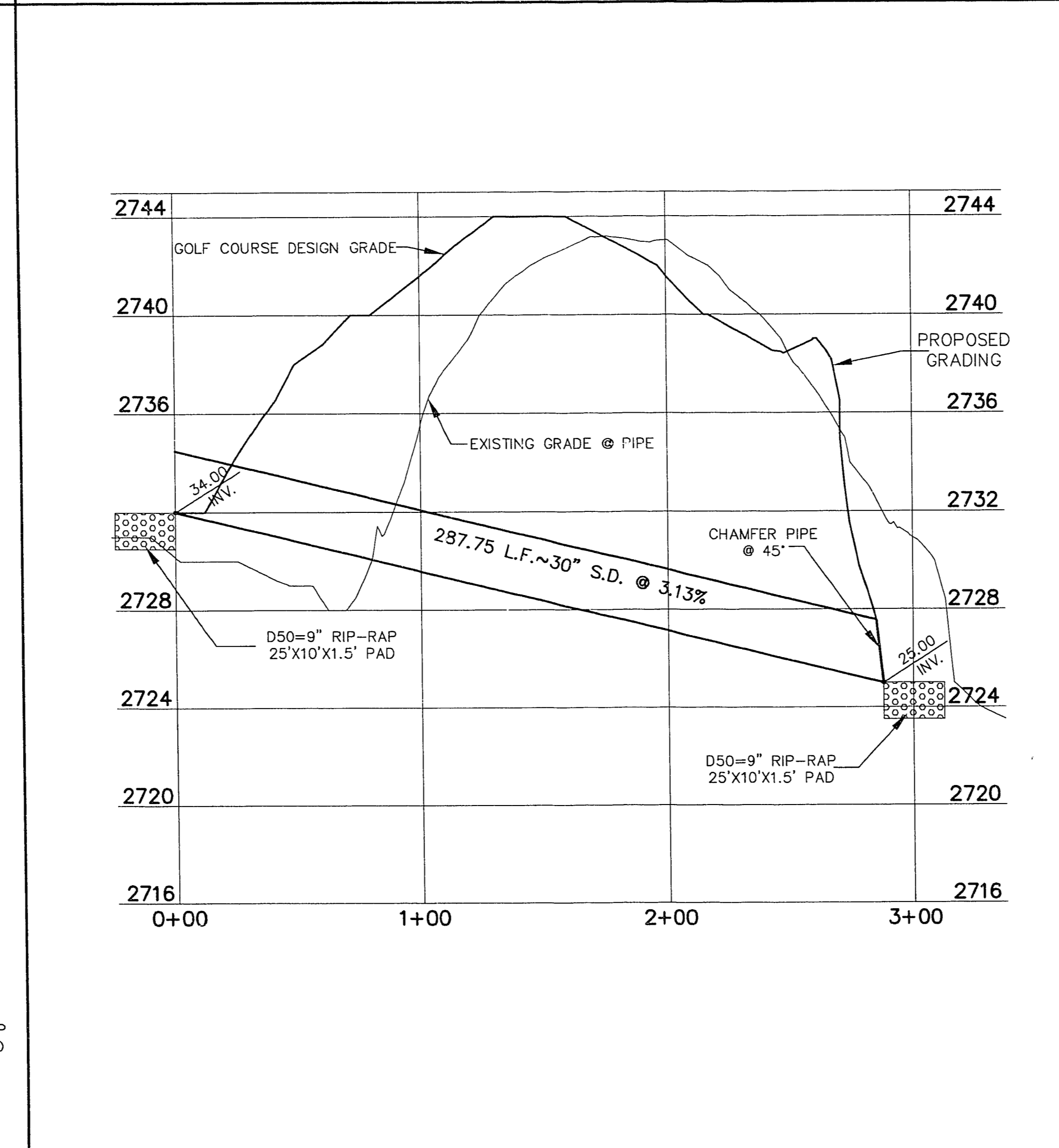
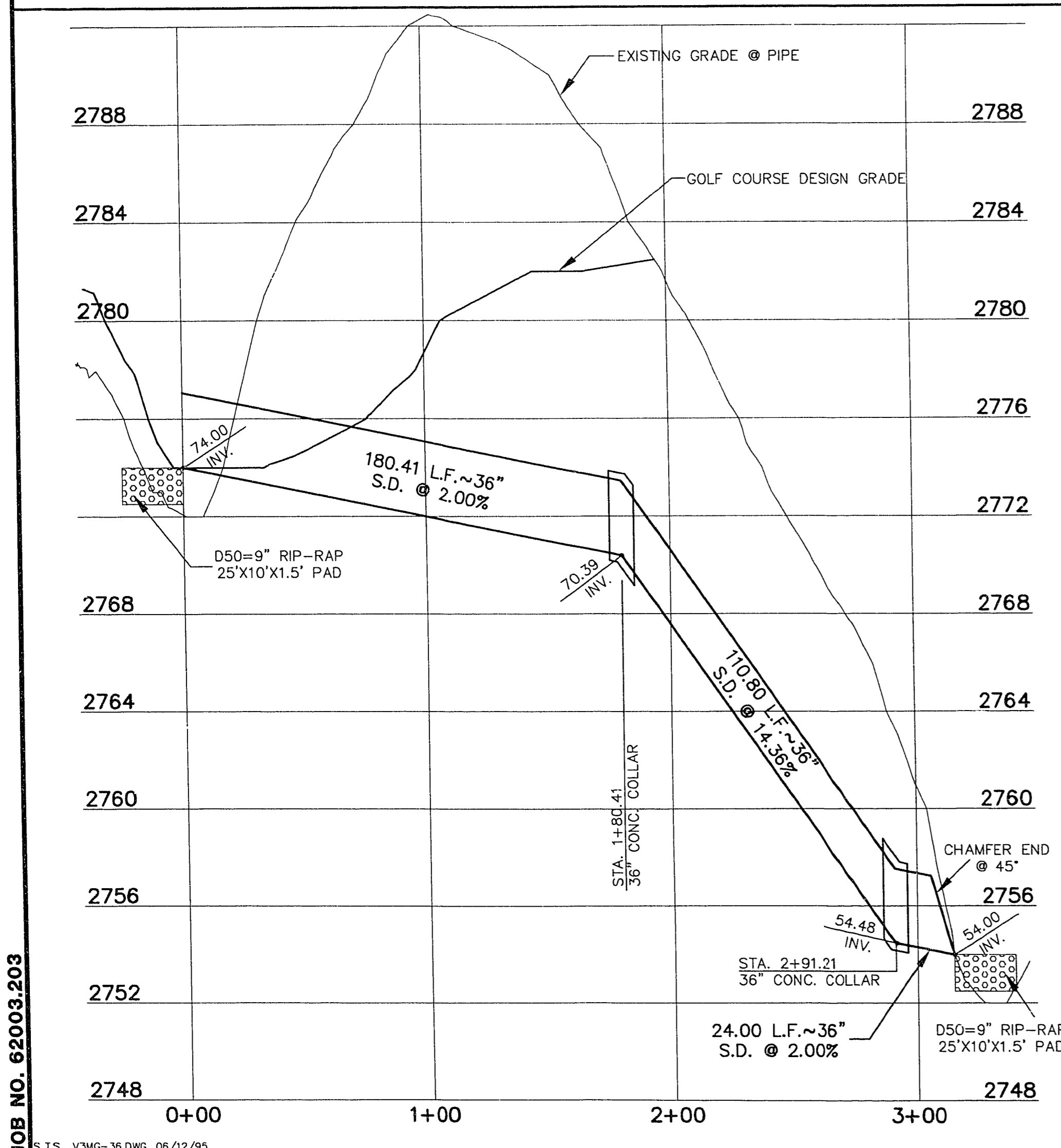
**GOLF COURSE STORM DRAIN CROSSING** 2

PRIVATE STORM DRAIN SYSTEM TO BE PRIVATELY OWNED AND MAINTAINED. SCALE: HORIZ. 1" = 40' VERT. 1" = 4' PRIVATE SYSTEM 36



**GOLF COURSE STORM DRAIN CROSSING** 3

PRIVATE STORM DRAIN SYSTEM TO BE PRIVATELY OWNED AND MAINTAINED. SCALE: HORIZ. 1" = 40' VERT. 1" = 4' PRIVATE SYSTEM 36



RECOMMENDED BY: *[Signature]* DATE: *[Date]*

APPROVED BY: *[Signature]* DATE: *[Date]*

REVISIONS:

NO.	DATE	DESCRIPTION

REGISTERED PROFESSIONAL ENGINEER - STATE OF NEVADA  
 NO. 10233  
 BERT A. WALLACE  
 CIVIL ENGINEER

1555 SOUTH RAINBOW BLVD./LAS VEGAS, NEVADA 89102  
**G. C. WALLACE, INC.**  
 Engineering/Architecture

**SUMMERLIN**  
**VILLAGE 3 ROUGH GRADING**  
**UTILITY SERVICE EXTENSION**  
**PROFILE**

SHEET **36**  
 SHT 36 OF 47

JOB NO. 62003.203

S.T.S. V3MG-36.DWG, 06/12/95

24-2-15b

107-V2355