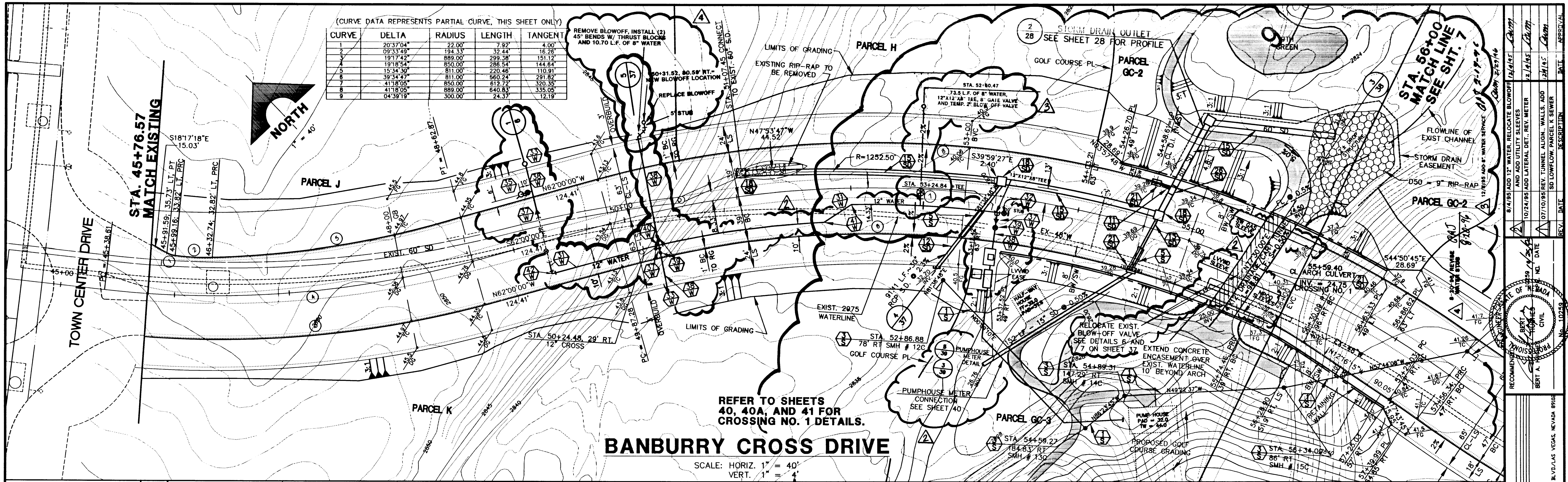


(CURVE DATA REPRESENTS PARTIAL CURVE, THIS SHEET ONLY)

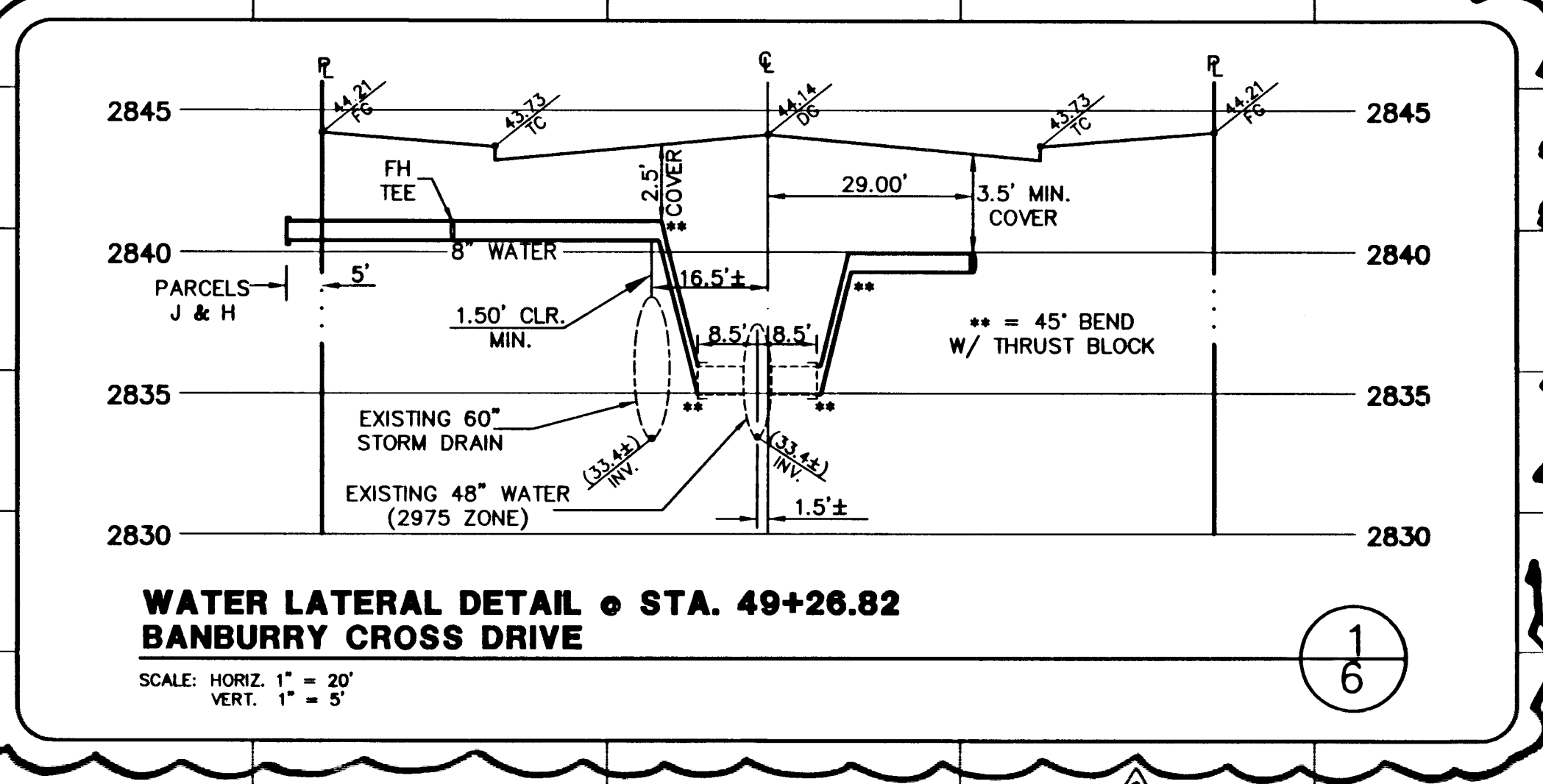
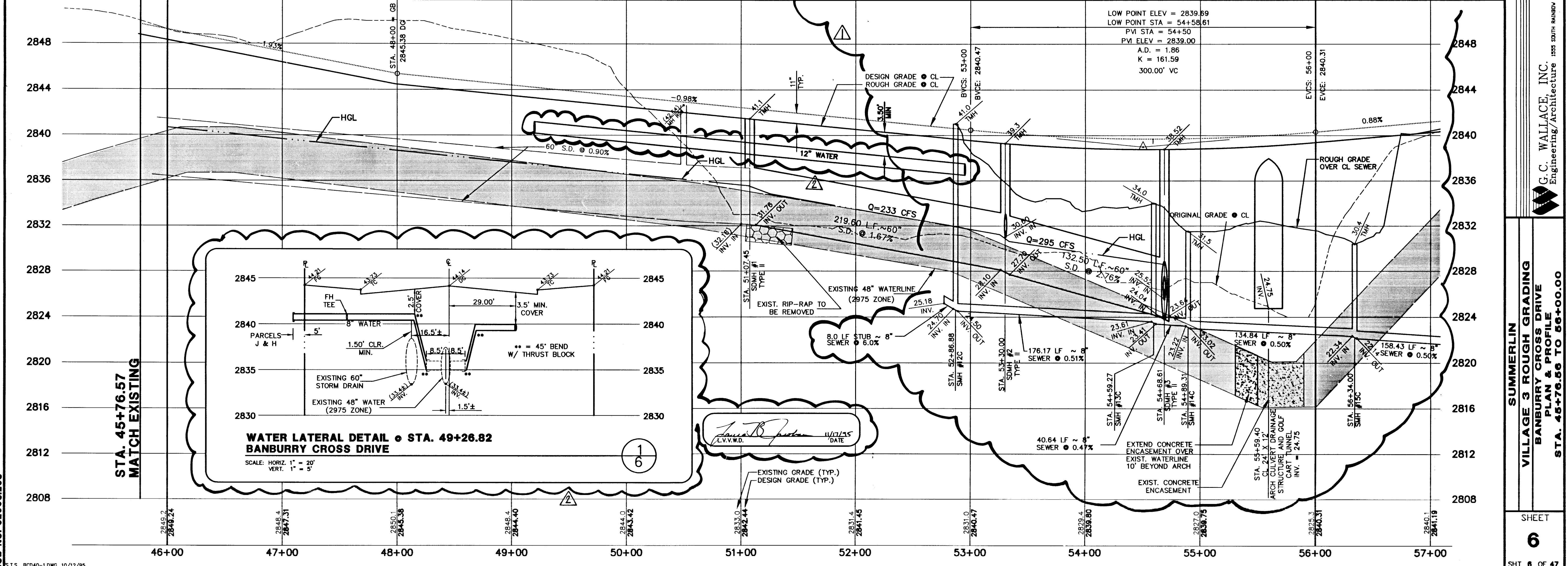
CURVE	DELTA	RADIUS	LENGTH	TANGENT
1	20°37'04"	22.00	7.92	4.00
2	09°33'49"	194.33	32.44	16.26
3	19°17'42"	889.00	299.38	151.12
4	19°15'57"	850.00	286.24	144.84
5	15°34'57"	811.00	220.46	110.91
6	39°34'47"	811.00	560.24	291.82
7	41°18'05"	850.00	612.72	320.56
8	41°19'05"	889.00	640.83	335.05
9	04°39'19"	300.00	24.37	12.19



REFER TO SHEETS 40, 40A, AND 41 FOR CROSSING NO. 1 DETAILS.

BANBURY CROSS DRIVE

SCALE: HORIZ. 1" = 40'
VERT. 1" = 4'



JOB NO. 62003.203

RECOMMENDATIONS:
 9/14/95 ADD 12" WATER, RELOCATE BLOWOFF TO EXIST. 60" S.D. TO EXIST. 60" S.D. WATER SERVICE
 AND ADD UTILITY SLEEVES
 10/24/95 ADD LATERAL DET. REV. METER
 07/10/95 REV. TUNNEL ALIGN. WALLS, ADD SD LOWFLOW, PARCEL K SEWER

DATE: 12/14/95
 DATE: 12/14/95
 DATE: 12/14/95

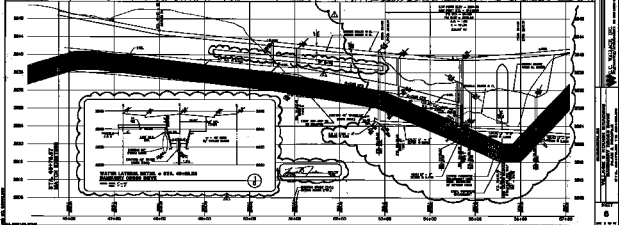
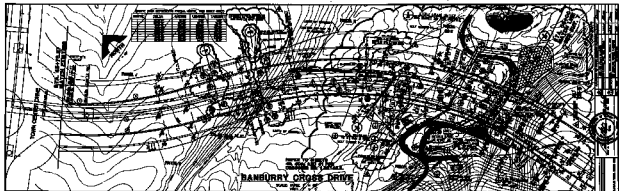
APPROVAL:
 CIVIL
 10258

1535 SOUTH RAINBOW BLVD., LAS VEGAS, NEVADA 89108

G.C. WALLACE, INC.
 Engineering/Architecture

SUMMERLIN
VILLAGE 3 ROUGH GRADING
BANBURY CROSS DRIVE
PLAN & PROFILE
STA. 45+76.56 TO 56+00.00

SHEET
6
 SHT 6 OF 47



107-V2355
 U.S. GEOLOGICAL SURVEY
 WATER RESOURCES DIVISION
 REGIONAL OFFICE
 SAN FRANCISCO, CALIF.