

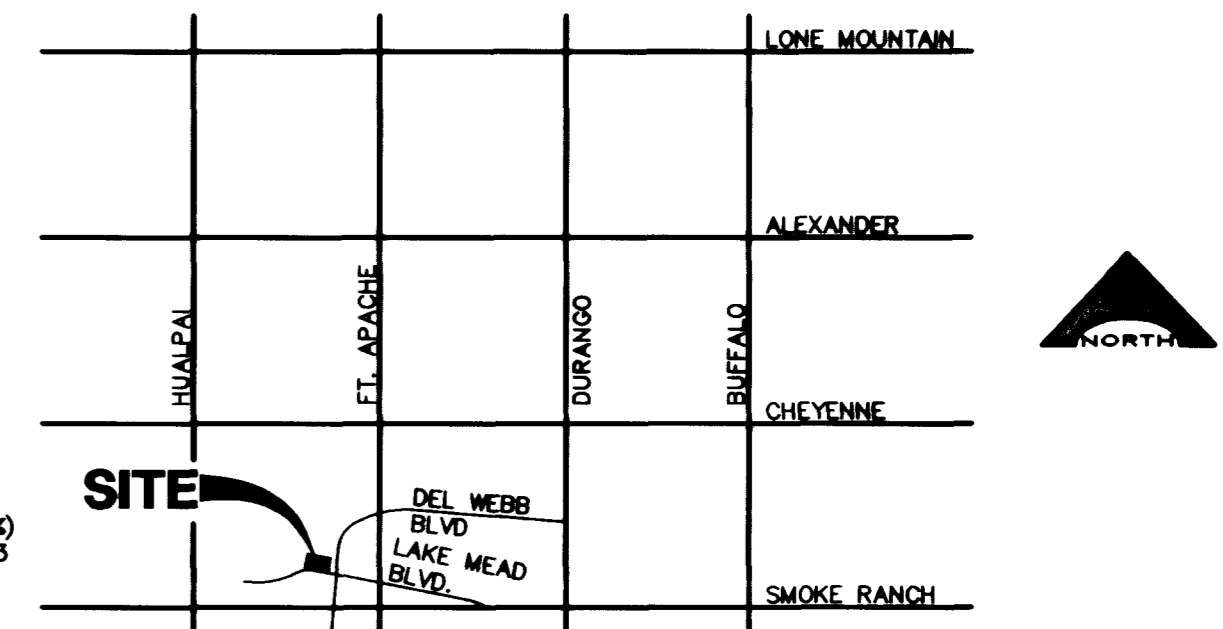
2-4-99

DESIGNED BY:	CHD BY:
DRAWN BY:	DATE:
REVISION:	DATE:
NO.	

L. R. NELSON CONSULTING ENGINEERS, INC.
 3035 East Patrick Lane Suite 9
 Las Vegas, Nevada 89120
 (702) 798-7978
 (702) 451-2296 FAX

GRADING PLAN II
SUMMERGATE CENTER AT SUMMERLIN
 PLAZA PROPERTIES
 LAS VEGAS, NEVADA

SHEET NUMBER
3
 OF 7 SHEETS
 161-014-963



VICINITY MAP
 SECTION 18, TOWNSHIP 20 SOUTH, RANGE 60 EAST, M.D.M. NO SCALE

BENCHMARK
 ELEVATION = 2620.759 FEET, 796.98702 METERS (NAVD 88)
 0LV00 185E6

BASIS OF BEARING
 NORTH 83°00'00" WEST BEING THE BEARING OF THE CENTERLINE OF LAKE MEAD BOULEVARD AS SHOWN BY A MAP THEREOF ON FILE IN FILE 59, PAGE 26 OF PARCEL MAPS IN THE CLARK COUNTY, NEVADA RECORDERS OFFICE.

LEGAL DESCRIPTION
 LOT 48 AS SHOWN ON A MAP THEREOF ON FILE IN FILE 59, PAGE 26 OF PARCEL MAPS IN THE CLARK COUNTY, NEVADA RECORDERS OFFICE LYING WITHIN SECTION 18, TOWNSHIP 20 SOUTH, RANGE 60 EAST, M.D.M., CITY OF LAS VEGAS, CLARK COUNTY, NEVADA.

ABBREVIATIONS

TF	TOP OF FOOTING	23.00	DESIGN ELEVATION
TP	TOP OF PILASTER	(23.00)	EXISTING ELEVATION
AC	ASPHALT CONCRETE	TC	CENTERLINE
TC	TOP OF CURB	FL	FINISH GRADE
FG	FINISH GRADE	EP	EDGE OF PAVEMENT
FL	FLOW LINE	GB	GRADE BREAK
EP	EDGE OF PAVEMENT	HP	HIGH POINT
GB	GRADE BREAK	BVC	BEGIN VERTICAL CURVE
HP	HIGH POINT	EVC	END VERTICAL CURVE
BVC	BEGIN VERTICAL CURVE	MVC	MIDDLE VERTICAL CURVE
EVC	END VERTICAL CURVE	RVC	POINT OF REVERSE VERTICAL CURVE
MVC	MIDDLE VERTICAL CURVE	SW	SIDEWALK
RVC	POINT OF REVERSE VERTICAL CURVE	BFE	BASE FLOOD ELEVATION
SW	SIDEWALK	DI	DROP INLET
BFE	BASE FLOOD ELEVATION	TCW	TOP OF CHANNEL WALL
DI	DROP INLET	TW	TOP OF WALL
TCW	TOP OF CHANNEL WALL	HGL	HYDRAULIC GRADE LINE
TW	TOP OF WALL	EGL	ENERGY GRADE LINE
HGL	HYDRAULIC GRADE LINE	VA	VAN ACCESSIBLE
EGL	ENERGY GRADE LINE	FC	FACE OF CURB
VA	VAN ACCESSIBLE	R/W	RIGHT-OF-WAY
FC	FACE OF CURB	FF	FINISH FLOOR
R/W	RIGHT-OF-WAY	LP	LOW POINT
FF	FINISH FLOOR		
LP	LOW POINT		

DRAINAGE STUDY NOTE

NOTE: SIDEWALKS AND SIDEWALK GRADES AS SHOWN MEET A.D.A. STANDARDS. IF THEY ARE NOT INSTALLED AS SHOWN, THE NEW LOCATIONS AND GRADES SHOULD BE GIVEN TO THE ENGINEER SO THAT THEY CAN BE CHECKED TO ENSURE THEY MEET A.D.A. STANDARDS.

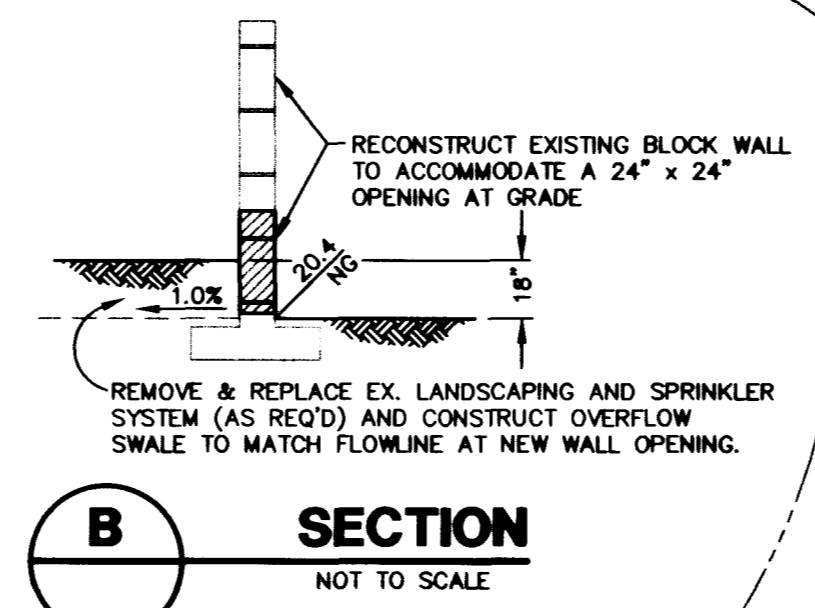
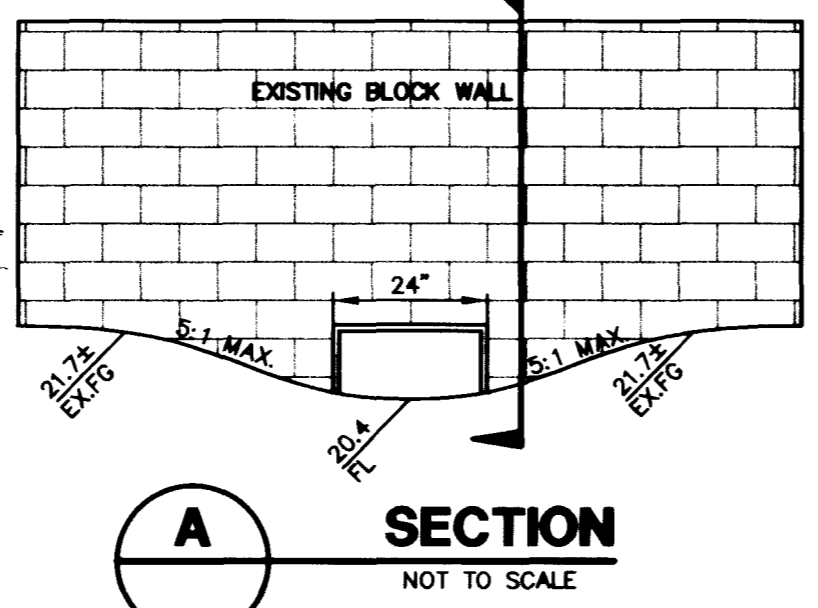
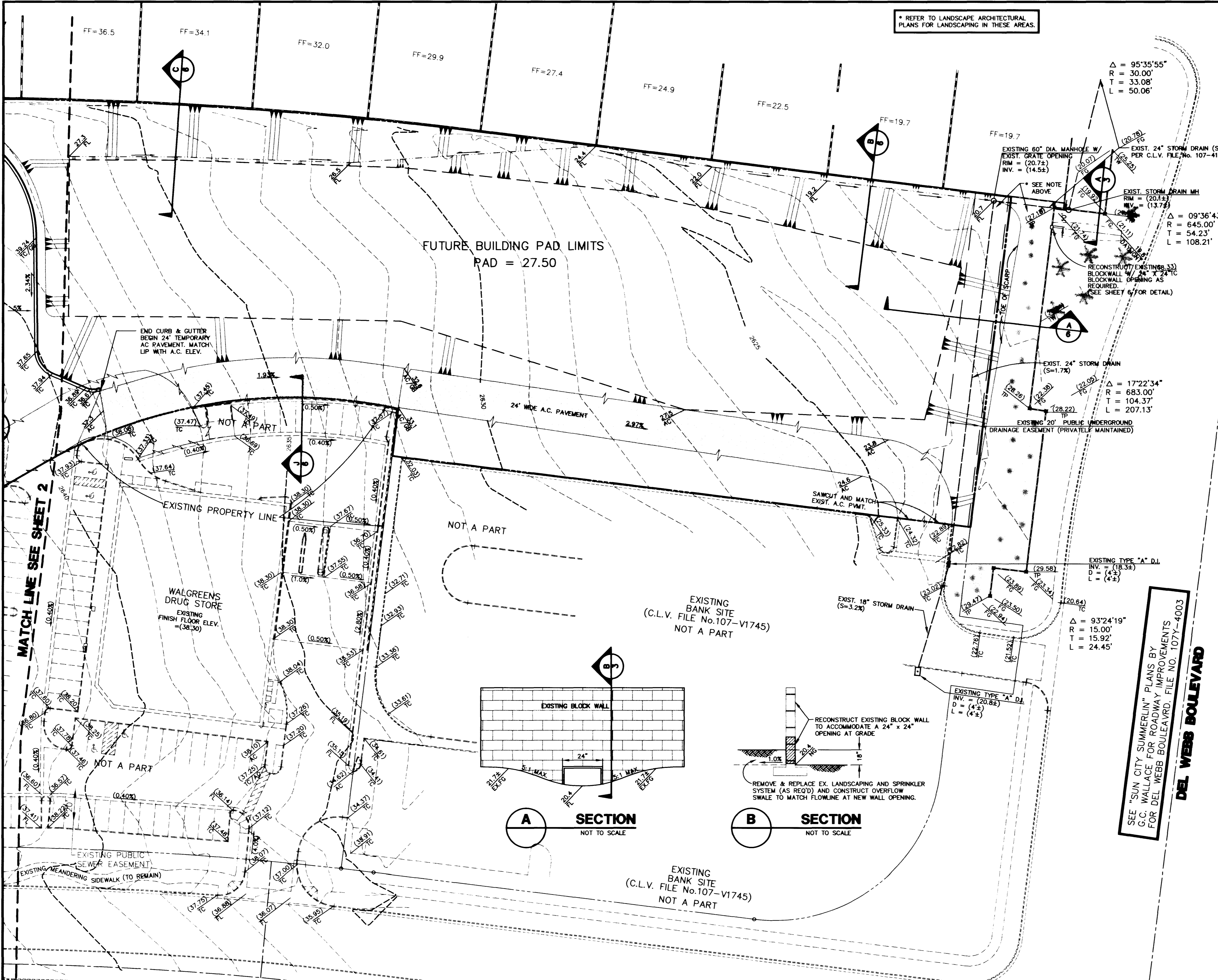
NOTE: ALL WORK PERFORMED WITHIN THE PUBLIC RIGHT-OF-WAY AND OUTSIDE THE PROJECT BOUNDARY SHALL BE PERFORMED UNDER A SEPARATE ENCROACHMENT PERMIT ISSUED BY THE CONTROLLING AUTHORITY.

NOTE: ALL WORK PERFORMED OUTSIDE THE PROJECT BOUNDARY AND ON PRIVATE PROPERTY SHALL NOT BE PERFORMED UNTIL WRITTEN PERMISSION AND EASEMENT HAS BEEN OBTAINED FROM THE PROPERTY OWNER.

ENGINEER'S CERTIFICATE
 I CERTIFY THAT THIS GRADING PLAN IS IN CONFORMANCE WITH THE APPROVED DRAINAGE STUDY ON FILE AT THE CITY OF LAS VEGAS
 Gregory C. Radrig, P.E. #1474
 2-18-99 DATE

CONSTRUCTION NOTES

- CONSTRUCT 24" "L" TYPE CURB AND GUTTER. SEE DETAIL SHEET 6 - PER STD. DWG. NO. 216
- CONSTRUCT "A" TYPE CURB - PER STD. DWG. NO. 219. SEE DETAIL SHEET 6
- CONSTRUCT 3" WIDE CONCRETE VALLEY GUTTER. SEE DETAIL SHEET 6 - PER STD. DWG. NO. 228
- CONSTRUCT 8" WIDE CONCRETE VALLEY GUTTER PER STD. DWG. NO. 228, SEE DETAIL SHEET 6
- CONSTRUCT INTEGRAL SIDEWALK (WIDTH VARIES AS INDICATED) SEE DETAIL SHEET 3
- CONSTRUCT 2.5" WIDE CONCRETE FLUME (1.5' OPENING), SEE DETAIL SHEET 6
- CONSTRUCT UNDER SIDEWALK DRAIN PER STD. DWG. NO. 236, SEE DETAIL SHEET 6
- CONSTRUCT RETAINING WALL (HEIGHT AS INDICATED) WITH PERIMETER BLOCK WALL. SEE DETAIL SHEET 6
- CONSTRUCT SIDEWALK RAMP PER STD. DWG. NO. 235.
- CONSTRUCT 2" A.C. PAVEMENT OVER 4" TYPE II GRAVEL BASE (PARKING AREA) SEE DETAIL SHEET 6
- CONSTRUCT 3" A.C. PAVEMENT OVER 4" TYPE II GRAVEL BASE (DRIVEWAY AREA) SEE DETAIL SHEET 6
- SAWCUT REMOVE & MATCH EXISTING A.C. PAVEMENT AS INDICATED-PER STD. DWG. NO. 406
- CONSTRUCT 4" THICK CONCRETE SIDEWALK (SEE PLAN FOR WIDTH) PER STD. DWG. NO. 235, SEE DETAIL SHEET 6
- INSTALL 4" DIAMETER DRAIN PIPE, PER DETAIL SHEET 6
- CONSTRUCT SIDEWALK RAMP PER DETAIL SHEET 6
- SAWCUT, REMOVE, AND MATCH EXISTING A.C. PAVEMENT.
- CONSTRUCT 4" WIDE A.D.A. ACCESS RAMP(8.33% SLOPE MAX.) WITH HANDRAIL. 107Y-4579



DISCLAIMER NOTE

UTILITY LOCATIONS SHOWN HEREON ARE APPROXIMATE ONLY. IT SHALL BE THE CONTRACTOR'S RESPONSIBILITY TO DETERMINE THE EXACT HORIZONTAL AND VERTICAL LOCATION OF ALL EXISTING UNDERGROUND AND OVERHEAD UTILITIES PRIOR TO COMMENCING CONSTRUCTION. NO REPRESENTATION IS MADE THAT ALL EXISTING UTILITIES ARE SHOWN HEREON. THE ENGINEER ASSUMES NO RESPONSIBILITY FOR UTILITIES NOT SHOWN OR UTILITIES NOT SHOWN IN THEIR PROPER LOCATION.

Call you before you Dig
 1-800-227-2600
 (Nevada Service Only)

Call you before you Overhead
 1-702-593-6111
 (Nevada Service Only)

SEE "WALGREENS LAKE MEAD & DEL WEBB" STREET PLAN AND PROFILE FOR LAKE MEAD AND DESIGN OF LAKE MEAD BOULEVARD AND ENTRANCE DETAIL, FILE NO. 107-V2680.

NOTE: ALL STORM DRAIN FACILITIES ARE PUBLIC AND ARE PRIVATELY MAINTAINED.

