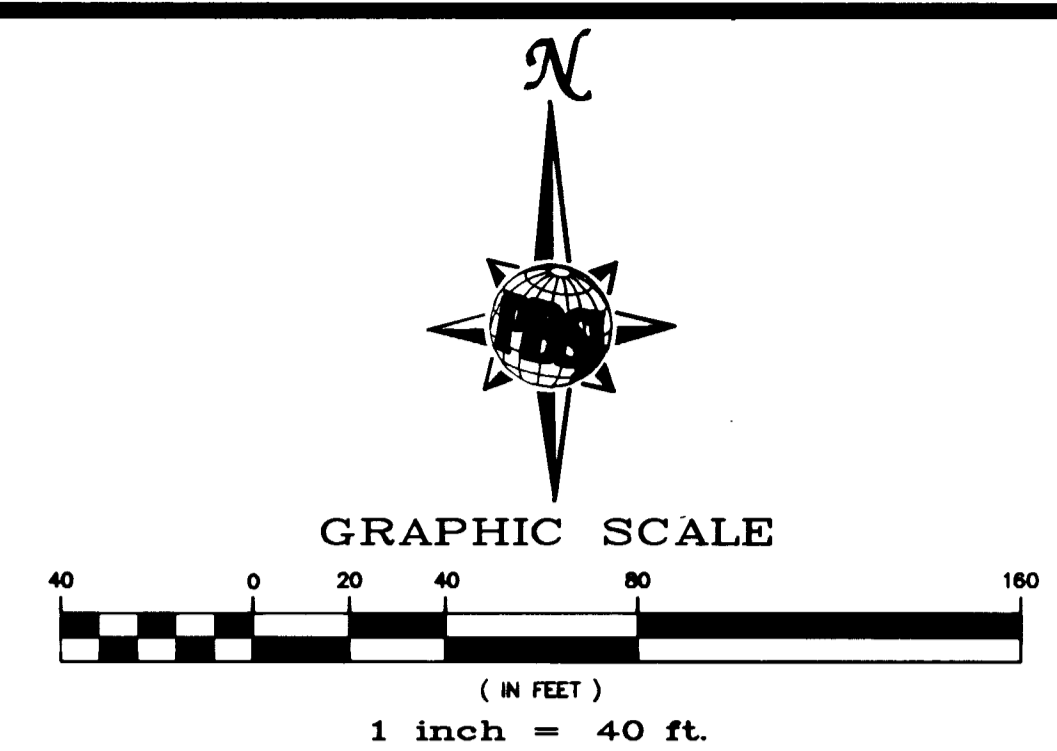


ELKHORN ROAD - PLAN (PUBLIC)
HORIZONTAL SCALE: 1" = 40'



LEGEND:

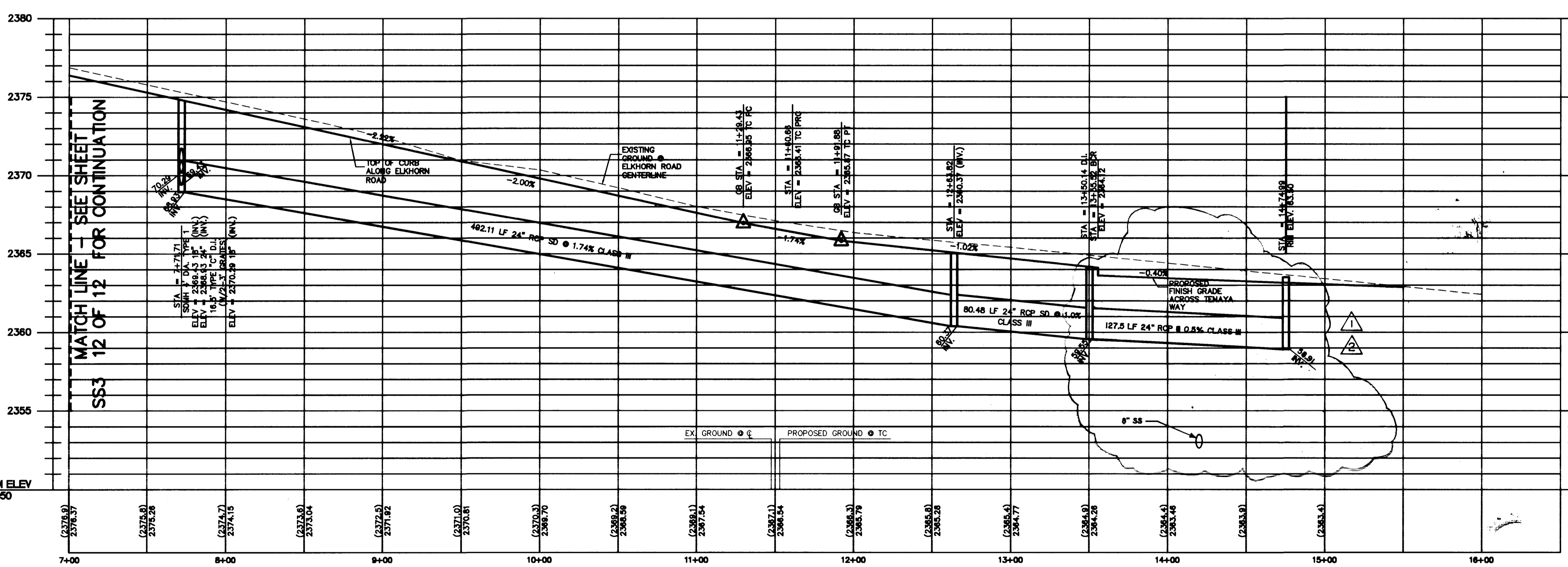
100.00	DESIGN ELEVATION	---	WL	WATERLINE (EXISTING)
(100.00)	EXISTING ELEVATION	---	WL	WATERLINE (PROPOSED)
FL	FLOWLINE	---	SS	SEWERLINE (EXISTING)
TC	TOP OF CURB	---	SS	SEWERLINE (PROPOSED)
FG	FINISH GRADE	---	---	MATCH LINE
GB	GRADE BREAK	---	---	WATER VALVE
EG	EXIST. GROUND	---	---	SEWER MANHOLE (48")
---	FLOW LINE	---	---	NEW PAVEMENT
---	EXISTING FH ASSY	---	---	PAVEMENT REPLACED
---	RETAINING WALL	---	---	
---	BLOCK WALL	---	---	

CURVE TABLE

No.	RADIUS	DELTA	LENGTH	TANGENT
C1	20.00'	90°00'00"	31.42'	20.00'
C2	25.00'	90°11'04"	39.35'	25.00'
C3	30.00'	90°42'50"	47.50'	30.38'
C24	100.00'	18°11'42"	31.76'	18.01'
C25	100.00'	18°11'42"	31.76'	18.01'

PROJECT BENCHMARK
CITY LAS VEGAS BENCHMARK #48
ST. 1LV9022W6, RIVET & PLATE ON POWER - TRANS PAD
500' EAST OF BUFFALO DR. @ 7535 W. DEER SPRINGS RD.
ELEV. = 727.8646 M. (NAVD 88)
ELEV. = 2385.6000 FT.

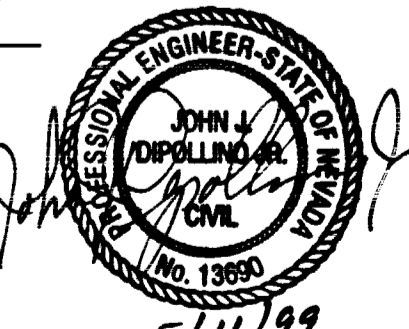
BASIS OF BEARING
SOUTH 88°32'51" EAST - BEING THE NORTH LINE OF THE NORTHWEST QUARTER (NW 1/4) OF SECTION 22, TOWNSHIP 19 SOUTH, RANGE 60 EAST, M.D.M., CLARK COUNTY, NEVADA AS SHOWN IN BOOK 74 OF PLATS, PAGE 53 OFFICIAL RECORDS, CLARK COUNTY, NEVADA



ELKHORN ROAD - PROFILE
HORIZONTAL SCALE: 1" = 40'
VERTICAL SCALE: 1" = 4'

- CONSTRUCTION NOTES**
- 200 AMP 240V PAD MOUNT SERVICE WITH
2 2 POLE 60 AMP C.B.
2 1 POLE 15 AMP C.B.
1 1 POLE 40 AMP C.B.
1 1 POLE 60 AMP C.B.
2 2 POLE 60 AMP CONTACTORS
1 BYPASS SWITCH PER CONTACTOR (W/PHOTOSWITCH)
 - INSTALL "L" FOUNDATION WITH XXX POLE, 400 WATT LUMINAIRE WITH 40 AMP SINGLE POLE BREAKER (TIE INTO #7 PULLBOX WITH 3" CONDUIT)
 - #7 INTERCONNECT PB, TIE TO #7 TRAFFIC SIGNAL PULLBOX W/ 1-3" CONDUIT
 - #7 PULLBOX (TRAFFIC SIGNAL)
 - DEVELOPER TO COORDINATE W/UTILITY FOR RELOCATION OF EXIST. POWER POLES IF IN SIDEWALK PROVIDE MIN. CLEARANCE OF 3.5'
 - 2" ST. LT. CONDUIT, STUB & CAP
 - 1-3" INTERCONNECT CONDUIT
 - STUB & CAP 2-3" 5' PAST CONSTRUCTION (TRAFFIC SIGNAL)
 - 2-3" TRAFFIC SIGNAL CONDUIT

- #5 ST. LT. PULLBOX CONNECT TO SERVICE POINT W/2-2" CONDUIT
- HANDICAP RAMP PER CCA STD. DWR. 235, CASE II "A-B" B-B
- 127.5 LF 24" CLASS III RCP @ 0.5%



Call before you Dig
1-800-227-2600
UNDERGROUND SERVICE ALERT (USA)

Call before you OVERHEAD
1-702-593-6111
NEVADA POWER ENVIRONMENT AND SAFETY SERVICES DEPARTMENT

NOTE
CONTRACTOR TO VERIFY LOCATION AND ELEVATION OF ALL EXISTING UNDERGROUND UTILITIES PRIOR TO CONSTRUCTION. NOTIFY THE ENGINEER OF ANY DISCREPANCIES.

DESERT OAK HOMES

ELKHORN ROAD PLAN & PROFILE

STAMPEDE ESTATES UNIT #1

DESERT OAK HOMES

DESIGNED BY: EMR
CHECKED BY: ER
PROJECT NO: 51558
SCALE: 1" = 40'
DRAWN BY: SAT
DATE: 07/09/98
DATE: 08/04/98
DATE: 08/10/98

5/11/99
5/11/99
5/11/99

13753
15706
16467

