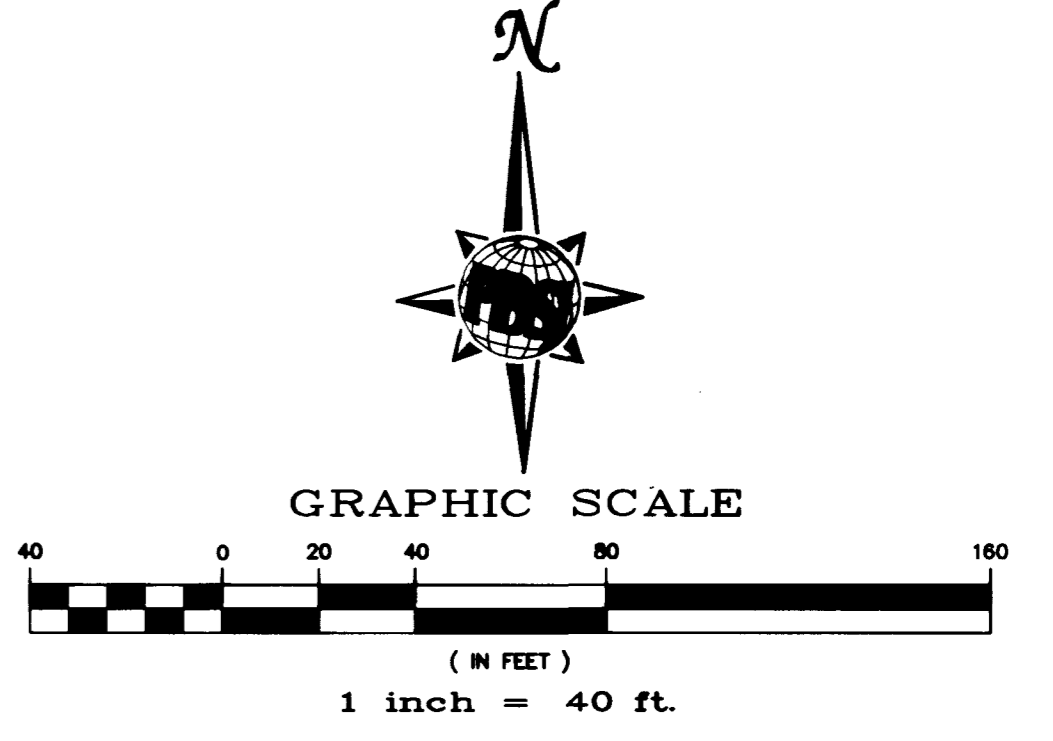


ELKHORN ROAD - PLAN (PUBLIC)
HORIZONTAL SCALE: 1" = 40'



LEGEND:

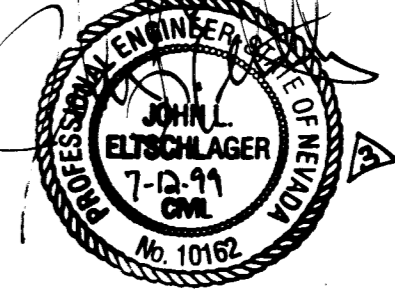
100.00	DESIGN ELEVATION	---	W---	WATERLINE (EXISTING)
(100.00)	EXISTING ELEVATION	---	WL---	WATERLINE (PROPOSED)
FL	FLOWLINE	---	SS---	SEWERLINE (EXISTING)
TC	TOP OF CURB	---	SS---	SEWERLINE (PROPOSED)
FG	FINISH GRADE	---	---	---
GB	GRADE BREAK	---	---	MATCH LINE
EG	EXIST. GROUND	---	---	WATER VALVE
FL	FLOW LINE	---	---	SEWER MANHOLE (48")
---	EXISTING FH ASSY	---	---	---
---	RETAINING WALL	---	---	NEW PAVEMENT
---	BLOCK WALL	---	---	PAVEMENT REPLACED

CURVE TABLE

No.	RADIUS	DELTA	LENGTH	TANGENT
C1	20.00'	90°00'00"	31.42'	20.00'
C2	25.00'	90°00'00"	39.27'	25.00'
C3	30.00'	90°00'00"	47.12'	30.00'
C4	100.00'	18°11'42"	31.78'	18.00'
C5	100.00'	18°11'42"	31.78'	18.00'

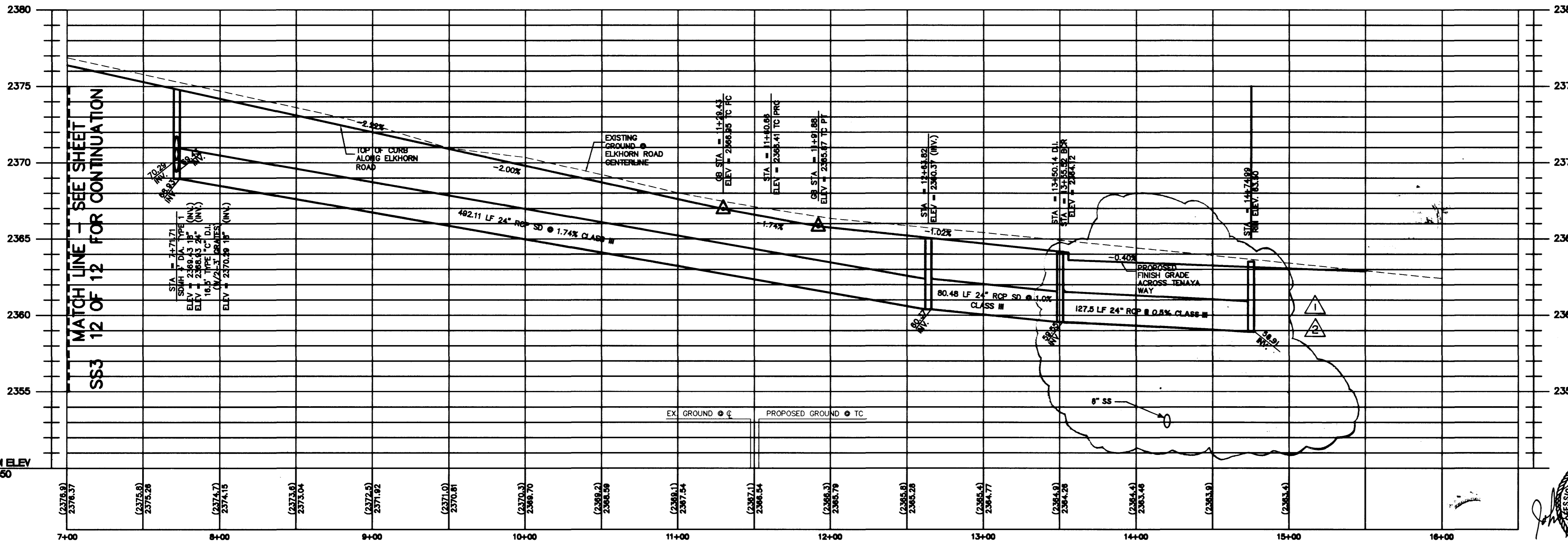
PROJECT BENCHMARK
CITY LAS VEGAS BENCHMARK #48
ST. 1LV9022W6, RIVET & PLATE ON POWER - TRANS PAD
500' EAST OF BUFFALO DR. @ 7535 W. DEER SPRINGS RD.
ELEV. = 727.8646 M. (NAVD 88)
ELEV. = 2385.6000 FT.

BASIS OF BEARING
SOUTH 88°32'51" EAST - BEING THE NORTH LINE OF THE NORTHWEST QUARTER (NW 1/4) OF SECTION 22, TOWNSHIP 19 SOUTH, RANGE 60 EAST, M.D.M., CLARK COUNTY, NEVADA AS SHOWN IN BOOK 74 OF PLATS, PAGE 53 OFFICIAL RECORDS, CLARK COUNTY, NEVADA



TRAFFIC LUMINAIRES ARE TO BE WIRED CONTINUOUSLY TO METER PEDESTAL USING 2-#10 STR. & 1-#8 GREEN T.H.W. WIRE 10' OF SLACK SHALL BE LEFT IN POLE. EACH LUMINAIRE SHALL BE FUSED INDIVIDUALLY WITH A 10 AMP FUSE IN BOTTOM OF METER PEDESTAL.

NOTICE TO CONTRACTOR
EXISTING UTILITIES SHOWN HEREON ARE APPROXIMATE ONLY. IT SHALL BE THE CONTRACTOR'S RESPONSIBILITY TO DETERMINE THE EXACT HORIZONTAL AND VERTICAL LOCATION OF ALL EXISTING UNDERGROUND UTILITIES PRIOR TO COMMENCING CONSTRUCTION. NO REPRESENTATION IS MADE THAT ALL EXISTING UTILITIES ARE SHOWN HEREON. THE ENGINEER ASSUMES NO RESPONSIBILITY FOR UTILITIES NOT SHOWN OR UTILITIES NOT SHOWN IN THEIR PROPER LOCATION.



ELKHORN ROAD - PROFILE
HORIZONTAL SCALE: 1" = 40'
VERTICAL SCALE: 1" = 4'

- CONSTRUCTION NOTES**
- 200 AMP 240V PAD MOUNT SERVICE WITH 2 POLE 60 AMP C.B. 1 POLE 15 AMP C.B. 1 POLE 40 AMP C.B. 1 POLE 60 AMP C.B. 2 POLE 60 AMP CONTACTORS 1 BYPASS SWITCH PER CONTACTOR (W/PHOTOSWITCH)
 - INSTALL "L" FOUNDATION WITH XXA POLE, 400 WATT LUMINAIRE WITH 40 AMP SINGLE POLE BREAKER (TIE INTO #7 PULLBOX WITH 3" CONDUIT)
 - #7 INTERCONNECT PB, TIE TO #7 TRAFFIC SIGNAL PULLBOX W/ 1-3" CONDUIT
 - #7 PULLBOX (TRAFFIC SIGNAL)
 - DEVELOPER TO COORDINATE W/UTILITY FOR RELOCATION OF EXIST. POWER POLES IF IN SIDEWALK PROVIDE MIN. CLEARANCE OF 3.5'
 - 2" ST. LT. CONDUIT, STUB & CAP
 - 1-3" INTERCONNECT CONDUIT
 - STUB & CAP 2-3" 5' PAST CONSTRUCTION (TRAFFIC SIGNAL)
 - 2-3" TRAFFIC SIGNAL CONDUIT

- #5 ST. LT. PULLBOX CONNECT TO SERVICE POINT W/2-2" CONDUIT
- HANDICAP RAMP PER CCA STD. DWG. 236, CASE # A-B D-F
- 127.5 LF 24" CLASS III RCP @ 0.5%

Call before you Dig
1-800-227-2600
UNDERGROUND SERVICE ALERT (USA)

Call before you OVERHEAD
1-702-593-6111
NEVADA POWER OVERHEAD AND SAFETY SERVICES DEPARTMENT

NOTE
CONTRACTOR TO VERIFY LOCATION AND ELEVATION OF ALL EXISTING UNDERGROUND UTILITIES PRIOR TO CONSTRUCTION. NOTIFY THE ENGINEER OF ANY DISCREPANCIES.

DESERT OAK HOMES

ELKHORN ROAD PLAN & PROFILE

STAMPEDE ESTATES UNIT #1 DESERT OAK HOMES

DRAWN BY: SAT 07/09/98

DESIGNED BY: EWR 06/04/98

CHECKED BY: ER 06/10/98

PROJECT NO: 51559

SCALE: 1" = 40'

SEAL

5/11/99

2/10/99

SHEET 52 OF 12 SHEETS

DRAWING NO. 1074-4581-1

13753 15706 16467 16871

